

Installing E-Smart W960 Thermostat

---

# Season's | Midea | Hotpoint

## PTAC or Heat Pump



## BEFORE YOU BEGIN

Search the Google Play store for the “VTech EC Tool” app or scan the QR code below to access the app and installation documents on the VTech site. Download and install the app (.apk file) on your Android smartphone or tablet.



Open the EC Tool app, tap menu > profiles, then follow the prompts for creating a customized profile for your PTAC or Heat Pump. This profile will be used later to provision your thermostats.

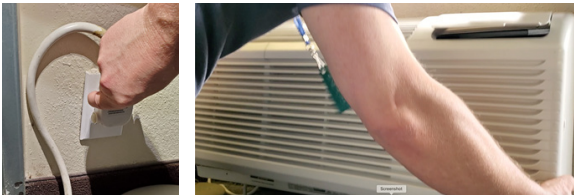
**Note:** You must create separate profiles for Conventional PTACs vs Heat Pumps for the unit to function properly.

Be sure to have a USB-C to USB-C cable as you will need to connect your smart device to the USB-C input terminal on the thermostat for provisioning.

## LET'S GET STARTED

1

Power down the PTAC and remove the cover.



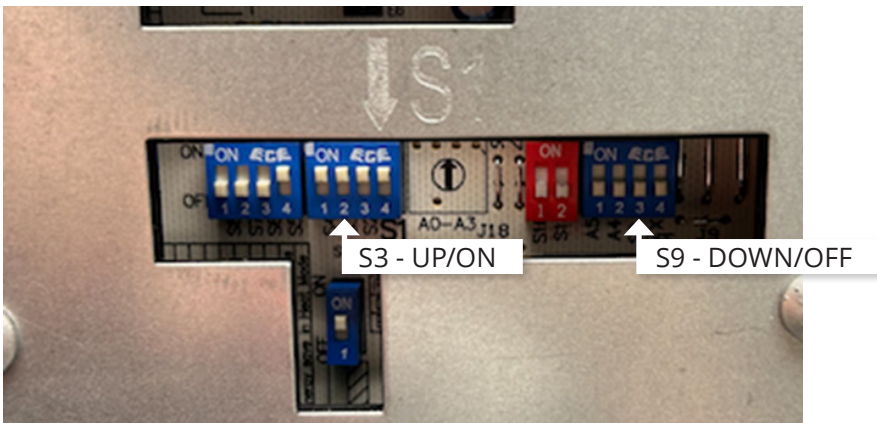
2

Using a Philips screwdriver, remove the cover panel to access the Wired Thermostat Terminal panel.



3

Using a precision screwdriver, change the Dip Switches positions for S3 (Up/On) and S9 (Dn/Off) to enable Wall Thermostat control. Note: Switch labels are located on the PCB, just below the switch assembly.

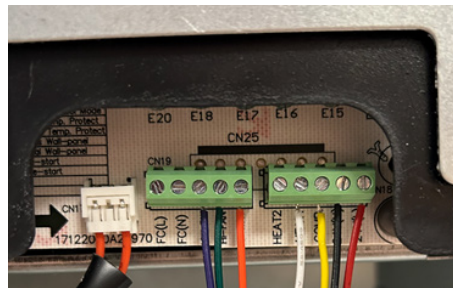
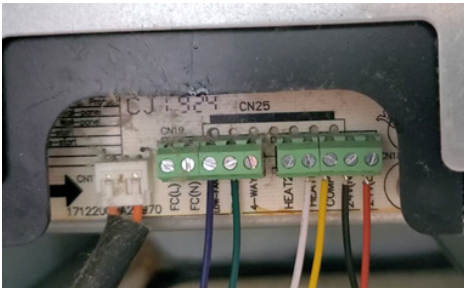


## 4

Attach the VTech Wiring Harness to the appropriate wired thermostat terminals.

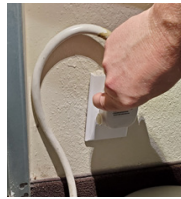
Conventional PTAC – 1Heat / 1Cool / 2 Fan

PTHP – Heat Pump / Electric Heat / 2 Fan



## 5

Plug the VTech Wiring Harness into the Controller module. Press the connector firmly to ensure it snaps into place securely. Then, restore power to the PTAC/PTHP.



## 6

Install the batteries into the thermostat. Tap any key to wake the thermostat. The LED on the controller will change from alternating Green/Red, to solid green to indicate it is paired.



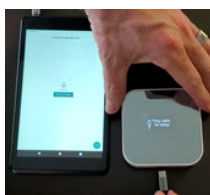
## 7

Prepare the thermostat for configuration:

1. Tap Menu icon to wake the thermostat.
2. Use Menu and up/down to select:  
System Settings > System Configuration > Adv Config via App > Plug cable for setup



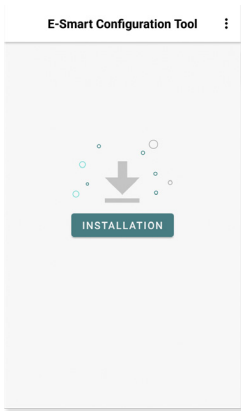
3. Plug the USB-C cable into the thermostat.



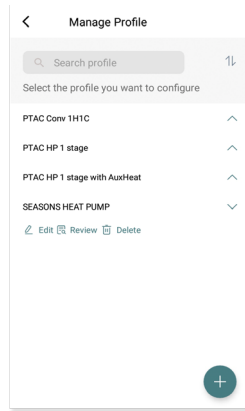
## 8

Using the App, provision the thermostat:

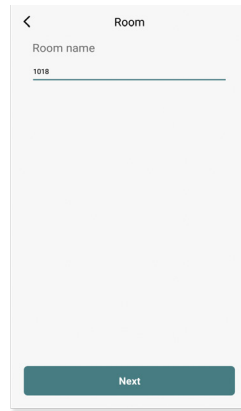
Tap installation to begin



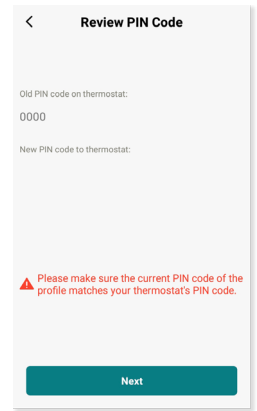
Select a stored profile



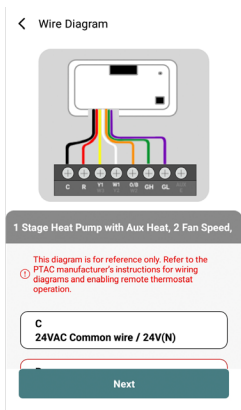
Assign room number (optional)



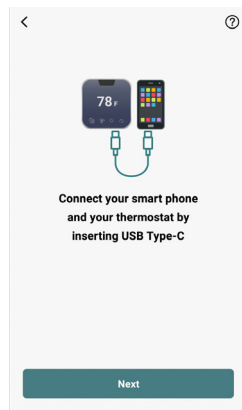
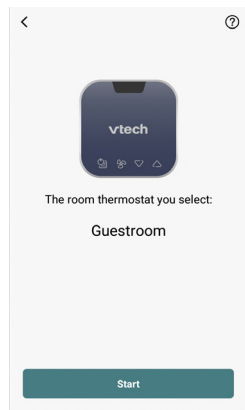
Verify security pin



Confirm wiring diagram



Tap start to begin



Once setup is completed, remove the cable and the thermostat will reboot.

## 9

Test your system-Tap any key to wake, then use UP/DOWN arrows to adjust the target temperature. Verify heat first, then cool.

Note: Short-cycle protection will prevent the compressor from activating for ~3 minutes after power up.



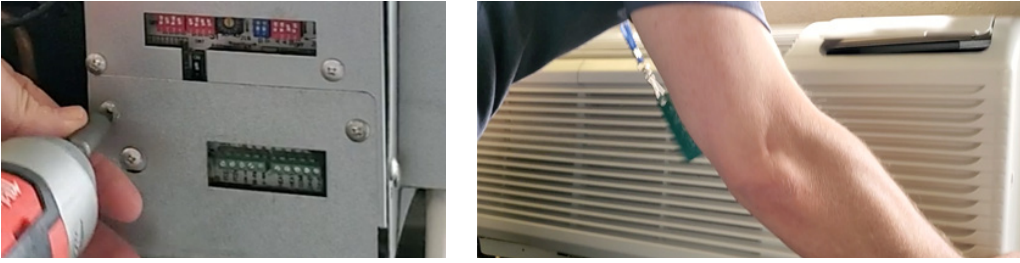
## 10

Mount the controller to the PTAC chase and secure wiring. Cover/protect unused wire leads. Route the wires so they do not sag into the condensation pan.



## 11

Replace the cover panel and cover.



## 12

Use the included mounting hardware to mount the thermostat wall plate to the wall, then secure the thermostat to the wall plate using the security screw. The installation is complete.

