

Installing E-Smart W960 Thermostat - No APP

GE Zoneline® AZ45 & AZ65 Series

PTAC or Heat Pump



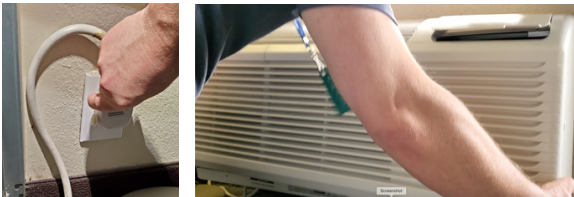
BEFORE YOU BEGIN

If your Heat Pump configuration is something other than 1HP AuxH,2F or 1HP,2F you will need to utilize the EC Tool app to create a custom profile, then select “Adv. Config via App” in the TSTAT menu for the configuration.

LET'S GET STARTED

1

Verify the unit is functioning properly using the face controls prior to installing the thermostat. Power down the PTAC and remove the cover.



2

Locate the Thermostat Wiring Connector that was shipped with your Zonline unit. This is typically located in the basepan area just below the control box.

3

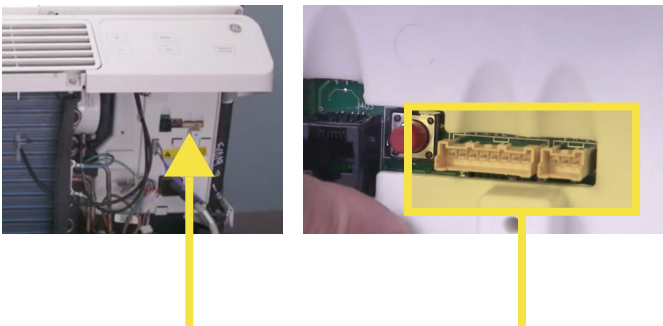
Using wire-nuts, attach the supplied VTech Wiring Harness to the corresponding wires to the Zonline Thermostat Wiring harness.

VTech to Zonline Harness Connection

VTech Controller Wire Harness	GE Zonline Wire Harness
Red (24VAC)	Red—R—24VAC
Black (Common)	Black—C—Common
Purple (Fan Low)	Tan—GL—Fan Low
Green (Fan High)	Green—GH—Fan High
White (Aux Heat)	White—W—Aux Heat
Orange (4-Way/Rev)	Blue—B—Reverse Valve
Yellow (Compressor)	Yellow—Y—Compressor
Brown (Occ Out)	N/A

4

Once the wiring harnesses are connected, plug the Zonline harness connector into the connector socket on the Zonline unit. This socket is located just to the right of the red Aux Set button.



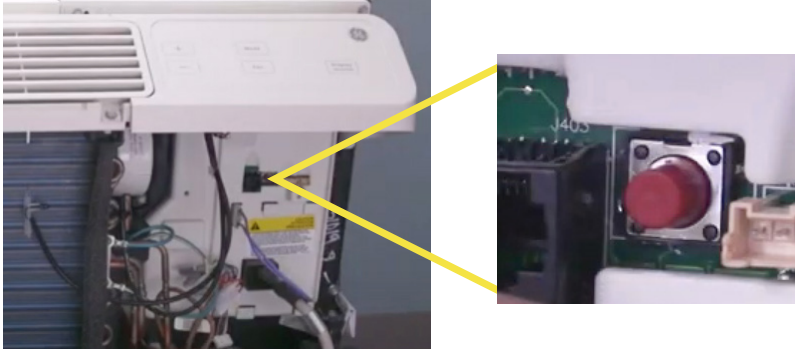
5

Plug the VTech Wiring Harness into the Controller module and press the connector firmly to ensure it snaps into place. Restore power to the PTAC/PTHP.



6

Modify the PTAC configuration settings to enable “Wired Thermostat” functionality:

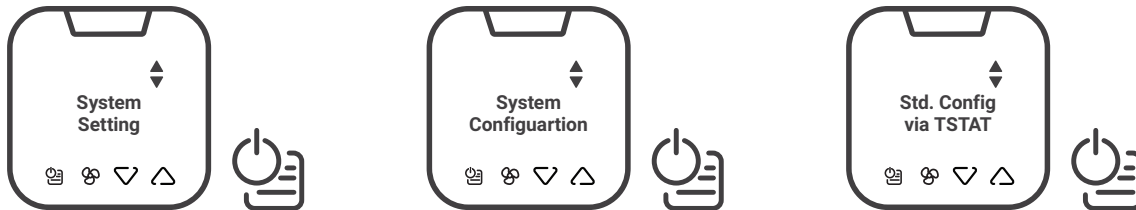


1. Press the red Aux Set button.
2. Using the face controls, press Mode button until the first digit in the display shows MODE 6 (Remote Thermostat).
3. Using the face controls, press the Up arrow to turn this option ON, then press again to select 6A (Auto changeover thermostat).
4. Press the red Aux Set button again to save the setting and exit the configuration mode.

7

How to provision the W960 Thermostat using a standard on-board configuration (without the EC Tool app):

1. Install the 4 AAA batteries into the thermostat, you will see “System Setting” in the display, tap the Power/Menu key to select “System Configuration”, then tap Power/Menu again to select “Std. Config via TSTAT”:



2. Use the Up/Dn arrows to select the type of PTAC you will be controlling. You can choose between “Conventional System” and “Heat Pump System”, then tap the Power/Menu key to select.



Note

If you have a conventional system, continue to step 3. For Heat Pump systems, please move to step 5.

3. **Conventional System** - Select the on-board profile for a Conventional single stage heat and single stage cool system with 2 fan speeds.



Note

If your conventional PTAC is not a 1 stage heat and 1 stage cool system, you will need to utilize the EC Tool app to create a custom profile, then select “Adv. Config via App” in the TSTAT menu for the configuration.

4. Select "Start Configuration" to install the default settings profile.



Once setup complete is displayed, continue to step 8 to set up Occupancy and the System Clock.

5. Heat Pump System – Select the on-board profile for your Heat Pump System, then select between the 2 supported heat pump configurations:

1 stage heat pump with auxiliary heat and 2 fan speeds



or

1 stage heat pump with 2 fan speeds



Note

If your Heat Pump configuration is something other than what is selectable above, you will need to utilize the EC Tool app to create a custom profile, then select "Adv. Config via App" in the TSTAT menu for the configuration.

6. Select the proper Reverse/4-way Valve setting for your heat pump system. Typically, the setting for Amana Heat Pumps will be Energize in Heat (B). You should verify this setting in your PTAC manual.



or



7. Select "Start Configuration" to install the default settings profile.

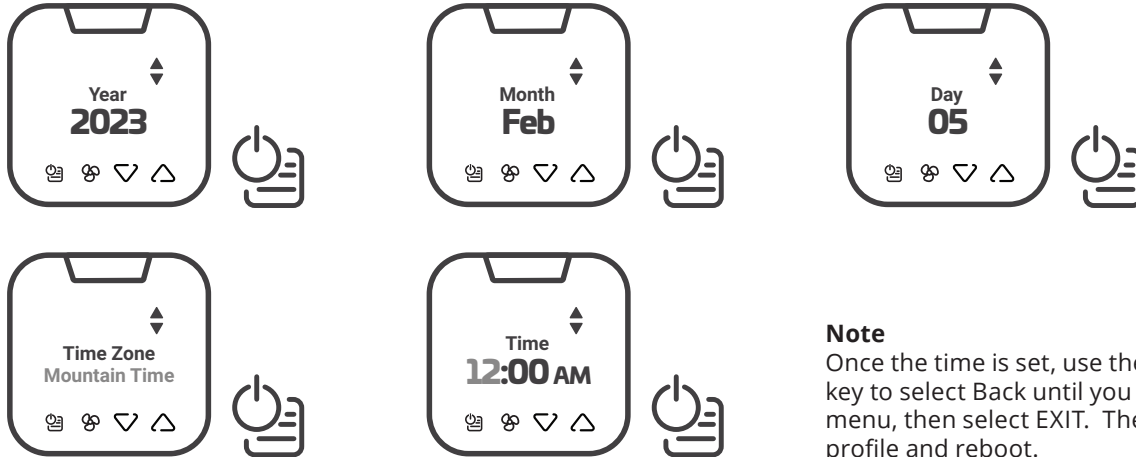


8

Set Occupancy Detection and System Clock - Once the profile is installed and "Setup Completed" has been displayed, you will set occupancy detection and the system clock:



Use Up/Dn arrows to change the selection, then Power/Menu to confirm. You will do this for Setting the date, time zone, and local time.



Note

Once the time is set, use the up/dn and menu key to select Back until you reach the main menu, then select EXIT. The unit will save the profile and reboot.

9

Test your system-Tap any key to wake, then use UP/DOWN arrows to adjust the target temperature. Verify heat first, then cool.

Note

Short-cycle protection will prevent the compressor from activating for ~3 minutes after power up.



10

Mount the controller to the PTAC chassis and secure the wiring. Cover/protect unused wire leads. Route the wires so they do not sag into the condensation pan. Finally, replace the cover to the unit.



Use the included mounting hardware to mount the thermostat wall plate to the wall, then secure the thermostat to the wall plate using the security screw. The installation is complete.



Default Settings

Conventional 1H1C,2F

OPTION	DEFAULT
Compressor short cycle	On
Scale	F
Room temp. calibration	0°F
1st Stage Differential (Heat)	0.5°F
1st Stage Differential (Cool)	0.5°F
Comfort setpoint	74°F
Auto mode deadband	6°F
Auto mode setpoint (Max)	80°F
Auto mode setpoint (Min)	65°F
Heating mode setpoint (Max)	80°F
Heating mode setpoint (Min)	65°F
Cooling mode setpoint (Max)	77°F
Cooling mode setpoint (Min)	64°F
Override mode	ON
Override time out	30min(s)
Protection setpoint	OFF
Fan speed	2 speed
Key tone	ON
Confirmation tone	OFF
Error tone	ON
Reset tone	ON
Sensor (PIR)	ON OFF
Current PIN code on thermostat	0000
Reset PIN code to thermostat	/

Default Settings

Heat Pump with Aux Heat, 2 Fan

OPTION	DEFAULT
Compressor short cycle	On
Scale	F
Room temp. calibration	0°F
1st Stage Differential (Heat)	0.5°F
2nd Stage Differential (Heat)	2°F
1st Stage Differential (Cool)	0.5°F
Comfort setpoint	74°F
Auto mode deadband	6°F
Auto mode setpoint (Max)	80°F
Auto mode setpoint (Min)	65°F
Heating mode setpoint (Max)	80°F
Heating mode setpoint (Min)	65°F
Cooling mode setpoint (Max)	77°F
Cooling mode setpoint (Min)	64°F
Override mode	ON
Override time out	30min(s)
Protection setpoint	OFF
Fan speed	2 speed
Key tone	ON
Confirmation tone	OFF
Error tone	ON
Reset tone	ON
Sensor (PIR)	ON OFF
Current PIN code on thermostat	0000
Reset PIN code to thermostat	/

Default Settings

Heat Pump, 2 Fan

OPTION	DEFAULT
Compressor short cycle	On
Scale	F
Room temp. calibration	0°F
1st Stage Differential (Heat)	0.5°F
1st Stage Differential (Cool)	0.5°F
Comfort setpoint	74°F
Auto mode deadband	6°F
Auto mode setpoint (Max)	80°F
Auto mode setpoint (Min)	65°F
Heating mode setpoint (Max)	80°F
Heating mode setpoint (Min)	65°F
Cooling mode setpoint (Max)	77°F
Cooling mode setpoint (Min)	64°F
Override mode	ON
Override time out	30min(s)
Protection setpoint	OFF
Fan speed	2 speed
Key tone	ON
Confirmation tone	OFF
Error tone	ON
Reset tone	ON
Sensor (PIR)	OFF
Current PIN code on thermostat	0000
Reset PIN code to thermostat	/