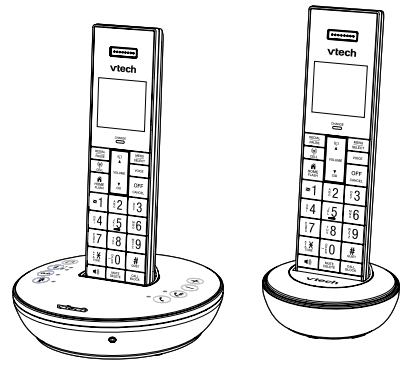


Go to www.vtechphones.com (US) to register your product for enhanced warranty support and latest VTech product news.

Go to phones.vtechcanada.com (CA) for latest VTech product news.

LS6381-2 LS6382-2 VS324-2
 LS6381-3 LS6382-3 VS324-3
 LS6381-4 LS6382-4 VS324-4
 LS6381-5 LS6382-5 VS324-5

DECT 6.0 cordless telephone with BLUETOOTH® wireless technology



Scan the QR code for support information



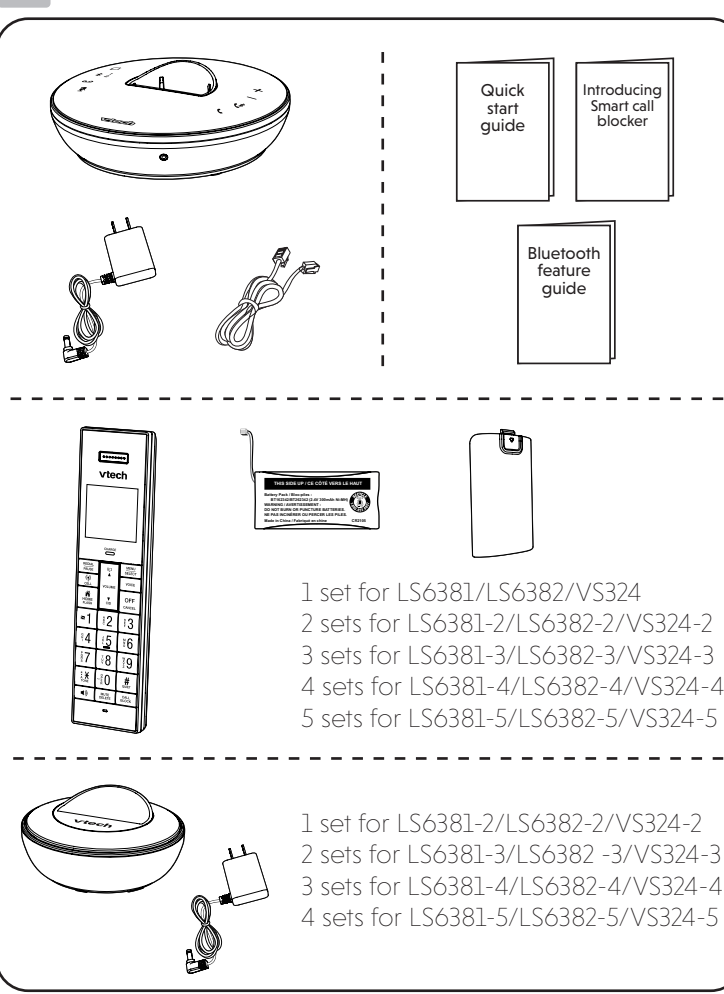
vtech
Quick start guide

IMPORTANT SAFETY INSTRUCTIONS

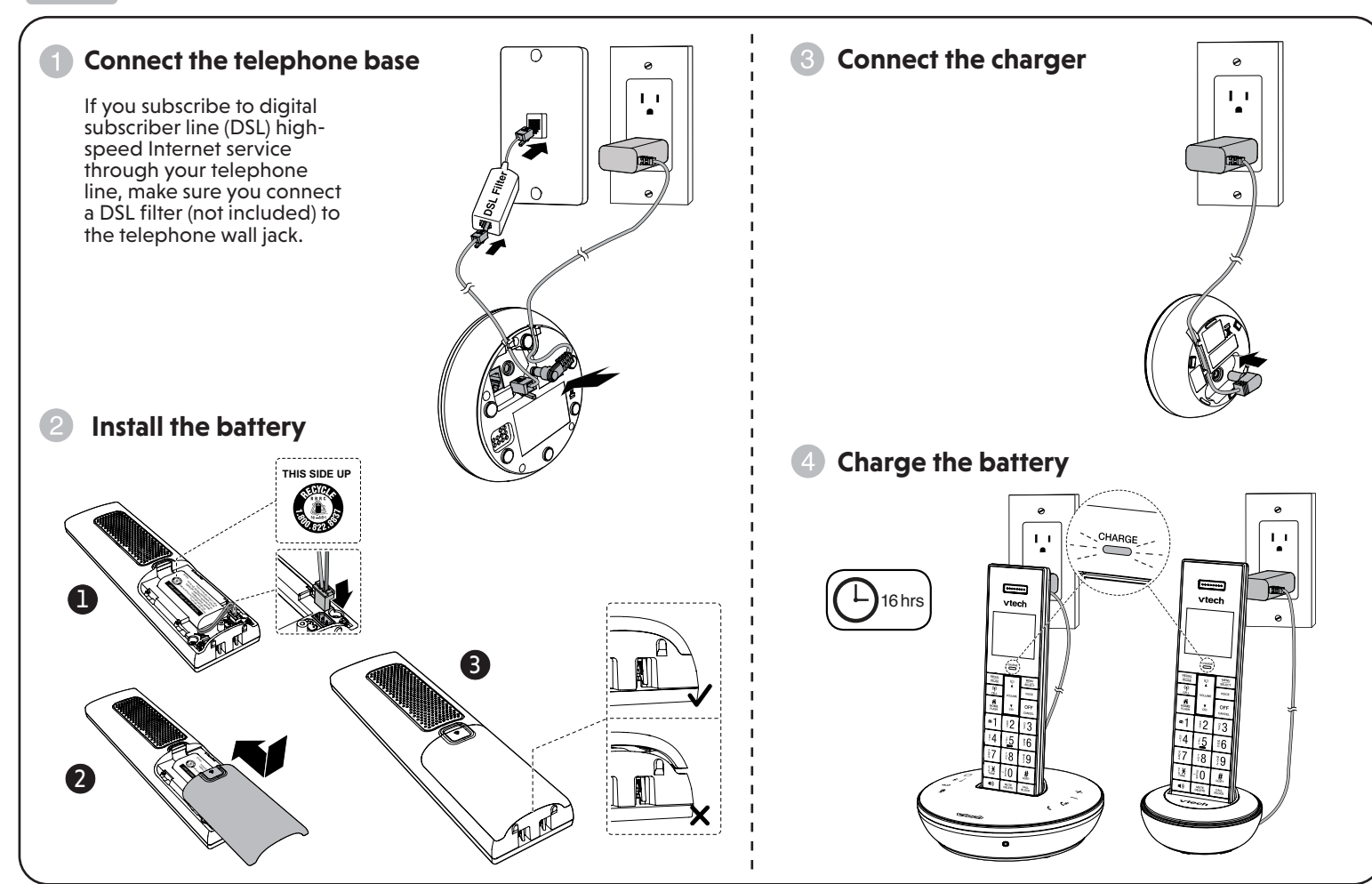
- When using your telephone equipment, basic safety precautions should always be followed to reduce the risk of fire, electric shock and injury, including the following:
- Read and understand all instructions.
 - Follow all warnings and instructions marked on the product.
 - Unplug this product from the wall outlet before cleaning. Do not use liquid or aerosol cleaners. Use a damp cloth for cleaning.
 - CAUTION: Do not install the telephone base at a height above 2 meters. Do not use this product near water such as near a bath tub, wash bowl, kitchen sink, laundry tub or a swimming pool, or in a wet basement or shower.
 - Do not place this product on an unstable table, shelf, stand or other unstable surfaces.
 - Avoid placing the telephone system in places with extreme temperature, direct sunlight, or other electrical devices. Protect your phone from moisture, dust, corrosive liquids and fumes.
 - Slots and openings in the back or bottom of the telephone base and handset are provided for ventilation. To protect them from overheating, these openings must not be blocked by placing the product on a soft surface such as a bed, sofa or rug. This product should never be placed near or over a radiator or heat register. This product should not be placed in any area where proper ventilation is not provided.
 - This product should be operated only from the type of power source indicated on the marking label. If you are not sure of the type of power source in your home or office, consult your dealer or local power company.
 - Do not allow anything to rest on the power cord. Do not install this product where the cord may be walked on.
 - Never push objects of any kind into this product through the slots in the telephone base or handset because they may touch dangerous voltage points or create a short circuit. Never spill liquid of any kind on the product.
 - To reduce the risk of electric shock, do not disassemble this product, but take it to an authorized service facility. Opening or removing parts of the telephone base or handset other than those specified access doors may expose you to dangerous voltages or other risks. Incorrect reassembling can cause electric shock when the product is subsequently used.
 - Do not overload wall outlets and extension cords.

- CAUTION:** Use only the batteries indicated in this manual. There may be a risk of explosion if a wrong type of battery is used. Use only the supplied rechargeable batteries or replacement batteries (BT162342/BT262342). Do not dispose of batteries in a fire. They may explode. Dispose of used battery according to the instruction. Disconnect the telephone line from the equipment before open the battery door.
- Do not use the battery in following conditions:
 - High or low extreme temperature during use, storage or transportation.
 - Replacement of a battery with an incorrect type that can defeat a safeguard.
 - Disposal of a battery into fire or a hot oven, or mechanically crushing or cutting of a battery, that can result in an explosion.
 - Leaving a battery in an extremely high temperature surrounding environment that can result in an explosion or the leakage of flammable liquid or gas.
 - A battery subjected to extremely low air pressure that can result in an explosion or the leakage of flammable liquid or gas.
- Use only the adapter included with this product. Incorrect adapter polarity or disconnection can seriously damage the product.
 - The applied nameplate is located at the bottom or rear of the product.
- SAVE THESE INSTRUCTIONS**
- Battery**
- Use only the batteries provided or equivalent. To order a replacement, visit our website at www.vtechphones.com or call 1 (800) 595-9511. In Canada, go to phones.vtechcanada.com or call 1 (800) 267-7377.
 - Do not dispose of the battery in a fire. Check with local waste management codes for special disposal instructions. Do not open or mutilate the battery. Released electrolyte is corrosive and may cause burns or injury to the eyes or skin. The electrolyte may be toxic if swallowed.
 - Exercise care in handling batteries in order not to create a short circuit with conductive materials.
 - Charge the battery provided with this product only in accordance with the instructions and limitations specified in this manual.
- Precautions for users of implanted cardiac pacemakers**
Cardiac pacemakers (applies only to digital cordless telephones):
- Wireless Technology Research, LLC (WTR), an independent research entity, led a multidisciplinary evaluation of the interference of battery is used. Use only the supplied rechargeable batteries or replacement batteries (BT162342/BT262342). Do not dispose of batteries in a fire. They may explode. Dispose of used battery according to the instruction. Disconnect the telephone line from the equipment before open the battery door.
- Pacemaker patients**
- Should keep wireless telephones at least six inches from the pacemaker.
 - Should NOT place wireless telephones directly over the pacemaker, such as in a breast pocket, when it is turned ON.
 - Should use the wireless telephone at the ear opposite the pacemaker.
- WTR's evaluation did not identify any risk to bystanders with pacemakers from other persons using wireless telephones.
- About cordless telephones**
- Privacy:** The same features that make a cordless telephone convenient create some limitations. Telephone calls are transmitted between the telephone base and the cordless handset by radio waves, so there is a possibility that the cordless telephone conversations could be intercepted by radio receiving equipment within range of the cordless handset. For this reason, you should think of cordless telephone conversations as being as private as those on corded telephones.
 - Electrical power:** The telephone base of this cordless telephone must be connected to a working electrical outlet. The electrical outlet should be controlled by a wall switch. Calls cannot be made from the cordless handset if the telephone base is unplugged, switched off or if the electrical power is interrupted.
 - Potential TV interference:** Some cordless telephones operate at frequencies that may cause interference to televisions and VCRs. To minimize or prevent such interference, do not place the telephone base of the cordless telephone near or on top of a TV or VCR. If interference is experienced, moving the cordless telephone farther away from the TV or VCR often reduces or eliminates the interference.
 - Rechargeable batteries:** Exercise care in handling batteries in order not to create a short circuit with conducting material such as rings, bracelets and keys. The battery or conductor may overheat and cause harm. Observe proper polarity between the battery and the battery charger.
 - Nickel-metal hydride rechargeable batteries:** Dispose of these batteries in a safe manner. Do not burn or puncture the battery. Like other batteries of this type, if burned or punctured, they could release caustic material which could cause injury.

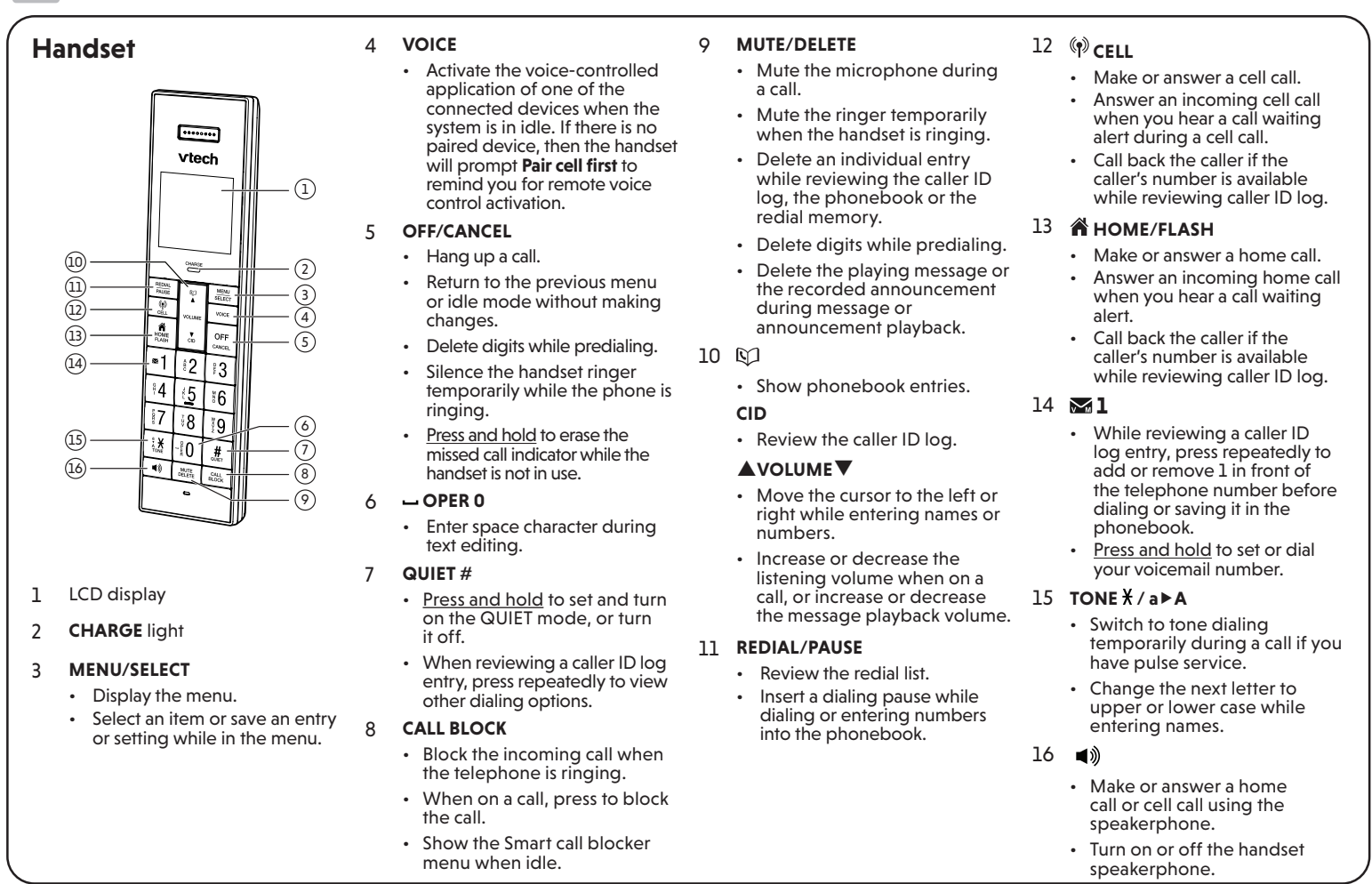
WHAT'S IN THE BOX



CONNECT AND INSTALL



OVERVIEW



OVERVIEW

Handset display

	The handset battery is low and needs charging.
	The handset battery is charging.
	Handset ringer is off.
	New voicemail received from your telephone service provider.
	The entry you are reviewing is new in the caller ID log.
	Displays when Home line is in use.
	Bluetooth device is paired and active.
	Bluetooth device / Cell line is in use.
	Answering system is on.
	Handset displays the current message number being played and the total number of new/old messages recorded.
	The ECO mode activates automatically to reduce power consumption when the handset is within range of the telephone base.

Telephone base

- Charging pole
- (Volume up)
 - Increase the base's speaker/ringer volume.
- (Volume down)
 - Decrease the base's speaker/ringer volume.
- (Cell line)
 - Answer a cell call.
 - Flashes quickly when there is an incoming cell call.
 - Flashes slowly when a cell call is on hold.
 - When a handset is on a cell call, press to join the call.
- (Home line)
 - Answer a home call.
 - Flashes quickly when there is an incoming home call.
 - Flashes slowly when a home call is on hold.
 - When a handset is on a home call, press to join the call.
- Page all system handsets.
- Answer an incoming home or cell call when you receive a call waiting alert.
- (Device 1 / Device 2 slots)
 - Press to switch between device 1 slot and device 2 slot.
 - Press and hold for four seconds to add a cell phone or personal computer.
- Blue LED is steady on when the telephone paired and connected a Bluetooth device.
- Blue LED flashes while pairing a Bluetooth device.
- Purple LED is steady on when in auto-connection mode.
- Red LED is steady on when no device paired or pairing has failed.
- When LED is off, press to connect a paired Bluetooth device.
- (Answering system)
 - Turn the built-in answering system on or off.
 - LED is steady on when answering system is on.
 - LED flashes when there are new messages.
- (Mute)
 - Mute the microphone during a call.
 - LED flashes when microphone is muted.
 - Silence the ringer temporarily while the telephone base is ringing.

SETUP

After you install your telephone or power returns following a power outage and battery depletion, the handset will prompt you to set the date and time, and to configure the Smart call blocker* and answering system through voice guide.

Date and time
Follow the steps below to set the date and time.
For example, if the date is 25 April, 2022, and the time is 12:05 PM:

When the handset prompts you to set the date and time:

- Press MENU.
- Press ▼ CID or ▲ to scroll to **Set date/time**, then press **SELECT**.
- Enter the date, then press **SELECT**.
- Enter the time, then press **SELECT**.

Follow the following steps to set the date and time if you skipped the prompt.

- Press MENU.
- Press ▼ CID or ▲ to scroll to **Set date/time**, then press **SELECT**.
- Enter the date, then press **SELECT**.
- Enter the time, then press **SELECT**.

Voice guide for Smart call blocker / Answering system

After setting the date and time, the handset will prompt if you want to set Smart call blocker, and the answering system. For more details, see **Use voice guide to set Smart call blocker** and **Use voice guide to set Answering system** in the Complete user's manual.

When the handset prompts you to set up the Smart call blocker via voice guide:

- Press MENU on the handset to start voice guide setup.
- "Hello! This voice guide will assist you with the basic setup of Smart call blocker"
- Input the designated option numbers as instructed in the voice guide.

When the handset prompts you to set up the answering system via voice guide:

- Press MENU on the handset to start voice guide setup.
- "This voice guide will assist you with the basic setup of your answering system"
- Input the designated option numbers as instructed in the voice guide.

This feature assists you to do the basic setup of the answering system. You can follow the voice guide to record your own announcement, set the number of rings and the message alert tone.

LCD language setting

If you accidentally set the LCD language to Spanish or French, you can change the LCD language back to English while the telephone is not in use:

- On the handset, press MENU and then enter *64#.

*Includes licenced Galtel™ technology. Galtel™ is a trademark of Truecall Group Limited.

OPERATE

Make a home call

Handset:

- Press HOME - OR - FLASH
- Enter the phone number.
- Press on the base to join the home call.

Make a cell call

Handset:

- Enter the phone number.
- Press CELL
- Press on the base to join the cell call.

Answer a home call

Handset: Press HOME - OR - FLASH

Telephone base: Press OFF - OR - CANCEL

Answer a cell call

Handset: Press CELL - OR - FLASH

Telephone base: Press OFF - OR - CANCEL

End a home call

Handset: Press OFF - OR - CANCEL

End a cell call

Handset: Press OFF - OR - CANCEL

Volume

Handset: Press VOLUME

Telephone base: Press + - OR - -

NEED HELP?

For operations and guides to help you using your telephone system, and for latest information and supports, go and check the online help topics and online FAQs.

Use your smartphone or mobile device to access our online help.

- Go to <https://help.vtechphones.com/ls6381;https://help.vtechphones.com/vs324>; OR
- Scan the QR code on the right. Launch the camera app or QR code scanner app on your smartphone or tablet. Hold the device's camera up to the QR code and frame it.

Tap the notification to trigger the redirection of the online help.

- If the QR code is not clearly displayed, adjust your camera's focus by moving your device closer or further away until it is clear.

You can also call our Customer Support at

- 1 (800) 595-9511 [in US] or
- 1 (800) 267-7377 [in Canada] for help.

LS6381-X (US) VS324-X (US) LS6381-X (CA)

Specifications

Technical specifications

Call block: 1000 entries

Memory: Phonebook: 1000 memory locations; Caller ID log: 50 memory locations; up to 24 digits and 15 characters; up to 30 digits and 15 characters.

Power requirement: Handset: 2.4V Ni-MH battery; Telephone base: 5V DC @ 1A

Channels: 5

Frequency control: Crystal controlled PLL synthesizer

Transmit frequency: Handset: 192.156-1928.448 MHz; Telephone base: 192.156-1928.448 MHz

Star Mark indicating it meets the latest energy efficiency guidelines.

The ENERGY STAR program (www.energystar.gov) recognizes and rewards products that save energy and help protect our environment. We are proud to mark this product with the ENERGY STAR label indicating it meets the latest energy efficiency guidelines.

The Bluetooth® word mark and logo are owned by Bluetooth SIG, Inc. and any use of such marks by Vtech Holdings Limited is under license. Vtech Holdings Limited is a member of Bluetooth SIG, Inc. Other trademarks and trade names are those of their respective owners.

Specifications are subject to change without notice.

© 2022 Vtech Communications, Inc. All rights reserved. 03/22 LS6381-X VS324-X OSQ_V3

