

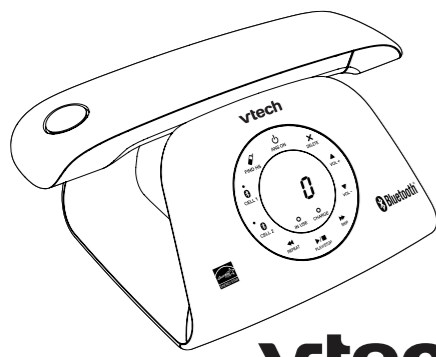
# VS122 VS122-16



(US)



(CA)



**vtech**

Scan the QR code for support information Quick start guide

## 1 Overview

### Handset

<ul style="list-style-type: none"> <li>Press <b>MENU SELECT</b> to show the menu options.</li> <li>While in the menu, press to select an item or save an entry or setting.</li> </ul>	<ul style="list-style-type: none"> <li>Quick access to Smart call blocker.</li> </ul>
<ul style="list-style-type: none"> <li>During a call, press to hang up.</li> <li>While in a menu, press to return to the previous menu, or <b>press and hold</b> to return to idle mode, without making changes.</li> <li>Press to delete digits while predialing.</li> <li>While the phone is ringing, press to silence the ringer temporarily.</li> <li><b>Press and hold</b> to erase the missed call indicator when the handset is not in use.</li> </ul>	<ul style="list-style-type: none"> <li>Press to make or answer a call using the handset speakerphone.</li> <li>During a call, press to switch between the handset speakerphone and the handset earpiece.</li> </ul>
<ul style="list-style-type: none"> <li>Press to review the phonebook when the phone is not in use.</li> <li>Press to scroll up while in a menu, or in the phonebook, caller ID log or redial list.</li> <li>While entering names or numbers, press to move the cursor to the right (▲) and left (▼).</li> <li>During a call or message playback, press to increase (▲) or decrease (▼) the listening volume.</li> </ul>	<ul style="list-style-type: none"> <li>Press to switch to tone dialing during a call if you have pulse service.</li> <li>While entering numbers, <b>press and hold</b> to insert a dialing pause.</li> <li>While entering names, press to change the next letter to upper or lower case.</li> </ul>

### Important safety instructions

When using your telephone equipment, basic safety precautions should always be followed to reduce the risk of fire, electric shock and injury, including the following:

- Read and understand all instructions.
- Follow all warnings and instructions marked on the product.
- Use only with UL listed Bluetooth devices.
- Unplug this product from the wall outlet before cleaning. Do not use liquid or aerosol cleaners. Use a damp cloth for cleaning.
- CAUTION:** Do not install the telephone base at a height above 2 meters.
- Do not use this product near water such as near a bath tub, wash bowl, kitchen sink, laundry tub or a swimming pool, or in a wet basement or shower.
- Do not place this product on an unstable table, shelf, stand or other unstable surfaces.
- Avoid placing the telephone system in places with extreme temperature, direct sunlight, or other electrical devices. Protect your phone from moisture, dust, corrosive liquids and fumes.
- Slots and openings in the back or bottom of the telephone base and handset are provided for ventilation. To protect them from overheating, these openings must not be blocked by placing the product on a soft surface such as a bed, sofa or rug. This product should never be placed near or over a radiator or heat register. This product should not be placed in any area where proper ventilation is not provided.
- This product should be operated only from the type of power source indicated on the marking label. If you are not sure of the type of power supply in your home or office, consult your dealer or local power company.
- Do not allow anything to rest on the power cord. Do not install this product where the cord may be walked on.
- Never push objects of any kind into this product through the slots in the telephone base or handset because they may touch dangerous voltage

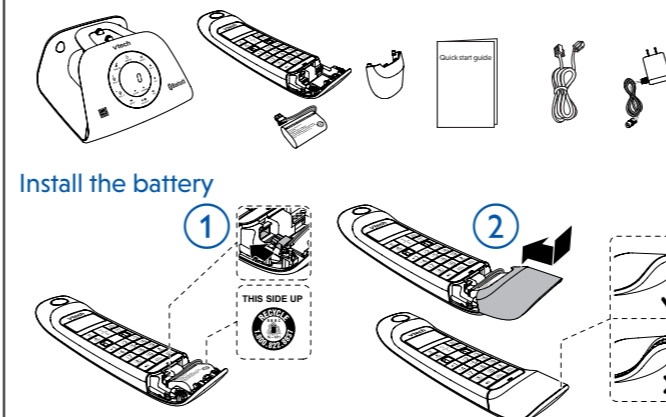
- points or create a short circuit. Never spill liquid of any kind on the product. To reduce the risk of electric shock, do not disassemble this product, but take it to an authorized service facility. Opening or removing parts of the telephone base or handset other than specified access doors may expose you to dangerous voltages or other risks. Incorrect reassembling can cause electric shock when the product is subsequently used.
- Do not overload wall outlets and extension cords.
- Unplug this product from the wall outlet and refer servicing to an authorized service facility under the following conditions:
  - When the power supply cord or plug is damaged or frayed.
  - If liquid has been spilled onto the product.
  - If the product has been exposed to rain or water.
  - If the product does not operate normally by following the operating instructions. Adjust only those controls that are covered by the operation instructions. Improper adjustment of other controls may result in damage and often requires extensive work by an authorized technician to restore the product to normal operation.
  - If the product has been dropped and the telephone base and/or handset has been damaged.
  - If the product exhibits a distinct change in performance.
- Avoid using a telephone (other than cordless) during an electrical storm. There is a remote risk of electric shock from lightning.
- Do not use the telephone to report a gas leak in the vicinity of the leak. Under certain circumstances, a spark may be created when the adapter is plugged into the power outlet, or when the handset is replaced in its cradle. This is a common event associated with the closing of any electrical circuit. The user should not plug the phone into a power outlet, and should not put a charged handset into the cradle, if the phone is located in an environment containing concentrations of flammable or flame-supporting gases, unless there is adequate ventilation. A spark in such an environment could create a fire or explosion. Such environments might include: medical use of oxygen without adequate ventilation; industrial gases (cleaning solvents; gasoline

- vapors; etc.); a leak of natural gas; etc.
- Only put the handset of your telephone next to your ear when it is in normal talk mode.
- The power adapter is intended to be correctly oriented in a vertical or floor mount position. The prongs are not designed to hold the plug in place if it is plugged into a ceiling, under-the-table or cabinet outlet.
- For pluggable equipment, the socket-outlet shall be installed near the equipment and shall be easily accessible.
- CAUTION:** Use only the batteries indicated in this manual. There may be a risk of explosion if a wrong type of battery is used for the handset. Use only the supplied rechargeable batteries or replacement batteries (BT133642/BT283642) for the handset. Do not dispose of batteries in a fire. They may explode. Disposed of used batteries according to the instruction.
  - Do not use the battery in following conditions:
    - High or low extreme temperature during use, storage or transportation.
    - Replacement of a battery with an incorrect type that can defeat a safeguard.
  - Disposal of a battery into fire or a hot oven, or mechanically crushing or cutting of a battery, that can result in an explosion.
  - Leaving a battery in an extremely high temperature surrounding environment that can result in an explosion or the leakage of flammable liquid or gas.
  - A battery subjected to extremely low air pressure that can result in an explosion or the leakage of flammable liquid or gas.
- Only the adapter included with this product. Incorrect adapter polarity or voltage can seriously damage the product.
- The applied nameplate is located at the bottom or near of the product.

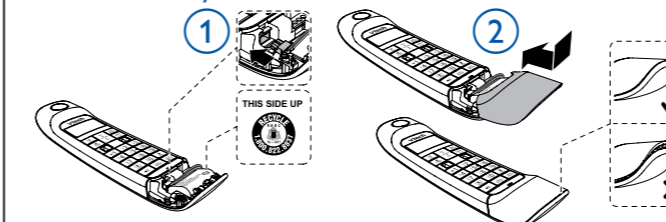
**SAVE THESE INSTRUCTIONS**

## What's in the box

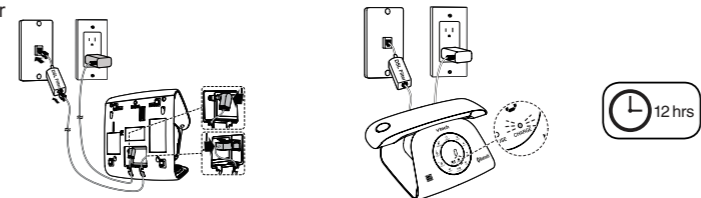
Your telephone package contains the following items. Save your sales receipt and original packaging in case it is necessary to ship your telephone for warranty service.



### Install the battery



### Connect and charge



Battery indicators	Battery status	Action
• The screen is blank, or shows <b>Put in charger</b> and [ ] flashes.	• The battery has no charge or very little charge. The handset cannot be used.	• Charge without interruption (at least 30 minutes).
• The screen shows <b>Low battery</b> and [ ] flashes.	• The battery has enough charge to be used for a short time.	• Charge without interruption (at least 30 minutes).
• The screen shows <b>HANDSET X</b> .	• The battery is charged.	• To keep the battery charged, place it in the handset charger when not in use.

## 2 Configure your phone

### Set the date and time

- Press **MENU SELECT** to enter the main menu in idle.
- Press ▲/▼ to scroll to **Set date/time**, and then press **MENU SELECT**.
- Press ▲/▼ to scroll to select the month, and then press **MENU SELECT**.
- Press ▲/▼ to scroll to select the date, and then press **MENU SELECT**.
- Press ▲/▼ to scroll to select the year, and then press **MENU SELECT**.
- You can also use dialing keys to enter 2-digit number for month, date, and year.
- Press ▲/▼ to scroll to select the hour, and then press **MENU SELECT**.
- Press ▲/▼ to scroll to select the minute, and then press **MENU SELECT**.
- Press ▲/▼ to scroll to select **AM** or **PM**.

- Press **MENU SELECT** to save the settings.

### Set handset LCD language

- Press **MENU SELECT** to enter the main menu in idle.
- Press ▲/▼ to scroll to **Settings**, and then press **MENU SELECT**.
- Press **MENU SELECT** again to select **LCD language**.
- Press ▲/▼ to scroll to **English, Français or Español**, and then press **MENU SELECT**.
- Press **MENU SELECT** to save your selected language.
- If you accidentally change the LCD language to French or Spanish, you can reset it to English easily by pressing **MENU SELECT** then entering \*364#.

### Set handset ringer

- Press **MENU SELECT** to enter the main menu in idle.

- Press ▲/▼ to scroll to **Ringers**, and then press **MENU SELECT**.
- Press ▲/▼ to scroll through **Home volume, Home ringtone, Cell volume, and Cell ringtone**.

### Ringer volume

- After you selected **Home volume** or **Cell volume**:
- Press ▲/▼ to adjust the volume level, and then press **MENU SELECT**.
  - If you want the Ringer off, press ▼ all the way till you see [X].

### Ringtone

- After you selected **Home ringtone** or **Cell ringtone**:
- Press ▲/▼ to select your preferred ringtone among 10 melodies.
  - Press **MENU SELECT** to save.

## 3 Bluetooth

To use a Bluetooth enabled cell phone with your VS122/VS122-16, you must first pair and connect it with the telephone base. The VS122/VS122-16 telephone base and all system handsets can be used to make or answer calls on the cell phone line. Bluetooth wireless technology operates within a short range (a maximum of approximately 30 feet). When you pair a Bluetooth cell phone to the telephone base, make sure your Bluetooth cell phone is close to the telephone base to maintain sufficient signal strength. For optimal performance, keep your cell phone within 15 feet of the telephone base while using the cell line.

### Add a cell phone

- Press and hold [CELL 1] or [CELL 2] on the base to activate Bluetooth pairing.
  - The light starts flashing when the base is ready to pair.
- Turn on the Bluetooth of your cell phone to scan for **VTech DECT 6.0**.
  - Your cell phone will prompt and ask you whether to pair with it. Press **OK** to confirm.
  - Once paired, the light of [CELL 1] or [CELL 2] on the base illuminate, and [CELL 1] or [CELL 2] displays on the handset.

## 4 Phonebook

The phonebook can store up to 1,000 entries, which are shared by all handsets and the telephone base. Each entry may consist of a telephone number up to 30 digits, and a name up to 15 characters.

### Add a phonebook entry

- Press **MENU SELECT** to enter the main menu in idle.
- Press ▲/▼ → **Phonebook** → **MENU SELECT**.
- Press **MENU SELECT** to select **Add new entry**.
- Enter the number, and then press **MENU SELECT**. Enter the name, and then press **MENU SELECT**.

### Review phonebook entries

Press [ ] → ▲/▼ to review phonebook entries.

### Dial a phonebook entry

When your desired entry displays, press **HOME FLASH** / **CELL** / [ ] to dial.

### Delete a phonebook entry

When your desired entry displays, press **MUTE DELETE** (handset) or **X DELETE** (base). Press **MENU SELECT** to confirm.

## 5 Caller ID

If you subscribe to caller ID service, information about each caller appears after the first or second ring. The caller ID log stores up to 50 entries. Each entry has up to 24 digits for the phone number and 15 characters for the name.

### Review caller ID log entries

Press **CID** → ▲/▼ to browse the entries.

### Save a caller ID log entry to the phonebook

- Press **CID** → ▲/▼ to scroll to your desired caller ID entry.
- Press **MENU SELECT** → **MENU SELECT** to choose **To Phonebook**.
- Edit the number if needed, and then press **MENU SELECT**.
- Edit the name if needed, and then press **MENU SELECT**.

### Dial a caller ID log entry

- Press **CID** → ▲/▼ to scroll to your desired caller ID entry.
- Press **HOME FLASH** / **CELL** to dial.

### Delete a caller ID log entry

- Press **CID** → ▲/▼ to scroll to your desired caller ID entry.
- Press **MUTE DELETE** (handset) or **X DELETE** (base).

### Base

<ul style="list-style-type: none"> <li>Press to turn the answering system on or off.</li> </ul>	<ul style="list-style-type: none"> <li>Press to delete the playing message.</li> <li>Press twice to delete all old messages when in idle.</li> </ul>
<ul style="list-style-type: none"> <li>Press to page the system handset.</li> </ul>	<ul style="list-style-type: none"> <li>Press to increase the listening volume during a call or message playback.</li> <li>Press to increase the telephone base ringer volume when the base is not in use.</li> </ul>
<ul style="list-style-type: none"> <li>Light on when the bluetooth device is paired and active.</li> <li>Flashes when bluetooth is activated and ready to pair.</li> </ul>	<ul style="list-style-type: none"> <li>Press to decrease the listening volume during a call or message playback.</li> <li>Press to decrease the telephone base ringer volume when the base is not in use.</li> </ul>
<ul style="list-style-type: none"> <li>Light on when the bluetooth device is paired and active.</li> <li>Flashes when bluetooth is activated and ready to pair.</li> </ul>	<ul style="list-style-type: none"> <li>Press to skip to the next message.</li> </ul>
<ul style="list-style-type: none"> <li>Press to repeat the playing message.</li> <li>Press twice to play the previous message.</li> </ul>	<ul style="list-style-type: none"> <li>Press to play messages.</li> <li>Press to stop playing messages.</li> </ul>

### Handset display icons

	• The handset battery is low and needs charging.
	• The handset battery is charging.
	• The handset battery is fully charged.
	• The ECO mode activates automatically to reduce power consumption when the handset is within range of the telephone base.
	• New voicemail received from your telephone service provider.
	• Displays when Home line is in use.
	• Bluetooth device is paired and active.
	• Bluetooth device / Cell line is in use.
	• There are new caller ID log entries
	• Answering system is on.
	• Time with AM and PM.
	• Handset ringer is off.
	• Handset displays the current message number being played and the total number of new/old messages recorded.

### Base display

	• Flashes quickly when there is an incoming call.
	• Flashes when another telephone sharing the line is in use.
	• On when the line is in use.
	• On when the handset is charging in the telephone base or charger.
	• Shows the number of messages, and other information of the answering system or telephone base.

The steps for the pairing process may vary for different cell phones. If this happens, follow the prompts on your cell phone and your VS122-16 to complete the pairing process.

### Auto connection

Cell phone(s) may disconnect from the base when:-

- Your cell phone's Bluetooth feature is off.
- Your cell phone is power off.
- Your cell phone is out of range from the telephone base.

Make sure your cell phone and its Bluetooth feature is on, then move it closer to the base. The base will reconnect automatically.

### Review cell device list

- Press **MENU SELECT** to enter the main menu in idle.
- Press ▲/▼ to scroll to **Bluetooth**, and then press **MENU SELECT**.
- Press ▲/▼ to scroll to **Device list**, and then press **MENU SELECT**.

### Download phonebook

You can download up to 1000 entries from your cell phone's phonebooks to VS122/VS122-16. Each entry are stored in the handset phonebook with up to 30 digits for each phone number and 15 characters for each name. Make sure your cell phone is paired anc connected to the base, and the handset battery is charged for at least 10 minutes. Place your cell phone next to the base while downloading.

### Download a cell phone phonebook

- Press **MENU SELECT** to enter the main menu in idle.
- Press ▲/▼ to scroll to **Bluetooth**, and then press **MENU SELECT**.
- Press ▲/▼ to scroll to **Download PB**, and then press **MENU SELECT**.

### Select a device

- **Select a device** displays briefly.
- Press ▲/▼ to scroll to your preferred device, and then press **MENU SELECT**.
  - During the download, the handset flashes **Downloading...**
  - When the process is complete or when the memory is full, the handset displays **Entries added: XXX**.

### TIPS

- Certain cell phones do not support SIM card download. If this is the case, try transferring the contacts from your SIM card to your cell phone memory first, then download from your cell phone memory. For more information on how to transfer contacts from your SIM card to your cell phone memory, see the user's manual of your cell phone.
- When downloading the directory from your Bluetooth enabled cell phone, some data may not transfer. For example, if you have home, mobile and work numbers for a particular contact, the three categories may not transfer to your VS122/VS122-16.
- For certain cell phones, you may need to press a key on your cell phone to confirm the directory download.

## 6 Smart call blocker\* (SCB)

Smart call blocker filters robocalls and unwanted calls for you, while allowing welcome calls to get through. For other unknown home calls, you can block, screen, or forward these calls to the answering system. With Call screening active, Smart call blocker screens and filters all incoming home calls from numbers or names that are not saved in your Phonebook, Block list, or Star name list. You can easily add incoming phone numbers to your Block list. This allows you to build up your lists of allowed and blocked numbers, and Smart call blocker will know how to handle these calls when they call again.

### NOTES

- If you have subscribed to caller ID service, then you can use the Smart call blocker feature to screen incoming calls.
- The screening feature of Smart call blocker is applicable to incoming home calls only. All incoming cell calls will get through and ring. If you want to block a cell call, add the number to the block list.

### Turn Smart call blocker on or off

Smart call blocker is set to on and allows all incoming calls by default. To turn on or off Smart call blocker:

- Press **MENU SELECT** to enter the main menu in idle.
- Press ▲/▼ to scroll to **Smart call blk**, and then press **MENU SELECT**.
- Press ▲/▼ to scroll to **SCB On/Off**, and then press **MENU SELECT**.
- Press ▲/▼ to scroll to **On** or **Off**, and then press **MENU SELECT**.
  - If you turn off Smart call blocker, all incoming calls will ring, including those in your block list.

### Set up allow list/ block list/ start name list

#### Add numbers manually

- Press **MENU SELECT** to enter the main menu in idle.
- Press ▲/▼ to **Smart call blk** → **MENU SELECT**.

Adding a new number to the block list	3. Press ▲/▼ → <b>Block list</b> → <b>MENU SELECT</b> .
	4. Press ▲/▼ → <b>Add new entry</b> → <b>MENU SELECT</b> .
	5. Enter a telephone number (up to 30 digits), and then press <b>MENU SELECT</b> .
	6. Enter a name (up to 15 characters), and then press <b>MENU SELECT</b> .
	• Repeat Step 4 to add another contact.

Specifications are subject to change without notice.  
© 2024 VTech Communications, Inc.  
© 2024 VTech Technologies Canada Ltd.  
All rights reserved. 03/24  
VS122-X-QSG-V4.0\_240312

Need help?  
For operators and guides to help you using your telephone, and topics and online FAQs.  
Use your smartphone or mobile device to access our online help. Go to <https://help.vtechphones.com/VS122-16> (US) or <https://help.vtechphones.com/en/support/VS122-16> (Canada) to access our online help. Scan the QR code on the right. Launch the camera app or QR code scanner app on your smartphone or tablet. Hold the device's camera up to the QR code and frame it. Tap the notification to trigger the redirection of the online help.  
- If the QR code is not clearly displayed, adjust your camera's focus by moving your device closer or further away until it is clear.  
You can also call our Customer Support at 1 (800) 595-9511 (in US) or 1 (800) 267-7377 (in Canada) for help.

(CA) (US) (SN)



## Smart call blocker\* (SCB) - cont

<p>Adding a new number to the allow list</p>	<ol style="list-style-type: none"><li>Press <b>▲/▼</b> → <b>Allow list</b> → <span>MENU SELECT</span>.</li> <li>Press <b>▲/▼</b> → <b>Add new entry</b> → <span>MENU SELECT</span>.</li> <li>Enter a telephone number (up to 30 digits), and then press <span>MENU SELECT</span>.</li> <li>Enter a name (up to 15 characters), and then press <span>MENU SELECT</span>.</li> <li>Repeat Step 4 to add another contact.</li></ol>
<p>Adding a new name to the star name list</p>	<ol style="list-style-type: none"><li>Press <b>▲/▼</b> → <b>Star name list</b> → <span>MENU SELECT</span>.</li> <li>Press <b>▲/▼</b> → <b>Add new entry</b> → <span>MENU SELECT</span>.</li> <li>Enter a name (up to 15 characters), and then press <span>MENU SELECT</span>.</li> <li>Repeat Step 4 to add another contact.</li></ol>

### Add numbers from caller ID log

- Press cid to enter the caller ID log in idle.
- Press **▲/▼** to locate the desired entry → MENU SELECT.

<p>Adding CID log entry to block list</p>	<ol style="list-style-type: none"><li>Press <b>▲/▼</b> → <b>To Block list</b> → <span>MENU SELECT</span>.</li> <li>Press <span>MENU SELECT</span> twice.</li></ol>
<p>Adding CID log entry to allow list</p>	<ol style="list-style-type: none"><li>Press <b>▲/▼</b> → <b>To Allow list</b> → <span>MENU SELECT</span>.</li> <li>Press <span>MENU SELECT</span> twice.</li></ol>
<p>Adding a new name to the star name list</p>	<ol style="list-style-type: none"><li>Press <b>▲/▼</b> → <b>To Star name list</b> → <span>MENU SELECT</span>.</li> <li>Press <span>MENU SELECT</span> twice.</li></ol>

### Call controls

Call categories	Call control and options
<b>Unwelcome calls</b>	Numbers saved in block list. The telephone blocks these calls from ringing through.

<p>Adding CID log entry to block list</p>	<ol style="list-style-type: none"><li>Press <b>▲/▼</b> → <b>To Block list</b> → <span>MENU SELECT</span>.</li> <li>Press <span>MENU SELECT</span> twice.</li></ol>
<p>Adding CID log entry to allow list</p>	<ol style="list-style-type: none"><li>Press <b>▲/▼</b> → <b>To Allow list</b> → <span>MENU SELECT</span>.</li> <li>Press <span>MENU SELECT</span> twice.</li></ol>
<p>Adding a new name to the star name list</p>	<ol style="list-style-type: none"><li>Press <b>▲/▼</b> → <b>To Star name list</b> → <span>MENU SELECT</span>.</li> <li>Press <span>MENU SELECT</span> twice.</li></ol>

Call categories	Call control and options
<b>Unwelcome calls</b>	Numbers saved in block list. The telephone blocks these calls from ringing through.

- Battery**
  - Use only the batteries provided or equivalent. To order a replacement, visit our website at [www.vtechphones.com](http://www.vtechphones.com) or call 1 (800) 595-9511.
  - In Canada, go to [phones.vtechcanada.com](http://phones.vtechcanada.com) or call 1 (800) 267-7377.
  - Do not dispose of the battery in a fire. Check with local waste management codes for special disposal instructions.
  - Do not open or mutilate the battery. Released electrolyte is corrosive and may cause burns or injury to the eyes or skin. The electrolyte may be toxic if swallowed.
  - Exercise care in handling batteries in order not to create a short circuit with conductive materials.
  - Charge the battery provided with this product only in accordance with the instructions and limitations specified in this manual.

#### Precautions for users of implanted cardiac pacemakers

Cardiac pacemakers (applied only to digital cordless telephones): Wireless Technology Research, LLC (WTR), an independent research entity, led a multidisciplinary evaluation of the interference between portable wireless telephones and implanted cardiac pacemakers. Supported by the U.S. Food and Drug Administration, WTR recommends to physicians that:

- Pacemaker patients**
  - Should keep wireless telephones at least six inches from the pacemaker.
  - Should NOT place wireless telephones directly over the pacemaker, such as in a breast pocket, when it is turned ON.
  - Should use the wireless telephone at the ear opposite the pacemaker.

WTR's evaluation did not identify any risk to bystanders with pacemakers from other persons using wireless telephones.

#### About cordless telephones

- Privacy:** The same features that make a cordless telephone convenient create some limitations. Telephone calls are transmitted between the telephone base and the cordless handset by radio waves, so there is a possibility that the cordless telephone conversations could be intercepted by radio receiving equipment within range of the cordless handset. For this reason, you should not think of cordless telephone conversations as being as private as those on corded telephones.
- Electrical power:** The telephone base of this cordless telephone must be connected to a working electrical outlet. The electrical outlet should not be controlled by a wall switch. Calls cannot be made from the cordless handset if the telephone base is unplugged, switched off or if the electrical power is interrupted.
- Potential TV interference:** Some cordless telephones operate at frequencies that may cause interference to televisions and VCRs. To minimize or prevent such interference, do not place the telephone base of the cordless telephone near or on top of a TV or VCR. If interference is experienced, moving the cordless telephone farther away from the TV or VCR often reduces or eliminates the interference.
- Rechargeable batteries:** Exercise care in handling batteries in order not to create a short circuit with conducting material such as rings, bracelets and keys. The battery or conductor may overheat and cause harm. Observe proper polarity between the battery and the battery charger.
- Nickel-metal hydride rechargeable batteries:** Dispose of these batteries in a safe manner. Do not burn or puncture the battery. Like other batteries of this type, if burned or punctured, they could release caustic material which could cause injury.

## For C-UL compliance only

- Mesures de sécurité importantes**
- Afin de réduire les risques d'incendie, de blessures corporelles ou d'électrocution, suivez toujours ces mesures préventives de base lorsque vous utilisez votre téléphone :
- Lisez et comprenez bien toutes les instructions.
  - Observez toutes les instructions et mises en garde inscrites sur l'appareil.
  - N'utilisez qu'avec des dispositifs Bluetooth homologués par UL.
  - Débranchez ce Téléphone de la prise murale avant de le nettoyer. N'utilisez pas de nettoyeurs liquides ni en aérosol. N'utilisez qu'un chiffon doux et légèrement humecté.
  - ATTENTION:** Ne pas installer le socle téléphonique à une hauteur supérieure à 2 mètres.
  - N'utilisez pas ce produit près du feu, tel que près d'un bain, d'un lavabo, d'un évier de cuisine, d'un bac de lavage ou d'une piscine, ou dans un sousol humide ou sous la douche.
  - Ne déposez pas ce Téléphone sur un chariot, support ou table chancelants. L'appareil pourrait tomber et être sérieusement endommagé.
  - Évitez d'utiliser le système téléphonique dans des endroits soumis à une température extrême, à la lumière directe du soleil ou à proximité immédiate d'autres appareils électriques ou électroniques. Protégez votre téléphone contre les sources d'humidité, la poussière, les vapeurs et les liquides corrosifs.
  - Le boîtier de l'appareil est doté de fentes et d'ouvertures d'aération situées à l'arrière ou en dessous. Afin d'empêcher la surchauffe, ces ouvertures ne doivent pas être obstruées en plaçant l'appareil sur un lit, divan, tapis ou autre surface similaires. Ne placez pas cet appareil proximité d'un élément de chauffage ni d'une plinthe électrique. De plus, ne l'installez pas dans une unité murale ou un cabinet fermé qui ne possède pas d'aération adéquate.
  - Ne faites fonctionner cet appareil qu'avec le type d'alimentation indiquée sur les étiquettes de l'appareil. Si vous ne connaissez pas le voltage de votre maison, consultez votre marchand ou votre fournisseur d'électricité.
  - Ne déposez rien sur le cordon d'alimentation. Installez cet appareil dans un endroit sécuritaire, là où personne ne pourra trébucher sur la ligne d'alimentation ni le cordon téléphonique modulaire.
  - N'insérez jamais d'objets à travers les fentes et ouvertures de cet appareil, car ils pourraient toucher à des points de tension dangereux ou court-circuiter des pièces, ce qui constituerait un risque d'incendie ou d'électrocution. N'échappez pas de

Call categories	Call control and options
<b>Welcome calls</b>	<ul style="list-style-type: none"><li>Numbers saved in allow list.</li> <li>Numbers saved in phonebook.</li> <li>Numbers not found in block list.</li> <li>Caller ID names saved in start name list.</li></ul> <p>The telephone allows these calls to get through and ring.</p> <p>All incoming cell calls will get through and ring by default. If you want to block a cell call, then you need to add its number to the block list.</p>
<b>Unknown calls (for home calls only)</b>	<p>Uncategorized calls</p> <ul style="list-style-type: none"><li>With absent caller ID number.</li> <li>Numbers not found in phonebook.</li> <li>Numbers not found in block list.</li> <li>With caller ID names not found in star name list.</li></ul> <p>You can select one of the following five profile options for handling all unknown home calls.</p> <p><b>Screen unknown</b></p> <p>The telephone plays the screening announcement, and then ask the caller to press the pound key (#) before the call rings on your telephone. You can then answer the call, and hear the caller's name announced. You can decide whether to accept or reject the call, or to forward the call to the answering system.</p> <p><b>Screen robot</b></p> <p>The telephone plays the screening announcement, and then ask the caller to press the pound key (#) before the call rings on your telephone. You can then answer the call.</p> <p><b>Allow unknown</b></p> <p>The telephone forwards these calls to the answering system without ringing.</p> <p><b>Block unknown</b></p> <p>The telephone rejects these calls with block announcement without ringing. The caller's number, even if it's available, will not be saved to the block list.</p>
<b>Calls without numbers</b> <ul style="list-style-type: none"><li>Numbers that are "out of area" or set to "Private".</li></ul>	<p>You can select one of the following five profile options for handling all unknown home calls.</p> <p><b>Screen unknown</b></p> <p>The telephone plays the screening announcement, and then ask the caller to press the pound key (#) before the call rings on your telephone. You can then answer the call.</p> <p><b>Allow unknown</b></p> <p>The telephone forwards these calls to the answering system without ringing.</p> <p><b>Block unknown</b></p> <p>The telephone rejects these calls with block announcement without ringing. The caller's number, even if it's available, will not be saved to the block list.</p>

## Set profile

There are 5 profile setting options, which allows you to quickly set up Smart call blocker.

- Press MENU SELECT to enter the main menu in idle.
- Press **▲/▼** → **Smart call blk** → MENU SELECT.
- Press **▲/▼** → **Set profile** → MENU SELECT.

Set profile	Steps
<b>Screen unknown</b> Screen all unknown home calls	4. Press <b>▲/▼</b> → <b>Screen unknown</b> → <span>MENU SELECT</span> .
<b>Screen robot</b> Screen robocalls	4. Press <b>▲/▼</b> → <b>Screen robot</b> → <span>MENU SELECT</span> .
<b>Allow unknown</b> Block calls on the block list only (default setting)	4. Press <b>▲/▼</b> → <b>Allow unknown</b> → <span>MENU SELECT</span> .
<b>UnknowntoAns.S</b> Forward all unknown home calls to the answering system	4. Press <b>▲/▼</b> → <b>UnknowntoAns.S</b> → <span>MENU SELECT</span> .
<b>Block unknown</b> Block all unknown home calls	4. Press <b>▲/▼</b> → <b>Block unknown</b> → <span>MENU SELECT</span> .

## Add a screened number to the block list or allow list

If you select **Screen unknown** or **Screen robot** in **Set profile**, the telephone plays a screening announcement to the caller, and asks the caller to respond before the call rings through to you.

After the caller responds, the telephone rings and you can then pick up the call. The telephone then asks whether you want to answer or reject the call, or to forward the call to the answering system.

The telephone announces *"To answer the call, press 1. To answer and always allow this number, press 2. To block this number, press 3. To send this call to the answering system, press 4. To repeat these options, press \*\**.

<p>Add current number to the allow list</p>	Press <b>2</b> to answer the home call, and add the current number to the allow list.
<p>Add current number to the block list</p>	Press <b>3</b> to block the home call, and add the current number to the block list.

L'étude effectuée par l'organisme WRS n'a pas identifié de risque pour les détenteurs de simulateurs cardiaques causés par les gens qui utilisent un téléphone sans fil à proximité de ce-uci.

#### À propos des téléphones sans fil

- Alimentation électrique: Les mêmes caractéristiques qui constituent des avantages pour les téléphones sans fil affichent également des restrictions. Les appels téléphoniques sont transmis entre le combiné sans fil et le socle par le biais d'ondes radio ; il y a donc la possibilité que vos conversations téléphoniques sans fil soient interceptées par des équipements de réception radio se trouvant dans la portée du combiné sans fil. Pour cette raison, vous ne devez pas percevoir les communications téléphoniques sans fil comme étant aussi confidentielles.
- Alimentation électrique: Le socle de ce téléphone sans fil doit être branché à une prise électrique fonctionnelle. La prise électrique ne doit pas être contrôlée par un interrupteur mural. Les appels ne pourront pas être effectués du combiné sans fil si le socle est débranché ou mis hors tension ou si le courant est coupé.
- Possibilité d'interférences aux téléviseurs: Certains téléphones sans fil fonctionnent sur des fréquences pouvant causer des interférences aux téléviseurs et aux magnétoscopes. Pour éviter de telles interférences, ne placez pas le socle du téléphone sans fil près ou sur un téléviseur ou un magnétoscope. S'il y a présence de parasites, il est conseillé d'éloigner le téléphone sans fil du téléviseur ou du magnétoscope afin de réduire possiblement les interférences.
- Piles rechargeables: Manipulez les piles avec soin afin de ne pas les court-circuiter avec des bagues, bracelets ou clés. Les piles ou le conducteur peut surchauffer et causer des blessures. Respectez la polarité adéquate entre la pile et le chargeur.
- Les bloc-piles rechargeables à l'hydruure métallique de nickel: Jetez ces bloc-piles de manière écologique et sécuritaire. Ne les incinérerez pas et ne les perdez pas. Tel que les autres piles de ce type, elles pourraient dégager une matière toxique qui peut causer des blessures corporelles si elles sont brûlées ou percées.

**The RBRC seal**
The RBRC seal on the nickel-metal hydride battery indicates that VTech Communications, Inc. is voluntarily participating in an industry program to collect and recycle these batteries at the end of their useful lives, when taken out of service within the United States and Canada.
The program provides a convenient alternative to placing used nickel-metal hydride batteries into the trash or municipal waste, which may be illegal in your area.
VTech's participation makes it easy for you to drop off the spent battery at local retailers participating in the program or at authorized VTech product service centers. Please call **1 (800) 8 BATTERY®** for information on Ni-MH battery recycling and disposal bans/restrictions in your area.
VTech's involvement in this program is part of its commitment to protecting our environment and conserving natural resources.

**The RBRC seal and 1 (800) 8 BATTERY® are registered trademarks of Call2recycle, Inc.**

**FCC, ACTA and IC regulations**
**FCC Part 15**
This equipment has been tested and found to comply with the requirements for a Class B digital device under Part 15 of the Federal Communications Commission (FCC) rules. These requirements are intended to provide reasonable protection against harmful interference in a residential installation. This equipment generates, uses and can radiate radio frequency energy and, if not installed and used in accordance with the instructions, may cause harmful interference to radio communications. However, there is no guarantee that interference will not occur in a particular installation. If this equipment does cause harmful interference to radio or television reception, which can be determined by turning the equipment off and on, the user is encouraged to try to correct the interference by one or more of the following measures:
• Reorient or relocate the receiving antenna.
• Increase the separation between the equipment and receiver.
• Connect the equipment into an outlet on a circuit different from that to which the receiver is connected.
• Consult the dealer or an experienced radio/TV technician for help.
**CONSERVEZ CES INSTRUCTIONS**
• N'utilisez que la pile incluse ou l'équivalent. Pour commander une pile de recharge, visitez notre site Web au [www.vtechphones.com](http://www.vtechphones.com) ou composez le 800-595-9511.
• Au Canada, visitez le phones.[vtechcanada.com](http://vtechcanada.com) ou composez le 800-267-7377.
• Ne jetez pas la pile au feu. Vérifiez les instructions spécifiques de mise au rebut auprès des autorités locales.
• N'ouvrez pas et ne multipliez pas la pile. L'électrolyte qui s'en échapperait est corrosif et pourrait causer des brûlures ou des blessures aux yeux ou à la peau. L'électrolyte est toxique si avalé.
• Soyez prudent lorsque vous manipulez les piles afin d'éviter les courts-circuits provoqués par des matériaux conducteurs.
• Rechargez la pile incluse avec ce cet appareil, selon les instructions et les limites spécifiées dans ce guide d'utilisation.
**Simulateurs cardiaques implantés dans l'organisme**
Les simulateurs cardiaques s'applique uniquement aux téléphones numériques sans fil:
L'organisme "Wireless Technology Research, LLC (WTR); une firme de recherche indépendante, a mené une évaluation pluridisciplinaire des interférences entre les téléphones sans fil portatifs et les simulateurs cardiaques implantés dans l'organisme. Appuyée par l'Administration des aliments et drogues (FDA) des États-Unis, la firme WTR recommande aux médecins:
**Avis aux détenteurs de simulateurs cardiaques**
• Ils doivent tenir le téléphone sans fil à une distance d'au moins six pouces du simulateur cardiaque.
• Ils ne doivent PAS placer le téléphone sans fil directement sur le simulateur cardiaque, tel que dans une poche de chemise, lorsque celui-ci est en marche.
• Ils doivent utiliser le téléphone sans fil en appuyant sur l'oreille qui se trouve dans la direction opposée au stimulateur cardiaque.

- This is applicable to home calls only. All incoming cell calls will get through and ring.
- Unknown home calls without caller ID information will not have the option 2, "answer and always allow this number", and option 3, "to block this number". No number will be added to the allow list or block list for these calls.
- If you do not want to take the call, press OFF CANCEL to end the call.

### Block the caller while on a call

When you are on a home or cell call and speaking to the caller, and you do not want to continue the call, you can end the call with block announcement and add the number to the block list. During a home or cell call, press CALL BLOCK → MENU SELECT.

### Unblock a telephone number

If you have added a telephone number to the block list, you can unblock it.

- Press CALL BLOCK → **▲/▼** → **Block list** → MENU SELECT.
- Press MENU SELECT to choose **Review**, and then press **▲/▼** to browse through the block entries.
- When the desired entry displays, press MUTE DELETE on the handset. Then, press MENU SELECT to confirm.

# 7 Answering system

## About answering system and voicemail

For message recording, your telephone has a built-in answering system, and it also supports voicemail service offered by your telephone service provider (subscription is required, and fee may apply).

	Built-in answering system	Voicemail service
Supported by	Telephone system	Telephone service provider
Subscription	No	Yes
Fee	No	May apply
Answer incoming calls	<ul style="list-style-type: none"><li>After 4 rings by default.</li> <li>It can be changed in the handset or the telephone base menu.</li></ul>	<ul style="list-style-type: none"><li>Usually after 2 rings.</li> <li>It can be changed by contacting your telephone service provider.</li></ul>



<b>Storage</b>	Telephone base	Server or System
<b>Display new messages</b>	<ul style="list-style-type: none"><li>Handset - <b>XX new messages</b></li> <li>Telephone base - XX. If message alert tone is turned on, the base beeps every 10 seconds.</li></ul>	<ul style="list-style-type: none"><li>Handset - <span>MSG</span></li></ul>
<b>Retrieve messages</b>	<ul style="list-style-type: none"><li>Press <span>PLAY/STOP</span> on the base;</li> <li>Press <span>MENU SELECT</span> and then select <b>Play messages</b> on the handset; or</li> <li>Access remotely with an access code.</li></ul>	<ul style="list-style-type: none"><li>Press <span>1</span> on the handset, and enter an access number from your telephone service provider.</li></ul>

## Turn on/off built-in answering system

Handset	Base
<ol style="list-style-type: none"><li>Press <span>MENU SELECT</span> to enter the main menu in idle.</li> <li>Press <b>▲/▼</b> → <b>Answering sys</b> → <span>MENU SELECT</span>.</li> <li>Press <b>▲/▼</b> → <b>Answer on/off</b> → <span>MENU SELECT</span>.</li> <li>Press <b>On/Off</b>.</li></ol>	<p>Press <span>ANS ON</span> (base).</p>

## Announcement recording

Handset	Handset screen
<ol style="list-style-type: none"><li>Press <span>MENU SELECT</span> to enter the main menu in idle.</li> <li>Press <b>▲/▼</b> → <b>Answering sys</b> → <span>MENU SELECT</span>.</li> <li>Press <b>▲/▼</b> → <b>Ans sys setup</b> → <span>MENU SELECT</span>.</li> <li>Press <b>▲/▼</b> → <b># of rings</b> → <span>MENU SELECT</span>.</li> <li>Press <b>▲/▼</b> to scroll to desired number of rings → <span>MENU SELECT</span>.</li></ol>	<p>Play Del Rec</p> <p>[2] [3] [7]</p> <p>To delete the recorded announcement, press 3.</p> <p>Press 7 to record your announcement.</p> <p>The voice guide announces <i>"Record after the tone, press 5 when you are done"</i> while the screen displays Recording... Stop [5].</p>

Technical Specifications	
Frequency control	Crystal controlled PLL synthesizer
Transmit frequency	Handset: 192L536-1928.448 MHz   Telephone base: 192L536-1928.448 MHz
Channels	DECT channel: 5
Nominal effective range	Maximum power allowed by FCC and IC. Actual operating range may vary according to environmental conditions at the time of use.
Power requirement	Handset: 2.4 V DC, 400mAh, Ni-MH battery   Base: 6V DC @ 450mA <p>Power adapter: Output 6V DC @ 450mA (Base), Max. of PS1 or LPS.   Output: 6V@400mA (Charger). Max. of PS1 or LPS.</p>
 	
Memory	Phonebook: 1000 memory locations; up to 30 digits and 15 characters <p>Caller ID log: 50 memory locations; up to 24 digits and 15 characters</p> <p>Call block: 1000 entries</p>

The Bluetooth® word mark and logos are owned by Bluetooth SIG, Inc. and any use of such marks by VTech Holdings Limited is under license.
VTech Holdings Limited is a member of Bluetooth SIG, Inc. Other trademarks and trade names are those of their respective owners.
\* Includes licensed Galateli™ technology. Galateli™ is a trademark of Truecall Group Limited.

The ENERGY STAR® program (www.energystar.gov) recognizes and encourages the use of products that save energy and help protect our environment. We are proud to mark this product with the ENERGY STAR® label indicating it meets the latest energy efficiency guidelines.

ENERGY STAR

The Ringer Equivalence Number (REN) for this terminal equipment is 1.0. The REN is an indication of the maximum number of devices allowed to be connected to a telephone interface. The termination on an interface may consist of any combination of devices subject only to the requirement that the sum of the RENs of all the devices does not exceed five. This product meets the applicable Innovation, Science and Economic Development Canada technical specifications.

**California Energy Commission Battery charging testing instructions**
This telephone is set up to comply with the energy-conserving standards right out of the box. These instructions are intended for California Energy Commission (CEC) compliance testing only. When the CEC battery charging testing mode is activated, all telephone functions, except battery charging, will be disabled.

#### To activate the CEC battery charging testing mode:

- Unplug the telephone base power adapter from the power outlet. Make sure all handsets are plugged with charged batteries before proceeding.
- While you **press and hold** FIND HS, plug the telephone base power adapter back to the power outlet.
- After about 20 seconds, when the HOME/FLASH light starts flashing, release FIND HS and then press it again within two seconds. You hear a confirmation tone. The HOME/FLASH light turns on and all handsets display **To register HS...** see manual alternately. Allow up to one minute for the process to complete.

If the phone fails to enter this mode, repeat all the steps mentioned above. The telephone base will be powered up as normal if you fail to press FIND HS within two seconds in Step 3.

#### To deactivate the CEC battery charging testing mode:

- Unplug the telephone base power adapter from the power outlet, and then plug it back in. Then the telephone base is powered up as normal.
- Put the handsets on the telephone base cradle to begin registration.
- The handset shows **Registering...** If the registration is successful, the handset screen displays **Registered** and beeps. The handset is registered with the telephone base.

## Message alert tone

- Press MENU SELECT to enter the main menu in idle.
- Press **▲/▼** → **Answering sys** → MENU SELECT.
- Press **▲/▼** → **Ans sys setup** → MENU SELECT.
- Press **▲/▼** → **Msg alert tone** → MENU SELECT.
- Press **▲/▼** to select **On** or **Off**.

## Message playback

Handset	Base
Press <span>MENU SELECT</span> twice to select <b>Play messages</b> .	Press <span>PLAY/STOP</span> (base).

## Options during message playback

Skip a message	Repeat the playing message	Play the previous message
Press <b>6</b> (Handset) or <span>SKP</span> (base).	Press <b>4</b> (Handset) or <span>REPEAT</span> (base).	Press <b>4</b> twice (Handset) or <span>REPEAT</span> twice (base).

## Set number of rings

You can set your answering system to answer calls at least two rings earlier than your voicemail service. For example, if your voicemail service answers after six rings, set your answering system to answer after four rings. In case you are on a call, or if the answering system is busy recording a message and you receive another call, the second caller can leave a voicemail message.

- Press MENU SELECT to enter the main menu in idle.
- Press **▲/▼** → **Answering sys** → MENU SELECT.
- Press **▲/▼** → **Ans sys setup** → MENU SELECT.
- Press **▲/▼** → **# of rings** → MENU SELECT.
- Press **▲/▼** to scroll to desired number of rings → MENU SELECT.

## Delete all messages

- Press MENU SELECT to enter the main menu in idle.
- Press **▲/▼** → **Answering sys** → MENU SELECT.
- Press **▲/▼** → **Delete all old** → MENU SELECT.

- protective elements, for example, failing to properly close a seal), or such protective elements are damaged or missing (e.g. a cracked battery door), or subjecting a Product to conditions beyond its stated specifications or limits (e.g. 30 minutes in a freezer or fresh water).
- Product that has been damaged due to repair, alteration or modification by anyone other than an authorized service representative of VTech;
- Product to the extent that the problem experienced is caused by signal conditions, network reliability, or cable or antenna systems;
- Product returned without a valid proof of purchase (see Item 2 below); or
- Charges for installation or set up, adjustment of customer controls, and installation or repair of systems outside the unit.

#### How do you get warranty service?

To obtain warranty service in the USA, please visit our website at [www.vtechphones.com](http://www.vtechphones.com) or call 1 (800) 595-9511.

To obtain warranty service in Canada, go to [phones.vtechcanada.com](http://phones.vtechcanada.com) or dial 1 (800) 267-7377.

**NOTE:** Before calling for service, please review the user's manual - a check of the Product's controls and features may save you a service call.

Except as provided by applicable law, you assume the risk of loss or damage during transit and transportation and are responsible for delivery or handling charges incurred in the transport of the Product(s) to the service location. VTech will return replaced Product under this limited warranty. Transportation, delivery or handling charges are prepaid. VTech assumes no risk for damage or loss of the Product in transit. If the Product failure is not covered by this limited warranty, or proof of purchase does not meet the terms of this limited warranty, VTech will notify you and will request that you authorize the cost of replacement prior to any further replacement activity. You must pay for the cost of replacement and return shipping costs for the replacement of Products that are not covered by this limited warranty.

#### What must you return with the Product to get warranty service?

- Return the entire original package and contents including the Product to the VTech service location along with a description of the malfunction or difficulty; and
- Include a "valid proof of purchase" (sales receipt) identifying the Product purchased (Product model) and the date of purchase or receipt; and
- Provide your name, complete and correct mailing address, and telephone number.

#### Other limitations

This warranty is the complete and exclusive agreement between you and VTech. It supersedes all other written or oral communications related to this Product. VTech provides no other warranties for this Product. The warranty exclusively describes all of VTech's responsibilities regarding the Product. There are no other express warranties. No one is authorized to make modifications to this limited warranty and you should not rely on any such modification. State/Provincial Law Rights: This warranty gives you specific legal rights, and you may also have other rights, which vary from state to state or province to province. Limitations: Implied warranties, including those of fitness for a particular purpose and merchantability (an unwritten warranty that the Product is fit for ordinary use) are limited to one year from the date of purchase. Some states/provinces do not allow limitations on how long an implied warranty lasts, so the above limitation may not apply to you. In no event shall VTech be liable for any indirect, special, incidental, consequential, or similar damages (including, but not limited to lost profits or revenue, inability to use the Product or other associated equipment, the cost of substitute equipment, and claims by third parties) resulting from the use of this Product. Some states' provinces do not allow the exclusion or limitation of incidental or consequential damages, so the above limitation or exclusion may not apply to you.

#### Please retain your original sales receipt as proof of purchase.

**Disclaimer and Limitation of Liability**
VTech Communications, Inc. and its suppliers assume no responsibility for any damage or loss resulting from the use of this user's manual. VTech Communications, Inc. and its suppliers assume no responsibility for any loss or claims by third parties that may be brought through the use of this product.

**Company:** VTech Communications, Inc.
Address: 9020 SW Washington Square Road - Ste 555
Tigard, OR 97223, United States