

Go to www.vtechphones.com to register your product for enhanced warranty support and the latest VTech product news.

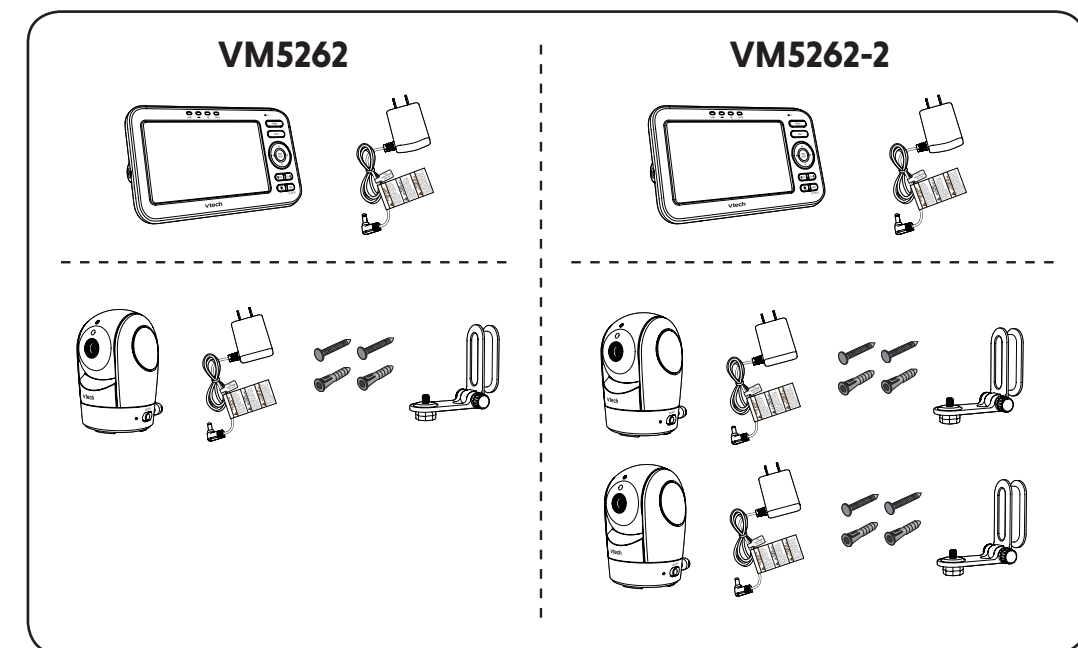


Quick start guide



VM5262
VM5262-2
Pan and Tilt Video Monitor

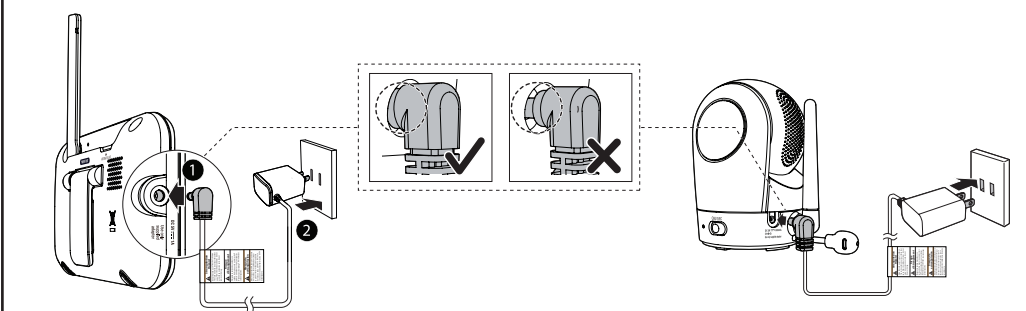
WHAT'S IN THE BOX



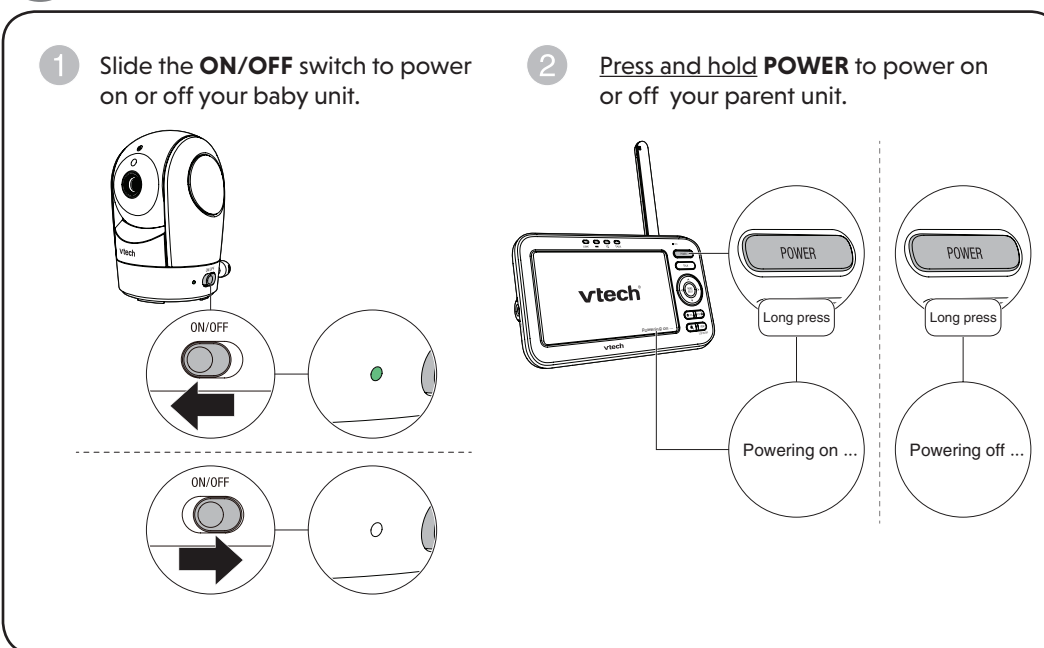
1 CONNECT THE BABY MONITOR

NOTES

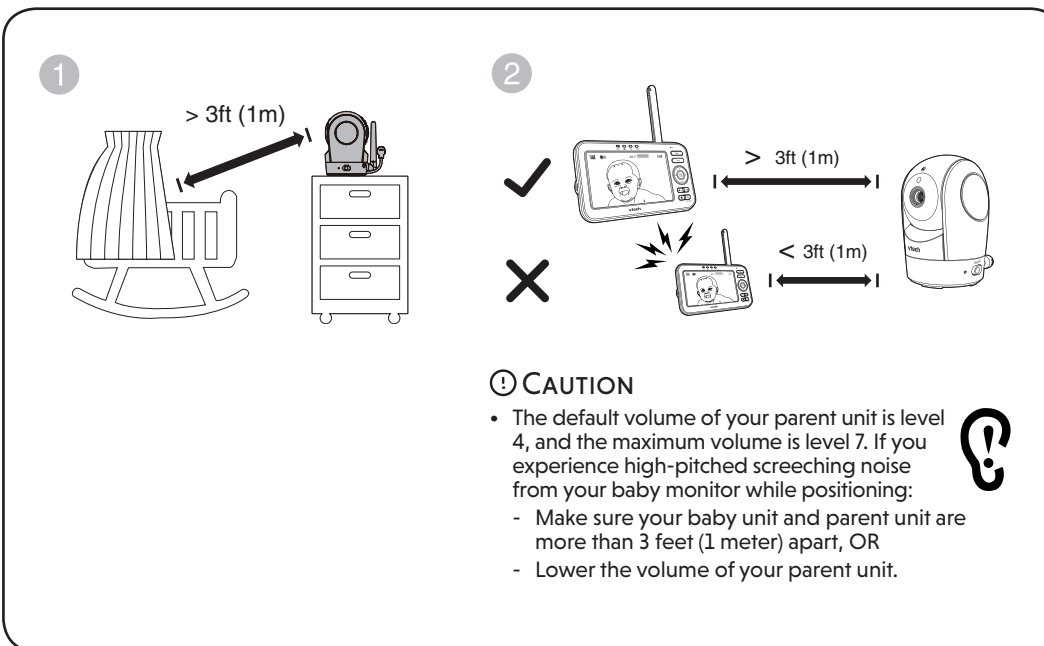
- Use only the power adapters supplied with this product.
- Make sure the baby monitor is not connected to the switch controlled electric outlet.
- Connect the power adapters in a vertical or floor mount position only. The adapters' prongs are not designed to hold the weight of baby monitor, so do not connect them to any ceiling, under-the-table, or cabinet outlets. Otherwise, the adapters may not properly connect to the outlets.
- Make sure the parent unit, the baby units and the power adapter cords are out of reach of children.



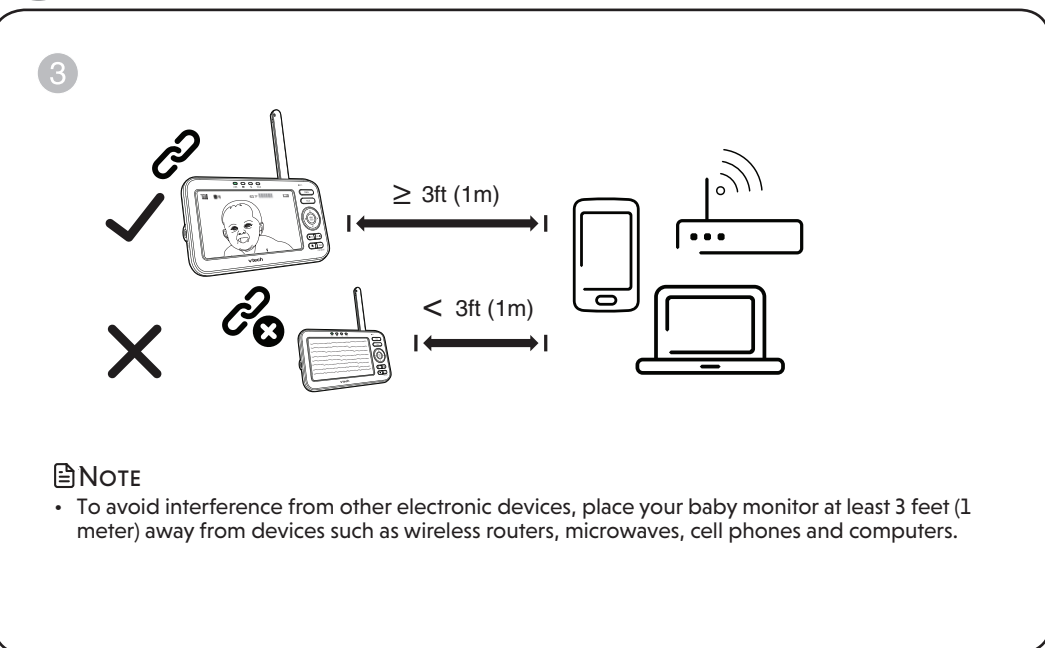
2 POWER ON OR OFF THE BABY MONITOR



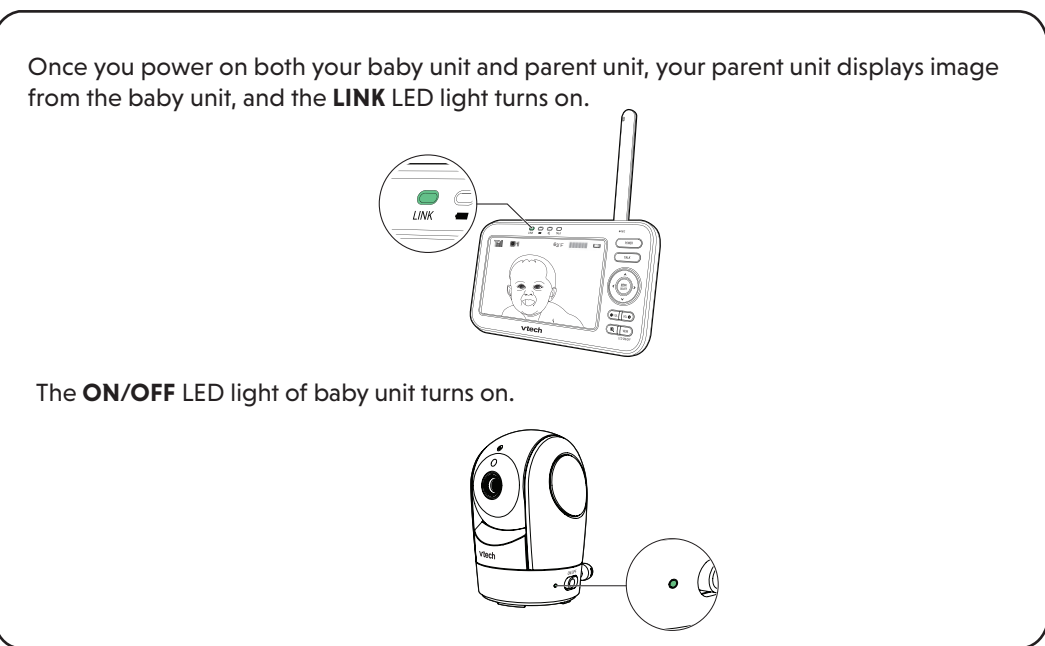
3 POSITIONING THE BABY MONITOR



3 POSITIONING THE BABY MONITOR (CON'T)



4 STATUS CHECK

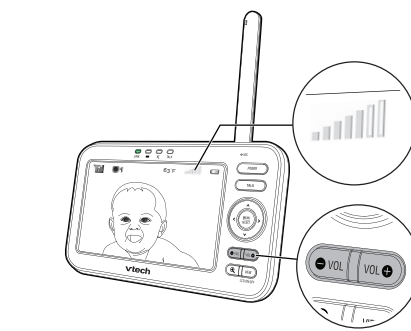


BASIC OPERATION - PARENT UNIT

Adjust speaker volume

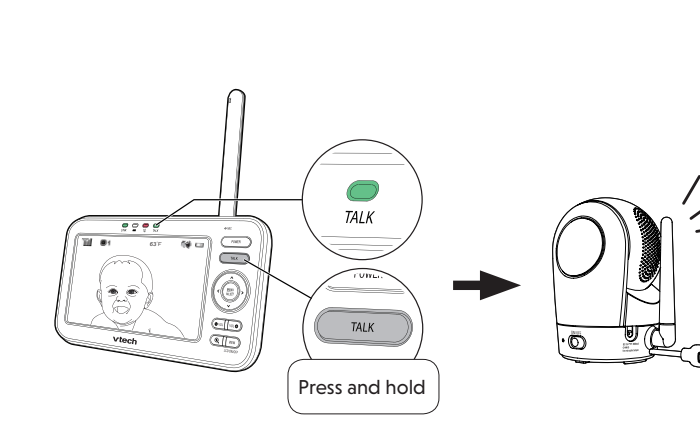
Press **VOL** / **VOL** to adjust your parent unit speaker volume.

The sound sensitivity setting also affects the speaker volume. For details, refer to **Sound sensitivity and sound activation**.



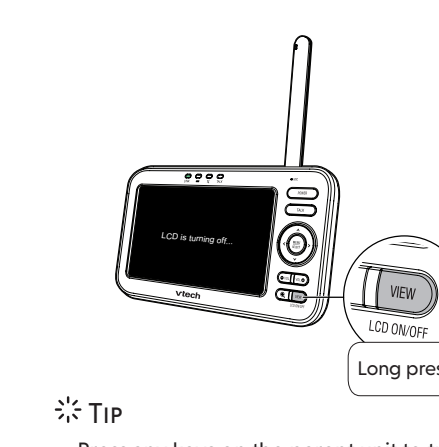
Talk to your baby unit

Press and hold **TALK** and speak to your parent unit. Your voice is transmitted to the baby unit.



Turn off the screen

Press and hold **LCD ON/OFF** to switch off the screen. You can still hear sound from the baby unit.

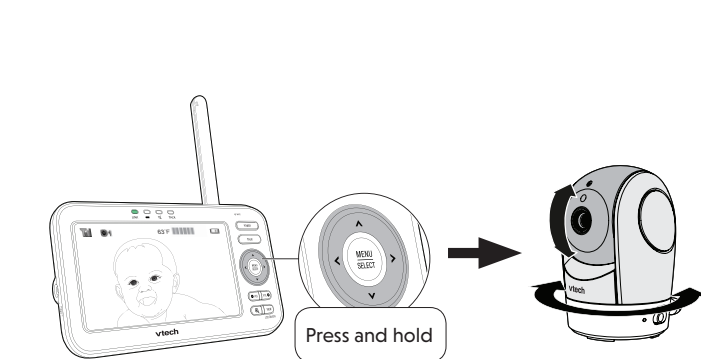


TIP

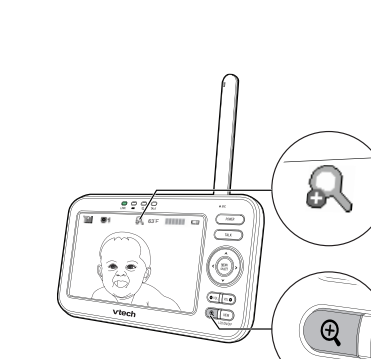
- Press any keys on the parent unit to turn on the screen again.

Pan, tilt, zoom

Press and hold **▲**, **▼**, **◀** or **▶** to pan or tilt the camera upward, downward, leftward or rightward.



Press **Q** to zoom in or out.

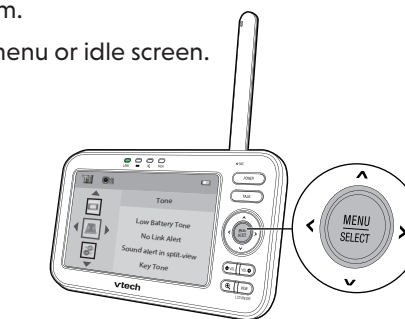


Use the menu

Press **MENU** / **SELECT** to enter the menu, choose a menu item, or save a setting. You can use the parent unit for advanced settings or operations, such as to play or stop the baby unit lullaby, or to adjust the baby unit sound sensitivity.

While in the menu:

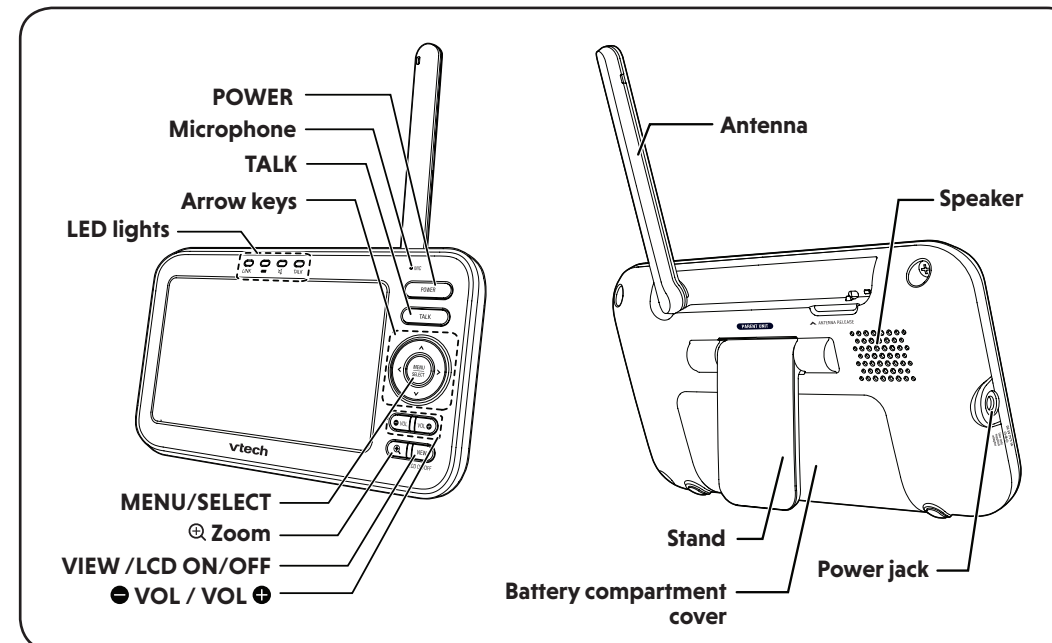
- Press **▲** or **▼** to scroll among the menu options.
- Press **MENU** / **SELECT** or **▶** to select an item.
- Press **◀** to return to the main menu or idle screen.



Document order number: 96-012346-020-100
11/18 VM5262-2_QSG_V2
© 2018 VTech Communications, Inc. All rights reserved.
Specifications are subject to change without notice.



OVERVIEW - PARENT UNIT



SOUND SENSITIVITY AND SOUND ACTIVATION

Adjust sound detection sensitivity
With sound sensitivity setting, you can choose to hear sounds from the baby unit all the time, or to hear sounds that exceed a certain level.

Parent unit setting	What happens...	You may experience...	What you could do...
Speaker volume: LOW	Hear all sounds all the time, including background sounds.	Difficulty in hearing your baby's soft sounds if the background sounds are louder.	<ul style="list-style-type: none"> Increase parent unit's speaker volume, and lower sound sensitivity. If you are using a white noise machine or sound machine, set its volume to low, or relocate it to minimize background sounds.
Sensitivity: Highest [Default]			
Speaker volume: MAX	Only hear sounds that exceed the selected sound sensitivity level.	No sound; or sounds that cut in and out at times as the baby unit may not detect extra soft sounds.	Increase the sound sensitivity, and adjust the volume level if necessary.
Sensitivity: Low / Medium			

Sound activated screen
When sound activation is on, the parent unit screen stays off to save power when the baby unit detects no sound.

Once the baby unit detects sounds that are louder than the chosen sound sensitivity level, the parent unit screen turns on automatically. It will then turn off again after 50 seconds of no sound detection.

For details, please see **Adjust the sound sensitivity of the baby unit** in the User's manual.

MOUNT THE BABY UNIT (OPTIONAL)

NOTE

- The types of screws and anchors you need depend on the composition of the wall.

- Align the wall mount bracket and screws with the holes in the wall as shown.
- Insert the screws into the holes and tighten the screws until only 1/4 inch of the screws are exposed.
- Place the baby unit on the wall mount bracket. Tighten the screw into the threaded socket at the bottom to secure the baby unit.
- You can maximize your baby unit's viewing angles by tilting the wall mount bracket. Hold the baby unit, and then rotate the knob in anticlockwise direction. This will loosen the joint of the wall mount bracket. Tilt your baby unit up or down to adjust to your preferred angle. Then, rotate the knob in clockwise direction to tighten the joint and secure the angle.

NOTE

- Check for reception strength and camera angle before drilling the holes.

Place the wall mount bracket on a wall and then use a pencil to mark the top and the bottom holes as shown. Remove the wall mount bracket and drill two holes in the wall (7/32 inch drill bit).

If you drill the holes into a stud, go to step 3.

-OR-

If you drill the holes into an object other than a stud, insert the wall anchors into the holes. Tap gently on the ends with a hammer until the wall anchors are flush with the wall.

FOR VM5262-2 ONLY

Status check - Two baby units
If you are viewing baby unit ①, the **ON/OFF** LED light of baby unit ① turns on. As baby unit ② is not being viewed, its **ON/OFF** LED light flashes.

Change different views - Single CAM
In **Single CAM** or **Patrol** mode, press **VIEW** to switch between the image of baby units ① and ②.

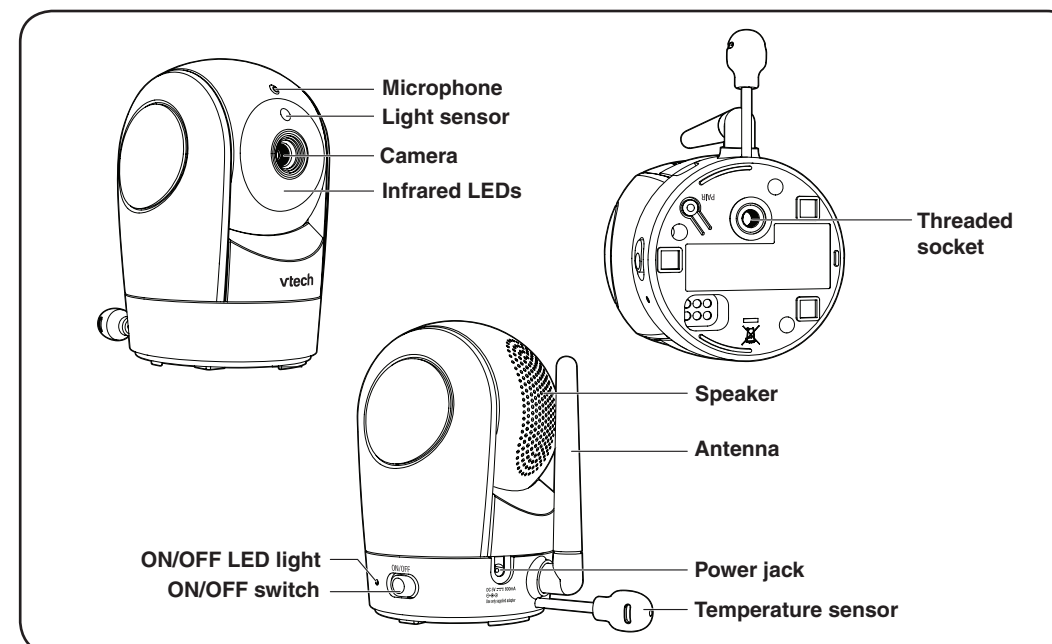
Change different views - Patrol
Select **Patrol** as your monitoring mode to alternately view the image from baby units ① and ② every 10 seconds.

Change different views - Split
Select **Split** as your monitoring mode to view the images from both baby units at once.

NOTE

- If you power on only one baby unit, you may see the parent unit displaying and then . Press **VIEW** in **Single CAM** or **Patrol** mode to switch to the baby unit you have powered on.

OVERVIEW - BABY UNIT



DIM MODE

With dim mode preset to on, your parent unit display will dim to conserve energy after 10 minutes of inactivity, in which there is neither key pressed nor alert received from the baby unit.

NOTE

- If you do not want LCD to dim automatically, turn off the **Dim Mode**.

NIGHT VISION

The baby unit has infrared LEDs that allow you to see your baby clearly at night or in a dark room. When the baby unit being viewed detects low light levels, the infrared LEDs are switched on automatically. The images from the baby unit are in black and white, and appears on the screen.

NOTES

- It is normal if you see a short white glare on your parent unit screen as the baby unit is adapting to the dark environment.
- When the infrared LEDs are on, the images are in black and white. This is normal.

TIP

- Depending on the surroundings and other interfering factors, like lightings, objects, colors and backgrounds, the video quality may vary. Adjust the baby unit's angle or place the baby unit at a higher level to prevent glare and blurry display.