

Go to www.vtechphones.com to register your product for enhanced warranty support and the latest VTech product news.

vtech

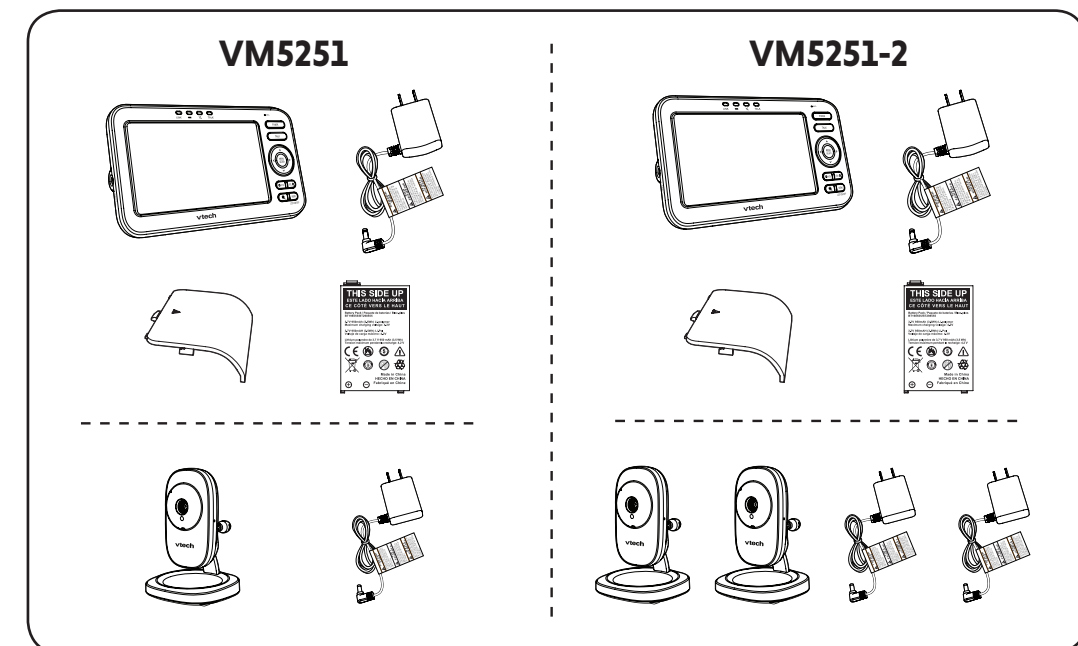
Quick start guide



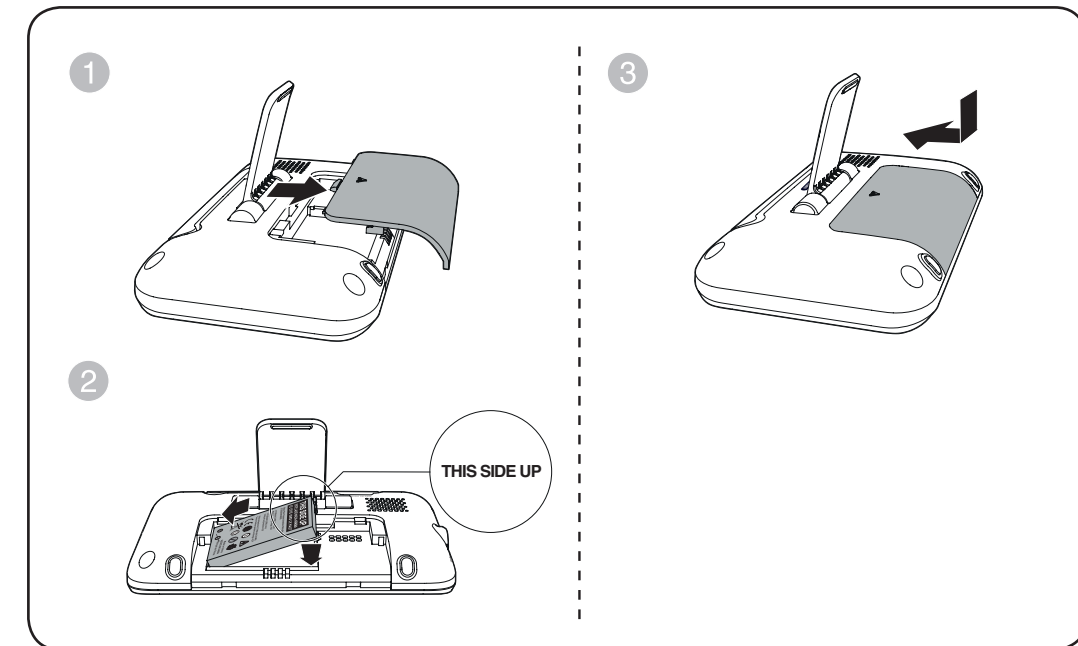
VM5251
VM5251-2
Full Color Video Monitor

Document order number: 96-011941-050-100
© 2018 VTech Communications, Inc. All rights reserved.
Specifications are subject to change without notice.

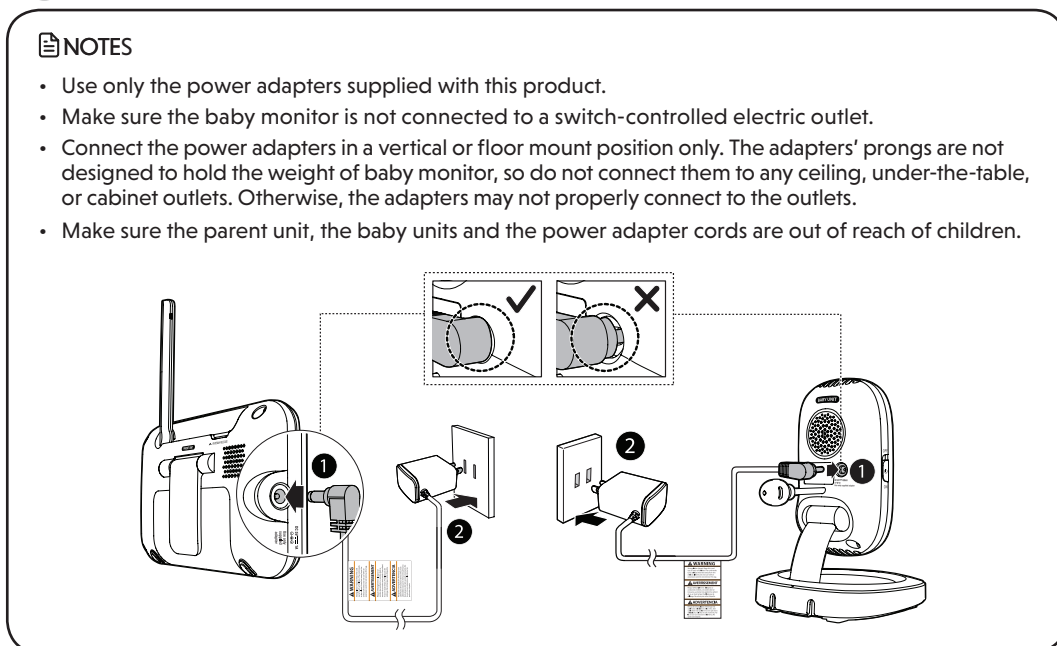
WHAT'S IN THE BOX



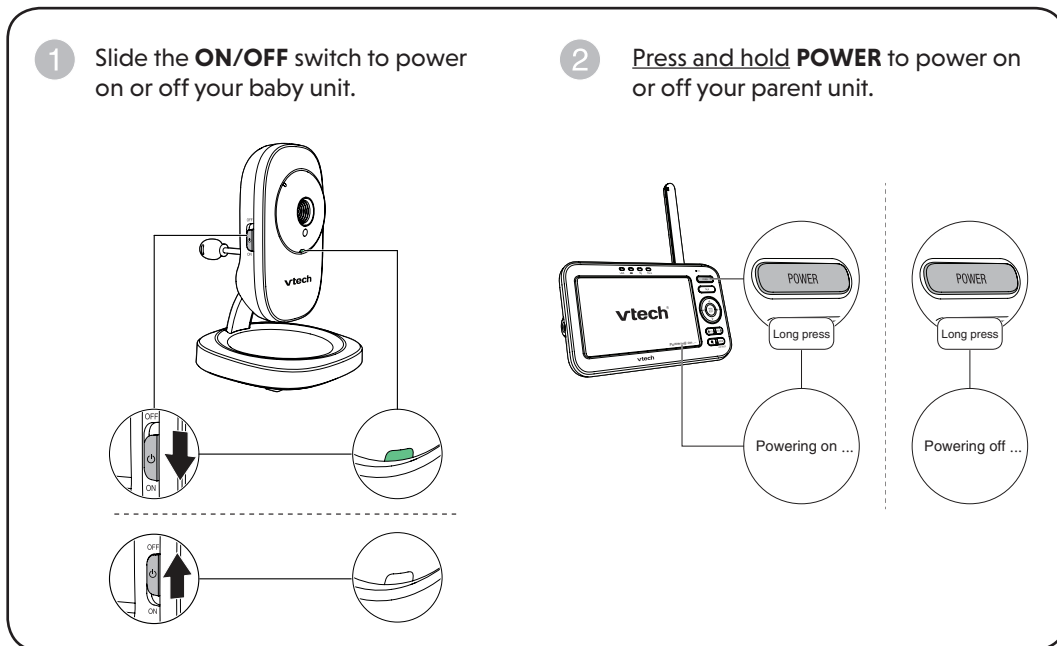
1 INSTALL THE BATTERY



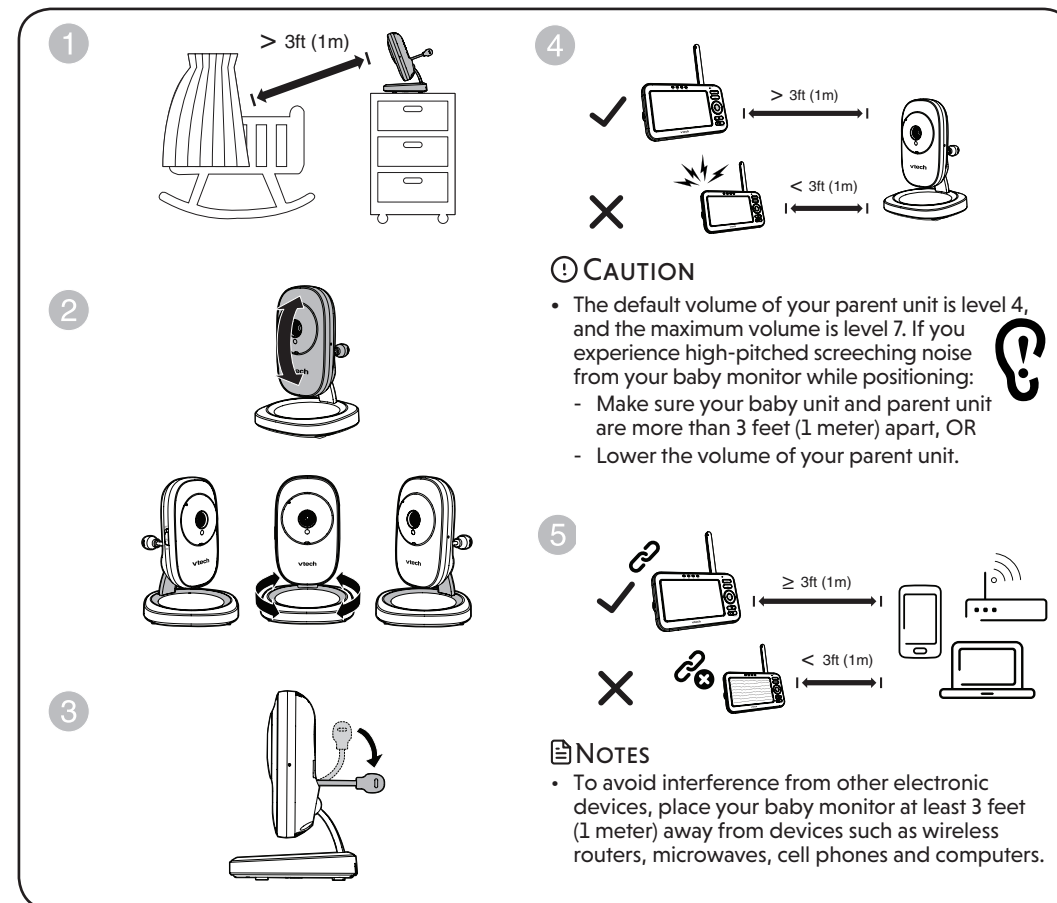
2 CONNECT THE BABY MONITOR



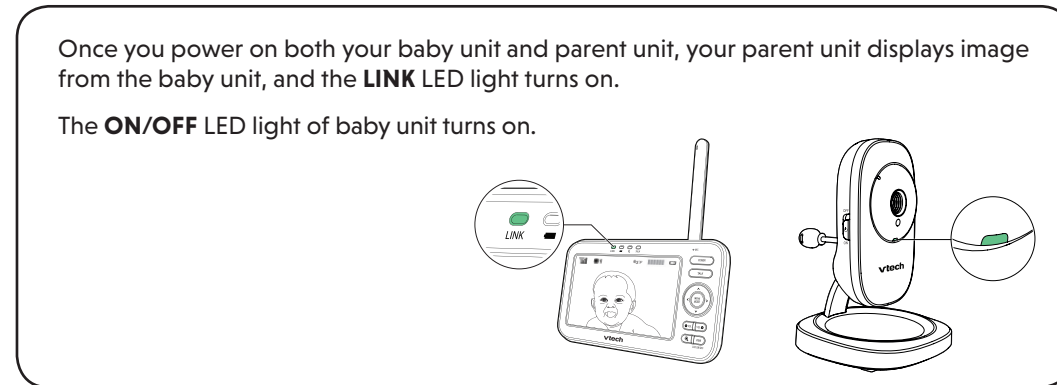
3 POWER ON OR OFF THE BABY MONITOR



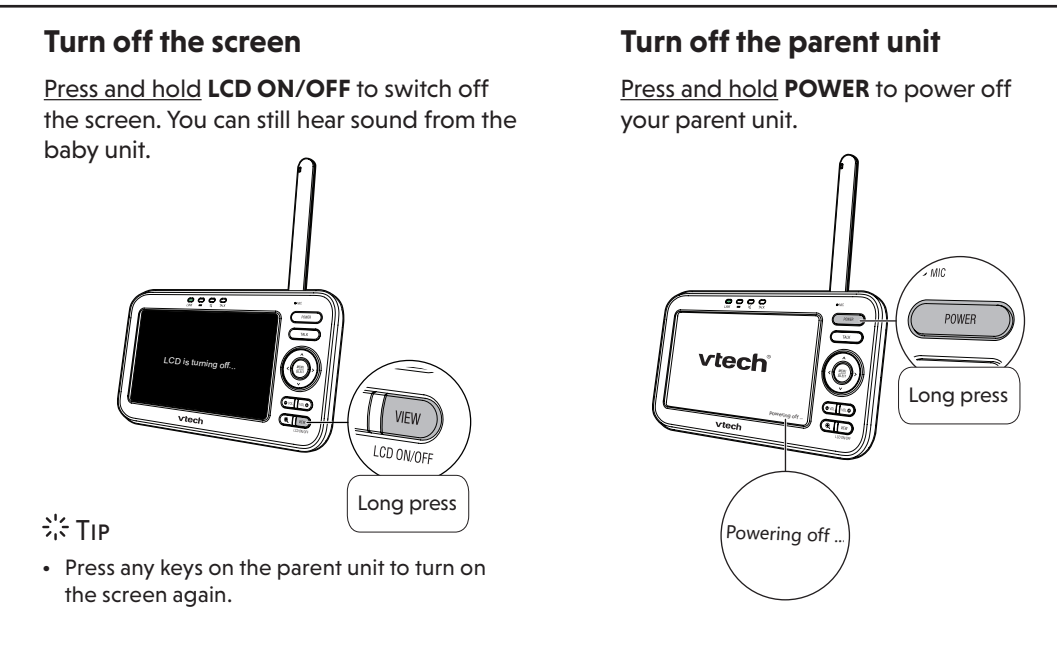
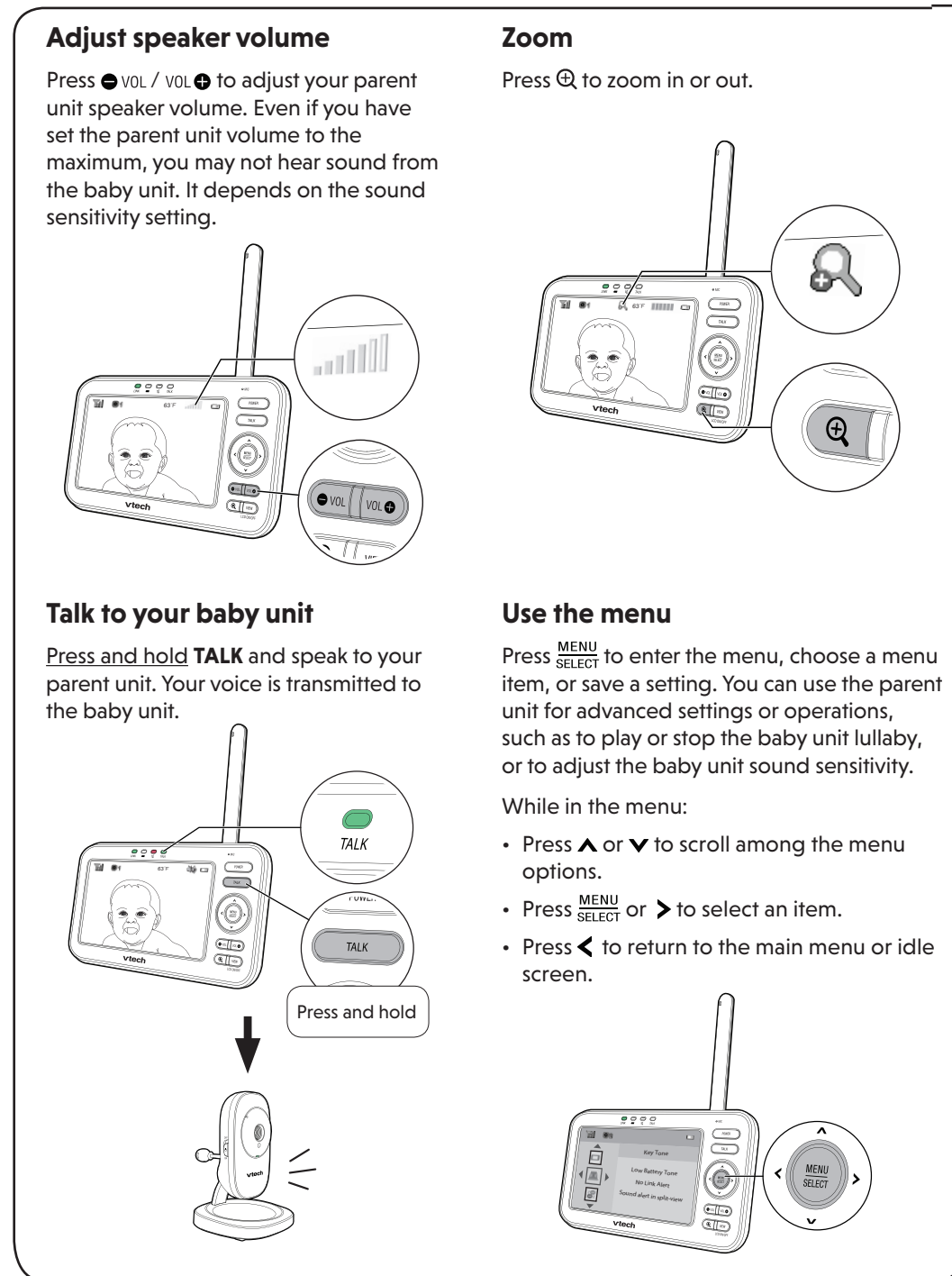
4 POSITIONING THE BABY MONITOR



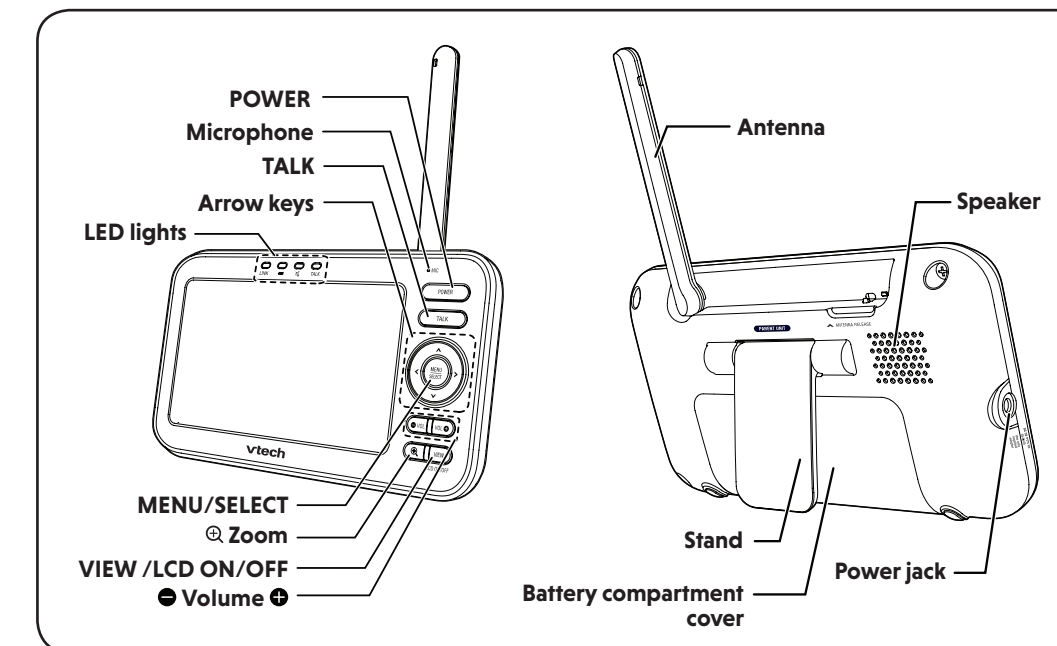
5 STATUS CHECK



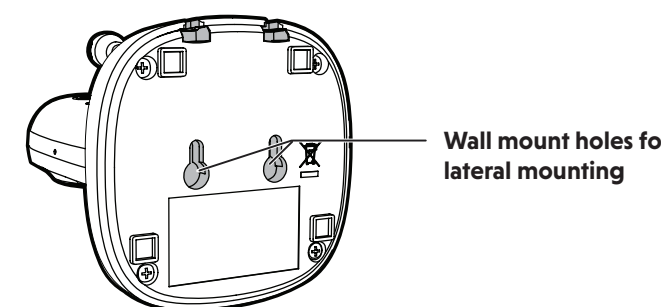
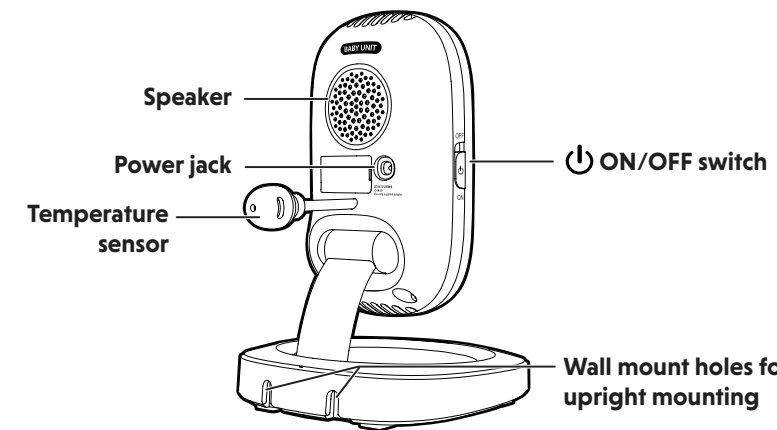
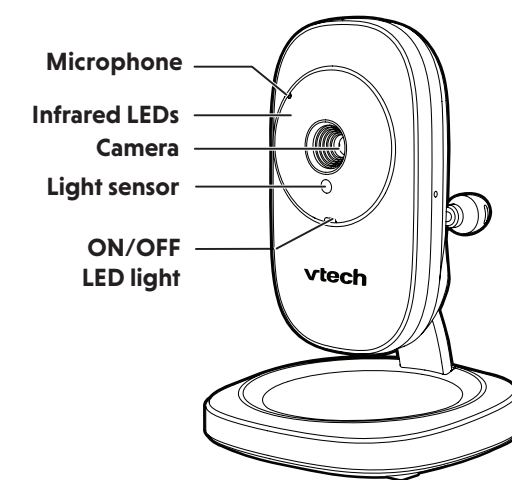
BASIC OPERATION - PARENT UNIT



OVERVIEW - PARENT UNIT



OVERVIEW - BABY UNIT



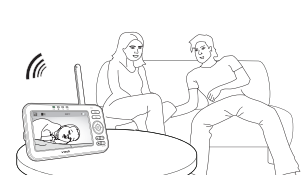
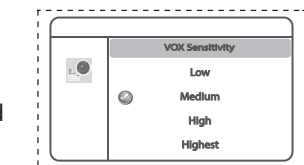
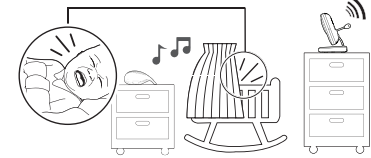
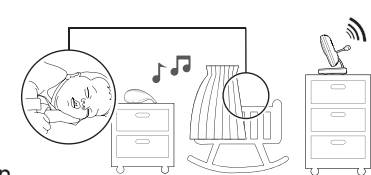
SOUND SENSITIVITY AND SOUND ACTIVATION

Sound sensitivity

With sound sensitivity setting, you can choose to hear sounds from the baby unit all the time, or to hear sounds that exceed a certain level. The default level **Highest** allows you to hear all sounds (including background noises).

If you set the sound sensitivity to a lower level (e.g. **Medium**), you will only hear sounds that exceed the selected level. The baby unit may not detect soft sounds, and the parent unit speaker may remain quiet.

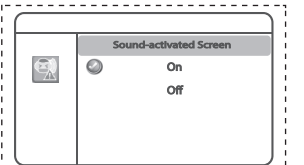
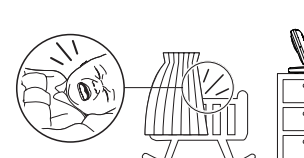
For details, please see **Adjust the sound sensitivity of the baby unit** in the User's manual.



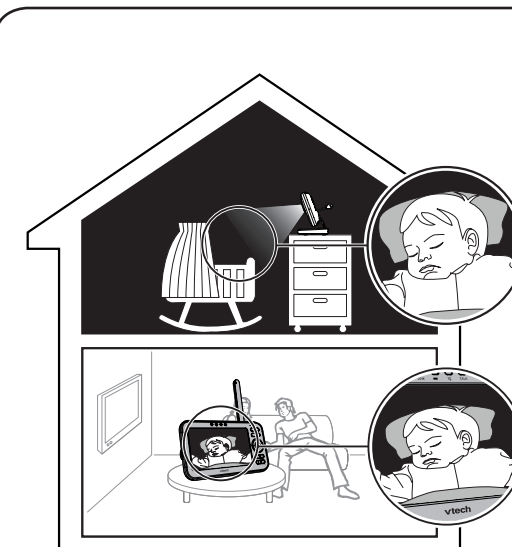
Sound activation

When sound activation is on, the parent unit screen stays off to save power when the baby unit detects no sound.

Once the baby unit detects sounds that are louder than the chosen sound sensitivity level, the parent unit screen turns on automatically. It will then turn off again after 50 seconds of no sound detection.



NIGHT VISION



The baby unit has infrared LEDs that allow you to see your baby clearly at night or in a dark room. When the baby unit being viewed detects low light levels, the infrared LEDs are switched on automatically. The images from the baby unit are in black and white, and appears on the screen.

NOTES

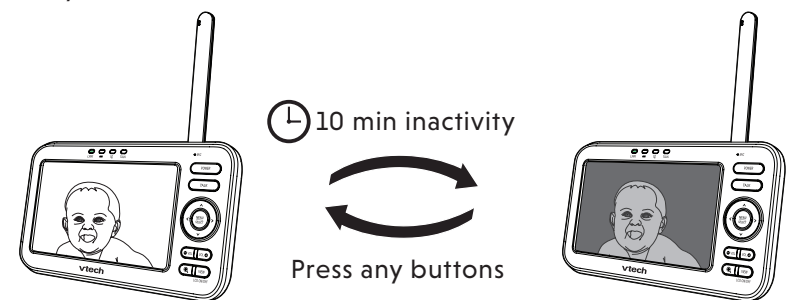
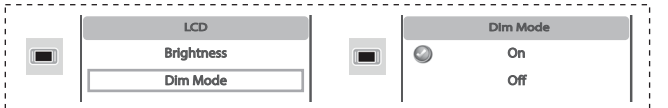
- It is normal if you see a short white glare on your parent unit screen as the baby unit is adapting to the dark environment.
- When the infrared LEDs are on, the images are in black and white. This is normal.

TIP

- Depending on the surroundings and other interfering factors, like lightings, objects, colors and backgrounds, the video quality may vary. Adjust the baby unit's angle or place the baby unit at a higher level to prevent glare and blurry display.

DIM MODE

With dim mode preset to on, your parent unit display will dim to conserve energy after 10 minutes of inactivity, in which there is neither key pressed nor alert received from the baby unit.



NOTE

- If you do not want LCD to dim automatically, turn off the **Dim Mode**.

MOUNT THE BABY UNIT ON DRY WALL (OPTIONAL)

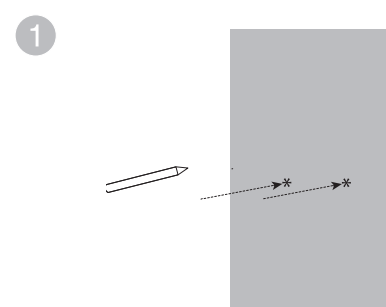
Items to purchase

You will need to purchase the following items separately to mount your baby unit:

- 2 screws
- 2 anchors

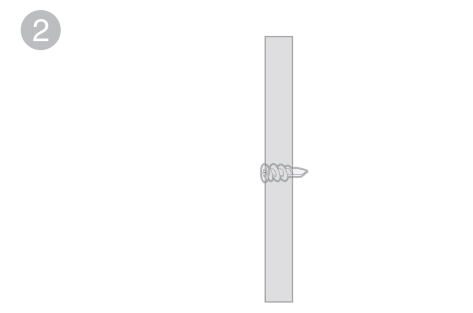
NOTE

- The types of screws and anchors you need depend on the composition of the wall.



NOTE

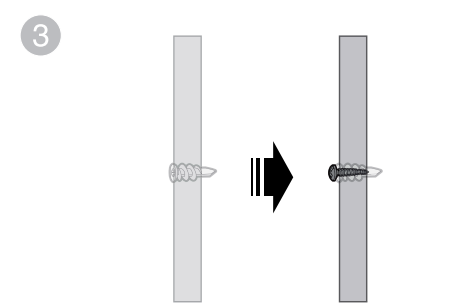
- Check for reception strength and camera angle before drilling the holes.
- Use a pencil to mark two holes in parallel. Make sure they are the same distance apart as the wall mount holes on the baby unit.



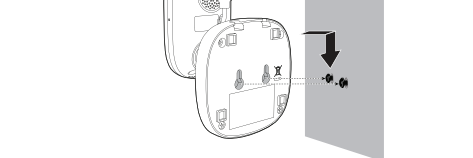
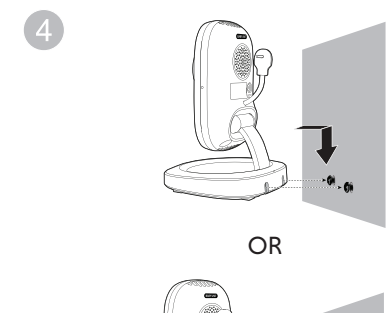
Drill two holes in the wall. If you drill the holes into a stud, go to step 3.

-OR-

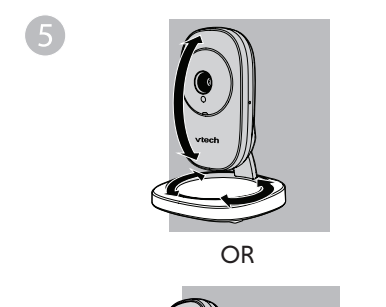
If you drill the holes into an object other than a stud, insert the wall anchors into the holes. Tap gently on the ends with a hammer until the wall anchors are flush with the wall.



Insert the screws into the holes and tighten the screws until only 1/4 inch of the screws are exposed.



Depending on your preference, choose the upright or lateral orientation to mount your unit. Align the wall mount holes at the bottom or at the rear side of the baby unit with the screws on the wall. Slide the baby unit down until it locks into place.

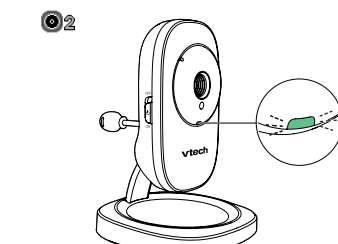
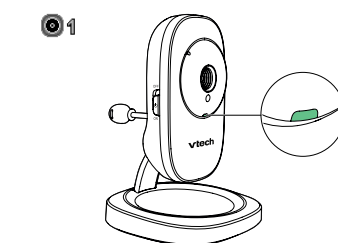


Tilt or rotate to adjust camera angle.

FOR VM5251-2 ONLY

Status check - Two baby units

If you are viewing baby unit ①, the **POWER** LED light of baby unit ① turns on. As baby unit ② is not being viewed, its **POWER** LED light flashes.

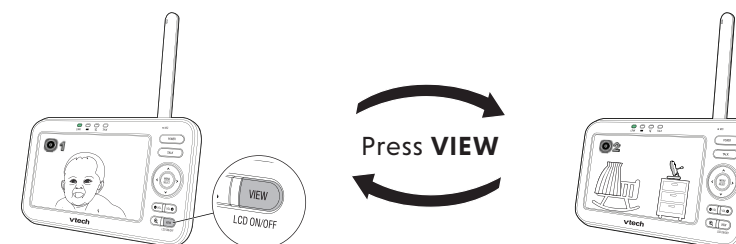


NOTE

- If you power on only one baby unit, you may see the parent unit displaying and then **No link to CAM #** (# represents the baby unit number), and the **LINK** LED light flashing. Press **VIEW** in **Single CAM** or **Patrol** mode to switch to the baby unit you have powered on.

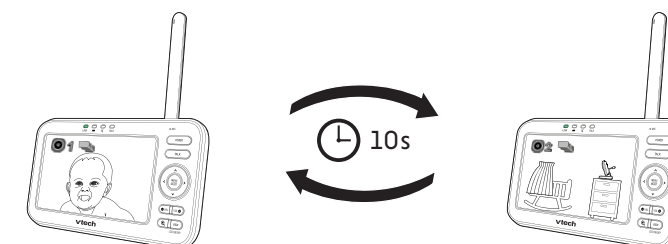
Change different views - Single CAM

In **Single CAM** or **Patrol** mode, press **VIEW** to switch between the image of baby units ① and ②.



Change different views - Patrol

Select **Patrol** as your monitoring mode to alternately view the image from baby units ① and ② every 10 seconds.



Change different views - Split

Select **Split** as your monitoring mode to view the images from both baby units at once.

