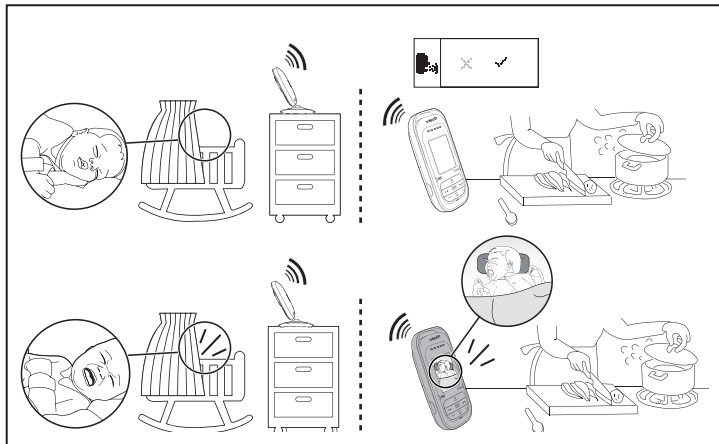
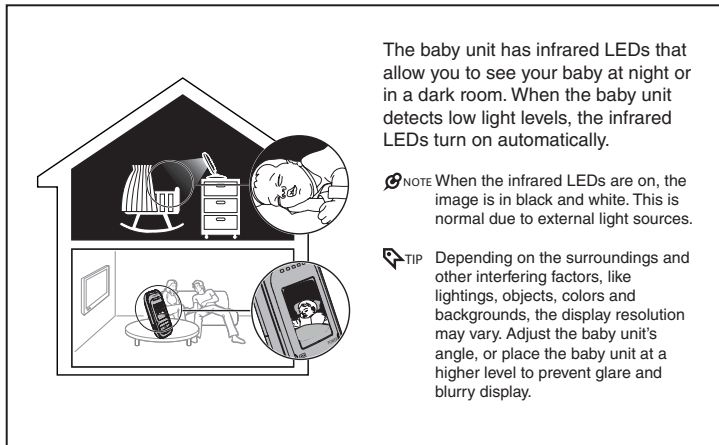




## Sound activation



## Night vision



The baby unit has infrared LEDs that allow you to see your baby at night or in a dark room. When the baby unit detects low light levels, the infrared LEDs turn on automatically.

**NOTE** When the infrared LEDs are on, the image is in black and white. This is normal due to external light sources.

**TIP** Depending on the surroundings and other interfering factors, like lightings, objects, colors and backgrounds, the display resolution may vary. Adjust the baby unit's angle, or place the baby unit at a higher level to prevent glare and blurry display.

Go to [www.vtechphones.com](http://www.vtechphones.com) to register your product for enhanced warranty support and latest VTech product news.

VM511  
VM511-2  
VM501

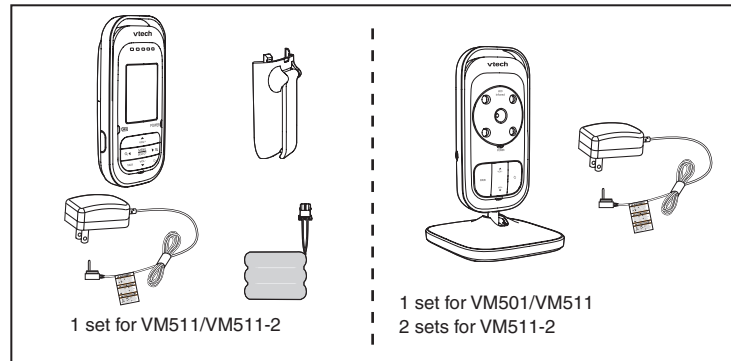


# vtech®

## Quick start guide



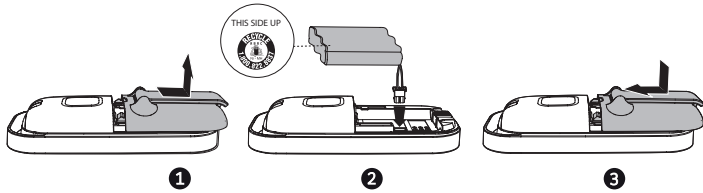
## What's in the box



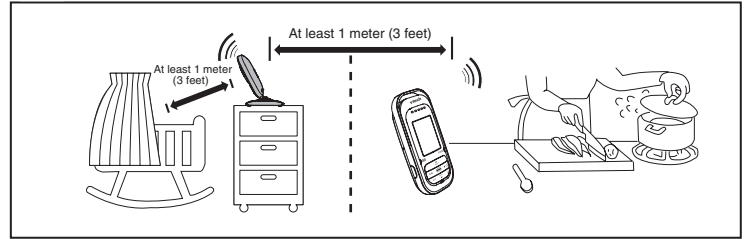
Specifications are subject to change without notice.  
© 2015 VTech Communications, Inc.  
All rights reserved. 07/15. VM511-X\_VM501\_QSG\_V1.0  
Document order number: 96-010456-010-100



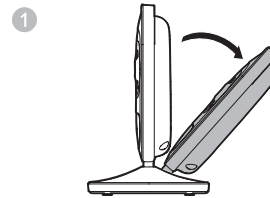
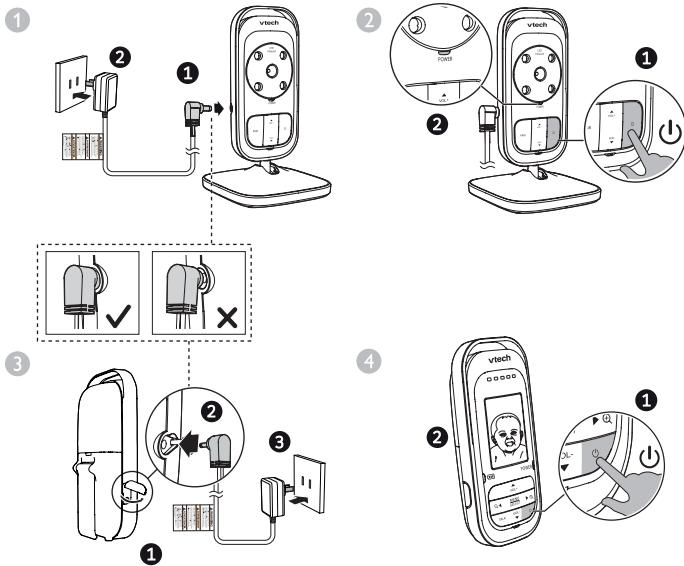
## Install the battery, connect, and power on



## Place the baby monitor

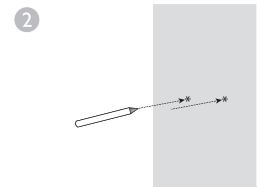


## Mount the baby monitor

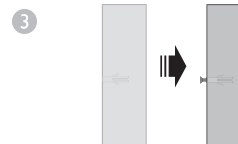


Adjust the baby unit angle.

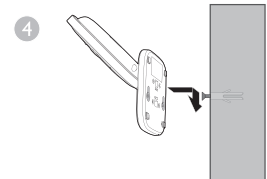
**NOTE** Check for reception strength and camera angle before drilling the holes.



Use a pencil to mark two holes in parallel. Make sure they are the same distance apart as the wall mount at the bottom of the baby unit.



Drill two holes in the wall (7/32" drill bit). If you drill the holes into a stud, insert the screws into the holes. Tighten the screws until only 1/4 inch of the screws are exposed.



Align the holes on the wall mount with the screws on the wall. Slide the wall mount down until it locks into place.