

Go to www.vtechphones.com to register your product for enhanced warranty support and latest VTech product news.

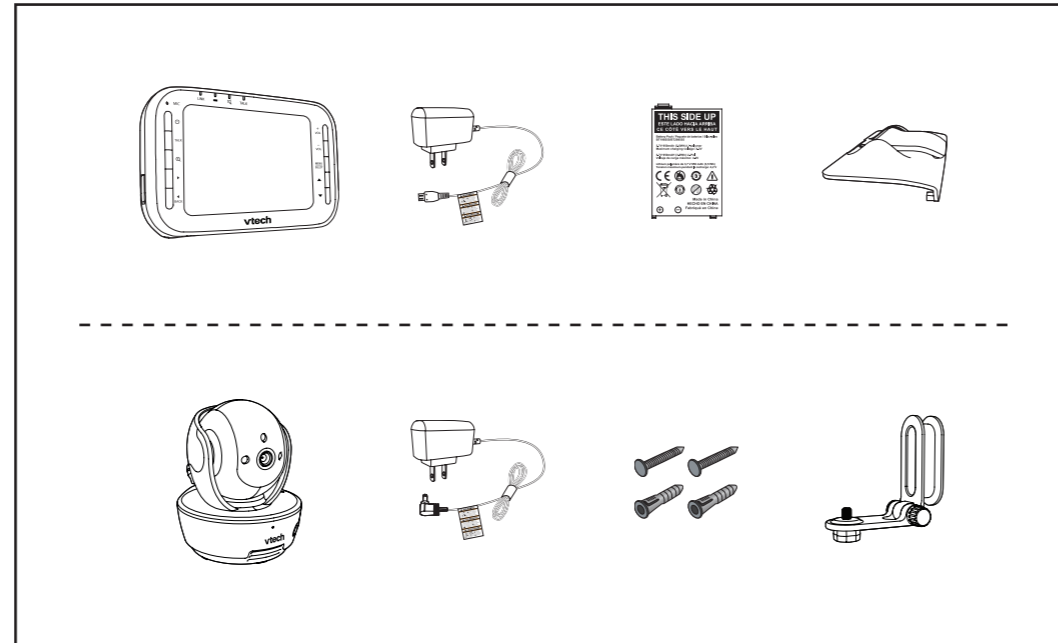
VM343



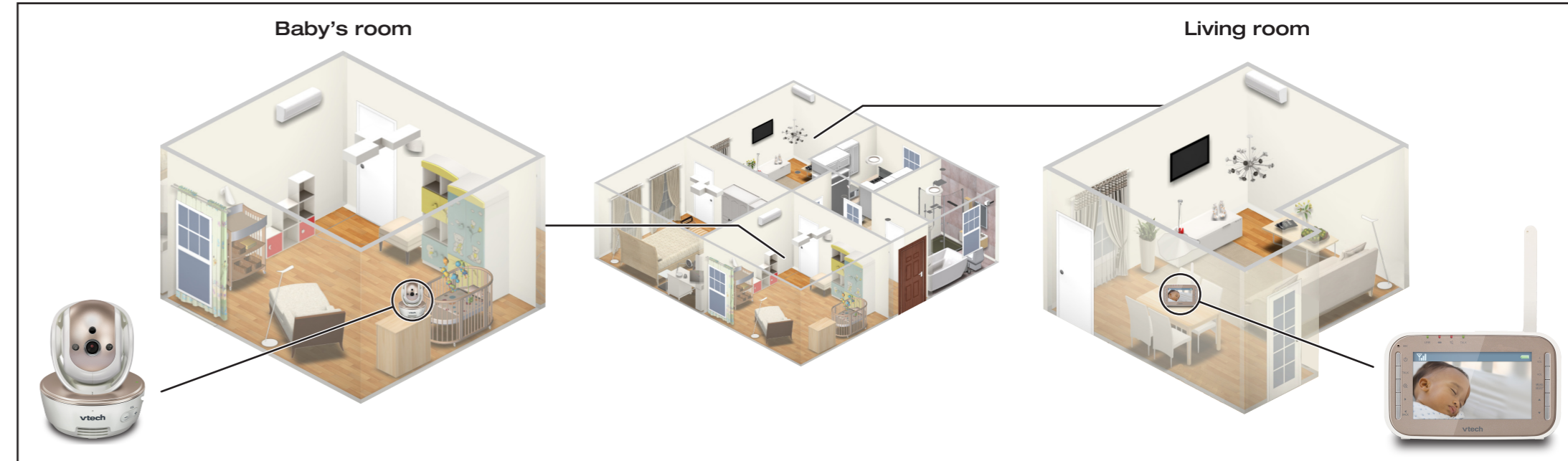
vtech

Quick start guide

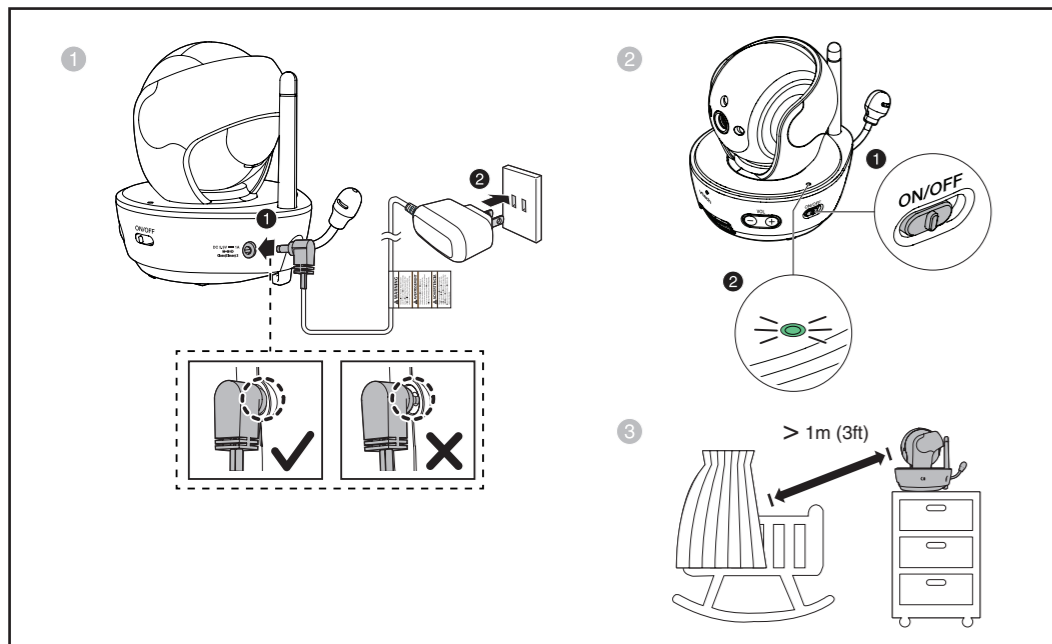
What's in the box



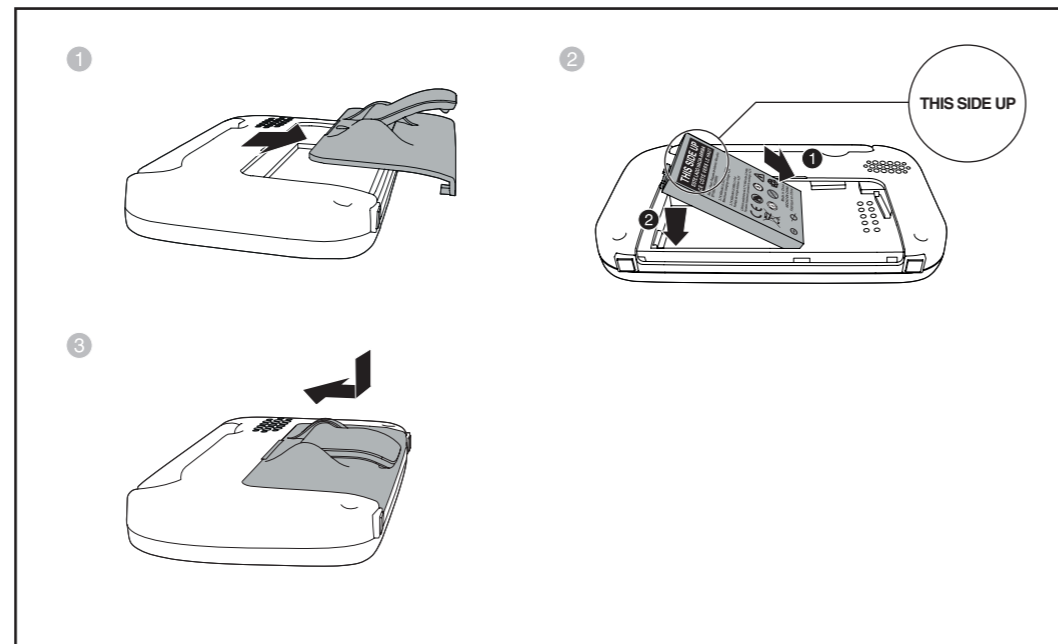
VM343 baby monitor system



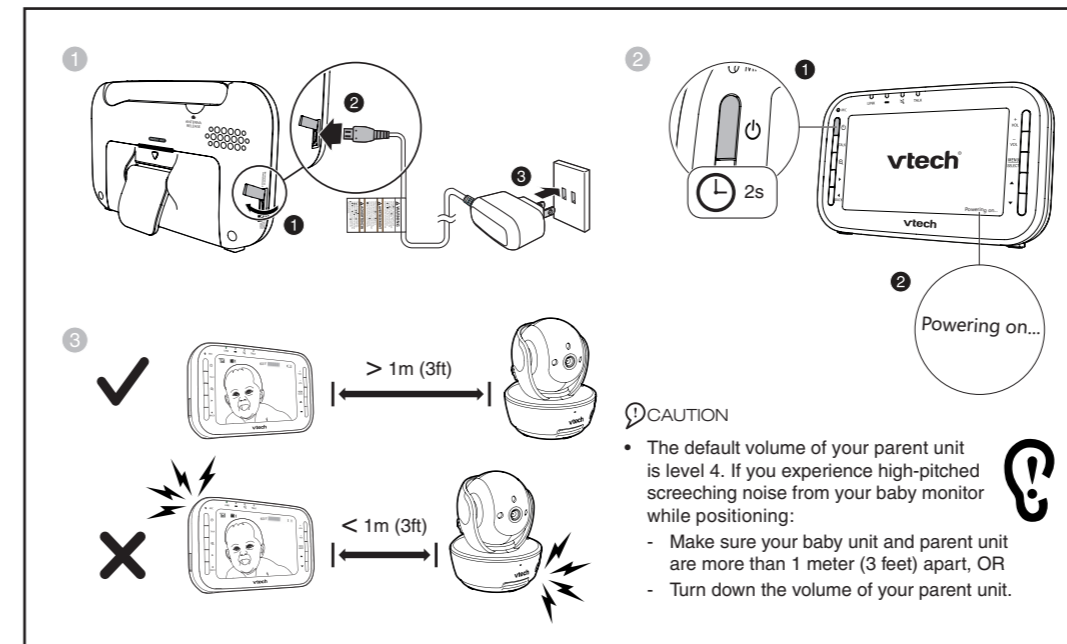
1 Connect and power on - Baby unit



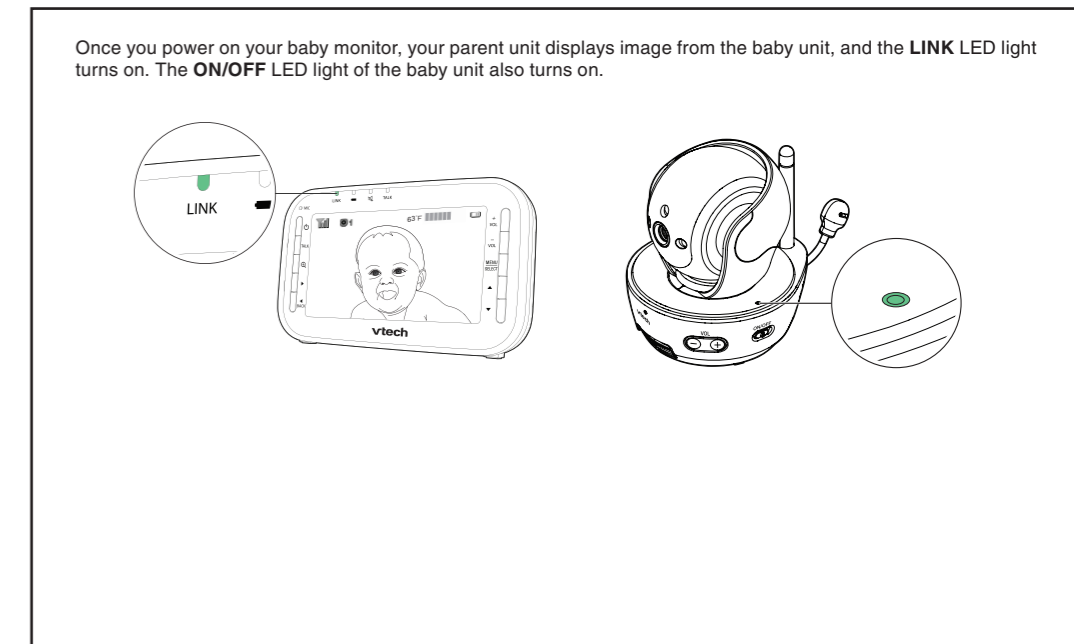
2 Install the battery



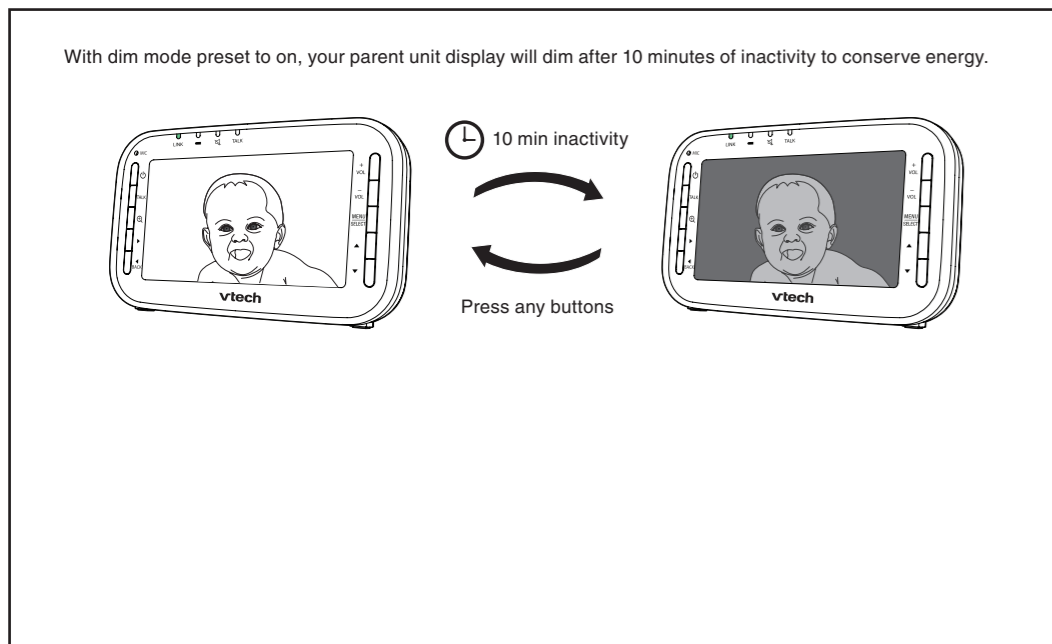
3 Connect and power on - Parent unit



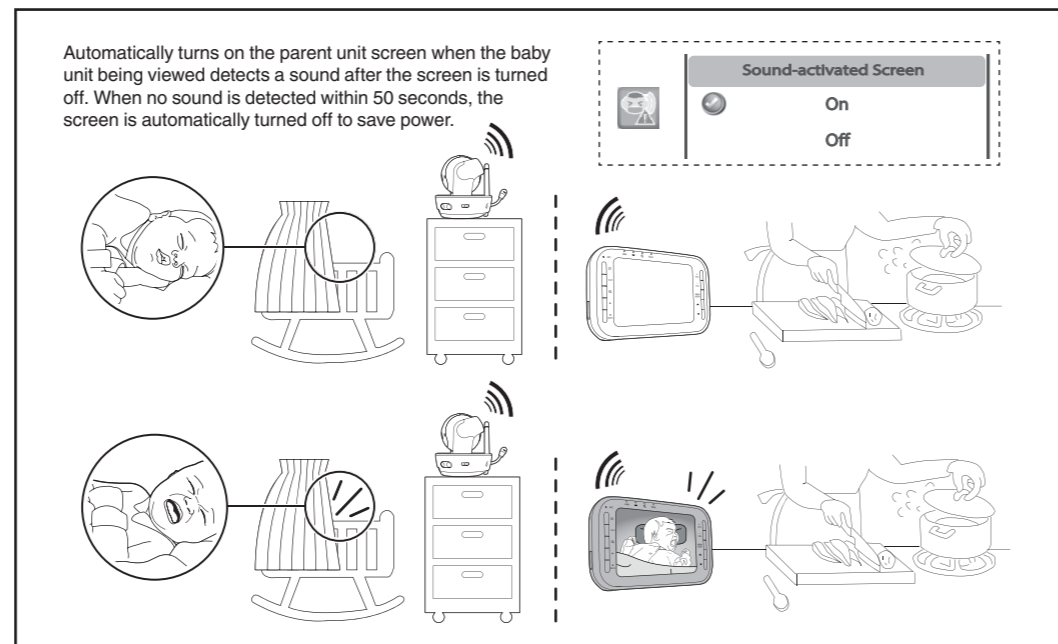
4 Status check



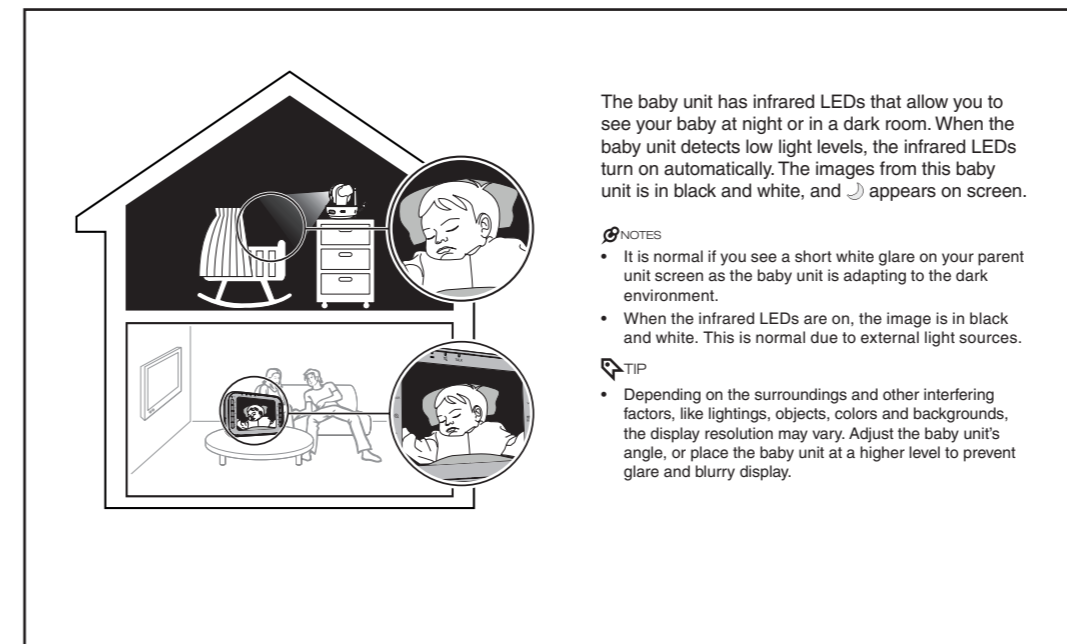
Dim mode



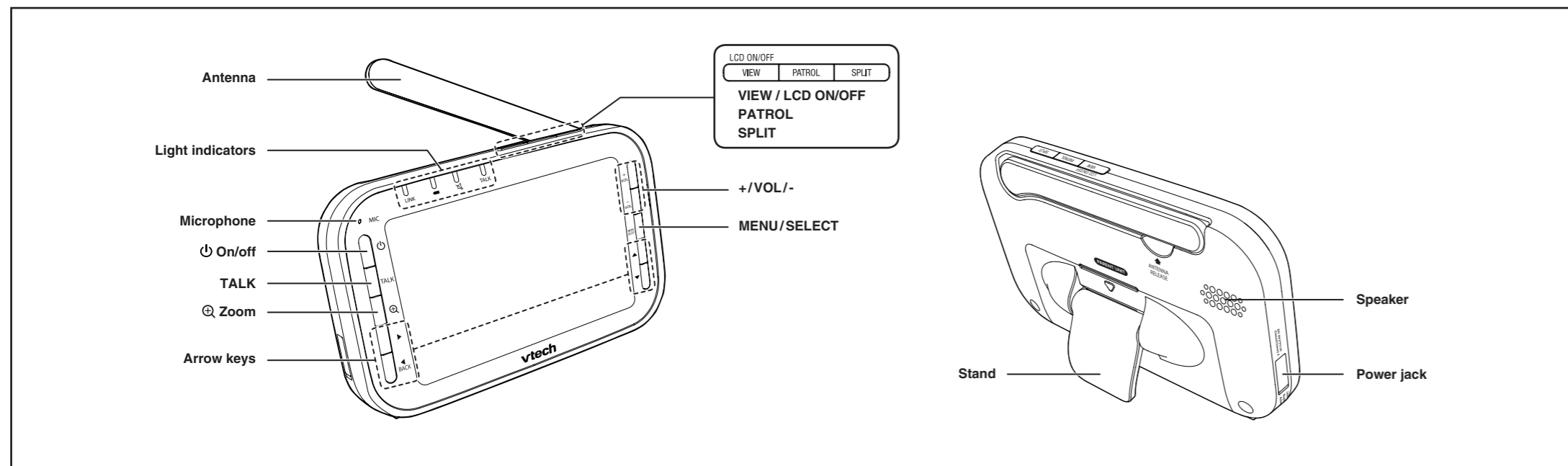
Sound activation



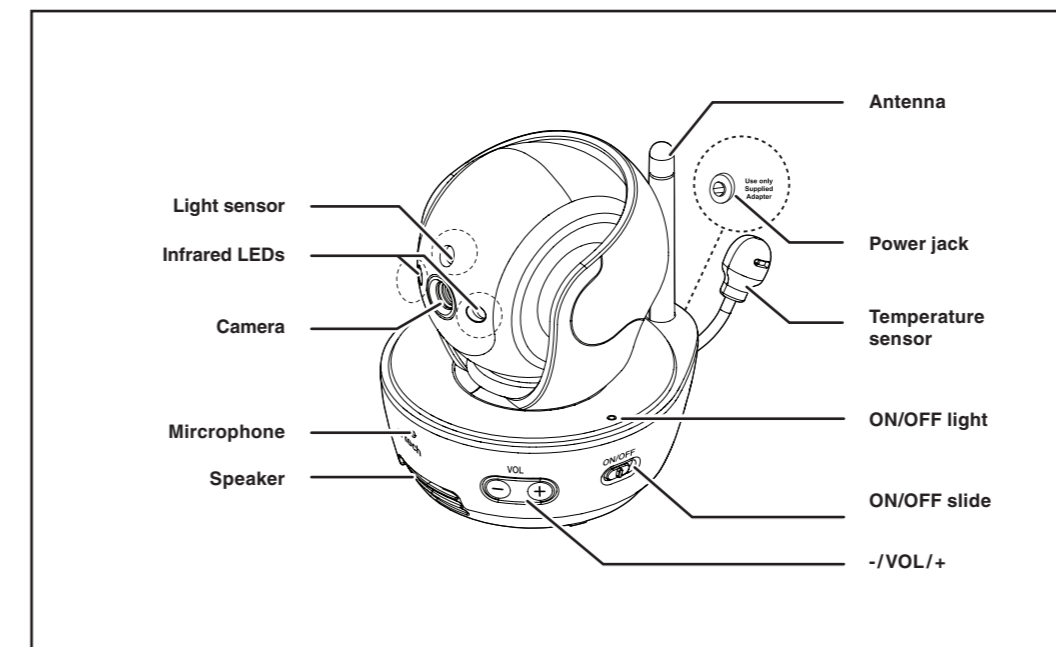
Night vision



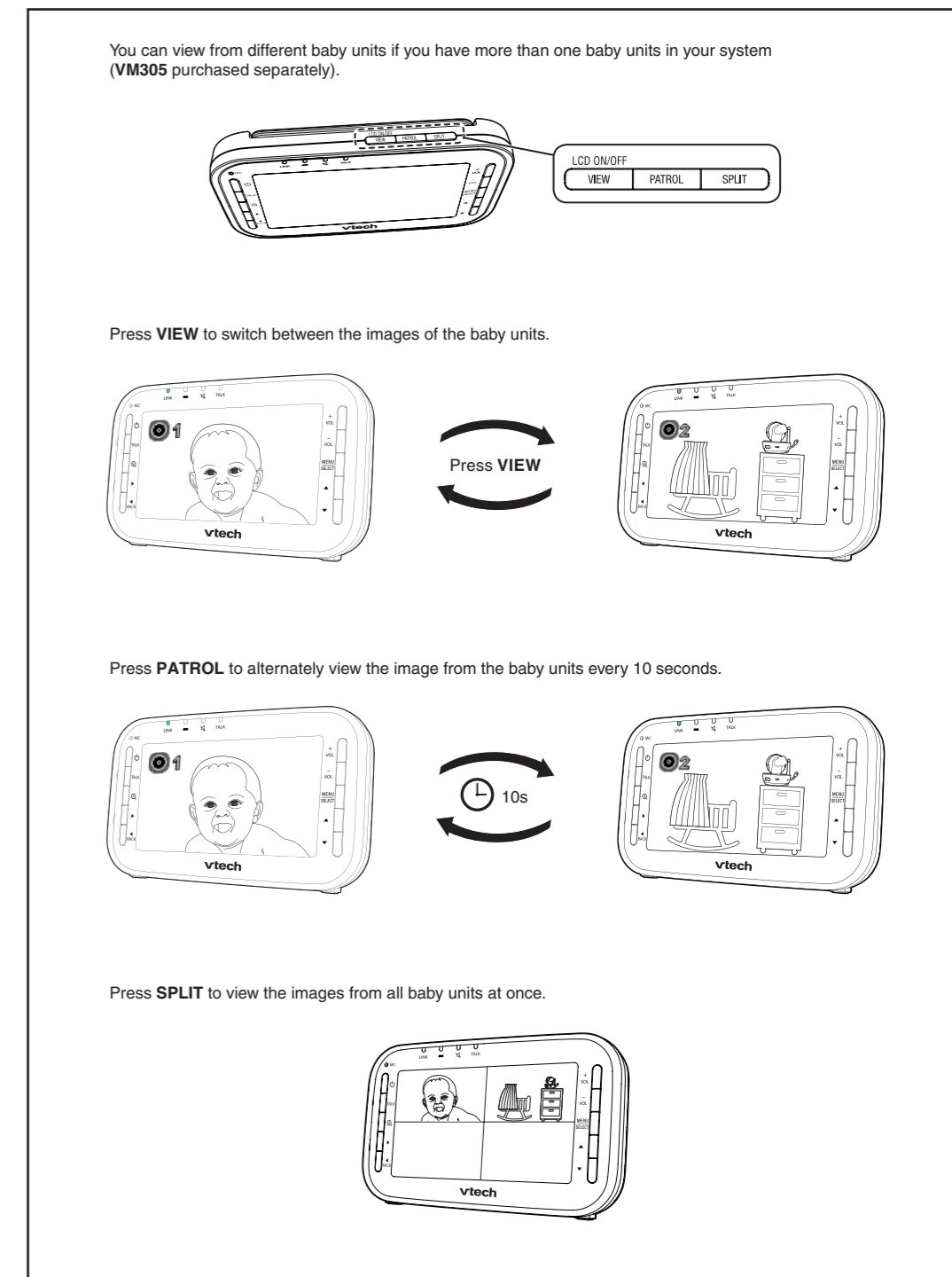
Overview - Parent unit



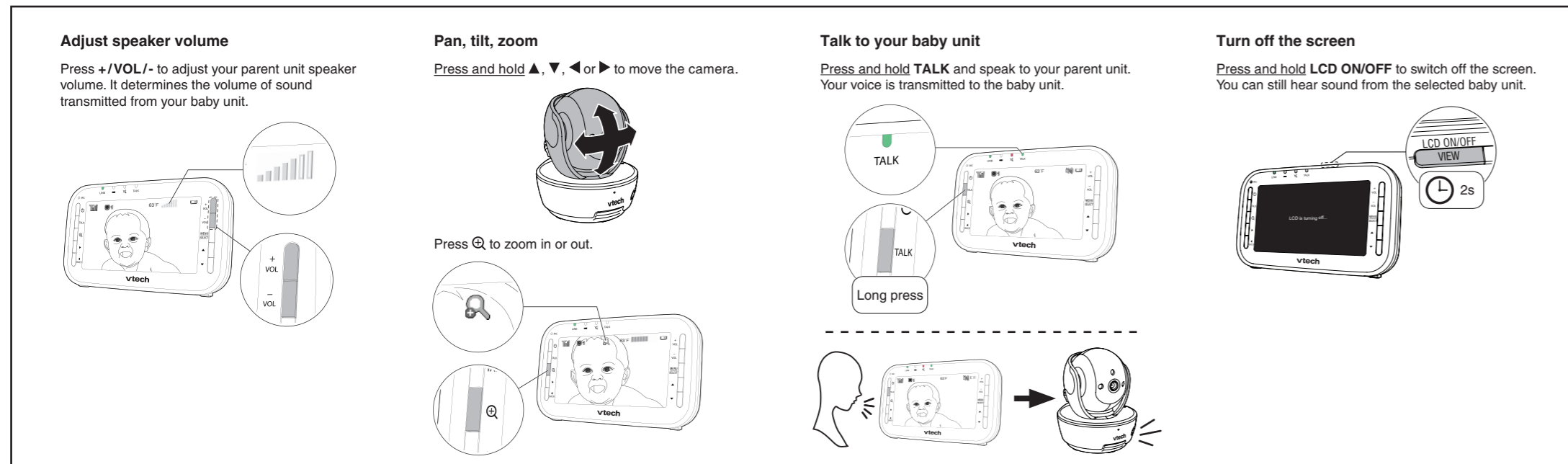
Overview - Baby unit



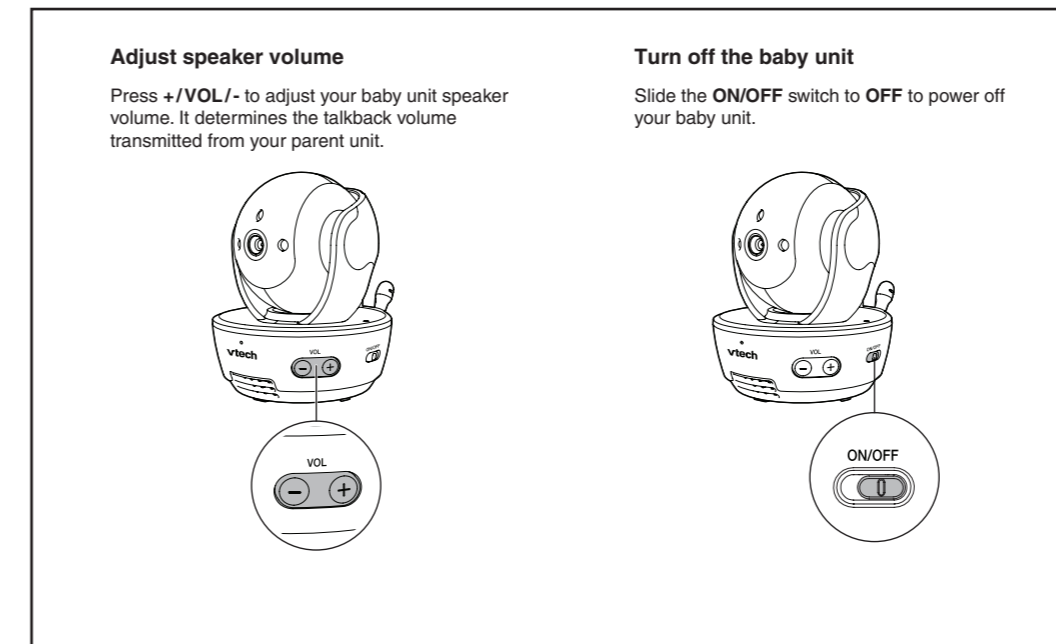
Change different views (require additional baby units - VM305)



Basic operation - Parent unit

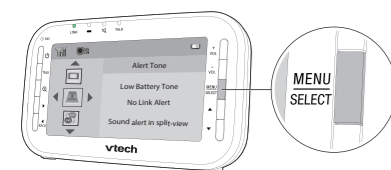


Basic operation - Baby unit



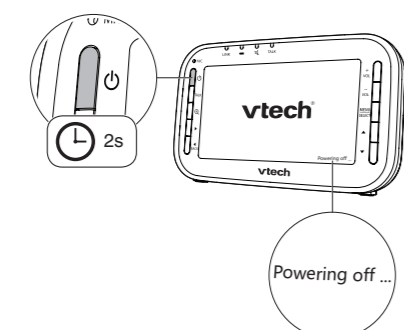
Use the menu

- Press **MENU/SELECT** to enter the menu, choose a menu item, or save a setting.
- While in the menu:
- Press **▲** or **▼** to scroll up or down.
 - Press **▶** to select an item.
 - Press **◀** **BACK** to return to the main menu or idle screen.

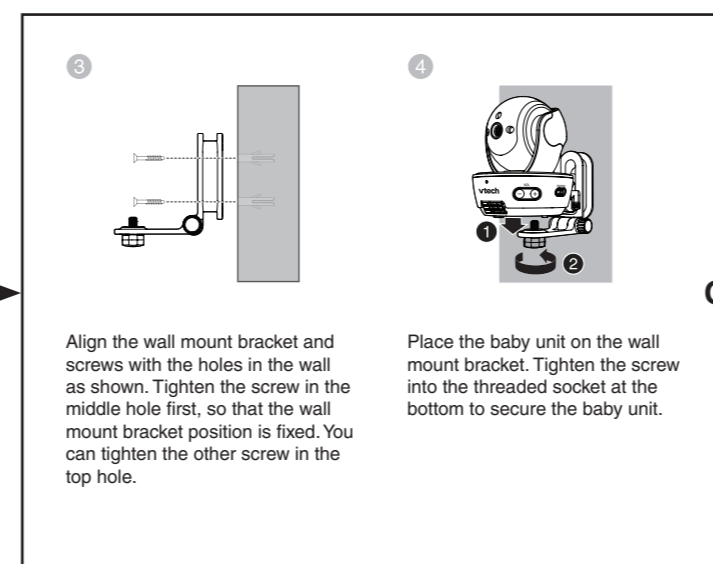
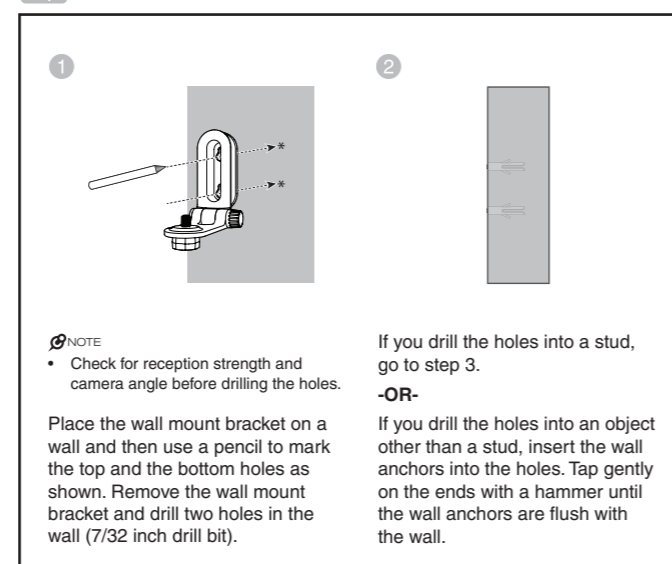


Turn off the parent unit

Press and hold **On** to power off your parent unit.



Mount the baby monitor (optional)



OR

