

Go to www.vtechphones.com to register your product for enhanced warranty support and the latest VTech product news.

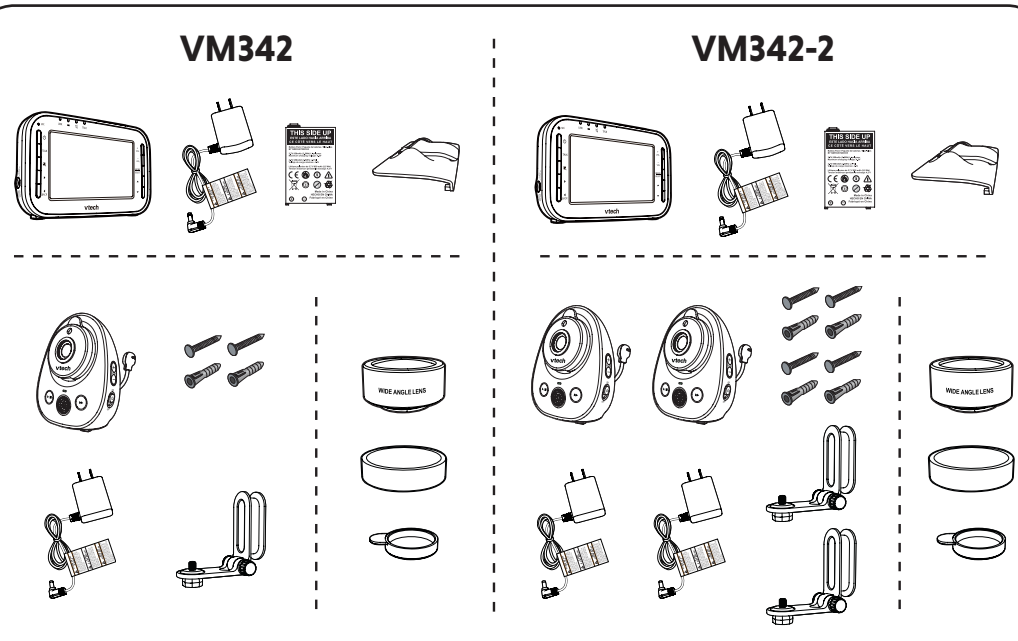
vtech

Quick start guide

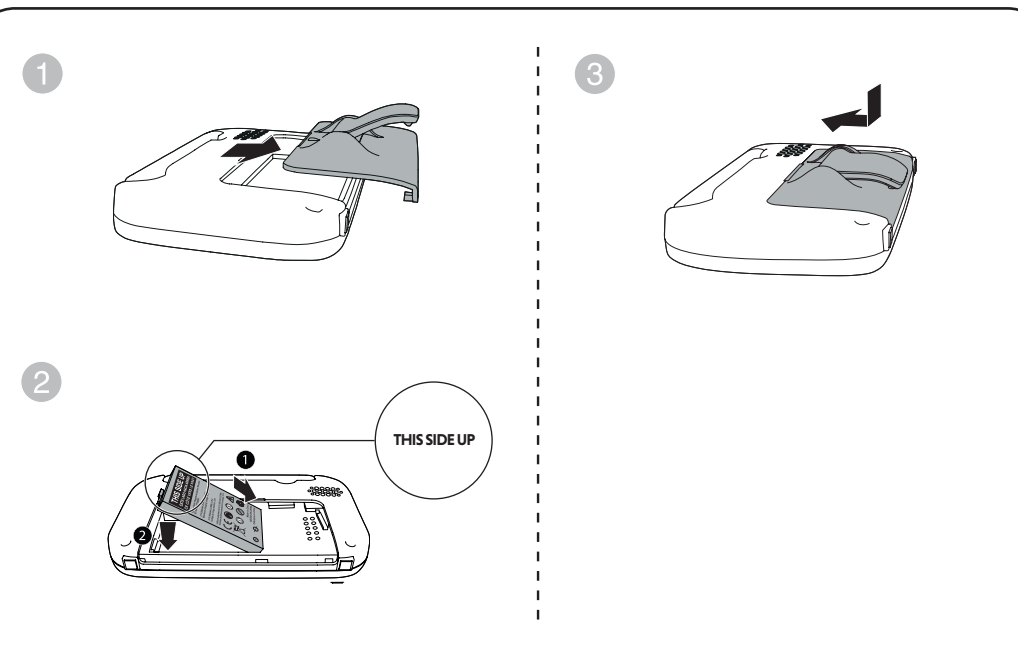
VM342
VM342-2

Full Color Video Monitor

WHAT'S IN THE BOX



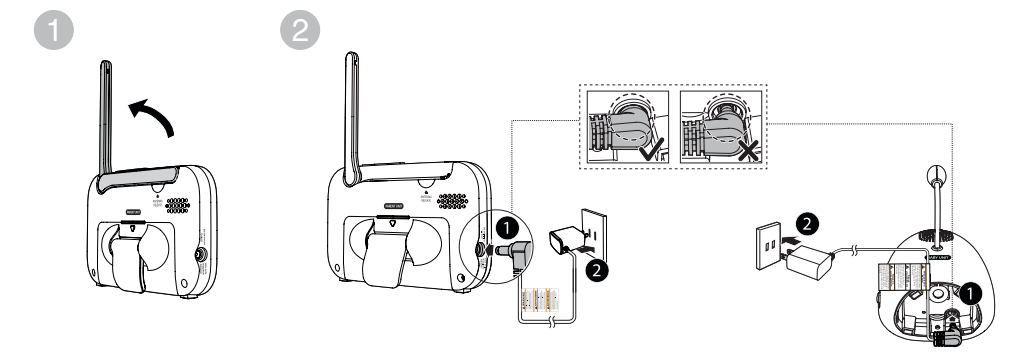
1 INSTALL THE BATTERY



2 CONNECT THE BABY MONITOR

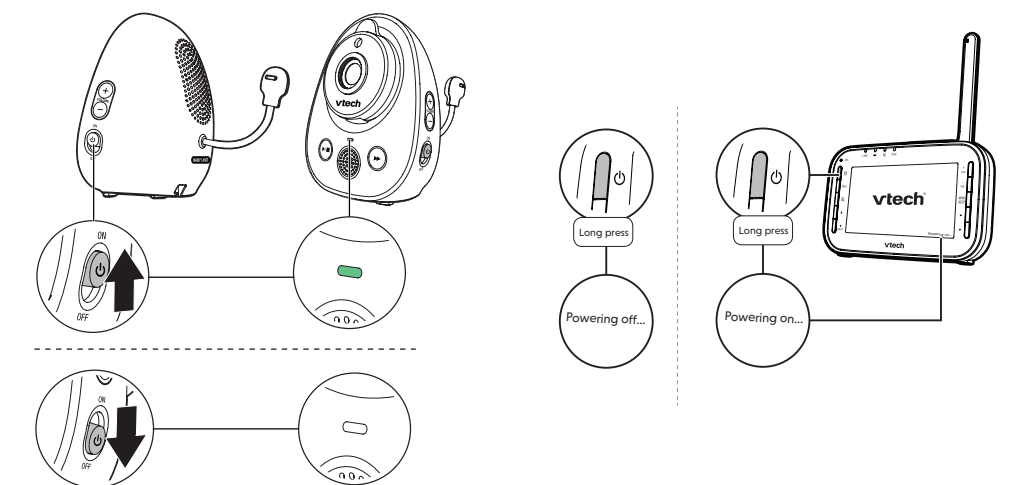
NOTES

- Use only the power adapters supplied with this product.
- Make sure the baby monitor is not connected to an electric outlet that is controlled by a switch.
- Connect the power adapters in a vertical or floor mount position only. The adapters' prongs are not designed to hold the weight of baby monitor, so do not connect them to any ceiling, under-the-table, or cabinet outlets. Otherwise, the adapters may not properly connect to the outlets.
- Make sure the parent unit, the baby units and the power adapter cords are out of reach of children.

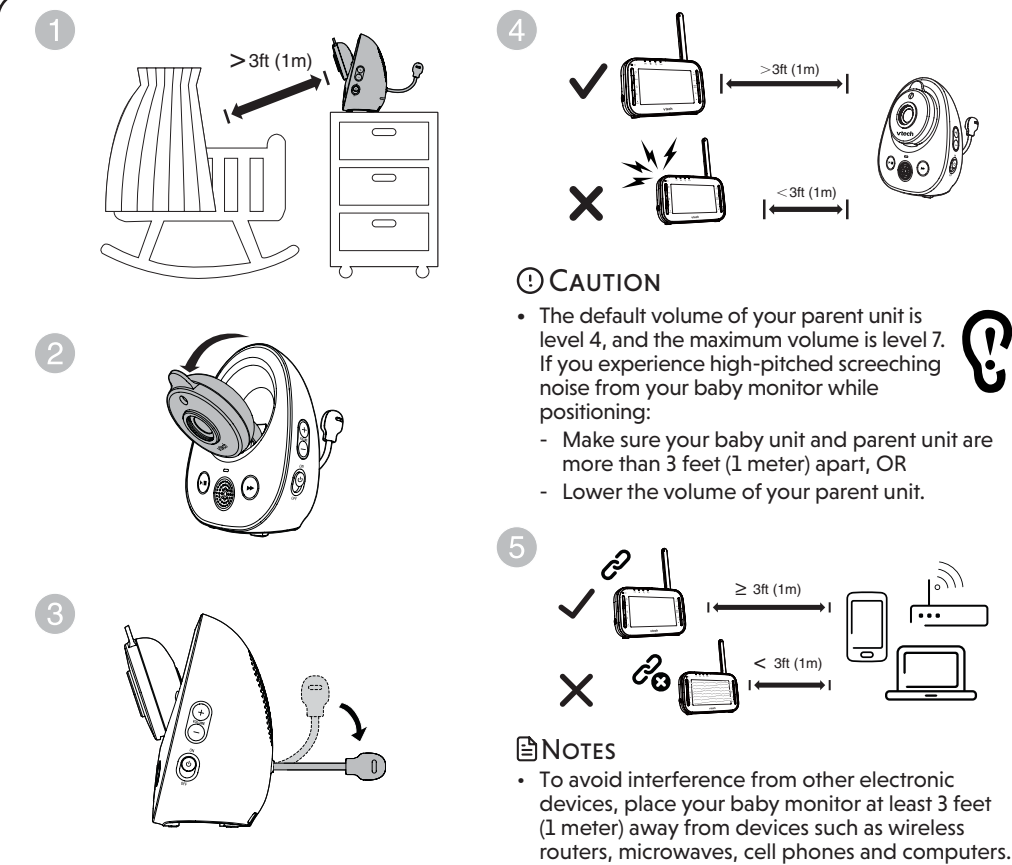


3 POWER ON OR OFF THE BABY MONITOR

- Slide the **ON/OFF** switch to power on or off your baby unit.
- Press and hold **ON** to power on or off your parent unit.



4 POSITIONING THE BABY MONITOR



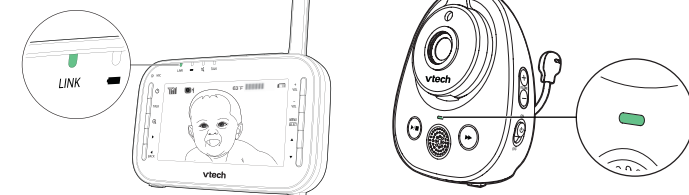
CAUTION

- The default volume of your parent unit is level 4, and the maximum volume is level 7. If you experience high-pitched screeching noise from your baby monitor while positioning:
 - Make sure your baby unit and parent unit are more than 3 feet (1 meter) apart, OR
 - Lower the volume of your parent unit.

5 STATUS CHECK

Once you power on both your baby unit and parent unit, your parent unit displays image from the baby unit, and the **LINK** LED light turns on.

The **ON/OFF** LED light of baby unit turns on.

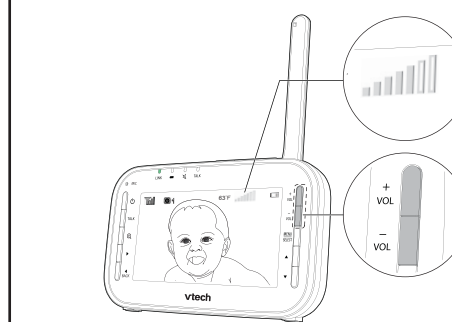


BASIC OPERATION - PARENT UNIT

Adjust speaker volume

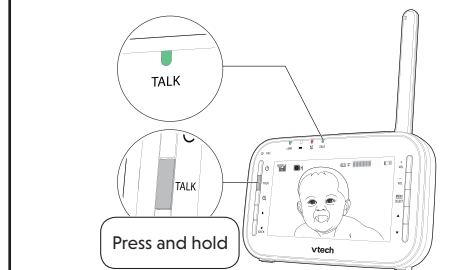
Press **vol** / **vol** to adjust your parent unit speaker volume.

The sound sensitivity setting also affects the speaker volume. For details, refer to **Sound sensitivity and sound activation**.



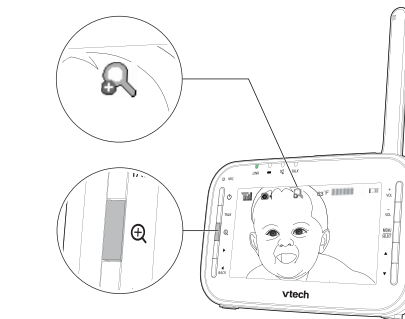
Talk to your baby unit

Press and hold **TALK** and speak to your parent unit. Your voice is transmitted to the baby unit.



Zoom

Press **Q** to zoom in or out.

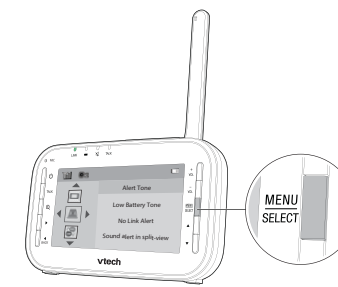


Use the menu

Press **MENU** / **SELECT** to enter the menu, choose a menu item, or save a setting. You can use the parent unit for advanced settings or operations, such as to play or stop the baby unit lullaby, or to adjust the baby unit sound sensitivity.

While in the menu:

- Press **▲** or **▼** to scroll among the menu options.
- Press **MENU** / **SELECT** or **▶** to select an item.
- Press **◀** to return to the main menu or idle screen.



BASIC OPERATION - BABY UNIT

Adjust speaker volume

Press **+ VOLUME** - to adjust your baby unit speaker volume. It determines the lullaby volume and talkback volume transmitted from your parent unit.

Lullaby

Press **▶/■** to play lullaby on the baby unit.

- Press **▶▶** to play the next lullaby.
- Press **▶/■** again to stop the lullaby.



