

Go to www.vtechphones.com to register your product for enhanced warranty support and the latest VTech product news.

VM3261
VM3261-2
Video Monitor



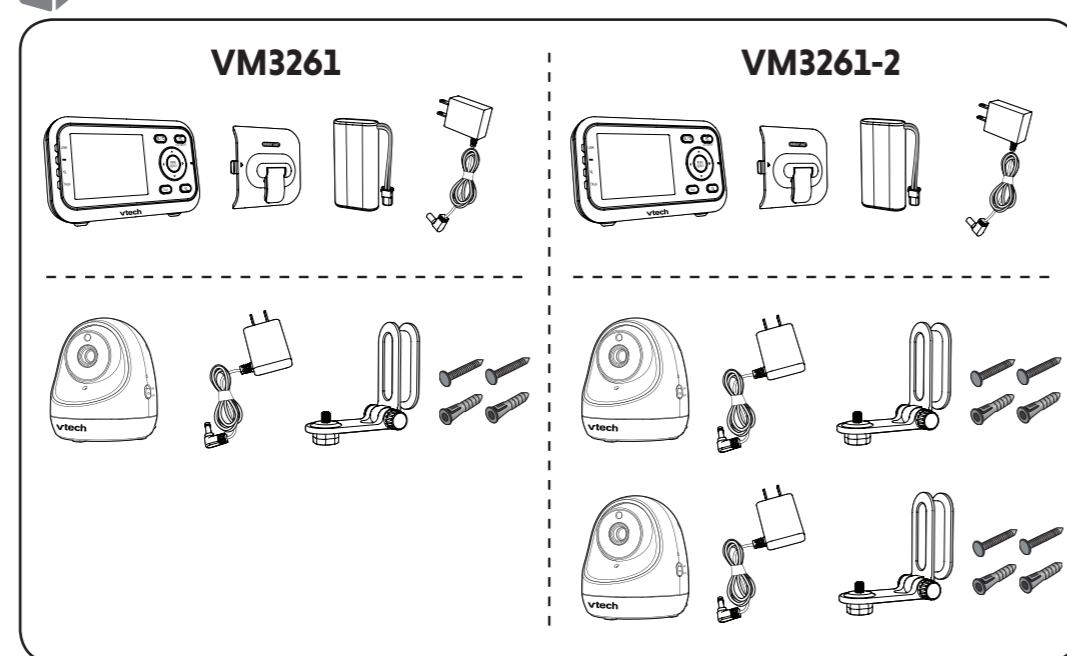
Quick start guide

vtech

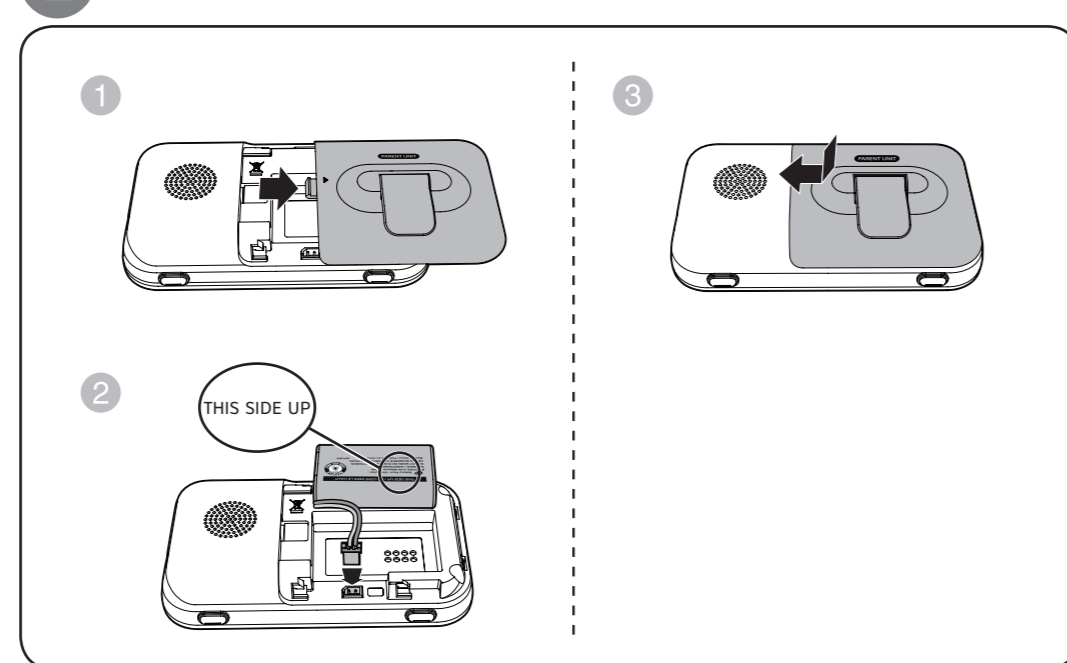
Document order number: 96-012003-040-100
© 2019 VTech Communications, Inc. All rights reserved.
Specifications are subject to change without notice.



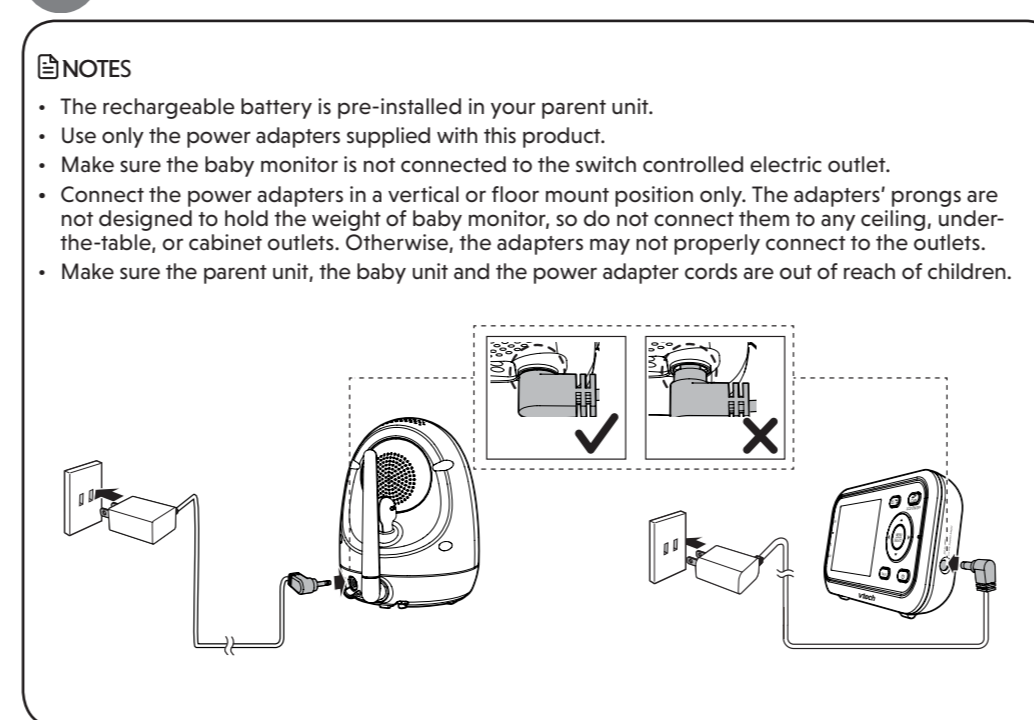
WHAT'S IN THE BOX



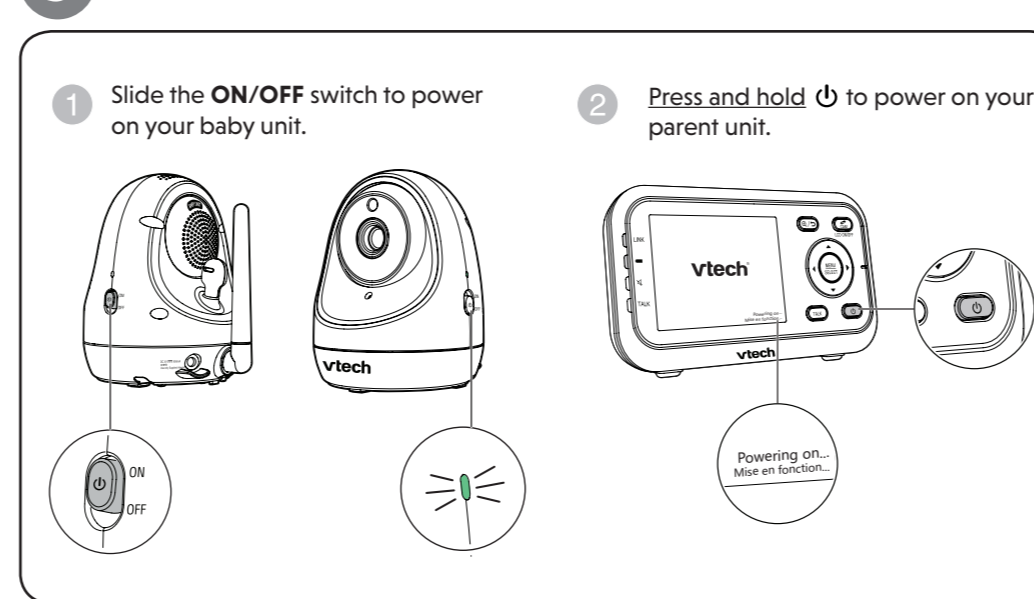
1 INSTALL THE BATTERY



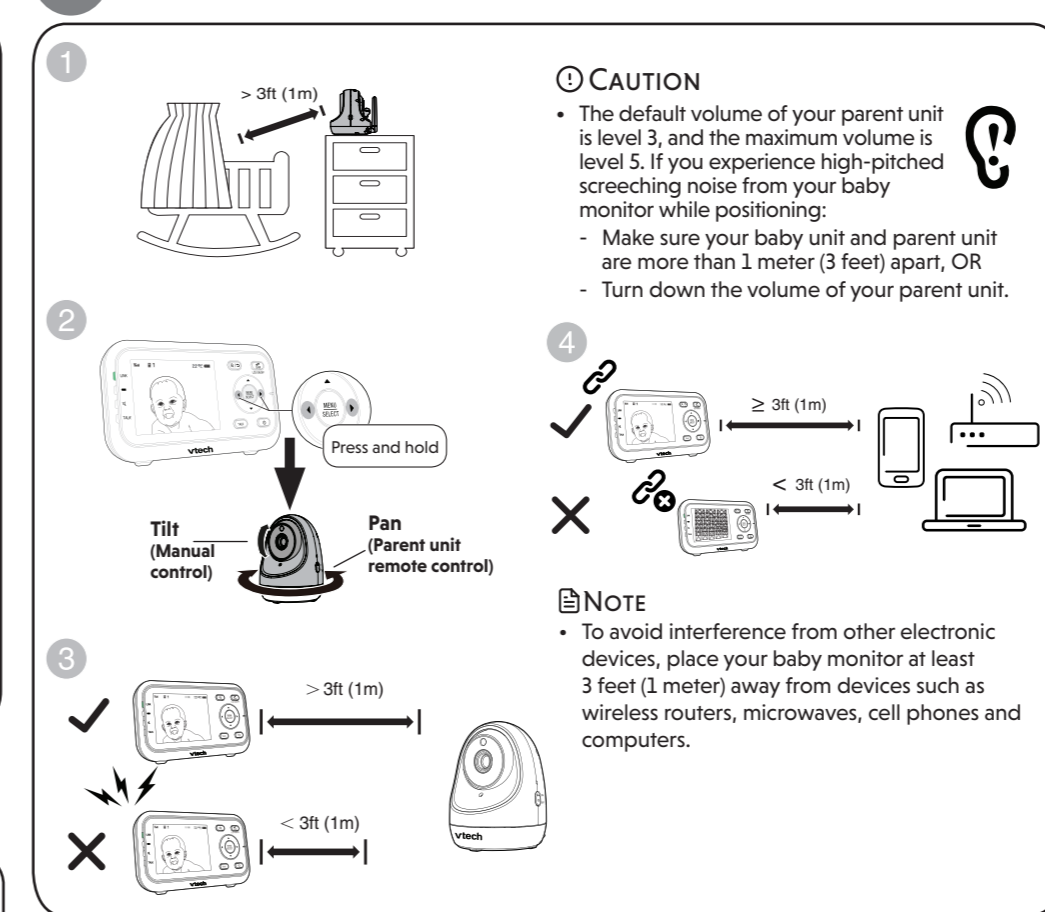
2 CONNECT THE BABY MONITOR



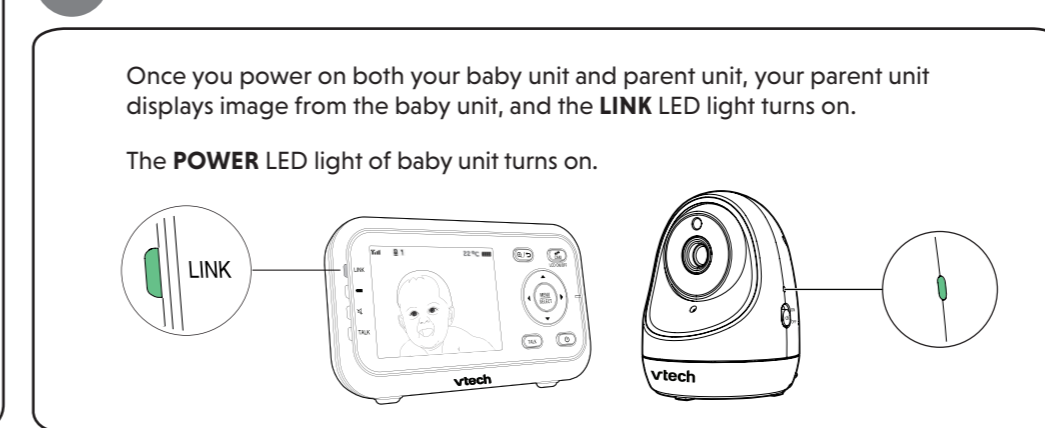
3 POWER ON THE BABY MONITOR



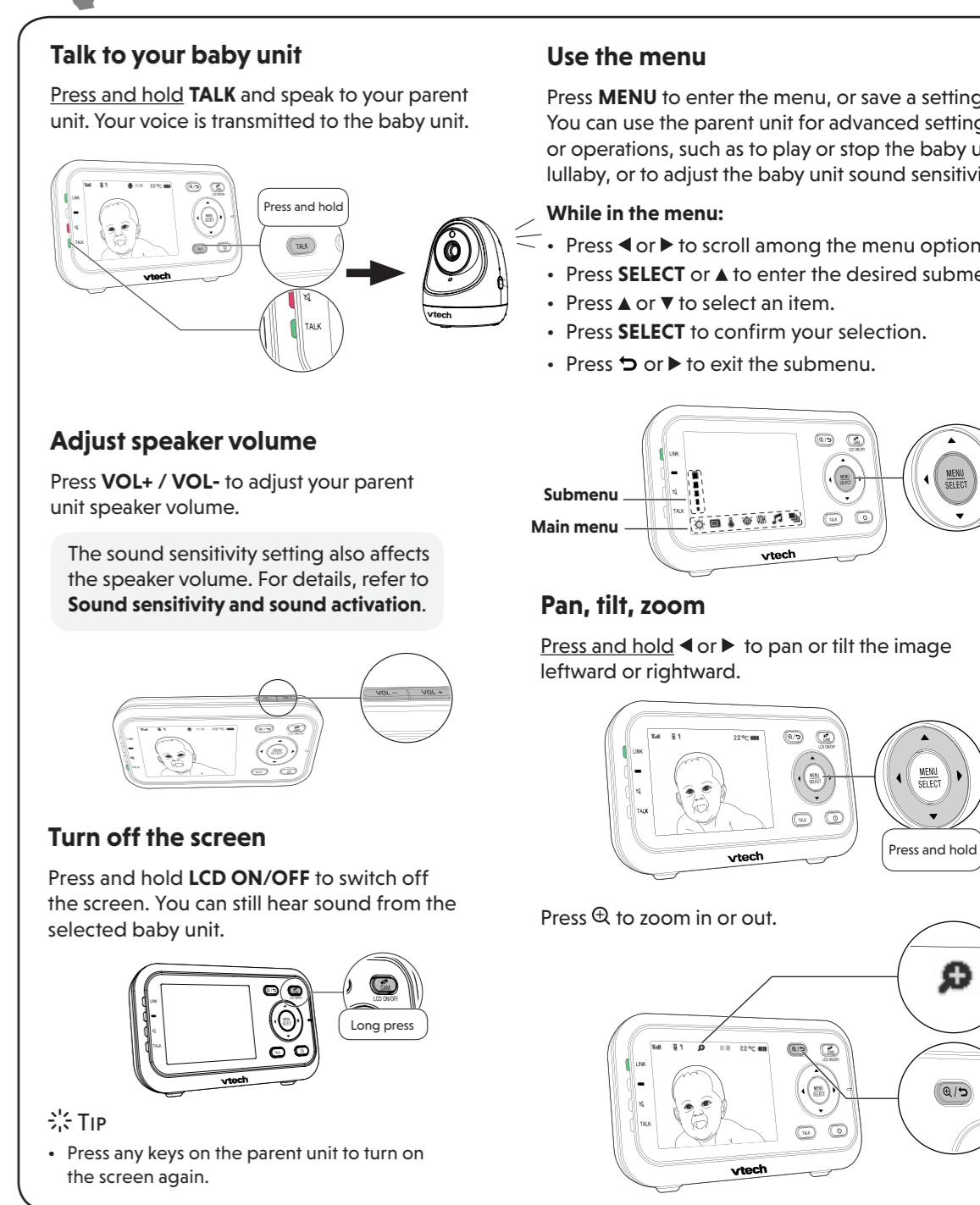
4 POSITIONING THE BABY MONITOR



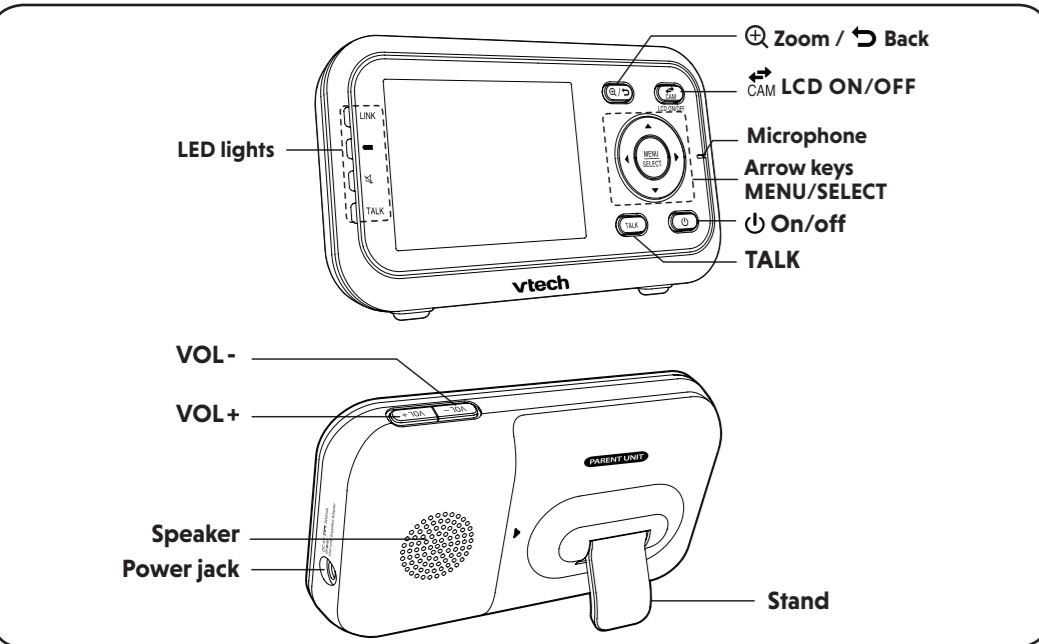
5 STATUS CHECK



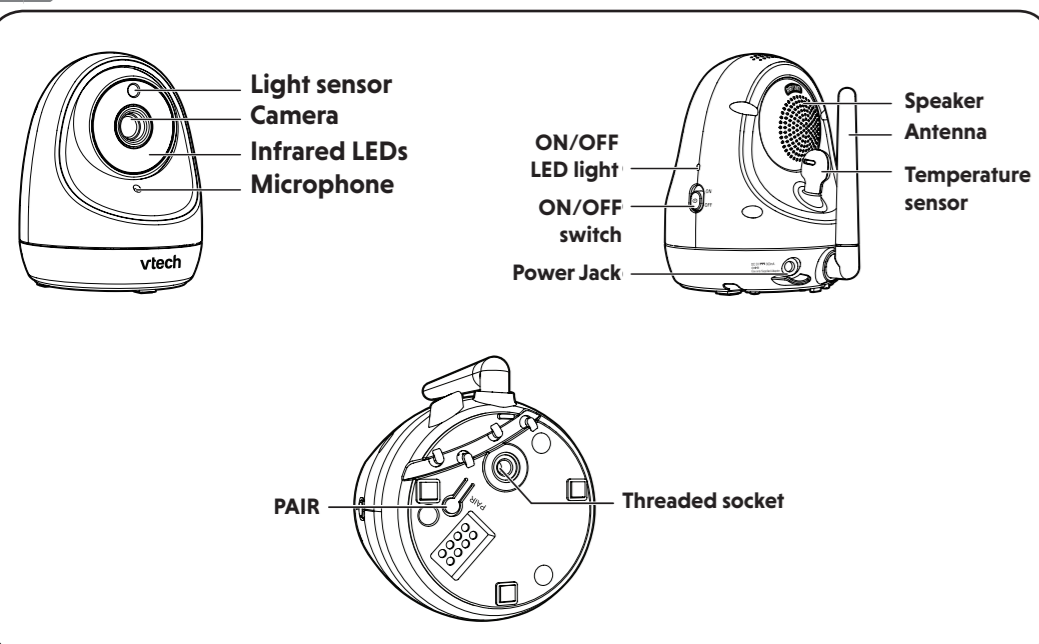
BASIC OPERATION - PARENT UNIT



OVERVIEW - PARENT UNIT



OVERVIEW - BABY UNIT



SOUND SENSITIVITY AND SOUND ACTIVATION

Adjust sound detection sensitivity

With sound sensitivity setting, you can choose to hear sounds from the baby unit all the time, or to hear sounds that exceed a certain level.

Parent unit setting	What happens...	You may experience...	What you could do...
Speaker volume: Low	Hear all sounds all the time, including background sounds.	Difficulty in hearing your baby's soft sounds if the background sounds are louder.	<ul style="list-style-type: none"> Increase parent unit's speaker volume, and lower sound sensitivity. If you are using a white noise machine or sound machine, set its volume to low, or relocate it to minimize background sounds.
Sensitivity: Highest [Default]			
Speaker volume: MAX	Only hear sounds that exceed the selected sound sensitivity level.	No sound; or sounds that cut in and out at times as the baby unit may not detect extra soft sounds.	Increase the sound sensitivity, and adjust the volume level if necessary.
Sensitivity: Low / Medium			

For details, please see **Adjust the sound sensitivity of the baby unit** in the User's manual.

Sound activated screen

When sound activation is on, the parent unit screen stays off to save power when the baby unit detects no sound.

Once the baby unit detects sounds that are louder than the chosen sound sensitivity level, the parent unit screen turns on automatically. It will then turn off again after 50 seconds of no sound detection.

NIGHT VISION

The baby unit has infrared LEDs that allow you to see your baby clearly at night or in a dark room. When the baby unit being viewed detects low light levels, the infrared LEDs are switched on automatically. The images from the baby unit are in black and white, and appears on the screen.

NOTES

- It is normal if you see a short white glare on your parent unit screen as the baby unit is adapting to the dark environment.
- When the infrared LEDs are on, the images are in black and white. This is normal.

TIP

- Depending on the surroundings and other interfering factors, like lightings, objects, colors and backgrounds, the display resolution may vary. Adjust the baby unit's angle or place the baby unit at a higher level to prevent glare and blurry display.

MOUNT THE BABY UNIT (OPTIONAL)

- Use a pencil to mark two holes in parallel. Make sure they are the same distance apart as the wall mount holes on the baby unit.
- If you drill the holes into a stud, go to step 3. **-OR-** If you drill the holes into an object other than a stud, insert the wall anchors into the holes. Tap gently on the ends with a hammer until the wall anchors are flush with the wall.

NOTES

- Check for reception strength and camera angle before drilling the holes.
- The types of screws and anchors you need depend on the composition of the wall.

- Align the wall mount bracket and screws with the holes in the wall as shown. Tighten the screw in the middle hole first, so that the wall mount bracket position is fixed. You can tighten the other screw in the top hole.
- Insert the screws into the holes and tighten the screws until only 1/4 inch of the screws are exposed.
- Place the baby unit on the wall mount bracket. Tighten the screw into the threaded socket at the bottom to secure the baby unit.
- Place the baby unit on the wall mount bracket. Tighten the screw into the threaded socket at the bottom to secure the baby unit. Align the holes on the wall mount bracket with the screws on the wall, and slide the wall mount bracket down until it locks into place.
- You can maximize your baby unit's viewing angles by tilting the wall mount bracket. Hold the baby unit, and then rotate the knob in anticlockwise direction. This will loosen the joint of the wall mount bracket. Tilt your baby unit up or down to adjust to your preferred angle. Then, rotate the knob in clockwise direction to tighten the joint and secure the angle.

FOR VM3261-2 ONLY

Status check - Two baby units

If you are viewing baby unit 1, the **POWER** LED light of baby unit 1 turns on. As baby unit 2 is not being viewed, its **POWER** LED light flashes.

NOTE

- If you power on only one baby unit, your parent unit may display and the LINK LED light flashes. Press **CAM** to switch to the baby unit you have powered on.

Change different views - Patrol

Press **MENU** when the parent unit is idle. Press **◀** or **▶** to choose , then press **SELECT** or **▲**. Press **▼** or **▲** to choose **ON**, then press **SELECT** to confirm your selection.

10s

Change different views - Single-cam

Press **CAM** to switch to another camera in **SINGLE-CAM** mode.