

Go to [www.vtechphones.com](http://www.vtechphones.com) to register your product for enhanced warranty support and the latest VTech product news.

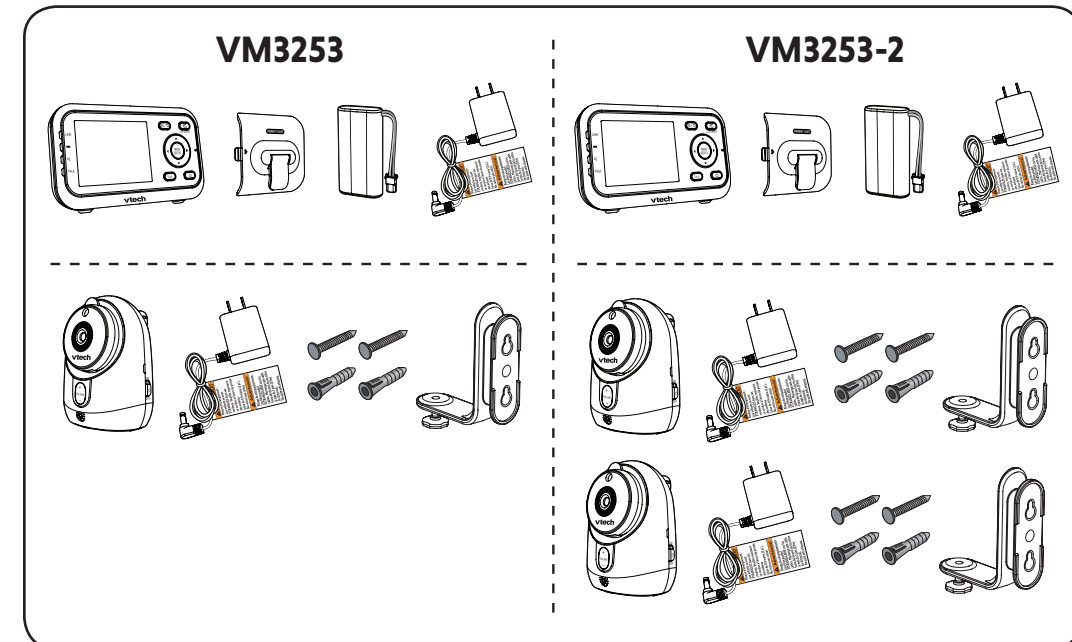
VM3253  
VM3253-2  
Video Monitor



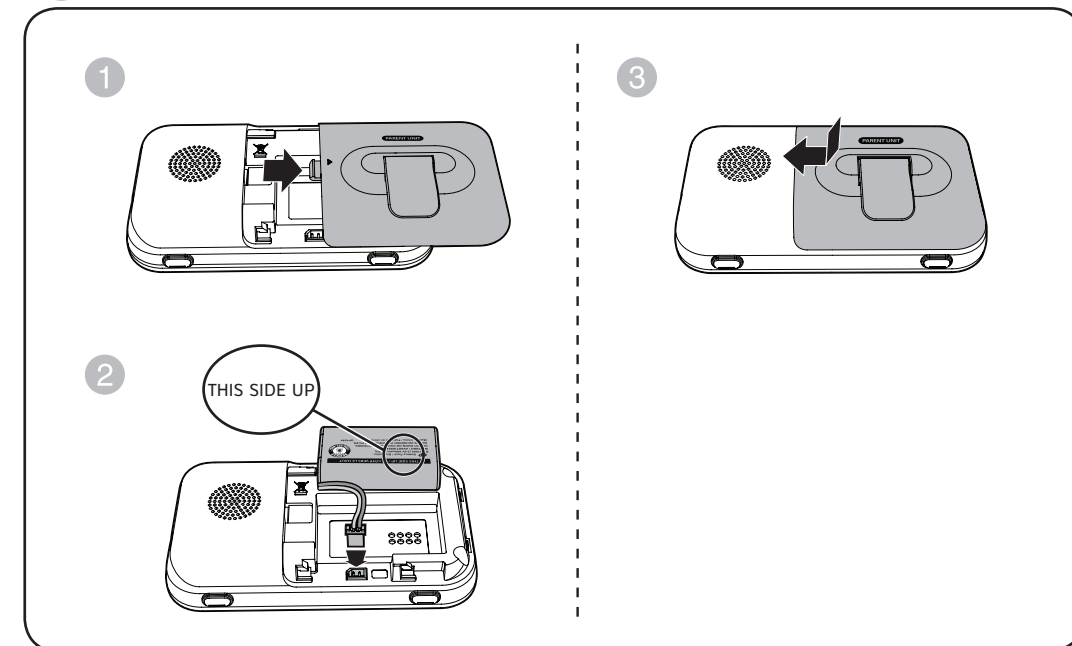
vtech®

Quick start guide

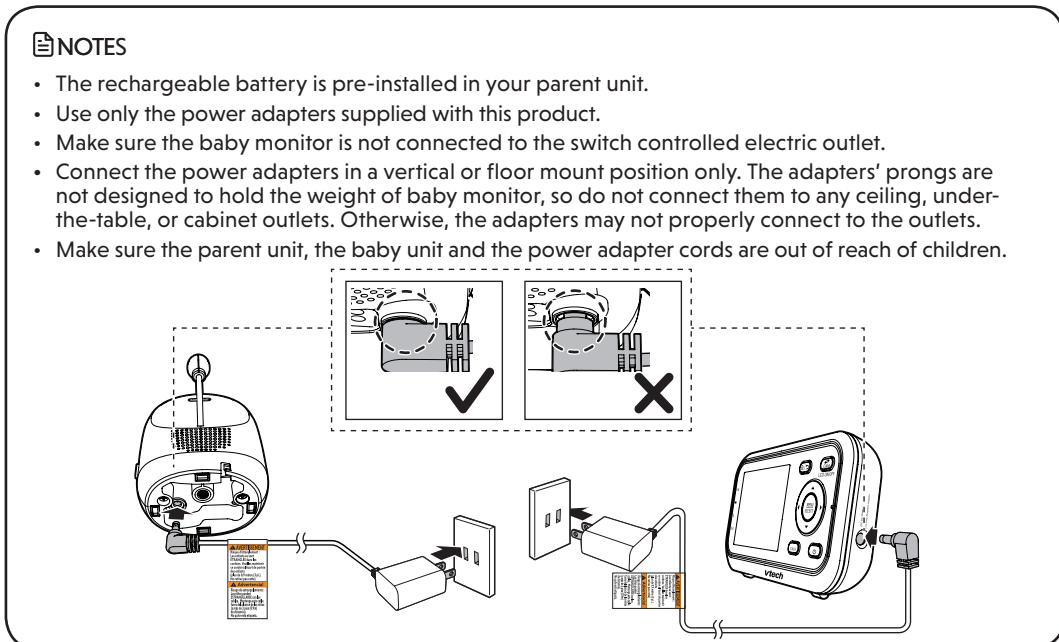
## WHAT'S IN THE BOX



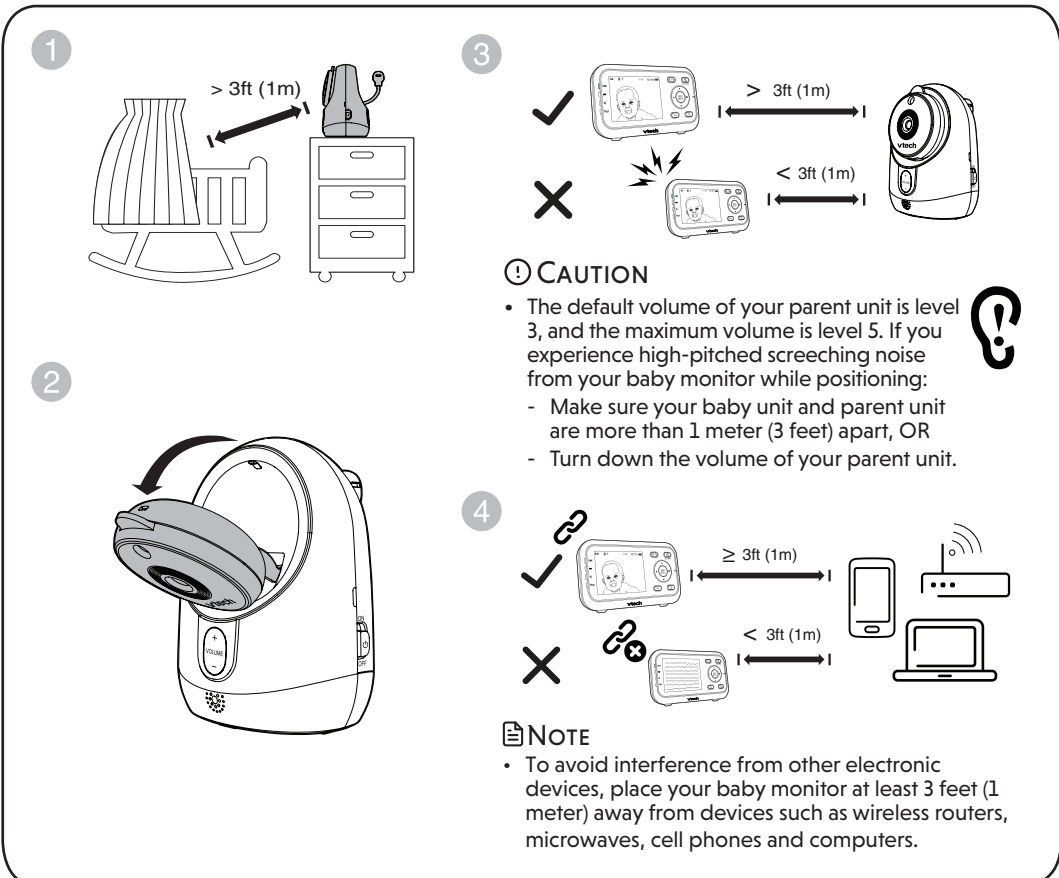
## 1 INSTALL THE BATTERY



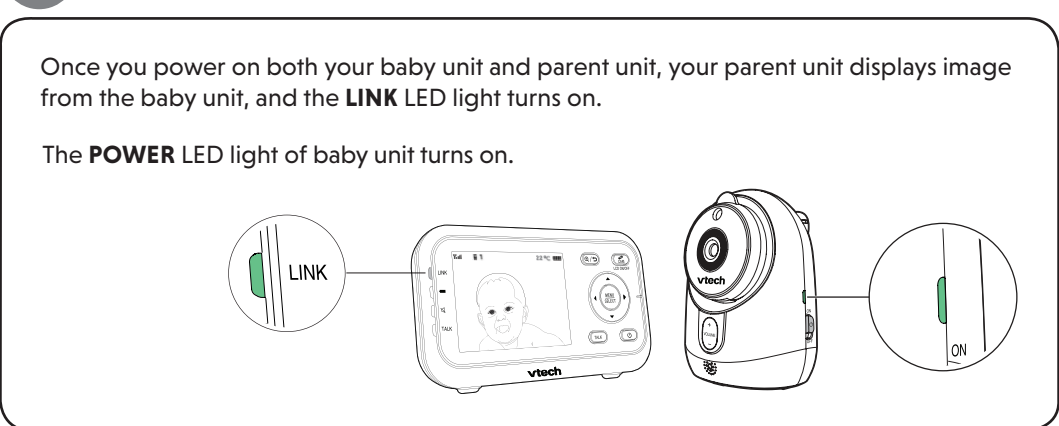
## 2 CONNECT THE BABY MONITOR



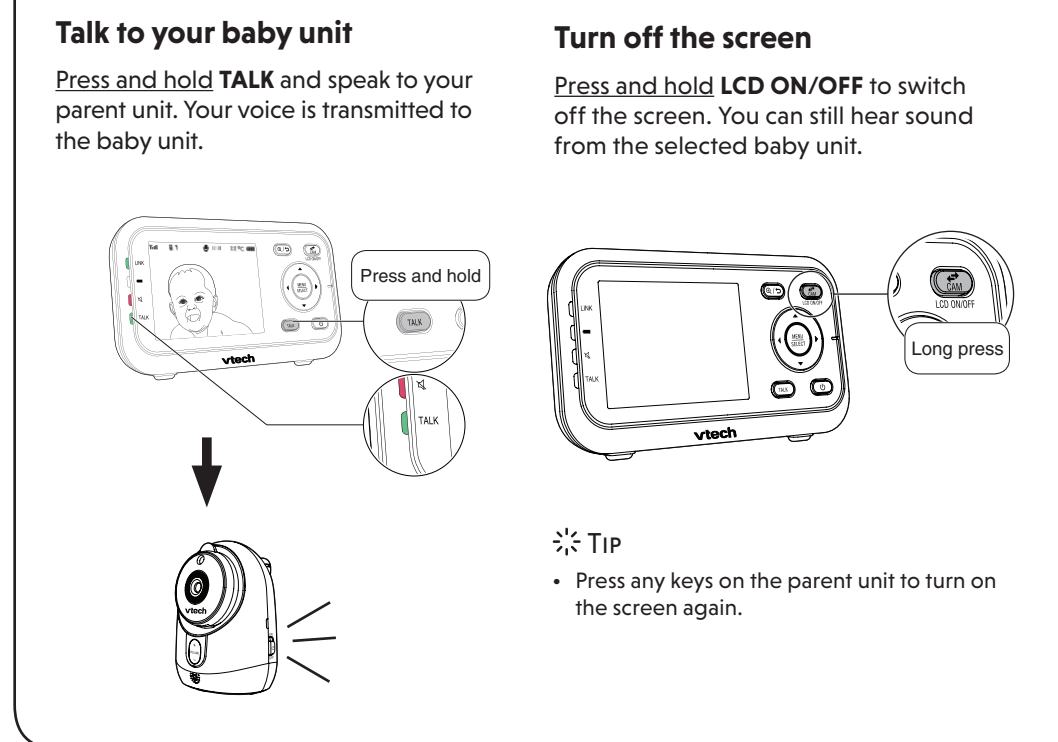
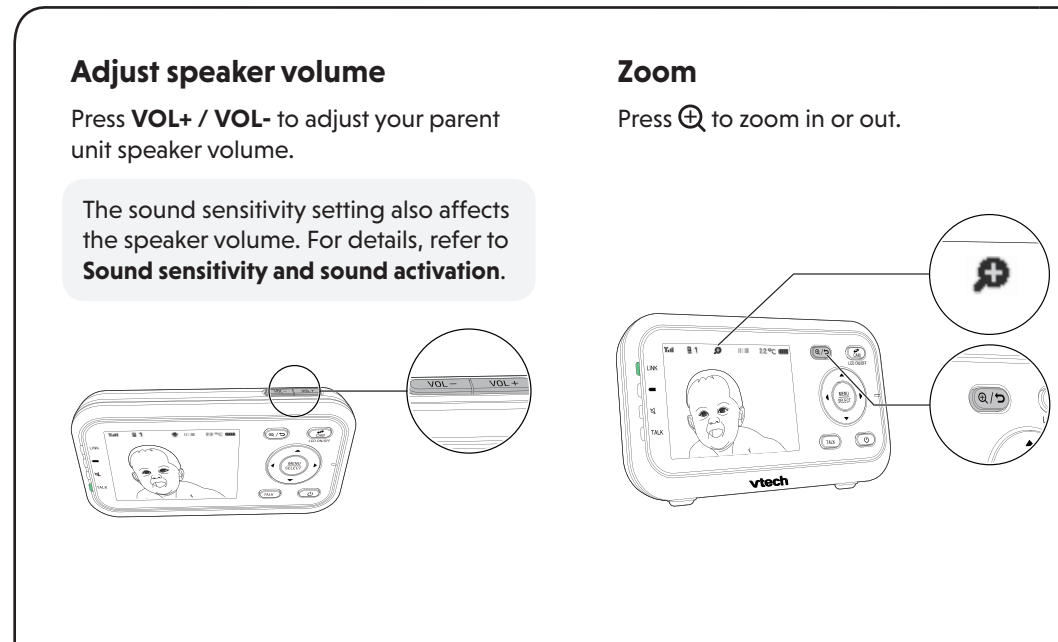
## 4 POSITIONING THE BABY MONITOR



## 5 STATUS CHECK



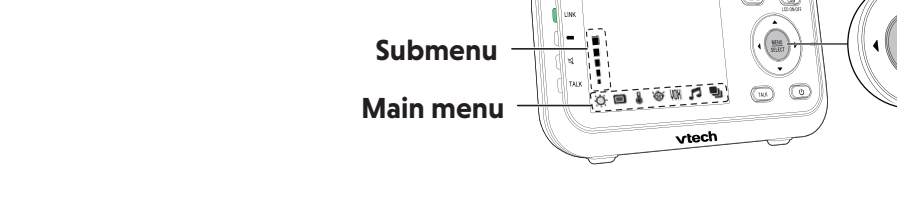
## BASIC OPERATION - PARENT UNIT



**Use the menu**  
Press **MENU** to enter the menu, or save a setting. You can use the parent unit for advanced settings or operations, such as to play or stop the baby unit lullaby, or to adjust the baby unit sound sensitivity.

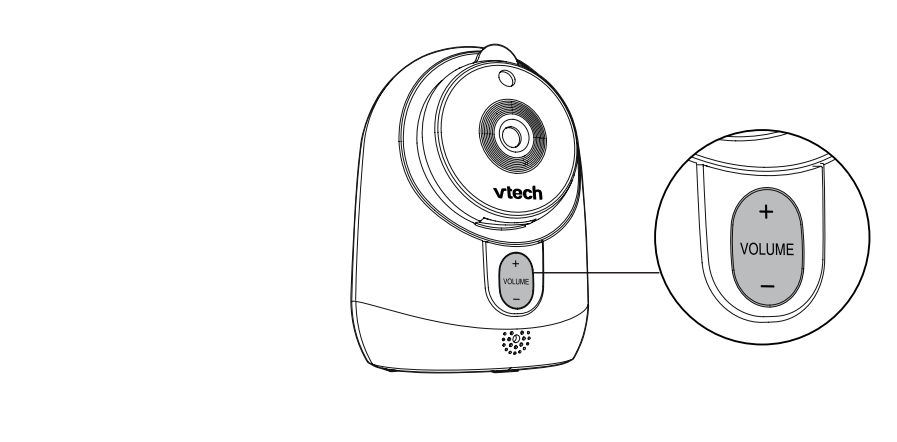
**While in the menu:**

- Press **◀** or **▶** to scroll among the menu options.
- Press **SELECT** or **▲** to enter the desired submenu.
- Press **▲** or **▼** to select an item.
- Press **SELECT** to confirm your selection.
- Press **↶** or **▶** to exit the submenu.



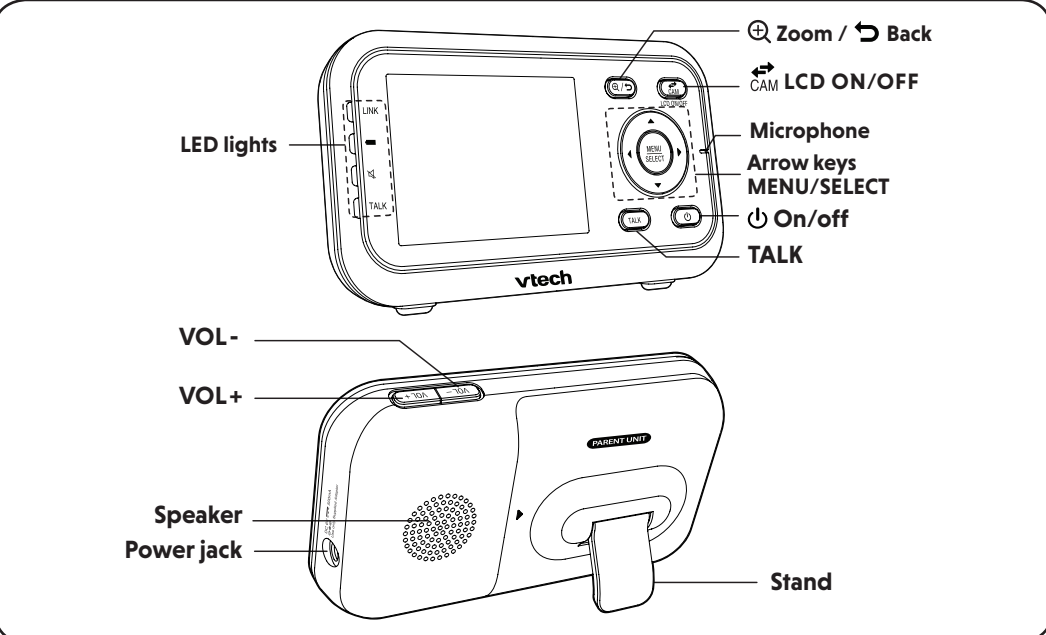
## BASIC OPERATION - BABY UNIT

**Adjust speaker volume**  
Press **+ / VOLUME / -** to adjust your baby unit speaker volume. It determines the lullaby volume and talkback volume transmitted from your parent unit.



Document order number: 96-012516-020-100  
03/19 VM3253-X\_QSG\_V2  
© 2019 VTech Communications, Inc. All rights reserved.  
Specifications are subject to change without notice.

## OVERVIEW - PARENT UNIT



## SOUND SENSITIVITY AND SOUND ACTIVATION

### Adjust sound detection sensitivity

With sound sensitivity setting, you can choose to hear sounds from the baby unit all the time, or to hear sounds that exceed a certain level.

Parent unit setting	What happens...	You may experience...	What you could do...
Speaker volume: Low	Hear all sounds all the time, including background sounds.	Difficulty in hearing your baby's soft sounds if the background sounds are louder.	<ul style="list-style-type: none"> <li>Increase parent unit's speaker volume, and lower sound sensitivity.</li> <li>If you are using a white noise machine or sound machine, set its volume to low, or relocate it to minimize background sounds.</li> </ul>
Sensitivity: Highest [Default]			
Speaker volume: MAX	Only hear sounds that exceed the selected sound sensitivity level.	No sound; or sounds that cut in and out at times as the baby unit may not detect extra soft sounds.	Increase the sound sensitivity, and adjust the volume level if necessary.
Sensitivity: Low / Medium			

For details, please see **Adjust the sound sensitivity of the baby unit** in the User's manual.

### Sound activated screen

When sound activation is on, the parent unit screen stays off to save power when the baby unit detects no sound.

Once the baby unit detects sounds that are louder than the chosen sound sensitivity level, the parent unit screen turns on automatically. It will then turn off again after 50 seconds of no sound detection.

## MOUNT THE BABY UNIT (OPTIONAL)

**NOTE**

- The types of screws and anchors you need depend on the composition of the wall.

- Place the wall mount bracket on a wall and then use a pencil to mark the top hole and the bottom hole as shown. Remove the wall mount bracket and drill two holes in the wall (7/32 inch drill bit).
- Align the wall mount bracket and screws with the holes in the wall as shown. Tighten the screws in the top hole and the bottom hole.
- Insert the screws into the holes and tighten the screws until only 1/4 inch of the screws are exposed.
- Place the baby unit on the wall mount bracket. Tighten the screw into the threaded socket at the bottom to secure the baby unit.
- Adjust the angle of the baby unit camera to your preferred angle.

**OR**

- Place the baby unit on the wall mount bracket. Tighten the screw into the threaded socket at the bottom to secure the baby unit.
- Adjust the angle of the baby unit camera to your preferred angle.

**NOTE**

- Check for reception strength and camera angle before drilling the holes.

Place the baby unit on the wall mount bracket. Tighten the screw into the threaded socket at the bottom to secure the baby unit.

Adjust the angle of the baby unit camera to your preferred angle.

## FOR VM3253-2 ONLY

### Status check - Two baby units

If you are viewing baby unit 1, the **POWER LED** light of baby unit 1 turns on. As baby unit 2 is not being viewed, its **POWER LED** light flashes.

**NOTE**

- If you power on only one baby unit, your parent unit may display and the LINK LED light flashes. Press **CAM** to switch to the baby unit you have powered on.

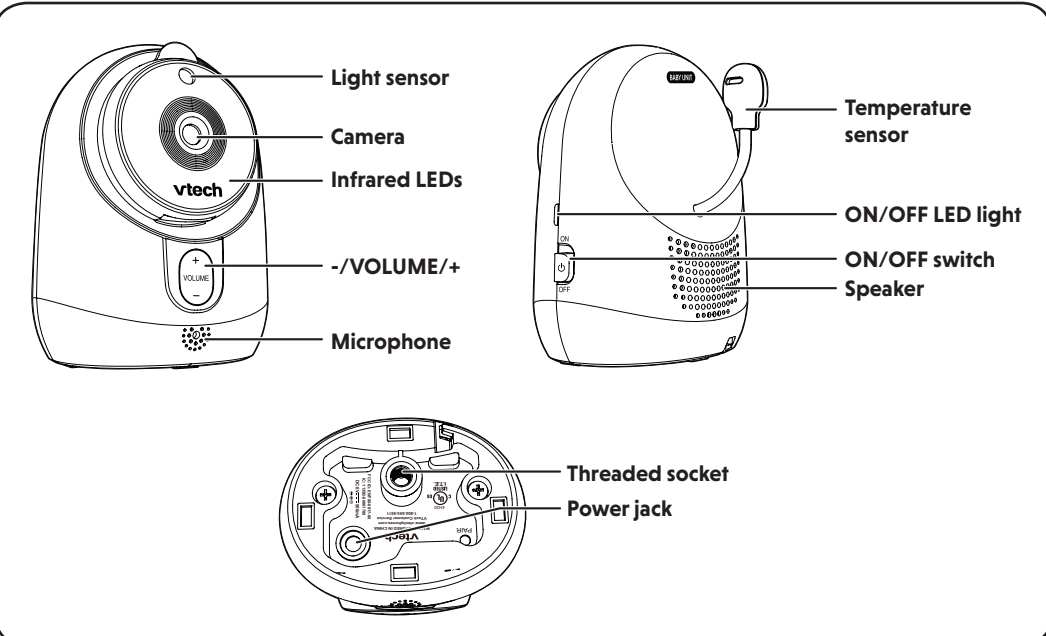
### Change different views - Patrol

Press **MENU** when the parent unit is idle. Press or to choose , then press **SELECT** or . Press or to choose **ON**, then press **SELECT** to confirm your selection.

### Change different views - Single-cam

Press **CAM** to switch to another camera in **SINGLE-CAM** mode.

## OVERVIEW - BABY UNIT



## NIGHT VISION

The baby unit has infrared LEDs that allow you to see your baby clearly at night or in a dark room. When the baby unit being viewed detects low light levels, the infrared LEDs are switched on automatically. The images from the baby unit are in black and white, and appears on the screen.

**NOTES**

- It is normal if you see a short white glare on your parent unit screen as the baby unit is adapting to the dark environment.
- When the infrared LEDs are on, the images are in black and white. This is normal.

**TIP**

- Depending on the surroundings and other interfering factors, like lightings, objects, colors and backgrounds, the display resolution may vary. Adjust the baby unit's angle or place the baby unit at a higher level to prevent glare and blurry display.

## DIM MODE

The dim mode is to help you save the parent unit power. Your parent unit display will dim automatically after 10 minutes of inactivity, in which there is neither key pressed nor alert received from the baby unit.

10 min inactivity

Press any buttons

**NOTE**

- While the screen is dimmed, any keypress or alert message will trigger the screen to return to the preset brightness level. After 10 minutes of inactivity, it will resume to dim mode.