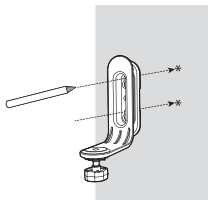




## Mount the baby monitor - Method 2

1



**NOTE** Check for reception strength and camera angle before drilling the holes.

Place the wall mount on a wall and then use a pencil to mark the top and the bottom holes as shown. Remove the wall mount and drill two holes in the wall (7/32" drill bit).

3



Insert the screws into the holes and tighten the screws until only 1/4 inch of the screws are exposed.

2

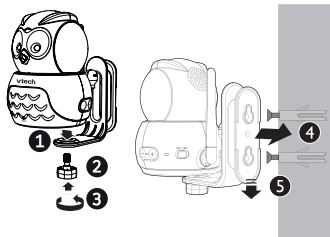


If you drill the holes into a stud, go to step 3.

**-OR-**

If you drill the holes into an object other than a stud, insert the wall anchors into the holes. Tap gently on the ends with a hammer until the wall anchors are flush with the wall.

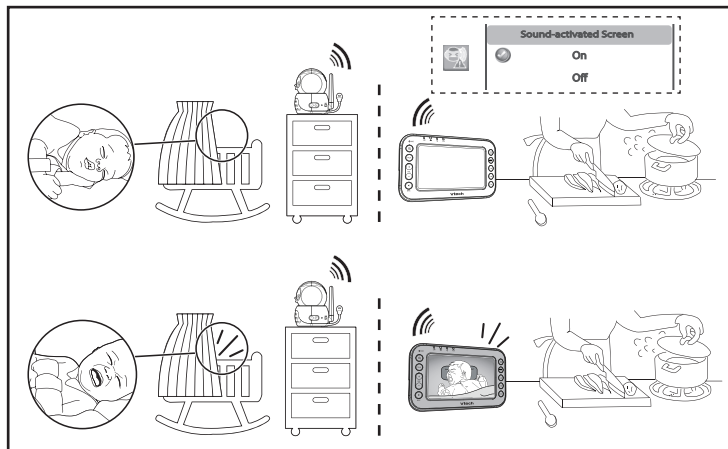
4



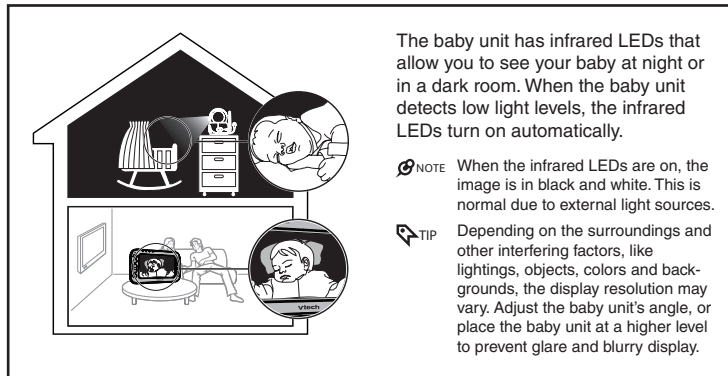
Place the baby unit on the wall mount. Tighten the screw into the threaded socket at the bottom to secure the baby unit. Align the holes on the wall mount with the screws on the wall, and slide the wall mount down until it locks into place.



## Sound activation



## Night vision



The baby unit has infrared LEDs that allow you to see your baby at night or in a dark room. When the baby unit detects low light levels, the infrared LEDs turn on automatically.

**NOTE** When the infrared LEDs are on, the image is in black and white. This is normal due to external light sources.

**TIP** Depending on the surroundings and other interfering factors, like lightings, objects, colors and backgrounds, the display resolution may vary. Adjust the baby unit's angle, or place the baby unit at a higher level to prevent glare and blurry display.

Go to **www.vtechphones.com** to register your product for enhanced warranty support and latest VTech product news.

VM344  
VM344-2  
VM314



**vtech®**

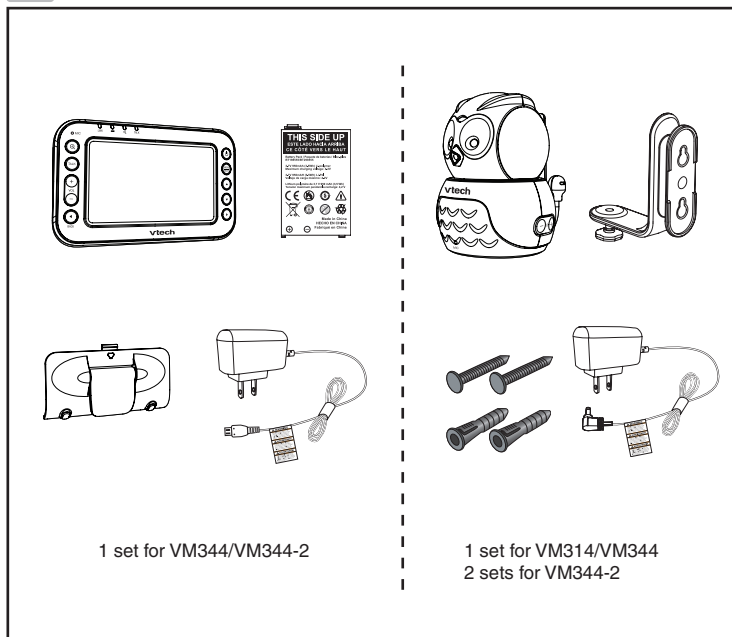
Quick start guide



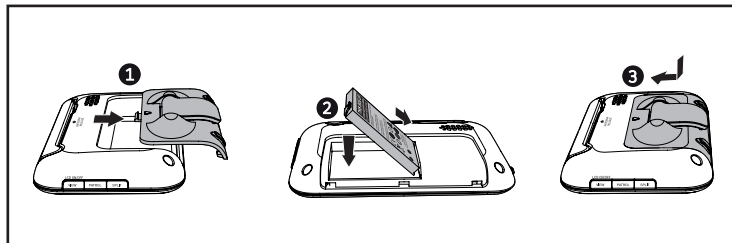
Specifications are subject to change without notice.  
© 2015 VTech Communications, Inc.  
All rights reserved. 11/15. VM344-X-QSG\_V1.0  
Document order number: 96-010955-010-100



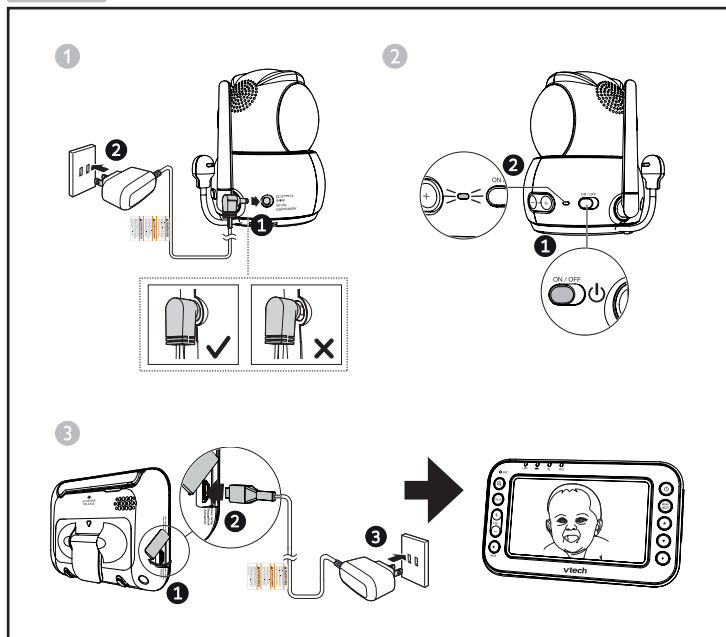
## What's in the box



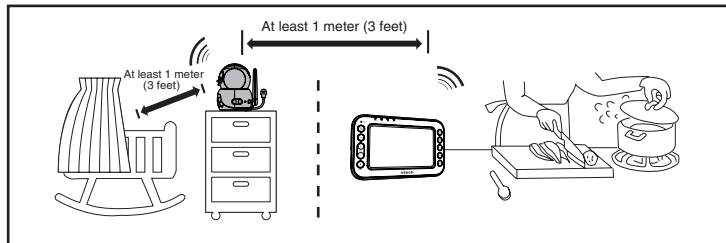
## Install the battery



## Connect and power on



## Place the baby monitor



## Mount the baby monitor - Method 1

