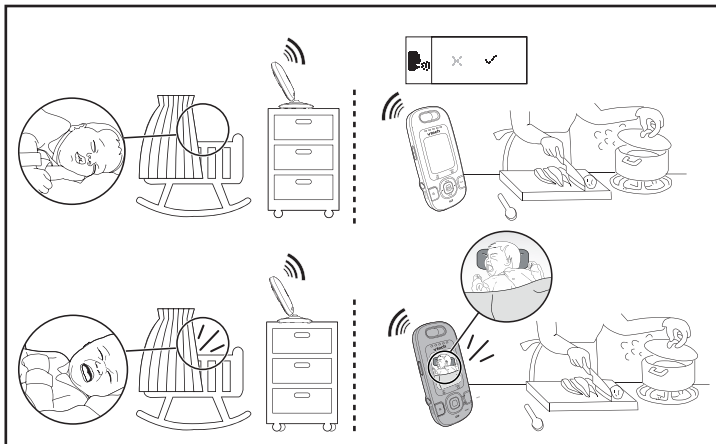
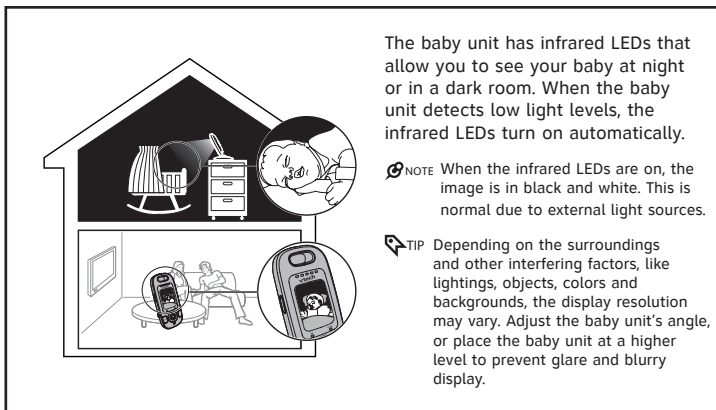




## Sound activation



## Night vision



The baby unit has infrared LEDs that allow you to see your baby at night or in a dark room. When the baby unit detects low light levels, the infrared LEDs turn on automatically.

**NOTE** When the infrared LEDs are on, the image is in black and white. This is normal due to external light sources.

**TIP** Depending on the surroundings and other interfering factors, like lightings, objects, colors and backgrounds, the display resolution may vary. Adjust the baby unit's angle, or place the baby unit at a higher level to prevent glare and blurry display.

Go to [www.vtechphones.com](http://www.vtechphones.com) to register your product for enhanced warranty support and latest VTech product news.

VM312  
VM312-2  
VM302

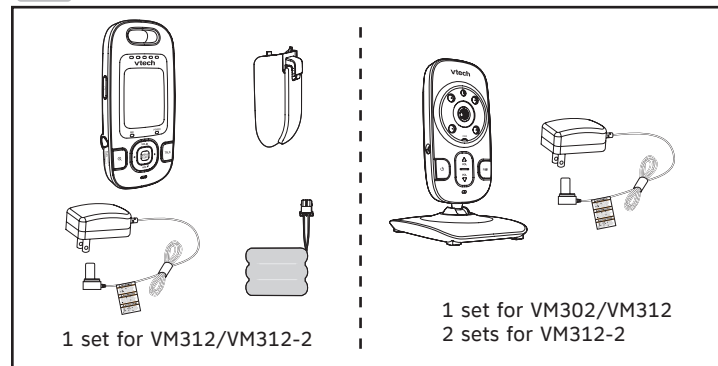


# vtech®

## Quick start guide



## What's in the box



1 set for VM312/VM312-2

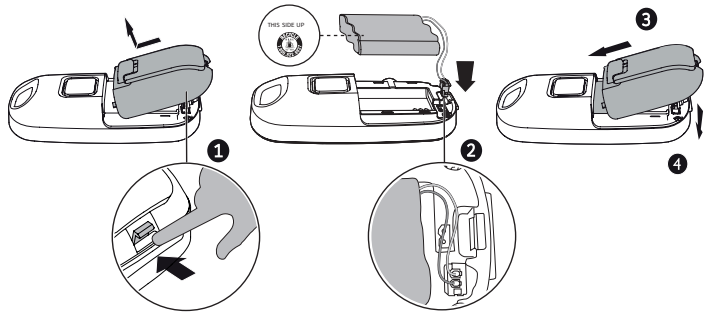
1 set for VM302/VM312  
2 sets for VM312-2



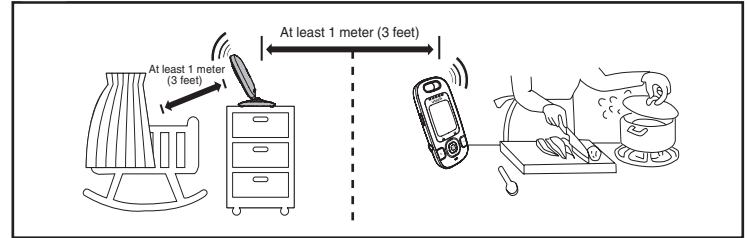
Specifications are subject to change without notice.  
© 2015 VTech Communications, Inc.  
All rights reserved. 01/15 VM312-X\_QSG\_V2.0  
Document order number: 96-009889-020-100



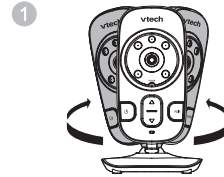
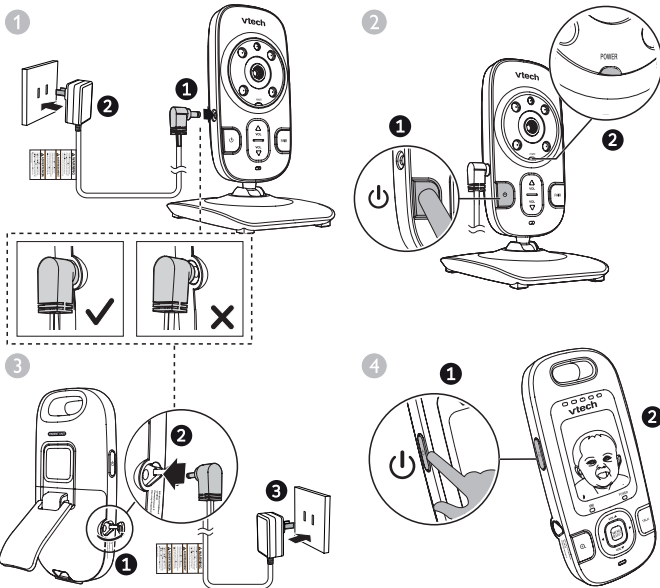
## Install the battery, connect, and power on



## Place the baby monitor

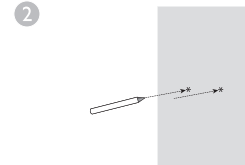


## Mount the baby monitor



1 Pan or tilt to adjust the baby unit angle.

NOTE Check for reception strength and camera angle before drilling the holes.

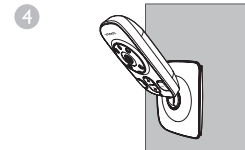


2 Use a pencil to mark two holes in parallel. Make sure they are the same distance apart as the wall mount at the bottom of the baby unit.



3 Drill two holes in the wall (7/32" drill bit). If you drill the holes into a stud, insert the screws into the holes.

Tighten the screws until only 1/4 inch of the screws are exposed.



4 Align the holes on the wall mount with the screws on the wall.

Slide the wall mount down until it locks into place.