



User's manual VM311/VM311-13/VM311-2/ VM311-23

Safe & Sound™ Full Color Video and Audio Monitor



Congratulations

on purchasing your new VTech product. Before using this product, please read **Important safety instructions**.

For support, shopping, and everything new at VTech, visit our website at www.vtechphones.com.

Register online to get an additional 3-month warranty!

Visit www.vtechphones.com.



Registration

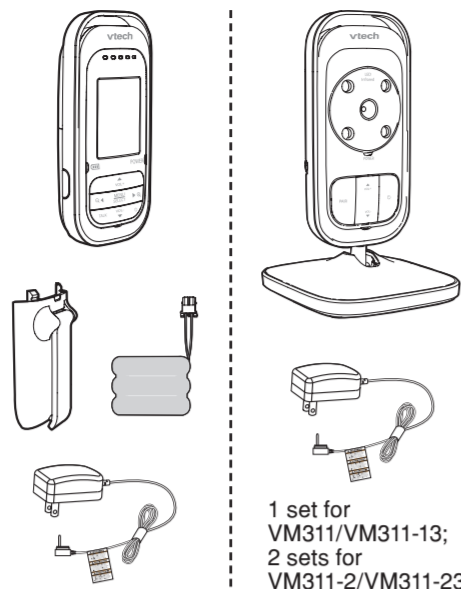
Register your product online for enhanced warranty support.



Product news

Learn about the latest VTech products.

Parts checklist



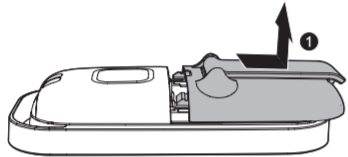
1 set for
VM311/VM311-13;
2 sets for
VM311-2/VM311-23

Install the battery

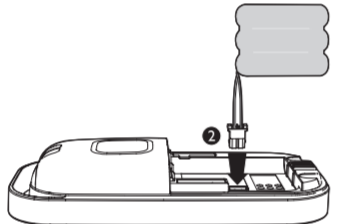
You can power up the parent unit by connecting it to AC power or to the rechargeable battery provided. Even if the parent unit is connected to AC power, we recommend you also install the battery. This guarantees continual operation in case of a power outage.

Install the battery as shown below.

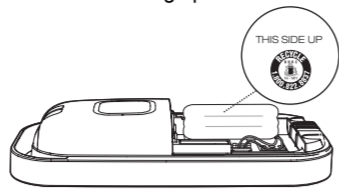
- Slide and lift to open the battery compartment cover.



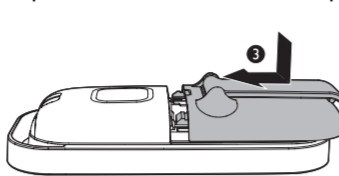
- Plug the battery connector securely into the socket.



Make sure the supplied rechargeable battery with the label **THIS SIDE UP** facing up.



- Align the battery compartment cover flat against the battery compartment, then place down and slide it towards the center of the parent unit until it clicks into place.



Replace the battery

To replace the battery, pull the battery out of the battery compartment and unplug the battery connector from the socket, then follow the steps above to install the battery.



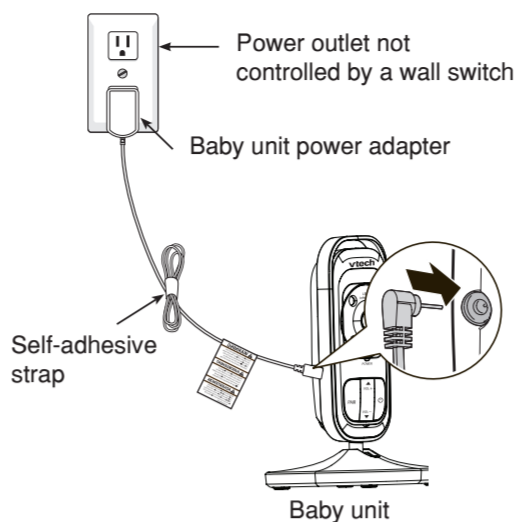
- The operating time for using the rechargeable battery is short. If you want to monitor your baby for a long time, we recommend you connect the parent unit to AC power.
- If the parent unit will not be used for a long time, disconnect and remove the battery to prevent possible leakage.

Connect and charge the battery

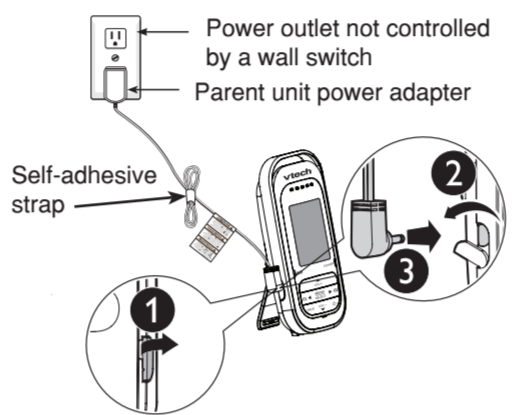


- Use only the battery supplied with this product.
- Use only the parent unit power adapter or the baby unit power adapter supplied with this product.
- The parent unit power adapter and baby unit power adapter are intended to be correctly oriented in a vertical or floor mount position. The prongs are not designed to hold the plug in place if it is plugged into a ceiling, under-the-table or cabinet outlet.
- Make sure the parent unit, the baby unit and the power adapter cord are out of reach of children.

Connect the baby unit



Connect the parent unit



Charge the parent unit battery

Once you have connected the parent unit and installed its battery, **press and hold** to turn it on. The battery icon indicates the battery status (see the following table).



- The parent unit battery is fully charged after 12 hours of continuous charging.
- It takes longer to charge the battery when the parent unit is turned on. To shorten the charging time, turn the parent unit off while charging.
- The standby time varies depending on the sensitivity level you set, your actual use, and the age of the battery.

Battery indicators	Battery status	Action
The battery icon is off and displays.	No battery is installed but operates using AC power, or the battery has been installed incorrectly.	Install the parent unit battery. Charge without interruption (at least 30 minutes).
The screen displays . The light flashes.	The battery has very little charge and may be used for only a short time.	Charge without interruption (about 30 minutes).
The battery icon becomes solid .	The battery is fully charged.	To keep the battery charged, connect it to AC power when not in use.

Before use

You may test the baby monitor before initial use, and at regular times thereafter.

To test your video and audio monitor:

- Place the parent unit and the baby units in the same room to test the product. Make sure the baby units are at least 3 feet away from the parent unit.
- Press and hold** on the baby units until the **POWER** light turns on.
- Press and hold** on the parent unit until the **POWER** light turns on.



If both units are not connected, the parent unit displays while searching for a baby unit. If no baby unit is found after a while, it displays .

Positioning the baby monitor

Place the parent unit within the operating range of the baby unit. We recommend the parent unit is at least 3 feet away from the baby unit to avoid audio feedback. If you still experience audio feedback, move the parent unit and the baby unit farther apart.



For better image quality, do not place the baby unit too far away from your baby.



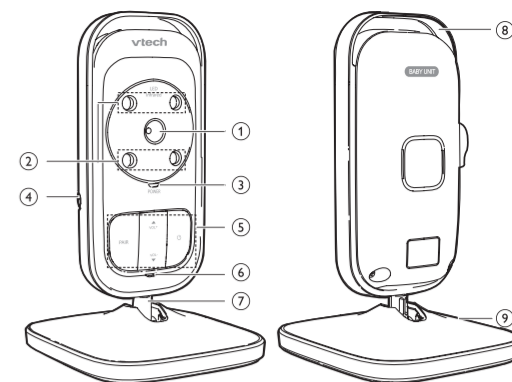
For desktop usage and/or wall mounting the baby unit, you can refer to **Installation guide**.

Operating range

The operating range of the baby monitor is up to 1,000 feet outdoors or 150 feet indoors. The actual operating range may vary depending on the environmental conditions and other interferences such as walls, doors and other obstructions.

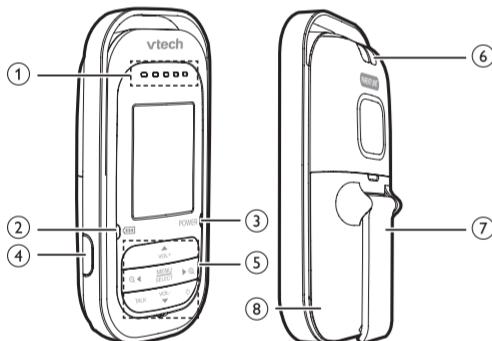
Overview

Baby unit overview



1	Camera
2	Infrared LEDs Backup light for night vision.
3	POWER on/off indicator <ul style="list-style-type: none"> On when the baby unit is powered on and currently linked to parent unit. Flashes when the baby unit is not linked to a parent unit; or the pairing process is in progress; or the parent unit is not viewing this baby unit.
4	Power jack
5	Control key panel <ul style="list-style-type: none"> ▲/VOL+ Press to increase the listening volume. ▼/VOL- Press to decrease the listening volume. PAIR Press and hold to pair to the parent unit. ⏻ (On/Off) Press and hold to turn on or off.
6	Microphone
7	Stand Tilt to adjust the camera angle.
8	Rim
9	Base

Parent unit overview



1	Visual sound indicator The visual sound indicator has two functions. One is to show the sound level detected by the baby unit. The other one is to show the volume level during speaker volume setting. Sound level detected by the baby unit <ul style="list-style-type: none"> One to three green lights indicate a moderate sound level detected by the baby unit. Additional red lights indicate a higher sound level detected by the baby unit (e.g. baby crying loudly). Speaker volume level <ul style="list-style-type: none"> One to three green lights indicate Level 1 to Level 3 of the speaker volume setting. Additional red lights indicate Level 4 to Level 5 of the speaker volume setting.
2	Battery level indicator <ul style="list-style-type: none"> Light On when the parent unit battery is being charged. Light Flashes when the parent unit battery is low and needs charging. Light Off when the parent unit battery is fully charged, or when no battery is installed.
3	POWER on/off indicator <ul style="list-style-type: none"> On when the parent unit is turned on. Flashes when in pairing process, or when connecting to baby unit while the baby unit is not available.
4	Power jack

5 Control key panel

- ▲/VOL+**
 - Press to increase the speaker volume.
 - While in the menu, press to scroll up.
 - While viewing a zoomed image, **press and hold** to move the image upward.

MENU/SELECT

- Press to enter the menu.
- While in a menu, press to choose an item, or save a setting.

▼/VOL-

- Press to decrease the speaker volume.
- While in the menu, press to scroll down.
- While viewing a zoomed image, **press and hold** to move the image downward.



- While in a menu, press to choose the option on the left side.
- While viewing a zoomed image, press to zoom out; or **press and hold** to move the image leftward.



- While in a menu, press to choose the option on the right side.
- While viewing image, press to zoom in.
- While viewing a zoomed image, **press and hold** to move the image rightward.

TALK

While viewing image, **press and hold** to talk to the selected baby unit.

⏻ (On/off)

- Press and hold** to turn on or off.
- Press to turn on or off the screen.

6 Slot for portable use

7 Stand

8 Battery compartment cover

Parent unit display icons

	Connection status <ul style="list-style-type: none"> displays when strong signal strength is detected between the baby unit and the parent unit. displays when moderate signal strength is detected between the baby unit and the parent unit. displays when the link between the baby unit and the parent unit is lost. displays when the parent unit is searching for a baby unit.
	Current view status <ul style="list-style-type: none"> Display the number of the baby unit that is being viewed.
	Zoom <ul style="list-style-type: none"> Display when the camera at the baby unit has zoomed in.
	Volume off <ul style="list-style-type: none"> Display when the volume is turned off.
	Sound activation <ul style="list-style-type: none"> Display when the sound activation is on. The parent unit screen automatically goes on when the baby unit detects a sound in the baby room.
	Battery status <ul style="list-style-type: none"> animates when the battery is charging. displays solid when the battery is fully charged. displays when the battery is low and needs charging. displays when no battery is installed but operates using AC power, or the battery has been installed incorrectly.

Parent unit main menu icons

	Camera selection <ul style="list-style-type: none"> You can select the screen to view images from a particular baby unit, or view all baby units in Patrol Mode.
	Brightness <ul style="list-style-type: none"> You can change the brightness of the screen.
	Sensitivity <ul style="list-style-type: none"> You can use the parent unit to adjust the microphone sensitivity of the baby unit. The higher the sensitivity level, the more sounds it detects in your baby's room.

	Sound activation <ul style="list-style-type: none"> Automatically turns on the parent unit screen when a sound is detected in your baby's room. When no sound is detected, the screen is off to save power.
	Pairing <ul style="list-style-type: none"> The baby units and parent unit provided are already paired. You can add or replace baby units (VM310/VM310-13 purchased separately) to your baby monitor system.

Using the baby monitor

Power on or off the baby unit

- Press and hold** to turn on the baby unit. The **POWER** light turns on.
- Press and hold** again to turn off the baby unit. The **POWER** light turns off.

Power on or off the parent unit

- Press and hold** to turn on the parent unit. The screen turns on.
- Press and hold** again to turn off the parent unit. The screen turns off.

Turn on or off the parent unit screen

If you want to hear sound from baby unit without watching the screen, you can choose to turn off the screen to save power. You can turn it back on later when necessary.

- Press on the parent unit at any time.

Adjust the speaker volume for baby unit

You can adjust the speaker volume.

- Press **▲/VOL+** or **▼/VOL-** on the baby unit at any time.

Adjust the speaker volume for parent unit

You can adjust the speaker volume from **Volume 1** to **Volume 5**, or turn it off.

- Press **▲/VOL+** or **▼/VOL-** on the parent unit when it is not in use.

When the speaker volume is set to off, the screen displays .

Adjust the LCD brightness of the parent unit

You can adjust the brightness of the parent unit screen from **Level 1** to **Level 5**. The LCD brightness is preset to **Level 3**.

- Press **MENU/SELECT** when the parent unit is not in use.

- Press **▼** or **▲** to scroll to .
- Press **◀** or **▶** to adjust the brightness.
- Press **MENU/SELECT** to confirm your selection.

Adjust the sound sensitivity of the baby unit

You can use the parent unit to change the sound sensitivity level of the baby units. The higher the sound sensitive is set, the more sensitive the baby unit is in detecting sounds for transmitting to the parent unit.

Sound sensitivity table for reference

Icon display	Sensitivity	Description
	High sensitivity	The parent unit speaker is constantly on, and you will hear all sounds from your baby's room.
		The parent unit speaker turns on for soft babbling and louder sounds from your baby. It remains quiet when your baby sleeps soundly.
		The parent unit speaker turns on for loud babbling and louder sounds from your baby. It remains quite when your baby makes soft sounds.
		The parent unit speaker turns on for crying and louder sounds from your baby. It remains quiet when your baby makes soft sounds.
	Low sensitivity	The parent unit speaker turns on for loud crying or screeching sounds from your baby. It remains quiet when your baby makes soft sounds.

- Press **MENU/SELECT** when the parent unit is not in use.
- Press **▼** or **▲** to scroll to .
- Press **◀** or **▶** to adjust the sensitivity level.
- Press **MENU/SELECT** to confirm your selection.



You can adjust the baby unit placement to improve the sound detection.

Turn on or off the sound activation

The parent unit continuously monitors the sound level in your baby's room. When the sound activation mode is on, the parent unit screen turns on when the baby unit detects a sound.

As long as no sound is detected within 50 seconds, the parent unit screen is off to save power. When your baby starts to cry, the sound activation triggers the parent unit screen automatically turns on.

- Press **MENU/SELECT** when the parent unit is not in use.
- Press **▼** or **▲** to scroll to .
- Press **◀** or **▶** to select to turn on, or to turn off sound activation.
- Press **MENU/SELECT** to confirm your selection.



- If you mute the speaker while sound activation is on, then you hear a beep sound whenever the screen turns on.
- If you want to turn on the parent unit screen continuously while the sound activation is on, then set the sound sensitivity to .

Select the camera

You can select the screen to view images from a particular baby unit, or view all baby units in Patrol Mode. If you select Patrol Mode to view the images, the screen switches to view another baby unit automatically after some time. The switching is in chronological order: to .

- Press **MENU/SELECT** when the parent unit is not in use.
- Press **▼** or **▲** to scroll to .
- Press **◀** or **▶** to select the desired baby unit (1, 2, 3 or 4) or Patrol Mode (.
- Press **MENU/SELECT** to confirm your selection.

Zoom

You can zoom in or out while viewing image from baby unit.

- Press to zoom in.
- Press and hold** **▲**, **▼**, **◀** or **▶** to move the zoomed image upward, downward, leftward or rightward correspondingly.
- Press to zoom out.

Talk function

You can use the **TALK** function of the parent unit to talk and comfort your baby.

- Press and hold** **TALK** when the parent unit is viewing particular baby unit. Speak towards the microphone on the parent unit. Your voice is broadcast to the baby unit.

Night vision

The baby unit has infrared LEDs that allow you to see your baby clearly at night or in a dark room. When the baby unit detects low light levels, the infrared LEDs are switched on automatically.



When the infrared LEDs are on, the image is in black and white. This is normal due to external light sources.



Depending on surroundings and other interference factors, like a night light being too close to the baby unit or white furniture blocking the view, the display resolution may vary. Place the baby unit at a higher level to prevent glare and blurry display.

Pair and replace extra new baby unit (VM310/VM310-13)

The baby units and parent unit provided are already paired. You can add or replace any baby units (VM310/VM310-13 purchased separately) to your video and audio monitor system.



You can pair a maximum of four baby units to your parent unit. Each new baby unit must be paired to the parent unit before use.

To pair and replace a baby unit:

- Press **MENU/SELECT** when the parent unit is not in use.
- Press **▼** or **▲** to choose .
- Press **◀** or **▶** to choose a desired baby unit slot, then press **MENU/SELECT**. The screen displays .



If you choose an occupied baby unit slot, the new baby unit will replace the existing baby unit.

- Turn on the new baby unit, and then immediately **press and hold** **PAIR** until the **POWER** light turns on.

When pairing is successful, the screen displays , and then the image from the newly paired baby unit.



- If pairing fails, the screen displays . Try the pairing process again.
- Only one baby unit can be paired at a time.

To unpair a baby unit:



Make sure you power on the baby unit and the parent unit before unpairing the baby unit.

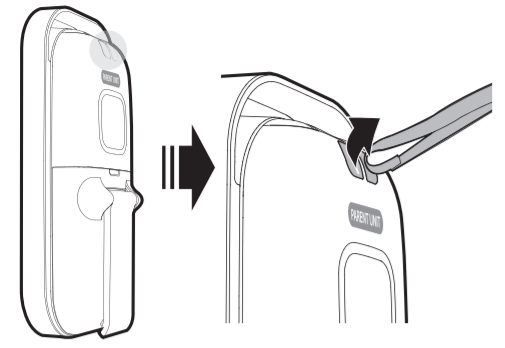
- Press **MENU/SELECT** when the parent unit is not in use.
- Press **▼** or **▲** to scroll to .
- Press **◀** or **▶** to select the desired baby unit (1, 2, 3 or 4).
- Press **and hold** **TALK** until and display.
- Press **◀** or **▶** to select , or to confirm the unpair process.
- Press **MENU/SELECT** to confirm your selection.

When unpairing is successful, the **POWER** light on the selected baby unit flashes. The parent unit displays for a while, and then the image from the baby unit previously viewing.

Portable use of parent unit (optional)

NOTE

Sling is not included. You may need to buy a sling for portable usage.



- Make sure battery is installed and charged. Unplug the power adaptor.
- Pinch the end of the sling and insert it into the slot on the top of the parent unit.
- Insert the one end of the sling into the other end of the sling, and fasten it.

General product care

To keep this product working well and looking good, follow these guidelines:

- Avoid putting it near heating appliances and devices that generate electrical noise (for example, motors or fluorescent lamps).
- DO NOT expose it to direct sunlight or moisture.
- Avoid dropping the product or treating it roughly.
- Clean with a soft cloth.
- DO NOT immerse the parent unit and the baby unit in water and do not clean them under the tap.
- DO NOT use cleaning spray or liquid cleaners.
- Make sure the baby unit and parent unit are dry before you connect them to the mains again.

Storage

When you are not going to use the baby monitor for some time, remove the rechargeable battery from the parent unit. Store the parent unit, the baby unit and the adapters in a cool and dry place.

Parent unit

Parent unit operation

This baby monitor meets the California Energy Commission (CEC) regulations for energy consumption. Your baby monitor is set up to comply with the energy-conserving standards right out of the box.

Follow the instructions to install and charge the battery. The CEC battery charging testing mode is activated while charging.

Even if the parent unit is paired to baby units, the CEC battery charging testing mode is activated while it is powered off and charging.

For cETL compliance only

Mesures de sécurité importantes

Lorsque vous utilisez votre appareil, vous devriez toujours suivre certaines mesures de précaution de base afin de réduire les risques d'incendie, d'électrocution et de blessures corporelles, dont ceux qui suivent :

- Observez toutes les instructions et mises en garde inscrites sur l'appareil.
- L'installation par un adulte est requise.
- Ce produit a été conçu pour être un dispositif d'appoint seulement. Il n'est pas le remplacement d'une supervision responsable et adéquate par un adulte et ne devrait pas être utilisé comme telle.
- Ce produit n'est pas conçu pour être utilisé en tant que moniteur médical.
- N'utilisez pas cet appareil près de l'eau ni de toute autre source d'humidité, par exemple, près d'une baignoire, cuve à lessive, évier de cuisine, dans un sous-sol humide ni près d'une piscine, dans un soussoil humide ou une douche.
- MISE EN GARDE:** Il peut y avoir un risque d'explosion si vous utilisez le mauvais type de piles pour l'unité du parent. N'utilisez que le bloc-piles rechargeable inclus ou le bloc-piles de rechange (BT185645/BT285645). N'incinérez pas les piles. Celles-ci risqueraient d'exploser. Jetez les piles usées selon les renseignements suivant **le sceau du RBRC®**.
- N'utilisez que les adaptateurs inclus avec ce produit. L'utilisation d'un adaptateur dont la polarité ou la tension serait inadéquate risque d'endommager sérieusement le produit et mettre votre sécurité en péril. Adaptateur de l'unité du bébé : Entrée 100-240V CA 150mA 50/60 Hz; Sortie : 6 V CC 600 mA Adaptateur de l'unité du parent : Entrée 100-240V CA 150mA 50/60 Hz; Sortie : 6 V CC 600 mA
- Lorsqu'ils sont branchés dans une prise de courant, les adaptateurs secteur ont été conçus pour être orientés correctement, soit à la

Parent unit accessories

Parent unit operation

Parent unit operation

Parent unit operation

Parent unit operation

Parent unit operation

Parent unit operation

Parent unit operation

Parent unit operation

Parent unit operation

Parent unit operation

Parent unit operation

Parent unit operation

Parent unit operation

Parent unit operation

Parent unit operation

Parent unit operation

Parent unit operation

Parent unit operation

Parent unit operation

Parent unit operation

Parent unit operation

Parent unit operation

Parent unit operation

Frequently asked questions

Frequently asked questions

Frequently asked questions

Frequently asked questions

Frequently asked questions

Frequently asked questions

Below are the questions most frequently asked about the baby monitor. If you cannot find the answer to your question, contact customer service by visiting our website at www.vtechphones.com or calling

1 (800) 955-9511.

Why does the baby monitor not respond normally?	Try the following (in the order listed) for common cure: <ol style="list-style-type: none">Disconnect the power to the baby units and the parent unit. Remove the batteries in the parent unit. Then install the batteries again. Wait a few minutes before connecting power back to the baby units and the parent unit. Turn on the baby units and the parent unit. Wait for the parent unit to synchronize with the baby units. Allow up to one minute for this to take place.
Why don't the power-on light of the baby unit and parent unit go on when I switch on the units?	Perhaps the rechargeable battery of the parent unit is empty and the parent unit is not connected to the mains. Insert the appliance plug into the parent unit and put the adapter in a wall socket. Then press O to switch on the parent unit and to establish connection with the baby unit. <p>Perhaps the baby unit is not connected to the mains. Connect the baby unit to the mains. Then set ON/OFF switch to ON to switch on the baby unit and to establish connection with the parent unit.</p>
Why is my screen in black and white?	The screen is in black and white during nighttime or in a dark room. This is normal due to external light sources.
Why does the baby monitor produce a high-pitched noise?	The units may be too close to each other. Move the parent unit and the baby unit at least 1 metre/3 feet away from each other.
Why does the parent unit react too quickly to other sounds?	The baby unit also detects other sounds than those of your baby. Adjust the sensitivity level to a lower level or adjust the speaker volume on the parent unit.

Parent unit operation

Parent unit operation

Parent unit operation

Parent unit operation

Parent unit operation

Parent unit operation

Parent unit operation

Parent unit operation

Parent unit operation

Parent unit operation

Parent unit operation

Parent unit operation

Parent unit operation

Parent unit operation

Parent unit operation

Parent unit operation

Parent unit operation

Parent unit operation

Parent unit operation

Parent unit operation

Parent unit operation

Parent unit operation

Parent unit operation

Parent unit operation

Parent unit operation

Parent unit operation

Parent unit operation

Parent unit operation

Parent unit operation

Parent unit operation

Parent unit operation

Parent unit operation

Parent unit operation

Parent unit operation

Parent unit operation

Parent unit operation

Parent unit operation

Parent unit operation

Parent unit operation

Parent unit operation

Parent unit operation

Parent unit operation

Parent unit operation

Parent unit operation

Parent unit operation

Parent unit operation

Parent unit operation

Parent unit operation

Parent unit operation

Parent unit operation

Parent unit operation

Parent unit operation

Frequently asked questions

Frequently asked questions

Frequently asked questions

Frequently asked questions

Frequently asked questions

Frequently asked questions

Frequently asked questions

Frequently asked questions

Frequently asked questions

Frequently asked questions

Frequently asked questions

Frequently asked questions

Frequently asked questions

Frequently asked questions

Frequently asked questions

Frequently asked questions

Frequently asked questions

Frequently asked questions

Frequently asked questions

Frequently asked questions

Frequently asked questions

Frequently asked questions

Frequently asked questions

Frequently asked questions

Frequently asked questions

Frequently asked questions

Frequently asked questions

Frequently asked questions

Frequently asked questions

Frequently asked questions

Frequently asked questions

Frequently asked questions

Frequently asked questions

Frequently asked questions

Frequently asked questions

Frequently asked questions

Frequently asked questions

Frequently asked questions

Frequently asked questions

Frequently asked questions

Parent unit operation

Parent unit operation

Parent unit operation

Parent unit operation

Parent unit operation

Parent unit operation

Parent unit operation

Parent unit operation

Parent unit operation

Parent unit operation

Parent unit operation

Parent unit operation

Parent unit operation

Parent unit operation

Parent unit operation

Parent unit operation

Parent unit operation

Parent unit operation

Parent unit operation

Parent unit operation

Parent unit operation

Parent unit operation

Parent unit operation

Parent unit operation

Parent unit operation

Parent unit operation

Parent unit operation

Parent unit operation

Parent unit operation

Parent unit operation

Parent unit operation

Parent unit operation

Parent unit operation

Parent unit operation

Parent unit operation

Parent unit operation

Parent unit operation

Parent unit operation

Parent unit operation

Parent unit operation

Parent unit operation

Parent unit operation

Parent unit operation

Parent unit operation

Parent unit operation

Parent unit operation

Parent unit operation

Parent unit operation

Parent unit operation

Parent unit operation

Parent unit operation

Parent unit operation

Parent unit operation

Parent unit operation

Parent unit operation

Parent unit operation

Parent unit operation

Parent unit operation

Parent unit operation

Parent unit operation

Parent unit operation

Parent unit operation

Parent unit operation

Parent unit operation

Parent unit operation

Parent unit operation

Parent unit operation

Parent unit operation

Parent unit operation

Parent unit operation

Parent unit operation

Parent unit operation

Parent unit operation

Parent unit operation

Parent unit operation

Parent unit operation

Parent unit operation

Parent unit operation

Parent unit operation

Parent unit operation

Parent unit operation

Parent unit operation

Parent unit operation

Parent unit operation

Parent unit operation

Parent unit operation

Parent unit operation

Parent unit operation

Parent unit operation

Parent unit operation

Parent unit operation

Parent unit operation

Parent unit operation

Parent unit operation

Parent unit operation

Parent unit operation

Parent unit operation

Parent unit operation

Parent unit operation

Parent unit operation

Parent unit operation

Parent unit operation

Parent unit operation

Parent unit operation

Parent unit operation

Parent unit operation

Parent unit operation

Parent unit operation

Parent unit operation

Parent unit operation