
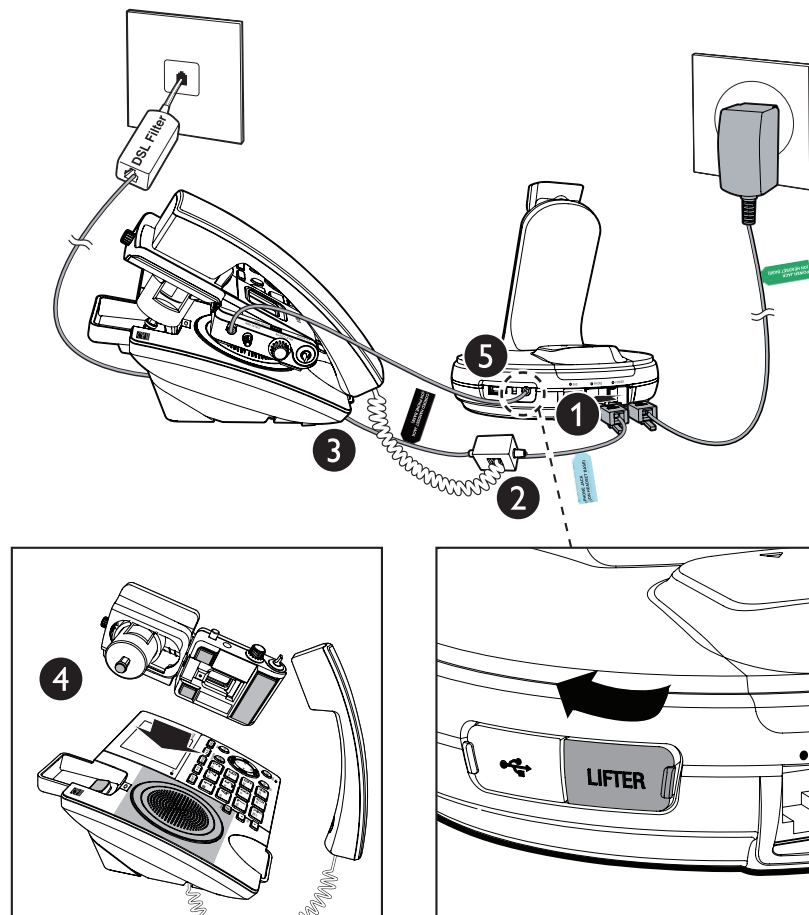


## Option 3: Connect to a traditional corded phone with Lifter

Make sure the headset battery is well charged (with headset LED in purple) or fully charged (with headset LED in blue).

1. Plug the end of the corded phone connection cable labelled **PHONE JACK (ON HEADSET BASE)** into the ● **PHONE** jack (blue dot) at the rear of the headset base.
2. Plug the curly handset cord of the corded phone into the adapter jack at the center of the corded phone connection cable.
3. Plug the end of the corded phone connection cable labelled **CORDED HANDSET JACK (ON PHONE BASE)** into the corded handset jack on the corded phone.
4. Install the lifter on your telephone.
  - a) Look at the space underneath the corded handset. If there is a speaker, the lifter should be centered over the speaker. If there is no speaker, the lifter should be centered within the space.
  - b) Make sure the switch hook is pressed down. Check if the lifter arm is raised above the switch hook of the telephone base by pressing  on the headset to take the line.
  - c) Peel off the protective strips from the adhesive tape at the lifter.
  - d) Carefully place the lifter in the desired position and press down.
5. Flip open the **LIFTER** jack cover at the rear of the headset base. Plug the end of the lifter control cable into the **LIFTER** jack.
6. Read the following two pages to adjust the lifter's positions and audio options before you install the corded handset lifter on the corded phone.




### To test the headset and lifter after connection:

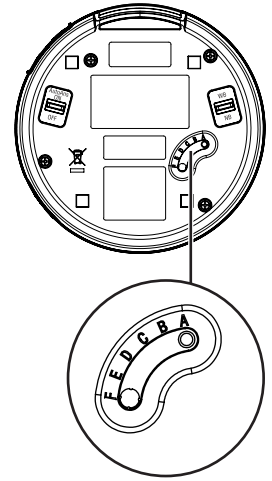
Press the  **ON/OFF** button on headset. The lifter's switch hook presser rises and releases the switch hook. You hear a dial tone in the headset earpiece.

## Adjust the corded handset audio

After you have connected the headset base to your corded phone, you may need to adjust the corded handset audio switch at the bottom of the headset base for optimal sound quality.

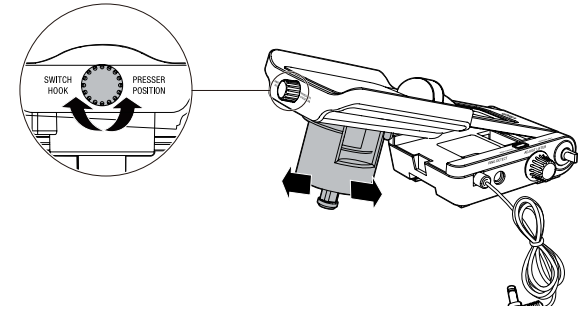
### To adjust the corded handset audio:

- Lift the corded handset and then press  button on the headset to check for a dial tone. If there is no dial tone or the dial tone is unclear, slide the corded handset audio switch at the bottom of the headset base from **A** to **F** until the dial tone is clear.



## Adjust the switch hook presser position

Turn the knob to move the switch hook presser until it is lined up with your telephone switch hook.

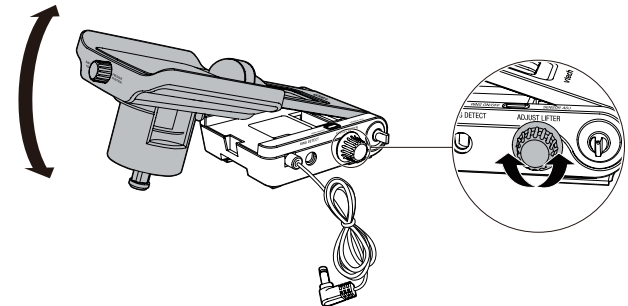


## Adjust the height of the lifter arm

Turn the **ADJUST LIFTER** knob to change the height of the lifter arm.

When in the raised position, the arm should release the switch hook so you can hear a dial tone.

When lowered, the arm should hold the switch hook down so you cannot hear a dial tone.



## Install the auxiliary ring detector (optional)

---

The internal or auxiliary ring detector detects the telephone ringer and sends a ring tone to the headset earpiece.


If you installed the lifter over the top of the corded phone speaker, the internal ring detector will recognize when the phone rings. However, if your corded phone speaker is located elsewhere on the phone, stick the auxiliary ring detector to the speaker.

1. Insert the auxiliary ring detector plug into the **RING DETECT** jack on the lifter.
2. Remove the protective strip from the adhesive tape on the auxiliary ring detector.
3. Stick the auxiliary ring detector to the center of the corded phone speaker.

## Ring detector on/off

---

When the ring detector detects an incoming call, it sends a ring tone to the headset earpiece.

- Press the **RING ON/OFF** button on the lifter to turn the ring detector on or off. The **STATUS** light is blue when the ring detector is turned on. The **STATUS** light is red when the ring detector is turned off.
- When the ring detector is turned off, it does not send a ring tone to the headset. The  LED light on the headset does not flash when there is an incoming call. The Auto answer feature will be disabled, even if the **AutoAns** knob is slid to **ON**.



### NOTE:

- When you are using the speakerphone of your telephone, the ring detector may send a ring tone to the headset. If you do not want the headset to ring, press the **RING ON/OFF** button to turn the ring detector off. After the call, you can press the **RING ON/OFF** button again to turn the ring detector back on.

## Adjust the sensitivity level

---

The default setting of the ring detector works with most corded telephones. However, the ring detector might need some adjustments if the ring tone level of your corded phone is too soft.

### To adjust ring detector sensitivity while the phone is ringing:

- Turn the **SENSOR ADJ** knob clockwise to increase the sensitivity.
- Turn the **SENSOR ADJ** knob counterclockwise to decrease the sensitivity.

### When the ring detector detects the telephone ringer correctly:

- The **STATUS** light on the lifter flashes quickly when the telephone rings.
- The detector sends the ring tone to the headset earpiece.

