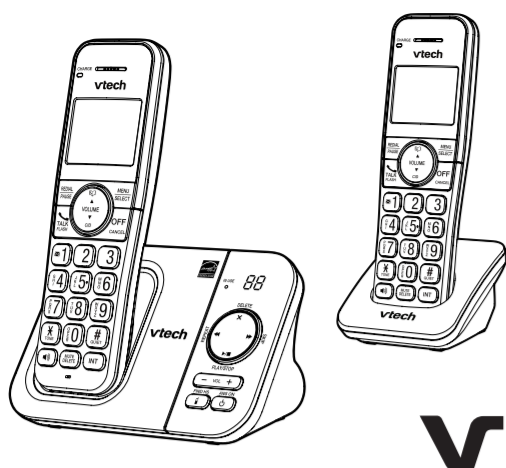


Scan the QR code for support information



VG232-X (US)

VG232-X (CA)



VG232 VG232-2 VG232-3 VG232-4 VG232-5

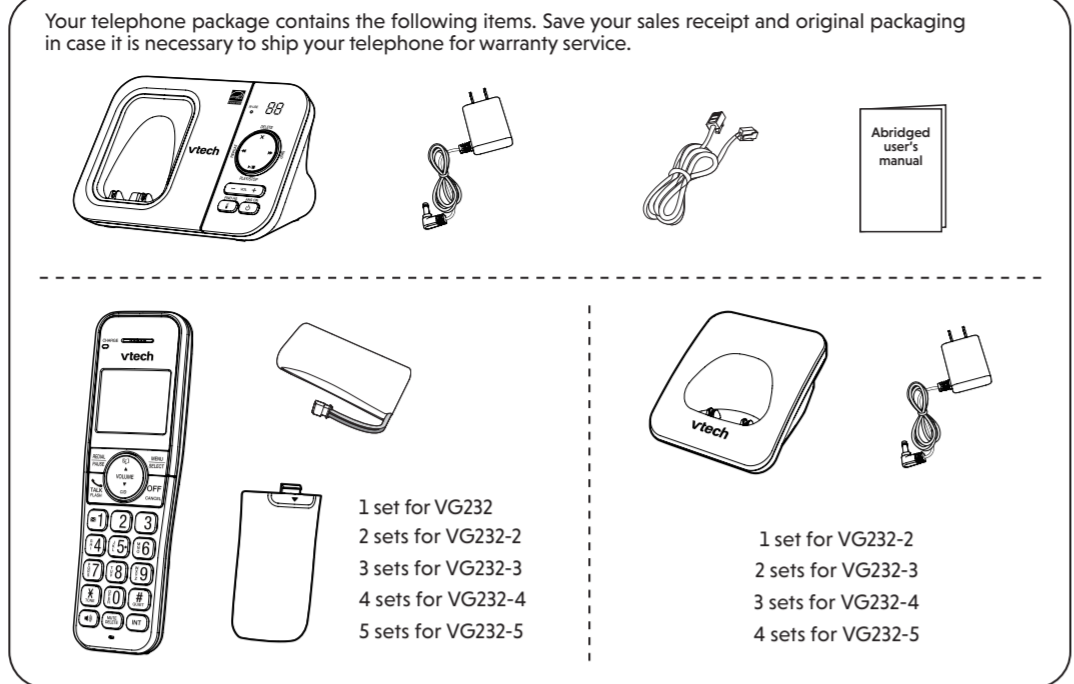
vtech

Abridged user's manual

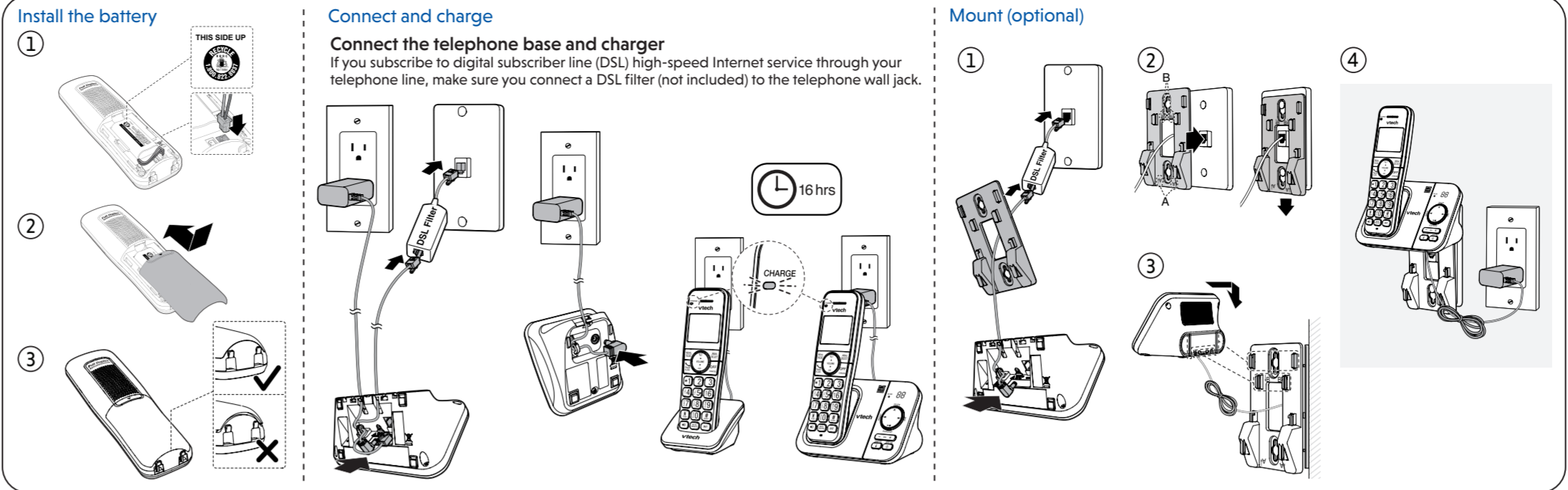
IMPORTANT SAFETY INSTRUCTIONS

- When using your telephone equipment, basic safety precautions should always be followed to reduce the risk of fire, electric shock and injury, including the following:
1. Read and understand all instructions.
2. Follow all warnings and instructions marked on the product.
3. Use only with UL listed Bluetooth devices.
4. Unplug this product from the wall outlet before cleaning. Do not use liquid or aerosol cleaners. Use a damp cloth for cleaning.
5. CAUTION: Do not install the telephone base at a height above 2 meters.
6. Do not use this product near water such as near a bath tub, wash bowl, kitchen sink, laundry tub or a swimming pool, or in a wet basement or shower.
7. Do not place this product on an unstable table, shelf, stand or other unstable surfaces.
8. Avoid placing the telephone system in places with extreme temperature, direct sunlight, or other electrical devices. Protect your phone from moisture, dust, corrosive liquids and fumes.
9. Slots and openings in the back or bottom of the telephone base and handset are provided for ventilation. To protect them from overheating, these openings must not be blocked by placing the product on a soft surface such as a bed, sofa or rug. This product should never be placed near or over a radiator or heat register. This product should not be placed in any area where proper ventilation is not provided.
10. This product should be operated only from the type of power source indicated on the marking label. If you are not sure of the type of power supply in your home or office, consult your dealer or local power company.
11. Do not allow anything to rest on the power cord. Do not install this product where the cord may be walked on.
12. Never touch objects of any kind into this product through the slots in the telephone base or handset because they may touch dangerous voltage points or create a short circuit. Never spill liquid of any kind on the product.
13. To reduce the risk of electric shock, do not disassemble this product, but take it to an authorized service facility. Opening or removing parts of the telephone base or handset other than specified access doors may expose you to dangerous voltages or other risks. Incorrect reassembly can cause electric shock when the product is subsequently used.
14. Do not overload wall outlets and extension cords.
15. Unplug this product from the wall outlet and refer servicing to an authorized service facility under the following conditions:
- When the power supply cord or plug is damaged or frayed.
- If liquid has been spilled onto the product.
- If the product has been exposed to rain or water.
- If the product does not operate normally by following the operating instructions. Adjust only those controls that are covered by the operation instructions. Improper adjustment of other controls may result in damage and often requires extensive work by an authorized technician to restore the product to normal operation.
- If the product has been dropped and the telephone base and/or handset has been damaged.
- If the product exhibits a distinct change in performance.
16. Avoid using a telephone (other than cordless) during an electrical storm. There is a remote risk of electric shock from lightning.
17. Do not use the telephone to report a gas leak in the vicinity of the leak. Under certain circumstances, a spark may be created when the adapter is plugged into the power outlet, or when the handset is replaced in its cradle. This is a common event associated with the closing of any electrical circuit. The user should not plug the phone into a power outlet, and should not plug a charged handset into the cradle, if the phone is located in an environment containing concentrations of flammable or flame-supporting gases, unless there is adequate ventilation. A spark in such an environment could create a fire or explosion. Such environments might include: medical use of oxygen without adequate ventilation; industrial gases (cleaning solvents; gasoline vapors; etc.); a leak of natural gas; etc.
18. Only put the handset of your telephone next to your ear when it is in normal mode.
19. The power adapter is intended to be correctly oriented in a vertical or floor mount position. The prongs are not designed to hold the plug in place if it is plugged into a ceiling, under-the-table or cabinet outlet.
20. For pluggable equipment, the socket-outlet shall be installed near the equipment and shall be easily accessible.
21. CAUTION: Use only the batteries indicated in this manual. There may be a risk of explosion if a wrong type of battery is used for the handset. Use only the supplied rechargeable batteries or replacement batteries (BT162342/BT262342) for the handset. Do not dispose of batteries in a fire. They may explode. Disposed of used batteries according to the instruction.
- Do not use the battery in following conditions:
o High or low extreme temperature during use, storage or transportation.
o Replacement of a battery with an incorrect type that can defeat a safeguard.
o Disposal of a battery into fire or a hot oven, or mechanically crushing or cutting of a battery, that can result in an explosion.
o Leaving a battery in an extremely high temperature surrounding environment that can result in an explosion or the leakage of flammable liquid or gas.
o A battery subjected to extremely low air pressure that can result in an explosion or the leakage of flammable liquid or gas.
22. Use only the adapter included with this product. Incorrect adapter polarity or voltage can seriously damage the product.
23. The applied nameplate is located at the bottom or rear of the product.
SAVE THESE INSTRUCTIONS
Battery
- Use only the battery provided or equivalent. To order a replacement, visit our website at www.vtechphones.com or call 1 (800) 595-9511. In Canada, go to phones.vtechcanada.com or call 1 (800) 267-7377.
- Do not dispose of the battery in a fire. Check with local waste management codes for special disposal instructions.
- Do not open or mutilate the battery. Released electrolyte is corrosive and may cause burns or injury to the eyes or skin. The electrolyte may be toxic if swallowed.

WHAT'S IN THE BOX



INSTALL AND CONNECT

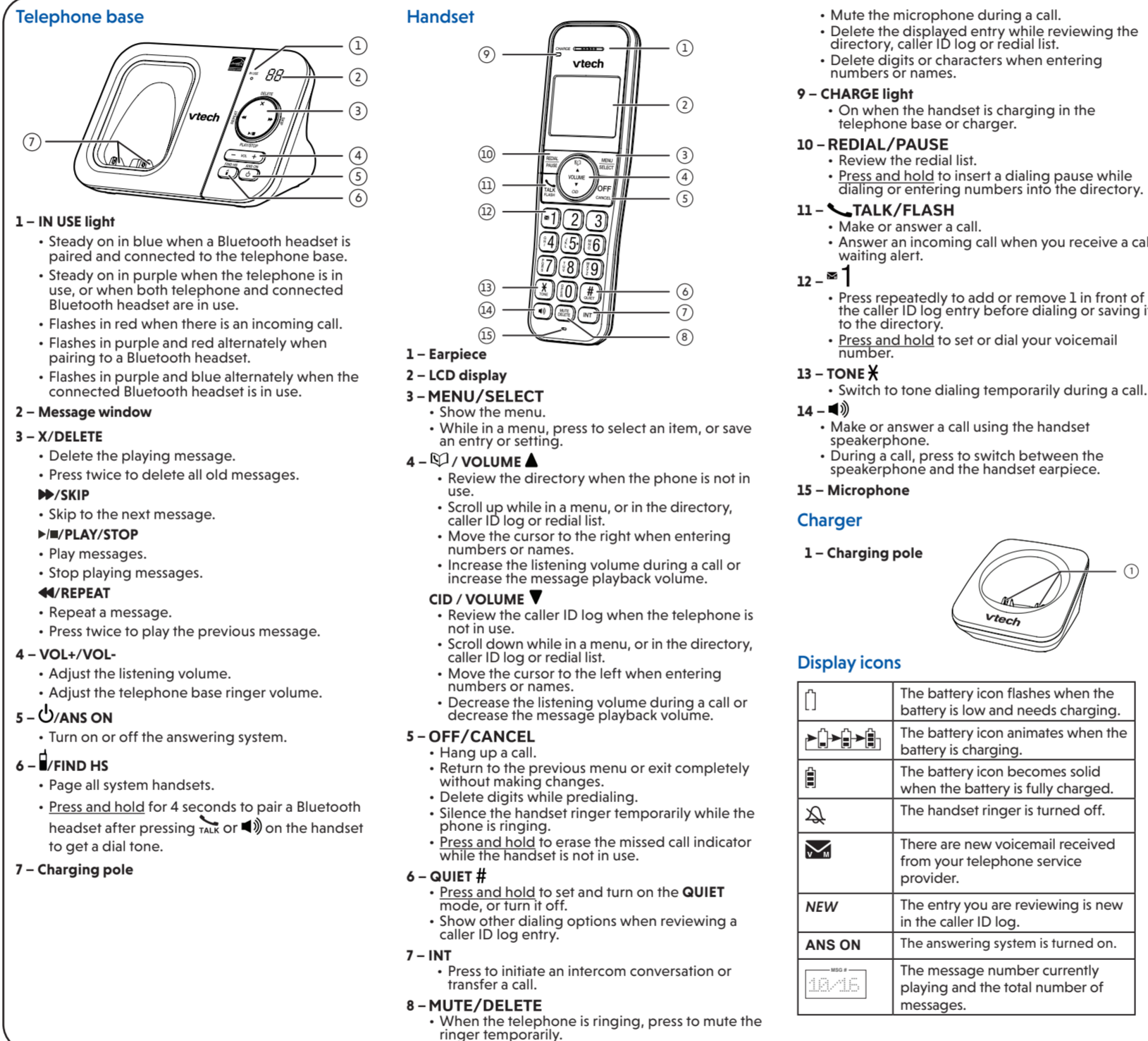


SETUP

After the telephone is installed or power returns following a power outage and battery depletion, the handset will prompt you to set the date and time.
Date and time
When the handset prompts, follow the steps below to set the date and time.
1. Use the dialing keys (0-9) to enter the month (MM), date (DD) and year (YY). Then press SELECT.
2. Use the dialing keys (0-9) to enter the hour (HH) and minute (MM). Then press V or A to choose AM or PM.
3. Press SELECT to save.
NOTES:
To skip setting the date and time, press CANCEL.
If you have skipped the prompt, you can set up again by pressing MENU. Scroll to Set date/time, and press SELECT. Then, follow the steps above.
Change LCD language settings
You can select English, French, or Spanish to be used in all screen displays:
1. Press MENU when the handset is not in use.
2. Press V or A to scroll to Settings and then press SELECT.
3. Press SELECT again to choose LCD language.
4. Press V or A to choose English, Français or Español, and then press SELECT twice to save.
NOTE: If you accidentally set the LCD language to Spanish or French, press MENU and then enter *364# to change the handset LCD language back to English while the handset is not in use.

- Exercise care in handling batteries in order not to create a short circuit with conductive materials.
Charge the battery provided with this product only in accordance with the instructions and limitations specified in this manual.
Precautions for users of implanted cardiac pacemakers
Cardiac pacemakers (applies only to digital cordless telephones):
Wireless Technology Research, LLC (WTR), an independent research entity, led a multidisciplinary evaluation of the interference between portable wireless telephones and implanted cardiac pacemakers. Supported by the U.S. Food and Drug Administration, WTR recommends to physicians that:
Pacemaker patients
- Should keep wireless telephones at least six inches from the pacemaker.
- Should NOT place wireless telephones directly over the pacemaker, such as in a breast pocket, when it is turned ON.
- Should use the wireless telephone at the ear opposite the pacemaker.
WTR's evaluation did not identify any risk to bystanders with pacemakers from other persons using wireless telephones.
ABOUT CORDLESS TELEPHONES
- Privacy: The same features that make a cordless telephone convenient create some limitations. Telephone calls are transmitted between the telephone base and the cordless handset by radio waves, so there is a possibility that the cordless telephone conversations could be intercepted by radio receiving equipment within range of the cordless handset. For this reason, you should not think of cordless telephone conversations as being as private as those on corded telephones.
- Electrical power: The telephone base of this cordless telephone must be connected to a working electrical outlet. The electrical outlet should not be controlled by a wall switch. Calls cannot be made from the cordless handset if the telephone base is unplugged, switched off or if the electrical power is interrupted.
- Potential TV interference: Some cordless telephones operate at frequencies that may cause interference to televisions and VCRs. To minimize or prevent such interference, do not place the telephone base of the cordless telephone near or on top of a TV or VCR. If interference is experienced, moving the cordless telephone farther away from the TV or VCR often reduces or eliminates the interference.
- Rechargeable batteries: Exercise care in handling batteries in order not to create a short circuit with conducting material such as rings, bracelets and keys. The battery or conductor may overheat and cause harm. Observe proper polarity between the battery and the battery charger.
- Nickel-metal hydride rechargeable batteries: Dispose of these batteries in a safe manner. Do not burn or puncture the battery. Like other batteries of this type, if burned or punctured, they could release caustic material which could cause injury.

OVERVIEW



TELEPHONE OPERATIONS

Join a call in progress
You can use up to two handsets at a time on an outside call.
- When a handset is already on a call, press TALK or MUTE on another handset to join the call.
- To exit the call, press OFF on the handset or place it in the telephone base or charger. The call continues until all handsets hang up.
Call waiting
When you subscribe to call waiting service from your telephone service provider, you hear an alert tone if there is an incoming call while you are already on a call.
- Press FLASH to put the current call on hold and take the new call.
- Press FLASH at any time to switch back and forth between calls.
Find handset
Use this feature to find the system handset.
To start paging:
- Press FIND HS on the telephone base when not in use. All idle handsets ring and display "Paging".
- Press CANCEL to return to the previous menu.
- Press and hold CANCEL to exit completely.
Make a call
- Press TALK or MUTE, and then dial the telephone number.
Answer a call
- Press TALK or MUTE or any dialing keys.
End a call
- Press OFF or put the handset back in the telephone base or charger.
Speakerphone
- During a call, press MUTE on the handset to switch between speakerphone and handset earpiece.
Volume
- During a call, press VOLUME up and VOLUME down to adjust the listening volume.
Mute
The mute function allows you to hear the other party but the other party cannot hear you.
1. During a call, press MUTE. The handset displays Muted.
2. Press MUTE again to resume the conversation. The handset displays Microphone on briefly.
Caller ID
If you subscribe to caller ID service, information about each caller appears after the first or second ring. If you answer a call before the caller information appears on the screen, it will not be saved in the caller ID log.
The caller ID log stores up to 50 entries. Each entry has up to 24 digits for the phone number and 15 characters for the name.
If the telephone number has more than 15 digits, only the last 15 digits appear. If the name has more than 15 characters, only the first 15 characters are shown and saved in the caller ID log.
Review a caller ID log entry
1. Press CID when the phone is not in use.
2. Press V or A to browse through the caller ID log.
Delete a speed dial entry
1. Press MENU when the handset is not in use.
2. Press V or A to scroll to Directory, then press SELECT.
3. Scroll to Speed dial, then press SELECT.
4. Scroll to a desired speed dial location and then press DELETE.
- The screen displays Clear SD #X?
5. Press SELECT to confirm.
Dial a directory entry
1. Search for or review the directory entries (see Review a directory entry).
2. When the desired entry appears, press TALK or MUTE to dial.
Speed Dial
You can copy up to 10 directory entries into the speed dial locations (0-9) so that you can dial these numbers using shortcuts.
Assign a speed dial entry
1. Press MENU when the handset is not in use.
2. Press V or A to scroll to Directory, then press SELECT.
3. Scroll to Speed dial, then press SELECT.
4. Scroll to a desired speed dial location and then press SELECT.
5. Scroll to a desired directory entry, then press SELECT to save.
Reassign a speed dial entry
1. Press MENU when the handset is not in use.
2. Press V or A to scroll to Directory, then press SELECT.
3. Scroll to Speed dial, then press SELECT.
Dial a directory entry
1. Search for or review the directory entries (see Review a directory entry).
2. When the desired entry displays, press DELETE.
3. When the handset displays Delete contact?, press SELECT.
Edit a directory entry
1. Search for or review the directory entries (see Review a directory entry).
2. When the desired entry displays, press SELECT.
3. Use the dialing keys to edit the number, then press SELECT.
4. Use the dialing keys to edit the name, then press SELECT.
5. Press SELECT to save.
While entering names and numbers, you can:
- Press DELETE to backspace and erase a digit or character.
- Press and hold DELETE to erase the entire entry.

Bluetooth wireless technology operates within a short range (a maximum of approximately 15 feet) from the telephone base. Keep connected handset within this range.
For more details about the Bluetooth feature, read the online Complete user's manual.
Pair and connect a Bluetooth headset
1. Set your Bluetooth headset to pairing mode. Refer to your Bluetooth headset user's manual to learn how.
2. Press TALK or MUTE on the handset.
3. Press and hold FIND HS on the telephone base for 4 seconds.
- The telephone then enters pairing mode.
- The IN USE light flashes in purple and red alternately.
- To cancel pairing, press FIND HS on the telephone base.
4. When successfully paired and connected to the Bluetooth headset, the IN USE light becomes steady on in blue.
5. Press OFF on the handset or place the handset in the telephone base or charger after pairing. The IN USE light becomes steady on in blue.
Bluetooth headset connection status:
- Pairing - while pairing to a Bluetooth headset, the IN USE light flashes in purple and red alternately.
- Connected - when successfully paired and connected to a Bluetooth headset, the IN USE light becomes steady on in blue when the telephone is not in use.
NOTE: When there is an incoming call, you hear a ringing tone on your Bluetooth headset and the IN USE light flashes in red. You can answer the incoming call with your Bluetooth headset.
- Bluetooth headset in use - when the connected Bluetooth headset is in use, the IN USE light flashes in purple and blue alternately.
- Both Bluetooth and Bluetooth headset are in use - when both the telephone and the connected Bluetooth headset are in use, the IN USE light becomes steady on in purple.
- No connection - the IN USE light turns off.
Remove paired Bluetooth headset
1. Press TALK or MUTE on the handset.
2. Press and hold FIND HS on the telephone base for 4 seconds. The paired Bluetooth headset will be removed.
NOTES:
- You can use your connected Bluetooth headset to answer calls or end the call.
- If you fail to connect your Bluetooth headset to the telephone, re-try the pairing steps above.
To pair another Bluetooth headset to the telephone, perform the pairing steps above and the current paired headset will be replaced by the new Bluetooth headset.
While on a call using your Bluetooth headset, keep your headset closer to the telephone base (within 15 feet) and make sure that there are no physical obstacles such as large furniture or thick wall in between.
Review and dial a redial list entry
1. Search for or review the redial list entries (see Review and dial a redial list entry).
2. Press TALK or MUTE repeatedly until the desired entry displays.
3. Press TALK or MUTE to dial.
Delete a redial list entry
1. Search for or review the redial list entries (see Review and dial a redial list entry).
2. When the desired redial entry displays, press DELETE.
Intercom
Use the intercom features for conversations between two handsets.
1. Press INT on your handset when not in use. Use the dialing keys to enter a destination handset number if necessary.
2. To answer the intercom call, press TALK or MUTE, INT or any dialing key on the destination handset.
3. To end the intercom call, press OFF or place the handset back in the telephone base or charger.
Answer an incoming call during an intercom call
If you receive an incoming call during an intercom call, there is an alert tone.
- To answer the outside call, press TALK or MUTE. The intercom call ends automatically.
- To end the intercom call without answering the outside call, press OFF. The telephone continues to ring.
Call transfer using intercom
While on an outside call, you can use the intercom feature to transfer the call from one handset to another.
1. Press INT on your handset during a call. The current call is put on hold. Use the dialing keys to enter a destination handset number if necessary.
2. To delete all caller ID log entries:
1. Press MENU when the phone is not in use.
2. Press V or A to scroll to Caller ID log and then press SELECT.
3. Scroll to Del all calls and then press SELECT twice.

Go to www.vtechphones.com (US) to register your product for enhanced warranty support and latest Vtech product news.
Go to phones.vtechcanada.com (Canada) for the latest Vtech product news.
© 2024 Vtech Telecommunications, Inc. All rights reserved. 02/24.
VTECH X-UK-CAN_M_CIB_V1_240223
Speakers are subject to change without notice.

1. To answer the intercom call on the destination handset, press TALK, MUTE, INT or any dialing key on the destination handset. You can now have a private conversation before transferring the call.
3. From this intercom call, you have the following options:
- You can let the destination handset join you on the outside call in a three-way conversation. Press and hold INT on the originating handset.
- You can transfer the call. Press OFF, or place your handset back in the telephone base or charger. The destination handset is then connected to the outside call.
- You can press INT to switch between the outside call (Outside call displays) and the intercom call (Intercom displays).
- The destination handset can end the intercom call by pressing OFF, or by placing the handset back in the telephone base or charger. The outside call continues with the original system handset.

1. Press V or A to move the cursor to the left or right.
- Press and hold PAUSE to insert a dialing pause (for entering numbers only).
- Press 0 to add a space (for entering names only).
Review a directory entry
Entries are sorted alphabetically.
1. Press CID when the phone is not in use.
2. Press V or A to browse through the directory, or use the dialing keys to start a name search.
Delete a directory entry
1. Search for or review the directory entries (see Review a directory entry).
2. When the desired entry displays, press DELETE.
3. When the handset displays Delete contact?, press SELECT.
Edit a directory entry
1. Search for or review the directory entries (see Review a directory entry).
2. When the desired entry displays, press SELECT.
3. Use the dialing keys to edit the number, then press SELECT.
4. Use the dialing keys to edit the name, then press SELECT.
5. Press SELECT to save.

4. Scroll to a desired speed dial location and then press SELECT twice.
- Reassign SD displays.
5. Press SELECT again.
6. Scroll to a desired directory entry, then press SELECT to save.
Dial a speed dial entry
- Press and hold a dialing key (0-9) to dial the number stored in the corresponding location.
Delete a speed dial entry
1. Press MENU when the handset is not in use.
2. Press V or A to scroll to Directory, then press SELECT.
3. Scroll to Speed dial, then press SELECT.
4. Scroll to a desired speed dial location and then press DELETE.
- The screen displays Clear SD #X?
5. Press SELECT to confirm.
Missed call indicator
When there are calls that have not been reviewed in the caller ID log, the handset displays XX missed calls.
Each time you review a caller ID log entry marked NEW, the number of missed calls decreases by one.
When you have reviewed all the missed calls, the missed call indicator no longer displays.
If you do not want to review the missed calls

one by one, press and hold CANCEL on the idle handset to erase the missed call indicator. All the entries are then considered old.
Dial a caller ID log entry
1. Search for or review the caller ID log entries (see Review a caller ID log entry).
2. When the desired caller ID log entry displays, press SELECT.
3. Use the dialing keys to edit the number, if necessary. Then press SELECT.
4. Use the dialing keys to edit the name, if necessary. Then press SELECT.
Delete the caller ID log entries
1. Search for or review the caller ID log entries (see Review a caller ID log entry).
2. When the desired caller ID log entry displays, press DELETE.

