

Go to www.vtechphones.com to register your product for enhanced warranty support and latest VTech product news.

VC2810

Sleep Sensor

(for use with VC2105 5" Smart Nursery Over-the-Crib Mount Monitor)



vtech
Quick start guide

IMPORTANT SAFETY INSTRUCTIONS

The applied nameplate is located at the bottom of the sensor's base. When using your equipment, basic safety precautions should always be followed to reduce the risk of fire, electric shock and injury, including the following:

- Follow all warnings and instructions marked on the product.
- Adult setup is required.
- This product is intended as an aid. It is not a substitute for responsible and proper adult supervision and should not be used as such.
- This product is not intended for use as a medical monitor.
- Do not use this product near water, for example, near to a bath, sink, swimming pool or shower.
- CAUTION:** Use only the battery provided. There may be a risk of explosion if a wrong type of battery is used for the parent unit. The battery cannot be subjected to high or low extreme temperature and low air pressure at high altitude during use, storage or transportation. Disposal of battery in fire or a hot oven, mechanically crushing or cutting the battery can result in an explosion. Leaving the battery in an extremely high temperature surrounding environment can result in an explosion or the leakage of flammable liquid of gas. Battery subjected to extremely low air pressure may result in an explosion or the leakage of flammable liquid or gas. Dispose of used battery according to the information in **The RBRC seal**.
- Rechargeable battery information: 3.8V 215mAh 0.817Wh Lithium-ion battery Zhongshan Tianmao Battery Co. Ltd. Model: BP2196/RM5757
- For pluggable equipment, the socket-outlet (power adapter) should be installed near the equipment and should be easily accessible.
- Unplug this product from the wall outlet before cleaning. Do not use liquid or aerosol cleaners. Use a damp cloth for cleaning.
- Do not modify the power adapters or replace with other adapters, as this causes a hazardous situation.
- This product should be operated only from the type of power source indicated on the marking label. If you are not sure of the type of power supply in your home, consult your dealer or electricity supply provider.
- Do not overload wall outlets or use an extension cord.
- Do not place this product on an unstable table, shelf, stand or other unstable surfaces.
- This product should not be placed in any area where proper ventilation is not provided. Slots and openings in the back or bottom of this product are provided for ventilation. To protect them from overheating, these openings must not be blocked by placing the product on a soft surface such as a bed, sofa or rug. This product should never be placed near or over a radiator or heat source.
- Never push objects of any kind into this product through the slots because they may touch dangerous voltage points or create a short circuit. Never spill liquid of any kind on the product.
- To reduce the risk of electric shock, do not disassemble this product, but take it to an authorized service facility. Disassembling or removing parts of the product other than via the battery door may expose you to dangerous voltages or other risks. Incorrect reassembling can cause electric shock when the product is subsequently used.
- You should test the sound reception every time you turn on the units or move one of the components.
- Periodically examine all components for damage.
- There is a very low risk of privacy loss when using certain electronic devices, such as baby monitors, cordless telephones, etc. **To protect your privacy, make sure the product has never been used before purchase, reset the baby monitor periodically by powering off and then powering on the units, and power off the baby monitor if you are not intending to use it for some time.**
- Children should be supervised to ensure that they do not play with the product.
- The small parts of this device can be swallowed by babies or small children. Keep these parts out of reach of children.
- The product is not intended for use by persons (including children) with reduced physical, sensory or mental capabilities, or lack of experience and knowledge, unless they have been given supervision or instruction concerning use of the appliance by a person responsible for their safety.
- Do not use the device on a baby while the device is being charged.

SAVE THESE INSTRUCTIONS

Cautions

- Use and store the product at a temperature between 32°F (0°C) and 104°F (40°C).
- Mishandling batteries can cause burn, fire or explosion hazards.
- Do not expose the product to extreme cold, heat or direct sunlight. Do not put the product close to a heating source.

- Warning—Strangulation Hazard—Children have STRANGLED in cords.** Keep this cord out of the reach of children (more than 3 ft (0.9m) away). Do not remove warning label on the adapter cord.

Precautions for users of implanted cardiac pacemakers

Cardiac pacemakers (applies only to digital cordless devices): Wireless Technology Research, LLC (WTR), an independent research entity, led a multidisciplinary evaluation of the interference between portable wireless devices and implanted cardiac pacemakers. Supported by the U.S. Food and Drug Administration, WTR recommends to physicians that:

Pacemaker patients

- Should keep wireless devices at least six inches from the pacemaker.
- Should NOT place wireless devices directly over the pacemaker, such as in a breast pocket, when it is turned ON.

WTR's evaluation did not identify any risk to bystanders with pacemakers from other persons using wireless devices.

Electromagnetic fields (EMF)

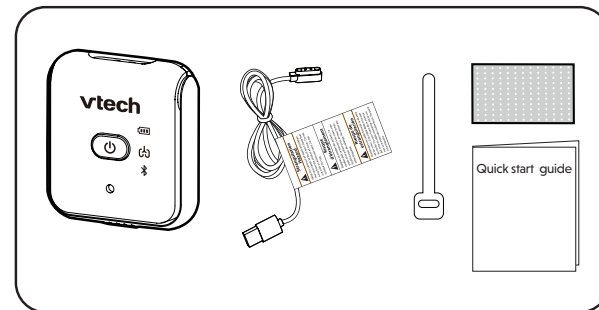
This VTech product complies with all standards regarding electromagnetic fields (EMF). If handled properly and according to the instructions in this user's manual, the product is safe to be used based on scientific evidence available today.

DISCLAIMER

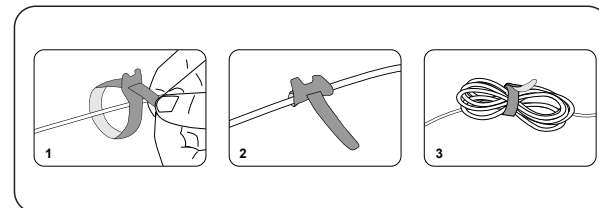
Our products are NOT medical devices. They are not intended for use as medical devices or to replace medical devices. They shall not be relied upon for any type of clinical monitoring. They are not designed to and are not intended to diagnose, treat, cure, mitigate, alleviate or prevent any disease or other condition, including but not limited to, sudden infant death syndrome (SIDS).

Our products are only intended to assist you in tracking your baby's general sleep patterns. False positive or false negative readings about your baby's sleep patterns are a potential risk of our products. Our products are not a substitute for medical consultation and treatment or adult supervision and care.

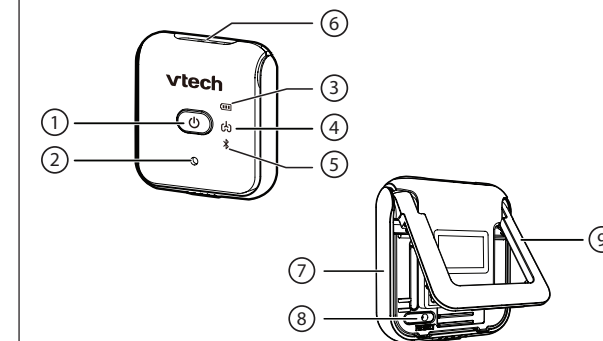
WHAT'S IN THE BOX



CABLE MANAGEMENT



OVERVIEW



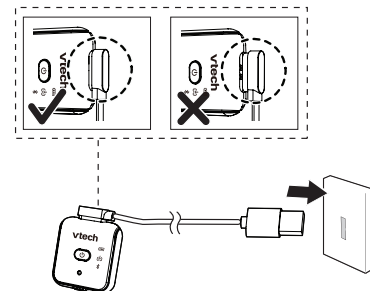
- Power button**
 - Press to turn the sensor on/off.
 - Press and hold to enter Bluetooth pairing mode.
- Speaker**
- Battery indicator (Red)**
 - Lights on for 3 seconds when the sensor is powered on.
 - Flashes, then turns off when the battery power is low.
 - Steady flashing light when the sensor is in charging and fully charged.

- Sleep quality indicator (Green)**
 - Lights on for 3 seconds when the sensor is powered on.
 - Flashes slowly when baby sleeps normally.
 - First alert - When motion is not detected over 15 seconds, LED indicator flashes quickly with a soft buzzer and vibration for 10 seconds, any motion in this period will stop the buzzer and vibration. The LED indicator resumes to normal.
 - No motion alert - If no motion was detected for further 5 seconds after the First Alert, LED indicator will flash quickly with louder buzzer and vibration, press the power button to stop the alert.
- Bluetooth indicator (Blue)**
 - Lights on for 3 seconds when the sensor is powered on.
 - Flashes blue, then turns off when the sensor enters in pairing mode.
- Charging port**
- Clip locker**
- Reset button**
 - Insert a pin into the hole in order to reset the device.
- Diaper/pant clip**

CONNECT, CHARGE AND POWER ON THE SENSOR

Connect the charging cable to the sensor and a USB power port (5V, 2A or below). The Battery indicator lights red steadily.

After the sensor is fully charged, press the power button to turn the sensor on. The three LED indicators turn on and then turn off.

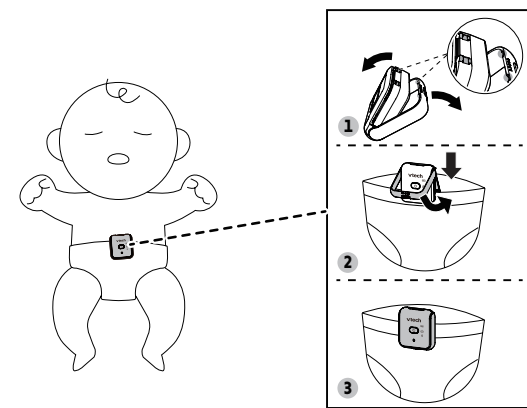


NOTES

- Do not use the device on a baby while the device is being charged.
- ONLY charge the sensor with 5V, 2A or below USB power port.
- Before using the sensor for the first time, charge the sensor battery for 12 hours. When the sensor battery is fully charged, the red battery indicator remains on.
- The standby time varies depending on your actual use.
- If the battery power is low, the battery indicator flashes red, then goes off.

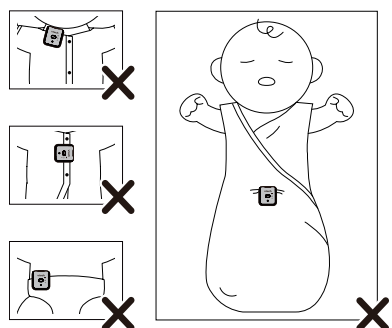
ATTACH THE SENSOR TO YOUR BABY

To place the sensor on the diaper or pants, lift up the clip locker to open the clip. Next, **hang the clip on the center of the waistband** of diaper or pants. Finally, close the clip locker to firmly attach the sensor onto diaper or pants.



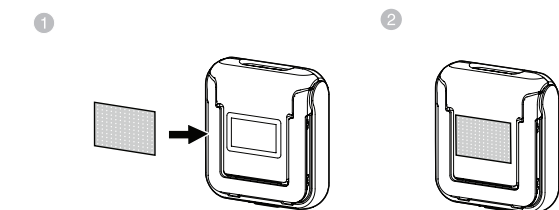
CAUTION

- If you are concerned about using your Sleep Sensor on your newborn while the umbilical cord stump is still attached, there is no need to worry. It is completely normal. You can still use the Sleep Sensor, but we recommend placing it on **your baby's side** until the umbilical cord stump falls off.
- Make sure to clip the sleep sensor onto the diaper or pants. Don't clip it on the neckline or placket of the sleeper outfit. Also, avoid clipping it on the side of the diaper or pants, unless it's for a newborn.



TIP

- In case the sleep sensor came loose easily from diaper, stick the mini sticker on the back of the sensor as illustrated in below image. When hanging the clip on the center of the waistband of the diaper or pants, press the mini sticker towards the clip, and then close the clip locker.



PAIR THE SENSOR WITH THE CAMERA VIA BLUETOOTH

Follow the instructions in the mobile app to set up and pair your sensor.

- Turn on the Sleep Sensor.
- Tap to run the mobile app in your mobile device, and set your mobile device to Bluetooth discoverable mode.
- Make sure the camera is turned on and connected with app already.
- In the plus app, select **Device**, select **Sleep Sensor**, scroll through the introduction of the sensor, then select **Pair**.



- Put the sensor close to your mobile and camera. You should see the sensor appear in the search result. Select the sensor and press **Continue to Pair**.
- Press and hold the power button on the sensor to enter pairing mode. The Bluetooth LED indicator flashes blue.
- Wait for a while for the pairing process. If they are paired successfully, the Bluetooth LED indicator will turn off.

NOTES

- Make sure your sensor is powered on before pairing.
- Make sure the camera is turned on and connected with app already.
- Place your mobile phone near the sensor for better connection.



Pairing sensor video

PROTECT YOUR PRIVACY AND ONLINE SECURITY

VTech cares about your privacy and peace of mind. That's why we've put together a list of industry-recommended best practices to help keep your wireless connection private and your devices protected when online. We recommend you carefully review and consider complying with the following tips.

- Ensure your wireless connection is secure.
 - Before installing a device, ensure your router's wireless signal is encrypted by selecting the "WPA2-PSK with AES" setting in your router's wireless security menu. Change default settings.
 - Change your wireless router's default wireless network name (SSID) to something unique.
 - Change default passwords to unique, strong passwords. A strong password:
 - Is at least 10 characters long.
 - Is complex.
 - Does not contain dictionary words or personal information.
 - Contains a mix of uppercase letters, lowercase letters, special characters and numbers.

Keep your devices up to date.

- Download security patches from manufacturers as soon as they become available. This will ensure you always have the latest security updates.
- If the feature is available, enable automatic updates for future releases.

Disable Universal Plug and Play (UPnP) on your router.

- UPnP enabled on a router can limit the effectiveness of your firewall by allowing other network devices to open inbound ports without any intervention or approval from you. A virus or other malware program could use this function to compromise security for the entire network.

- For more information on wireless connections and protecting your data, please review the following resources from industry experts:
- Federal Communications Commission: Wireless Connections and Bluetooth Security Tips - www.fcc.gov/consumers/guides/how-protect-yourself-online.
 - U.S. Department of Homeland Security: Before You Connect a New Computer to the Internet - www.us-cert.gov/ncas/tips/ST15-003.
 - Federal Trade Commission: Using IP Cameras Safely - <https://www.consumer.ftc.gov/articles/0382-using-ip-cameras-safely>.
 - Wi-Fi Alliance: Discover Wi-Fi Security - <http://www.wi-fi.org/discover-wi-fi/security>.


SLEEP ALERT

First Alert

If the sensor detects that the baby has stopped moving for 15 seconds, it will release an alert:

- The alert will be in the form of a vibration with a buzzer, which will notify the parents.
- The app and parent unit will provide an indication to notify parents about the detected abnormal status.


To turn off the alert, you can shake the sensor.


Sleep Sensor	First Alert Green  sleep quality indicator flashes quickly, the sensor vibrates with soft buzzer alert for 10 seconds.
App	Open app and do not run in background or the app is running in background: An alert is displayed on the app.
Parent Unit	Banner alert and alert tone An audible banner alert is displayed on the screen, and will dismiss after 5 seconds. NOTE: You cannot set the alert tone volume nor turn off the alert tone setting.

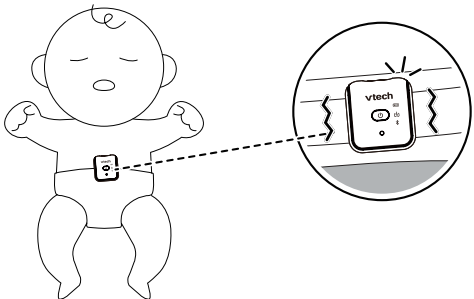
No Motion Alert

If the sensor has vibrated with buzzer over 10 seconds and still no motion has been detected for 5 seconds:

- Sensor will release no motion alert.
- App, parent unit and the camera will have indication to notify parents to check the device.

You need to turn off the alert by pressing the  power button on the sensor. This will also turn off the alert on the app and parent unit.

NOTE: Pressing  to turn off the no motion alert will also power off the sensor.



THE RBRC SEAL

The RBRC seal on the lithium-ion battery indicates that VTech Communications, Inc. is voluntarily participating in an industry program to collect and recycle these batteries at the end of their useful lives, when taken out of service within the United States and Canada. The program provides a convenient alternative to placing used lithium-ion batteries into the trash or municipal waste, which may be illegal in your area.

VTech's participation makes it easy for you to drop off the spent product at local retailers participating in the program or at authorized VTech product service centers. Please call **1 (800) 8 BATTERY** for information on Li-ion battery recycling and disposal bans/restrictions in your area. VTech's involvement in this program is part of its commitment to protecting our environment and conserving natural resources.

The **RBRC Seal** and **1 (800) 8 BATTERY** are registered trademarks of Call2recycle, Inc.

FCC AND IC REGULATIONS

FCC Part 15

NOTE: This equipment has been tested and found to comply with the requirements for a Class B digital device under Part 15 of the Federal Communications Commission (FCC) rules. These requirements are intended to provide reasonable protection against harmful interference in a residential installation. This equipment generates, uses and can radiate radio frequency energy and, if not installed and used in accordance with the instructions, may cause harmful interference to radio communications. However, there is no guarantee that interference will not occur in a particular installation. If this equipment does cause harmful interference to radio or television reception, which can be determined by turning the equipment off and on, the user is encouraged to try to correct the interference by one or more of the following measures:

- Reorient or relocate the receiving antenna.
- Increase the separation between the equipment and receiver.
- Connect the equipment into an outlet on a circuit different from that to which the receiver is connected.
- Consult the dealer or an experienced radio/TV technician for help.

WARNING: Changes or modifications to this equipment not expressly approved by the party responsible for compliance could void the user's authority to operate the equipment. This device complies with Part 15 of the FCC rules. Operation is subject to the following two conditions: (1) This device may not cause harmful interference, and (2) This device must accept any interference received, including interference that may cause undesired operation.

To ensure safety of users, the FCC has established criteria for the amount of radio frequency energy that can be safely absorbed by a user or bystander according to the intended usage of the product. This product has been tested and found to comply with the FCC criteria. The baby unit shall be installed and used such that parts of all persons' body are maintained at a distance of approximately 8 in (20 cm) or more. The transmitter and antenna of the parent unit shall be held at least 1 in (2.5 cm) from your face.

This Class B digital apparatus complies with Canadian requirement: CAN ICES-3 (B)/NMB-3(B)

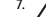
Industry Canada

This device contains licence-exempt transmitter(s)/receiver(s) that comply with Innovation, Science and Economic Development Canada's licence-exempt RSS(s). Operation is subject to the following two conditions: (1) This device may not cause interference. (2) This device must accept any interference, including interference that may cause undesired operation of the device. The term "IC:" before the certification/registration number only signifies that the Industry Canada technical specifications were met. This product meets the applicable Innovation, Science and Economic Development Canada technical specifications.

FOR CETL COMPLIANCE ONLY

La plaque signalétique appliquée est située au bas du socle de l'appareil.

Lorsque vous utilisez votre appareil, vous devriez toujours suivre certaines mesures de précaution de base afin de réduire les risques d'incendie, d'électrocution et de blessures corporelles, dont ceux qui suivent:

- Observez toutes les instructions et mises en garde inscrites sur l'appareil.
- L'installation par un adulte est requise.
- Ce produit a été conçu pour être un dispositif d'appoint seulement. Il n'est pas le remplacement d'une supervision responsable et adéquate par un adulte et ne devrait pas être utilisé comme telle.
- Ce produit n'est pas conçu pour être utilisé en tant que moniteur médical.
- N'utilisez pas cet appareil près de l'eau ni de toute autre source d'humidité, par exemple, près d'une baignoire, cuve à lessive, évier de cuisine, dans un sous-sol humide ni près d'une piscine, dans un sous-sol humide ou une douche.
- MISE EN GARDE:** N'utilisez que la pile fournie. Il peut y avoir un risque d'explosion si un mauvais type de pile est utilisé pour le dispositif alimentant. La pile ne peut pas être soumise à des températures extrêmes élevées ou basses et à une faible pression atmosphérique à haute altitude pendant son utilisation, son entreposage ou son transport. Le fait de jeter la pile dans un feu ou dans un four chaud, ou d'écraser ou de couper mécaniquement la pile peut entraîner une explosion. Le fait de laisser la pile dans un environnement à température extrêmement élevée peut entraîner une explosion ou une fuite de liquide ou de gaz inflammable. Une pile soumise à une pression d'air extrêmement basse peut provoquer une explosion ou une fuite de liquide ou de gaz inflammable. Mettez au rebut la pile usagée conformément aux informations figurant dans la section **Le sceau RBRC**.
-  Informations sur les piles rechargeables:
3,8V 215mAh 0,817Wh Lithium-ion batterie Zhongshan Tianmao Battery Co. Ltd.
Modèle: BP2196/RM5757
- Pour les appareils raccordés, la prise de courant (de l'adaptateur secteur) doit être installée près de l'équipement et doit être facilement accessible.
- Débranchez ce produit de la prise de courant avant de procéder au nettoyage. N'utilisez pas de nettoyeurs en aérosols. Utilisez un chiffon humide pour le nettoyer.
- Ne laissez aucun objet reposer ni appuyer sur le cordon d'alimentation. N'installez pas cet appareil dans un endroit où l'on risque d'écraser le cordon d'alimentation ou de le piétiner.
- Ne faites fonctionner cet appareil qu'avec le type d'alimentation indiqué sur l'étiquette. Si vous ne connaissez pas le type d'alimentation que vous possédez à votre domicile, consultez votre marchand ou votre compagnie locale d'électricité.
- Ne surchargez pas les prises de courant murales ni les rallonges électriques.
- Ne placez pas cet appareil sur un chariot, meuble, trépied, support de montage ni table chancelantes.

- Les trous et ouvertures du boîtier, situés à l'arrière de l'appareil ou sous celui-ci, servent à aérer l'appareil. Pour l'empêcher de surchauffer, ne bloquez sous aucun prétexte ces ouvertures et n'empêchez pas l'aération adéquate de l'appareil en le plaçant sur un lit, divan, tapis ou toute autre surface similaire. De même, ne le positionnez pas à proximité ni au-dessus d'une source de chaleur ou d'un calorifère. De plus, ne placez pas l'appareil dans un endroit avant de vous assurer qu'il y ait une bonne circulation d'air.
- N'enfoncez jamais d'objets à travers les ouvertures de cet appareil, car ils pourraient entrer en contact avec des points de tension dangereux ou causer des courts-circuits qui peuvent dégénérer en incendies ou en risques d'électrocution. Ne renversez jamais de liquide dans ce produit.
- Afin de réduire les risques d'électrocution, ne démontez pas cet appareil, mais apportez-le dans un centre de service autorisé. L'ouverture du boîtier ou le retrait de toutes pièces que contient cet appareil, à l'exception de l'accès autorisé à certaines portes ou ouvertures, risque de vous exposer à des points de tension dangereux ou d'autres dangers. Un remontage incorrect peut par la suite présenter des risques d'électrocution.
- Vous devriez tester la réception chaque fois que vous mettez l'appareil en fonction.
- Examinez les composantes afin de vérifier si celles-ci ne sont pas endommagées.
- Il existe un très faible risque de perte de confidentialité avec certains appareils électroniques (autres écouteurs-bébé, téléphones sans fils etc.). Pour l'éviter, s'assurer que le produit n'a jamais été utilisé avant l'achat, réinitialiser l'unité de façon périodique, éteindre l'écoute-bébé quand il n'est pas en cours d'utilisation.
- Les enfants devraient être supervisés afin de vous assurer qu'ils ne jouent pas avec l'appareil.
- Les petites pièces de ce moniteur peuvent être avalées par des bébés ou les petits enfants. Veuillez tenir ces pièces hors de portée des enfants.
- Le produit n'est pas conçu pour être utilisé par des personnes (incluant des enfants) aux capacités physiques, sensorielles ou mentales réduites ou qui manquent d'expérience et de connaissances, à moins qu'un leur ait donné suffisamment de supervision ou d'instructions relativement à l'utilisation de l'appareil par une personne responsable de leur sécurité.

CONSERVEZ CES INSTRUCTIONS

Mises en garde

- Utilisez et entreposez le produit à une température entre 0 °C (32 °F) et 40 °C (104 °F).
- Risque de brûlure, risque d'incendie, risque d'explosion associé à une mauvaise manipulation de la batterie.
- N'exposez pas cet appareil à des froids ou des chaleurs extrêmes, ainsi qu'à la lumière directe du soleil. Ne l'installez pas près d'une source de chauffage.

Stimulateurs cardiaques implantés dans l'organisme

Les stimulateurs cardiaques (ne s'applique qu'aux dispositifs numériques sans fil):
L'organisme Wireless Technology Research, LLC (WTR), une firme de recherche indépendante, a mené une évaluation pluridisciplinaire des interférences entre les téléphones sans fil portatifs et les stimulateurs cardiaques implantés dans l'organisme. Appuyée par l'Administration des aliments et drogues (FDA) des États-Unis, la firme WTR recommande aux médecins:

Avis aux détenteurs de stimulateurs cardiaques

- Vous devriez maintenir les dispositifs sans fil à au moins six pouces du stimulateur cardiaque.
- Ils ne doivent PAS placer le téléphone sans fil directement sur le stimulateur cardiaque, tel que dans une poche de chemise, lorsque celui-ci est en marche.

L'étude effectuée par l'organisme WRS n'a pas identifié de risque pour les détenteurs de stimulateurs cardiaques causés par les gens qui utilisent des dispositifs sans fil à proximité de ceux-ci.
Champs électromagnétiques (EMF)
Ce produit de VTech est conforme à toutes les normes rapportant aux champs électromagnétiques (EMF) standard. Si vous le manipulez correctement en suivant les instructions de ce guide, son utilisation sera sécuritaire pendant de nombreuses années, selon les meilleures évidences scientifiques dont nous disposons aujourd'hui.

Rollover Alert

If the sensor on the baby is rotated from top side up to bottom side up, the app and parent unit will push an indication to notify parents about the abnormal status of the baby:

App **Open app and do not run in background or the app is running in background:**
An audible alert is displayed in full screen, and a notification dismissing button is displayed.

App is closed:

When you open the app, an audible alert is displayed in full screen, and a notification dismissing button is displayed.
NOTE: Pressing **Dismiss** button on app will not turn off the sensor alert.

Parent Unit

Banner alert and alert tone
An audible banner alert is displayed on the screen, and it will remain on until you press  on the sensor to turn off.

The alert tone volume is higher than the First Alert.
NOTES:

- Pressing any button on the parent unit to dismiss the banner alert, which will not turn off the sensor alert.
- You cannot set the alert tone volume nor turn off the alert tone setting.

NEED HELP?

Driven by system updates, the software, online help topics, and online FAQs will be updated periodically.

For operations and guides to help you using your Sleep Sensor, and for latest information and supports, go and check the online help topics and online FAQs.



Use your smartphone or mobile device to access our online help.

- Go to <https://help.vtechphones.com/VC2810>; OR

Scan the QR code on the right. Launch the camera app or QR code scanner app on your smartphone or tablet. Hold the device's camera up to the QR code and frame it. Tap the notification to trigger the redirection of the online help.

- If the QR code is not clearly displayed, adjust your camera's focus by moving your device closer or further away until it is clear.

If you would like to contact us, visit <https://help.vtechphones.com/cs>.

You can also call our Customer Support at 1-844-848-8324 (1-844-84-VTECH) [in US] or 1-888-211-2005 [in Canada] for help.



VC2810

TECHNICAL SPECIFICATIONS

RF Technology	Bluetooth
Connection	Bluetooth to camera
Range	10 m
Battery	3.8V 215mAh 0.817Wh Lithium-ion battery
Power input	5V DC, 500mA

DISCLAIMER AND LIMITATION OF LIABILITY

VTech Communications, Inc. and its suppliers assume no responsibility for any damage or loss resulting from the use of this user's manual. VTech Communications, Inc. and its suppliers assume no responsibility for any loss or claims by third parties that may arise through the use of this product.

Company: VTech Communications, Inc.
Address: 9020 SW Washington Square Road - Ste 555 Tigard, OR 97223, United States Phone: 1 (800) 595-9511 in the U.S. or 1 (800) 267-7377 in Canada

CALIFORNIA ENERGY COMMISSION BATTERY CHARGING TESTING MODE

This sleep sensor meets the California Energy Commission (CEC) regulations for energy consumption. Your sensor is set up to comply with the energy-conserving standards right out of the box.

Follow the instructions to install and charge the battery. The CEC battery charging testing mode is activated while charging.

Even if the sensor is paired to camera units, the CEC battery charging testing mode is activated while it is powered off and charging.

How do you get warranty service?

To obtain warranty service in the USA, please visit our website at www.vtechphones.com or call 1 (800) 595-9511. In Canada, go to www.vtechcanada.com or call 1 (800) 267-7377.

NOTE: Before calling for service, please review the user's manual - a check of the Product's controls and features may save you a service call.

Except as provided by applicable law, you assume the risk of loss or damage during transit and transportation and are responsible for delivery or handling charges incurred in the transport of the Product(s) to the service location. VTech will return replaced Product under this limited warranty. Transportation, delivery or handling charges are prepaid. VTech assumes no risk for damage or loss of the Product in transit.

What must you return with the Product to get warranty service?

- Return the entire original package and contents including the Product to the VTech service location along with a description of the malfunction or difficulty; and
- Include a "valid proof of purchase" (sales receipt) identifying the Product purchased (Product model) and the date of purchase or receipt; and
- Provide your name, complete and correct mailing address, and telephone number.

Other limitations

This warranty is the complete and exclusive agreement between you and VTech. It supersedes all other written or oral communications related to this Product. VTech provides no other warranties for this Product. The warranty exclusively describes all of VTech's responsibilities regarding the Product. There are no other express warranties. No one is authorized to make modifications to this limited warranty and you should not rely on any such modification. State/Provincial Law Rights: This warranty gives you specific legal rights, and you may also have other rights, which vary from state to state or province to province.

Limitations: Implied warranties, including those of fitness for a particular purpose and merchantability (an unwritten warranty that the Product is fit for ordinary use) are limited to one year from the date of purchase. Some states/provinces do not allow limitations on how long an implied warranty lasts, so the above limitation may not apply to you. In no event shall VTech be liable for any indirect, special, incidental, consequential, or similar damages (including, but not limited to lost profits or revenue, inability to use the Product or other associated equipment, the cost of substitute equipment, and claims by third parties) resulting from the use of this Product. Some states/provinces do not allow the exclusion or limitation of incidental or consequential damages, so the above limitation or exclusion may not apply to you. **Please retain your original sales receipt as proof of purchase.**



Specifications are subject to change without notice. © 2023 VTech Communications, Inc. All rights reserved. 09/23: VC2810_US_QSG_V2

