

Go to www.vtechphones.com to register your product for enhanced warranty support and latest VTech product news.

VC2105
5" Smart Nursery
Over-the-Crib Mount Monitor



For more support information

vtech
Quick start guide



VC2105

Congratulations

on purchasing your new VTech product.
Before using this baby monitor, please read the **Important safety instructions**.
For support, shopping, and everything new at VTech, visit our website at www.vtechphones.com. In Canada, visit www.vtechcanada.com.

What does HD Video Monitor do?

VTech 5" Smart Nursery Over-the-Crib Mount Monitor allows you to stay close to your baby when you are on the move or away. This monitor is Wi-Fi enabled, using your home wireless network to stream live video and audio through the 1080p baby unit and 5-inch color screen parent unit. It allows you to maintain a constant connection to your baby.

You can also monitor from your smartphone or mobile tablet.
VTech 5" Smart Wi-Fi 1080p Video Monitor uses **MyVTech Baby Plus** app to let you instantly see and hear what's happening with your baby from anywhere in the world. The app can be downloaded from the App Store or the Google Play™ Store.

IMPORTANT SAFETY INSTRUCTIONS

- The applied nameplate is located at the bottom of the baby unit's base. When using your equipment, basic safety precautions should always be followed to reduce the risk of fire, electric shock and injury, including the following:
- Follow all warnings and instructions marked on the product.
 - Adult setup is required.
 - CAUTION:** Do not install the baby unit at a height above 6.5 feet (2 meters).
 - This product is intended as an aid. It is not a substitute for responsible and proper adult supervision and should not be used as such.
 - This product is not intended for use as a medical monitor.
 - Do not use this product near water, for example, near to a bath, sink, swimming pool or shower.
 - CAUTION:** Use only the battery provided. There may be a risk of explosion if a wrong type of battery is used for the parent unit. The battery cannot be subjected to high or low extreme temperature and low air pressure at high altitude during use, storage or transportation. Disposal of battery in fire or a hot oven, mechanically crushing or cutting the battery can result in an explosion. Leaving the battery in an extremely high temperature surrounding environment can result in an explosion or the leakage of flammable liquid or gas. Battery subjected to abnormally low air pressure may result in an explosion or the leakage of flammable liquid or gas. Dispose of used battery according to the information in **The RBRC seal**.
 - CAUTION:** Use only the power adapters included with this product. Incorrect power adapter polarity or voltage can seriously damage the product.
 - Power adapter information:
Baby Unit Output: 5V DC 1.5A
VTech Telecommunications Ltd.
Model: VT07EUS05150
Parent Unit Output: 5V DC 2A
VTech Telecommunications Ltd.
Model: VT07EUS05200
 - Rechargeable battery information:
3.7V 5000mAh, 18.5Wh Lithium-ion battery
Zhuhai Great Power Energy Co., Ltd.
Model: GSP06P00-5Ah-3.7V-Li-IP
 - The power adapter is intended to be correctly oriented in a vertical or floor mount position. The prongs are not designed to hold the plug in place if it is plugged into a ceiling, under-table or cabinet outlet.
 - For pluggable equipment, the socket-outlet (power adapter) should be installed near the equipment and should be easily accessible.
 - Unplug this product from the wall outlet before cleaning. Do not use liquid or aerosol cleaners. Use a damp cloth for cleaning.
 - Do not modify the power adapters or replace with other adapters, as this causes a hazardous situation.
 - Do not allow anything to rest on the power cords. Do not install this product where the cords may be walked on or crimped.
 - This product should be operated only from the type of power source indicated on the marking label. If you are not sure of the type of power supply in your home, consult your dealer or electricity supply provider.
 - Do not overheat wall outlets or use an extension cord.
 - Do not place this product on an unstable table, shelf, stand or other unstable surfaces.
 - This product should not be placed in any area where proper ventilation is not provided. Slots and openings in the back or bottom of this product are provided for ventilation. To protect them from overheating, these openings must not be blocked by placing the product on a soft surface such as a bed, sofa or rug. This product should never be placed near or over a radiator or heat source.
 - Never push objects of any kind into this product through the slots because they may touch dangerous voltage points or create a short circuit. Never spill liquid of any kind on the product.

SAVE THESE INSTRUCTIONS

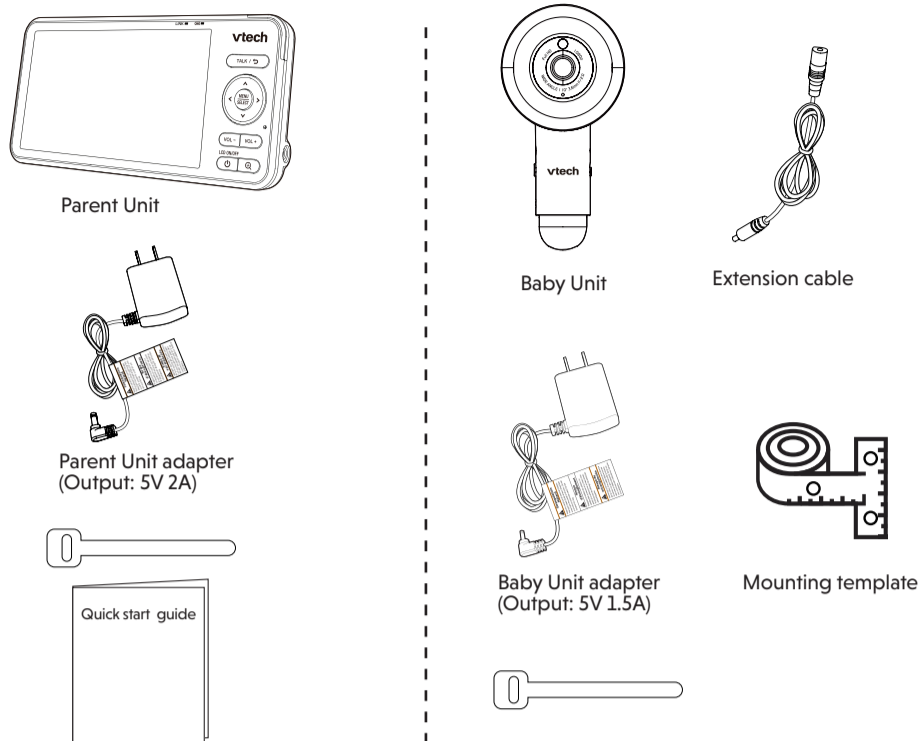
- Cautions**
- Use and store the product at a temperature between 32°F (0°C) and 104°F (40°C).
 - Mishandling batteries can cause burn, fire or explosion hazards.
 - Batteries should not be exposed to excessive heat such as bright sunshine or fire.
 - Do not expose the product to extreme cold, heat or direct sunlight. Do not put the product close to a heating source.
 - Warning—Strangulation Hazard—Children have STRANGLED in cards. Keep this cord out of the reach of children (more than 3 ft (0.9m) away). Do not remove warning label on the adapter cord.**
 - Never place the camera unit(s) inside the baby's crib or playpen. Never cover the camera unit(s) or parent unit with anything such as a towel or a blanket.
 - Other electronic products may cause interference with your camera unit. Try installing your camera unit as far away from these electronic devices as possible: wireless routers, radios, cellular telephones, intercoms, room monitors, televisions, personal computers, kitchen appliances and cordless telephones.

Precautions for users of implanted cardiac pacemakers:
Cardiac pacemakers (applies only to digital cordless devices): Wireless Technology Research, LLC (WTR), an independent research entity, led a multidisciplinary evaluation of the interference between portable wireless devices and implanted cardiac pacemakers. Supported by the U.S. Food and Drug Administration, WTR recommends to physicians that:

- Pacemaker patients**
- Should keep wireless devices at least six inches from the pacemaker.
 - Should NOT place wireless devices directly over the pacemaker, such as in a breast pocket, when it is turned ON.
- WTR's evaluation did not identify any risk to bystanders with pacemakers from other persons using wireless devices.
- Electromagnetic fields (EMF)**
This VTech product complies with all standards regarding electromagnetic fields (EMF). If handled properly and according to the instructions in this user's manual, the product is safe to be used based on scientific evidence available today.

WHAT'S IN THE BOX

Your baby monitor package contains the following items. Save your sales receipts and original packaging in the event warranty service is necessary.



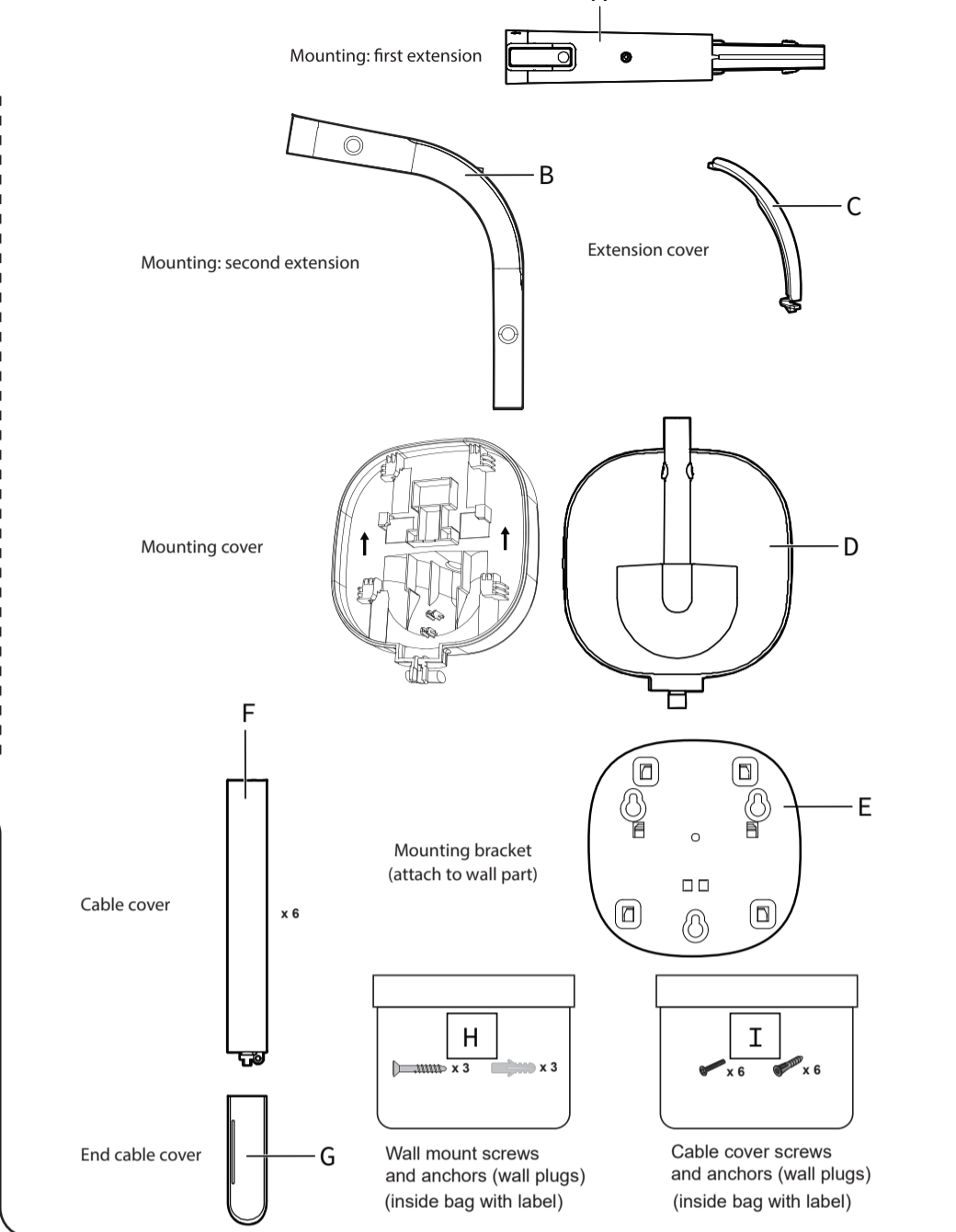
Requirements

For mobile access:

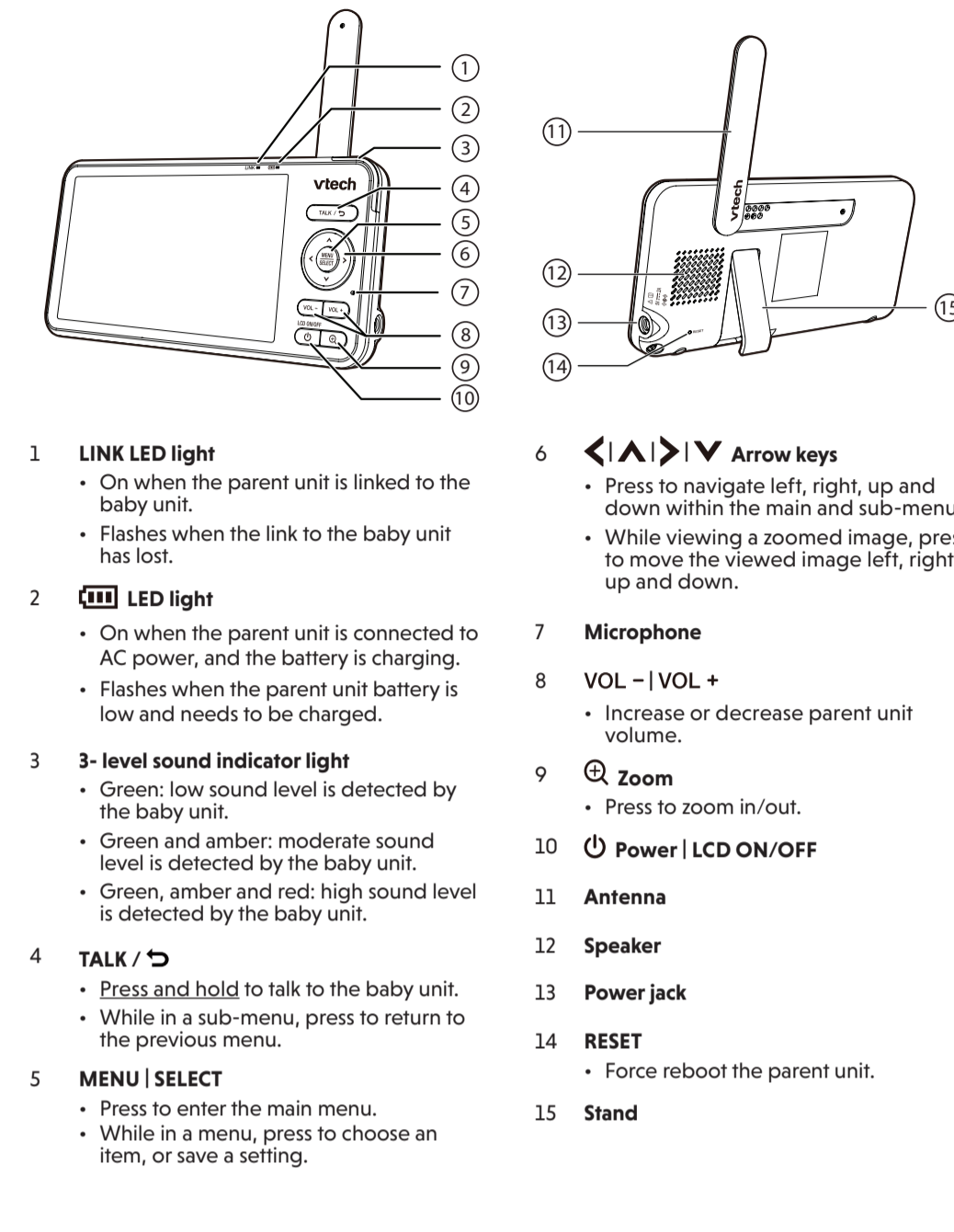
MyVTech Baby Plus mobile app	
Network	Wi-Fi
Wi-Fi router	2.4GHz 802.11 b/g/n
Internet connection	1.5 Mbps @ 720p or 2.5 Mbps @1080p upload bandwidth per baby unit

OVERVIEW

Baby unit overview



Parent unit overview



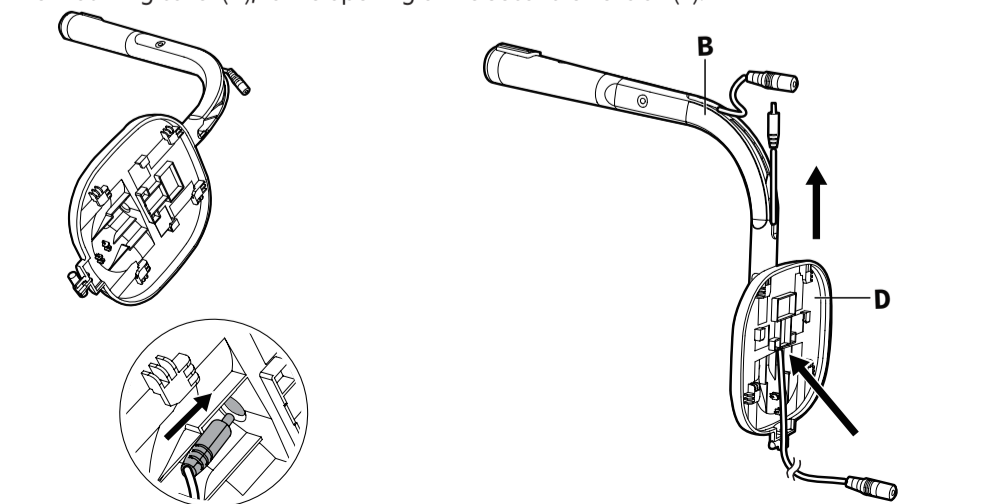
MOUNT THE BABY UNIT

Cautions:

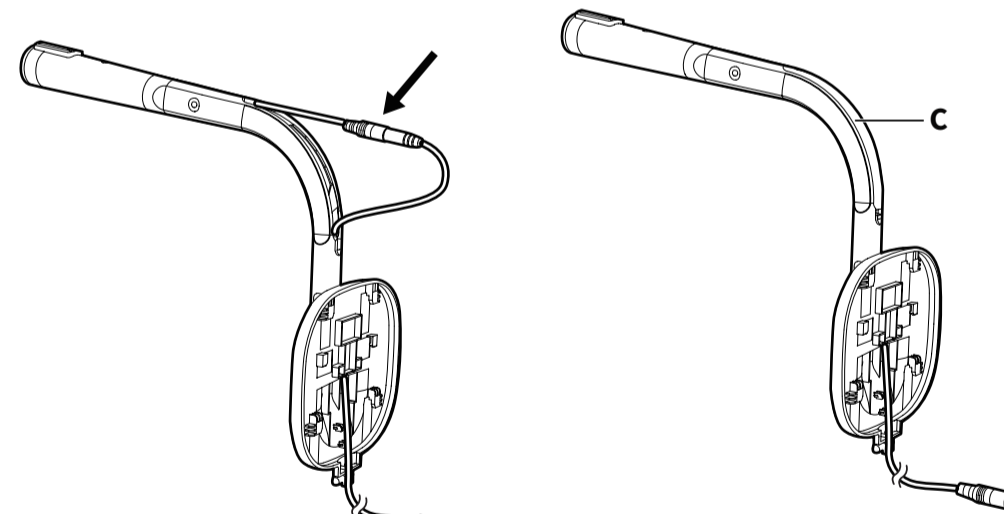
- Wall mount should be 1m above the bed sheet level or baby, and 1.7m above the floor. You can use the mounting template (a paper ruler) for measurement.
- Wall mount should install on the long side of the bed.

Install the wall mount

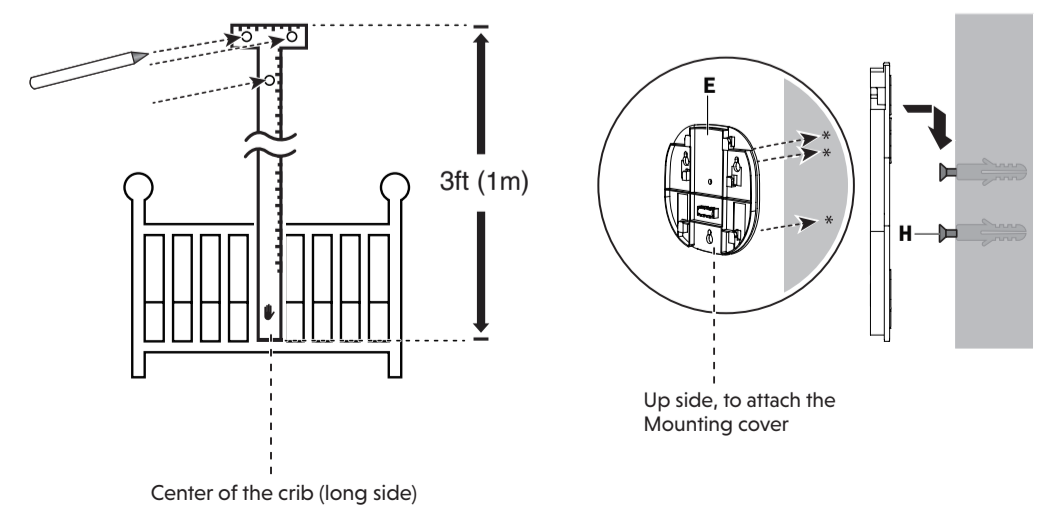
- Insert the First extension (A) onto the Second extension (B), aligning the slot in between. Make sure the DC socket is out on opening of the Second extension and ready for connection.
- Insert the Second extension (B) onto the Mounting cover (D).
- Let the cable jack of the Extension cable pass through from the back of the Mounting cover (D), to the opening of the Second extension (B).



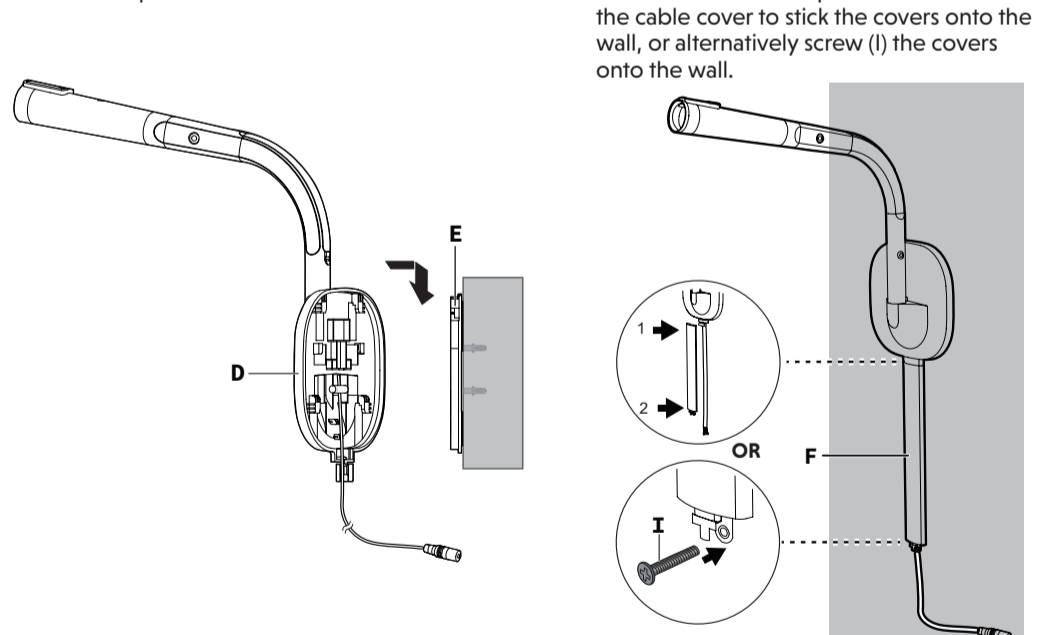
- Connect the cable jack with the DC socket, then secure the cable with the Extension cover (C).



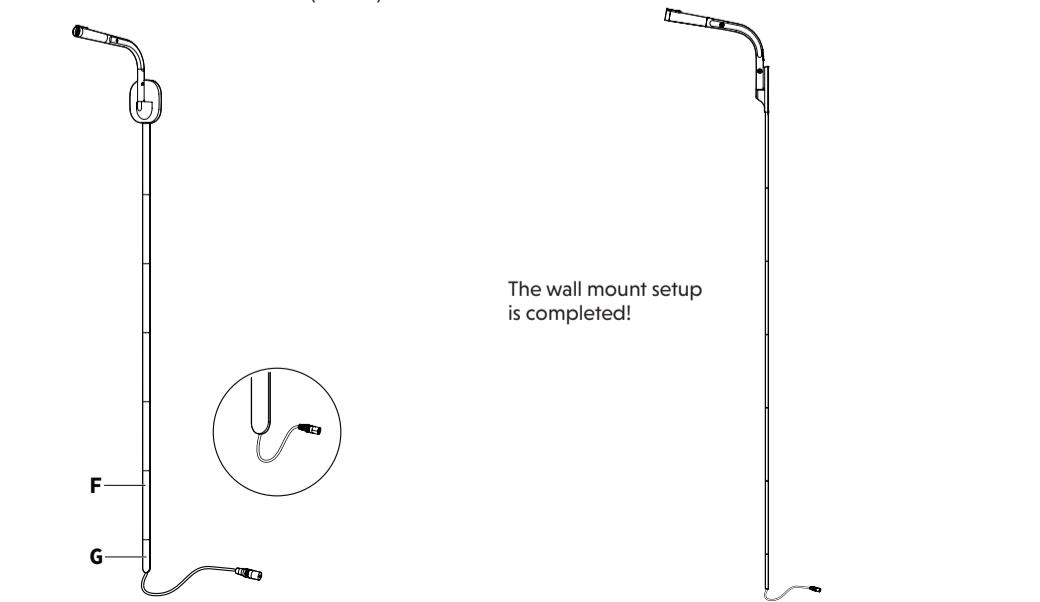
- Use Mounting template to measure the location of the wall mount, and to mark the 3 holes for the screws. Then, drill three holes on the wall (7/32 inch drill bit).
- Insert 3 plastic screw anchors (H) into the pre-drilled holes, then insert the screws (H) into the wall anchors. Tighten the screws until only 1/4 inch of the screws are exposed. Then, attach the Mounting bracket (E) onto the wall.



- Place the Mounting cover (D) on the Mounting bracket (E), and then slide it downward until it locks into place.



- Install the End cable cover (G to F) at last.



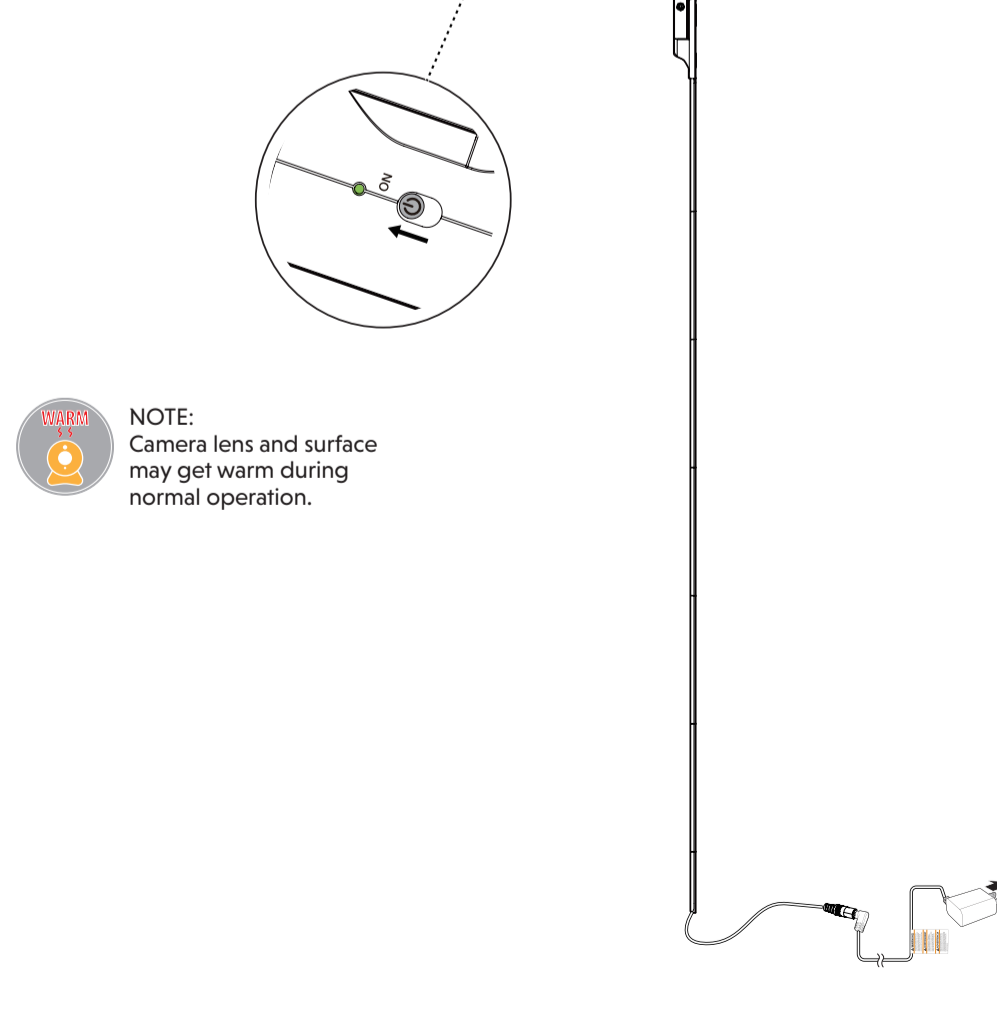
INSTALL AND POWER ON THE BABY UNIT

Install the Baby Unit onto the First extension, and connect the adapter to the end of the cable and the power supply to power up the Baby Unit.

Slide the switch to **ON** to power your Baby Unit on.

NOTES

- When powering up, the Baby Unit's status LED turns on. It will turn off after a while and remains off.
- The status LED is set to off by default.



DOWNLOAD APP FOR MOBILE ACCESS

- Download the free **MyVTech Baby Plus** mobile app and install it to a mobile device, then use your mobile device and the mobile app to monitor your baby remotely.
- Press **MENU/SELECT** when the parent unit is idle.
- Go to **Settings > Connect Mobile Phone**.
- Scan the QR code in below or search the app with keyword "myvttech baby plus" to download the app into your mobile device if you have not installed the app yet.
- Follow the instructions in the mobile app to set up and pair your baby unit to the mobile app.

Alternatively, you can download the mobile app from the App Store or Google Play store.

Install MyVTech Baby Plus mobile app

- Browse the App Store or the Google Play store.
- Search for the mobile app with the keyword "myvttech baby plus".
- Download and install the **MyVTech Baby Plus** mobile app to your mobile device.

OR
Scan the QR codes on the right to get the app.

NOTE

- Make sure your mobile device meets the minimum requirement for the mobile app.

Minimum requirement

The mobile app is compatible with:

- Android™ 6.0 or later; and
- iOS 12 or later.

- After installing the mobile app, follow the instructions in the mobile app and parent unit to set up and pair your baby unit.

In your mobile device:

- Tap **+** to run the mobile app in your mobile device, and then create a user account.
- We recommend that you use common webmail services, such as Google Gmail for registration of your user account. Check your email (and Spam folder), and activate your new camera account via the email link, then sign in to your account.
- Follow the instructions in the mobile app to pair the camera. Tap **+** Add camera setup then **Add Camera** in the mobile app to get started.

All rights reserved. 04/23 VC2105_US_05G_V1



Our products are NOT intended for use as medical devices or to replace medical devices. They shall not be relied upon for any type of clinical monitoring. They are not designed to and are not intended to diagnose, treat, cure, mitigate, alleviate or prevent any disease or other condition, including but not limited to, sudden infant death syndrome (SIDS).

Our products are only intended to track your baby's general sleep patterns. False positive or false negative readings about your baby's sleep patterns are a potential risk of our products. Our products are not a substitute for medical consultation and treatment or adult supervision and care.

VTech Communications, Inc. and its suppliers assume no responsibility for any damage or loss resulting from the use of this user's manual. VTech Communications, Inc. and its suppliers assume no responsibility for any loss or claims by third parties that may arise through the use of this product.

DISCLAIMER AND LIMITATION OF LIABILITY

Channels	11
LCD	5" Color LCD (IPS 1280x720 pixels)
Normal effective range	Maximum power allowed by FCC and IC. Actual operating range may vary according to environmental conditions at the time of use.
Power requirement	Baby unit power adapter: Output: 5V DC, 1.5A Parent unit power adapter: Output: 5V DC, 2A Parent unit battery: 3.7V 5000mAh, 18.5Wh Lithium-ion battery

TECHNICAL SPECIFICATIONS

Transmit frequency	Baby unit: 2412 - 2462 MHz Parent unit: 2412 - 2462 MHz
--------------------	--

CONNECT, CHARGE AND POWER ON THE PARENT UNIT

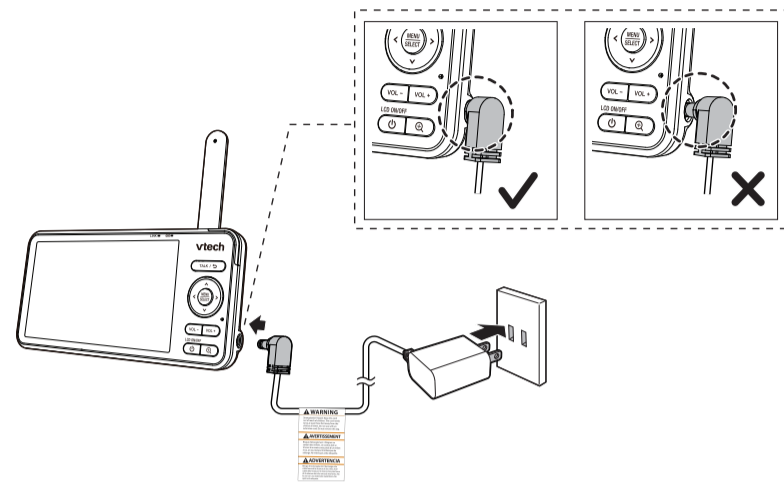
Connect the baby monitor

NOTES

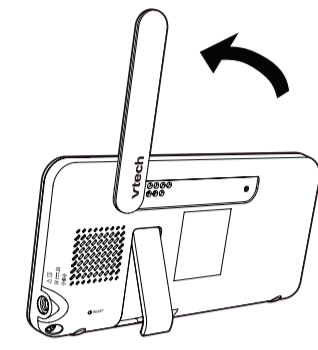
- The rechargeable battery in the parent unit is built-in.
- Use only the power adapters supplied with this product.
- Make sure the parent unit and the baby unit are not connected to an electronically controlled electric outlet.
- Connect the power adapters in a vertical or floor mount position only. The adapter prongs are not designed to hold the weight of the parent unit, so do not connect them to any ceiling, under-the-table, or cabinet outlets. Otherwise, the adapter may not properly connect to the outlets.
- Make sure the parent unit, the baby unit and the power adapter cords are out of reach of children.

The battery icon indicates the battery status (see the following table).

BATTERY INDICATORS	BATTERY STATUS	ACTION
and are displayed on the screen: The red LED light flashes. The battery icon segments are solid .	The battery has very little charge and may be used for only a short time.	Charge without interruption (about 30 minutes).
	The battery is fully charged.	To keep the battery charged, connect it to AC power when in use.



Raise the parent unit antenna for better reception



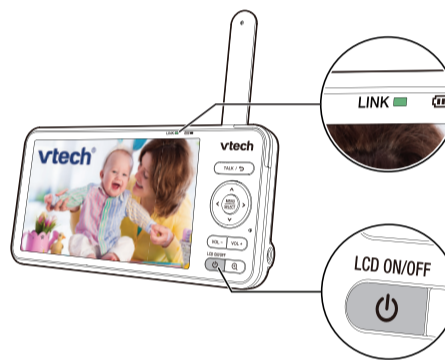
Charge the parent unit battery before use

The parent unit runs on an internal rechargeable battery or AC power. To continuously monitor your baby, keep the parent unit connected to AC power.

NOTES

- Before using the baby monitor for the first time, charge the parent unit battery for 12 hours. When the parent unit battery is fully charged, the battery icon segments are solid .
- The standby time varies depending on your actual use.

The parent unit turns on automatically after connecting to the power socket, and the welcome screen appears. You can press **Power** to turn the parent unit on or press and hold to turn it off.



Status icons

- Direct mode**
The parent unit and baby unit connect to each other directly.
- Router mode**
The parent unit and baby unit connect via the home Wi-Fi network.

The red icon(s) on the baby unit or parent unit, indicates no connection between the respective unit(s) and the router.

- Night vision is turned on.
- Motion detection alert is turned on.
- Cry alert is turned on.
- Face not in full view alert is turned on.

Status icons

- Melodies and soothing sounds are playing.
- Night light is turned on.
- Auto night light brightness is activated.
- Parent unit is muted.
- Humidity Temperature
- Battery level indicator
- Low battery indicator

- General settings**
- Camera Connection**
- Camera Volume**
- Screen Brightness**
- Screenoff Timer**

PARENT UNIT ICONS

Main Menu	Sub-menu	Options
Night light	On/Off Turn on or turn off night light.	Color Select a night light color.
	Brightness Adjust night light brightness. Set the brightness to Auto adaptive ambience.	Timer Set the timer to turn off night light after 15, 30 or 60 minutes, or remain on always.
	Melodies and soothing sounds	Play/Stop
	Library Select to play all melodies, or play one of the five melodies or five soothing sounds.	Camera Volume Adjust the play volume level.
Alerts Settings	Motion Detect Turn on/off motion detection alert. Adjust Motion Sensitivity Level to activate parent unit screen and speaker.	Temperature Turn on/off temperature detection alert. Select maximum and minimum temperature for alert range.
	Humidity Turn on/off humidity detection alert. Select maximum and minimum humidity for alert range.	Cry Detect Turn on/off cry alert.
	Face Not In Full View Turn on/off face not in full view alert.	Low battery Turn on/off low battery alert.
	Lost link Turn on/off lost link alert.	
Help and info	Help Support information	How-to Video Support video
	System Info System information	

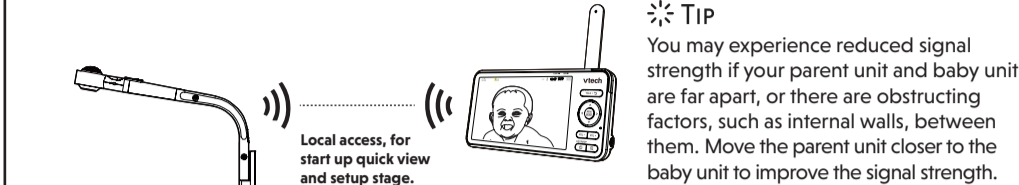
HOW THE SYSTEM WORKS

Tip For better security and more stable connectivity, this baby monitor requires connecting to a 2.4GHz home Wi-Fi network and operating in Router mode connection.

Direct mode

Your baby monitor parent unit and baby unit connect to each other in Direct mode by default, which allows you to immediately stream video out of the box.

It is NOT recommended to continue using Direct Mode connection after initial installation.



Tip You may experience reduced signal strength if your parent unit and baby unit are far apart, or there are obstructing factors, such as internal walls, between them. Move the parent unit closer to the baby unit to improve the signal strength.

Router mode

You are required to set up your monitor in Router mode to enjoy live video streaming via your parent unit with an enhanced connection. Router mode is the recommended mode for stable connectivity.

Router mode uses your 2.4GHz home Wi-Fi network to connect your video monitor. It supports live video streaming through the parent unit and smartphone app.

If you want to stream live video remotely with your mobile device, download and install the MyVtech Baby Plus mobile app. With the mobile app, your Wi-Fi router (not included) provides Internet connectivity to your HD video monitor system. It serves as a communicating channel between your baby unit and mobile device, allowing you to monitor and/or control your baby unit wherever you are. For more details, see Download app for mobile access section in this quick start guide.

NOTE

- When both parent unit and app are viewing the camera simultaneously, the video quality will be optimized to deliver the best possible viewing result.

BASIC OPERATION

After powering up your baby monitor, the parent unit streams live video in direct mode. We recommend you follow the instructions on-screen to set up home Wi-Fi network with your monitor for functionality enhancements and mobile access. See **Auto software and firmware update** and **Download app for mobile access** in this Quick Start Guide.

Use the menu

Press **MENU** on the parent unit to enter the main menu, choose a menu item, or save a setting. You can use the parent unit menu for advanced settings or operations, such as to play or stop the baby unit lullaby, or adjust the baby unit sound sensitivity.

While in the menu:

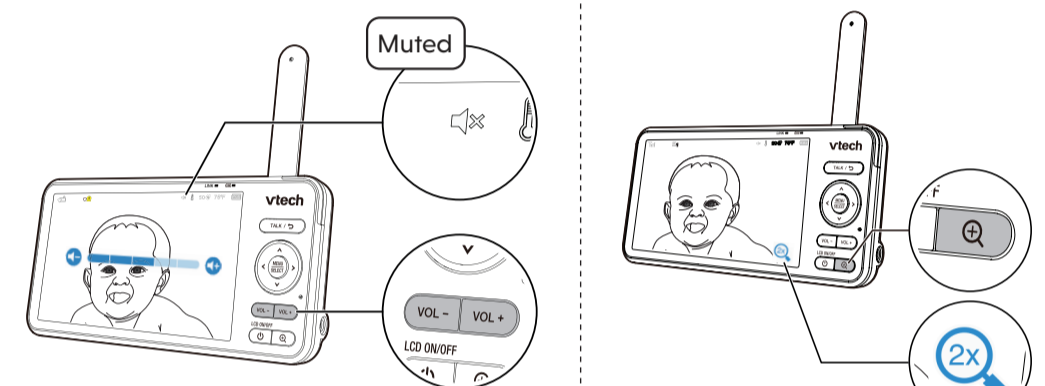
- Press **Left/Right/Down/Up** to scroll through the menu options.
- Press **SELECT** to select an item.
- Press **TALK** to return to the live video.

Adjust speaker volume

Press **VOL -** / **VOL +** to adjust the parent unit speaker volume level received from the baby unit.

Zoom

Press **Q** to zoom in or out in a fixed zoom sequence. **2x** indicates the image is magnified 2 times.



PROTECT YOUR PRIVACY AND ONLINE SECURITY

VTech cares about your privacy and peace of mind. That's why we've put together a list of industry-recommended best practices to help keep your wireless connection private and your devices protected when online. We recommend you carefully review and consider complying with the following tips.

Ensure your wireless connection is secure.

- Before installing a device, ensure your router's wireless signal is encrypted by selecting the "WPA2-PSK with AES" setting in your router's wireless security menu.
- Change your wireless router's default wireless network name (SSID) to something unique.
- Change default passwords to unique, strong passwords. A strong password:
 - Is at least 10 characters long.
 - Is complex.
 - Does not contain dictionary words or personal information.
 - Contains a mix of uppercase letters, lowercase letters, special characters and numbers.

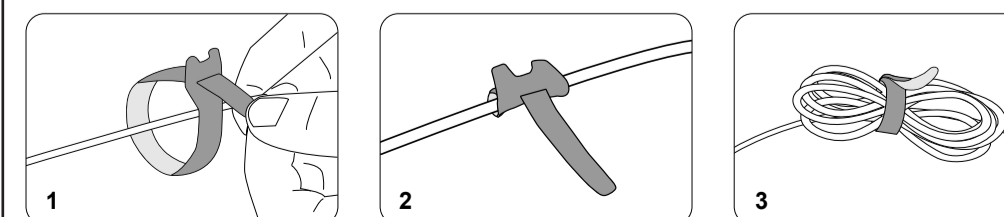
Keep your devices up to date.

- Download security patches from manufacturers as soon as they become available. This will ensure you always have the latest security updates.
- If the feature is available, enable automatic updates for future releases.
- Disable Universal Plug and Play (UPnP) on your router.
- UPnP enabled on a router can limit the effectiveness of your firewall by allowing other network devices to open inbound ports without any intervention or approval from you. A virus or other malware program could use this function to compromise security for the entire network.

For more information on wireless connections and protecting your data, please review the following resources from industry experts:

- Federal Communications Commission: Wireless Connections and Bluetooth Security Tips - www.fcc.gov/consumers/guides/how-protect-yourself-online.
- U.S. Department of Homeland Security: Before You Connect a New Computer to the Internet - www.us-cert.gov/ncas/tips/S13-003.
- Federal Trade Commission: Using IP Camera Safely - <https://www.consumer.ftc.gov/articles/0382-using-ip-cameras-safely>.
- Wi-Fi Alliance: Discover Wi-Fi Security - <http://www.wi-fi.org/discover-wi-fi-security>.

CABLE MANAGEMENT



AUTO SOFTWARE AND FIRMWARE UPDATE

To ensure that your HD video monitor is always at its best performance, the Parent Unit will prompt a message and ask you to update its software and the Baby Unit's firmware when there are new versions available. Select "Now" to reboot the system, or switch off and on the Parent Unit later to reboot the system into the latest software.

- To check if your device is running on the latest software, or to update your device software, go to:

> Software Update.

Connect your HD video monitor with home Wi-Fi network

You must connect your video monitor to your secured home Wi-Fi network in order to receive the latest software and firmware updates. To set the Wi-Fi up, go to:

> Configure Wi-Fi.

NOTE

- Make sure the Baby Unit is on when you set up the Wi-Fi network.

NEED HELP?

Driven by system updates, the software, online help topics, and online FAQs will be updated periodically. For operations and guides to help you using your HD video monitor, and for latest information and supports, go and check the online help topics and online FAQs.

- Go to <https://help.vtechphones.com/V2105>; OR

- Scan the QR code on the right. Launch the camera app or QR code scanner app on your smartphone or tablet. Hold the device's camera up to the QR code and frame it. Tap the notification to trigger the redirection of the online help.

- If the QR code is not clearly displayed, adjust your camera's focus by moving your device closer or further away until it is clear.

If you would like to contact us, visit <https://help.vtechphones.com/cs>.

You can also call our Customer Support at 1-844-848-8324 (1-844-84-VTECH) [in US] or 1-888-211-2005 [in Canada] for help.

GENERAL PRODUCT CARE

- To keep this product working well and looking good, follow these guidelines:
- Avoid placing it near heating appliances and devices that generate electrical noise (for example, motors or fluorescent lamps).
- DO NOT expose it to direct sunlight or moisture.
- Avoid dropping the product or treating it roughly.
- Clean with a soft damp cloth.
- DO NOT immerse the parent unit and the baby unit in water and do not clean under running water.
- DO NOT use cleaning spray or liquid cleaners.
- Make sure the parent unit and the baby unit are dry before you connect them to the mains again.

STORAGE

When you are not going to use the video monitor for some time, store the parent unit, the baby unit and the power adapters in a cool, dry location.

FREQUENTLY ASKED QUESTIONS

Below are the questions most frequently asked about the video monitor.

Can I turn the parent unit display screen off but keep hearing sounds from the baby unit?
Yes, press **LCD ON/OFF** on the parent unit to turn off the screen. The parent unit display will also dim automatically after being inactive for some time. In both instances, you will still be able to hear all sounds from the baby unit. Press any key to turn the screen back on.

Why is the baby unit not responding normally?
Try the following (in the order listed) for a common cure:
1. Disconnect the power to the baby unit.
2. Wait a few minutes before connecting power back to the baby unit.
3. Reboot the parent unit.

Why is my screen in black and white?
The baby unit has a light sensor that measures ambient light. When the ambient light is dim, such as during night time or in a dark room, the baby unit activates its infrared LEDs, and displays the camera images in black and white night vision.

Why does my baby unit show offline? Why is the connection lost every now and then?
The baby unit may have lost connection to the Wi-Fi router. Check your network and router settings.

Why can't I hear a sound/Why can't I hear my baby crying?
Other electronic products may cause interference with your baby unit. Try installing your baby unit as far away from these electronic devices as possible.

Why can't I hear a sound/Why can't I hear my baby crying?
The parent unit speaker volume may be too low. Press **VOL +** on the parent unit to increase the volume.

You may have set a low sound sensitivity level. Set the sound sensitivity to a higher level. For details, go to www.vtechphones.com for online help topics.

THE RBRC SEAL

The RBRC seal on the lithium-ion battery indicates that VTECH Communications, Inc. is voluntarily participating in an industry program to collect and recycle these batteries at the end of their useful lives, when taken out of service within the United States and Canada. The program provides a convenient alternative to placing used lithium-ion batteries into the trash or municipal waste, which may be illegal in your area. VTECH's participation makes it easy for you to drop off the spent product at local retailers participating in the program or at authorized VTECH product service centers. Please call 1(800) 8 BATTERY for information on lithium battery recycling and disposal bans/restrictions in your area. VTECH's involvement in this program is part of its commitment to protecting our environment and conserving natural resources.

The RBRC Seal and 1 (800) 8 BATTERY are registered trademarks of Call2recycle, Inc.

FCC AND IC REGULATIONS

FCC Part 15
NOTE: This equipment has been tested and found to comply with the requirements for a Class B digital device under Part 15 of the Federal Communications Commission (FCC) rules. These requirements are intended to provide a reasonable protection against harmful interference in a residential installation. This equipment generates, uses and can radiate radio frequency energy and, if not installed and used in accordance with the instructions, may cause harmful interference to radio communications. However, there is no guarantee that interference will not occur in a particular installation. If this equipment does cause harmful interference to radio or television reception, which can be determined by turning the equipment off and on, the user is encouraged to try to correct the interference by one or more of the following measures:
• Relocated or reoriented the receiving antenna.
• Increase the separation between the equipment and receiver.
• Connect the equipment into an outlet on a circuit different from that to which the receiver is connected.
• Consult the dealer or an experienced radio/TV technician for help.
WARNING: Changes or modifications to this equipment not expressly approved by the party responsible for compliance could void the user's authority to operate the equipment.
This device complies with Part 15 of the FCC rules. Operation is subject to the following two conditions: (1) this device may not cause harmful interference, and (2) this device must accept any interference received, including interference that may cause undesired operation.

To ensure safety of users, the FCC has established criteria for the amount of radio frequency energy that can be safely absorbed by a user or bystander according to the intended use of the product. This product has been tested and found to comply with the FCC criteria. The baby unit shall be installed and used such that parts of all persons' bodies are maintained at a distance of approximately 8 in (20 cm) or more. The transmitter and antenna of the parent unit shall be held at least 1 in (2.5 cm) from your face.
This Class B digital apparatus complies with Canadian requirements.
CAN ICES-3 (B)/NMB-3(B)

Industry Canada
This device contains licence-exempt transmitter(s)/receiver(s) that comply with Innovation, Science and Economic Development Canada's licence-exempt RSSB. Operation is subject to the following two conditions: (1) This device may not cause interference. (2) This device must accept any interference that may cause undesired operation of the device.
The term "IC" before the certification/registration number only signifies that the Industry Canada technical specifications were met. This radiation meets the applicable Innovation, Science and Economic Development Canada technical specifications.

RF radiation exposure statement
The product complies with FCC RF radiation exposure limits set forth for an uncontrolled environment. The baby unit should be installed and operated with a minimum distance of 8 in (20 cm) between the baby unit and all persons' body. Use of other accessories may not ensure compliance with FCC RF exposure guidelines. This equipment complies also with Industry Canada RSS-302 with respect to Canada's Health Code 6 for Exposure of Humans to RF Fields.

CALIFORNIA ENERGY COMMISSION BATTERY CHARGING TESTING MODE

This video monitor meets the California Energy Commission (CEC) regulations for energy consumption. Your video monitor is set up to comply with the energy-conserving standards right out of the box. Follow the instructions to install and charge the battery. The CEC battery charging testing mode is activated while charging. Even if the parent unit is paired to camera units, the CEC battery charging testing mode is activated while it is powered off and charging.

FOR CETL COMPLIANCE ONLY

La plaque signalétique appliquée est située au bas du socle de l'unité du bébé. Lorsque vous utilisez votre appareil, vous devez toujours suivre certaines mesures de précaution de base afin de réduire les risques d'incendie, d'électrocution et de blessures corporelles, dont ceux qui suivent:
1. Observez toutes les instructions et mises en garde inscrites sur l'appareil.
2. L'installation par un adulte est requise.
3. MISE EN GARDE: N'exposez pas l'unité du bébé à une hauteur supérieure à 2 mètres.
4. Ce produit a été conçu pour être un dispositif d'appoint seulement. Il n'est pas le remplacement d'une supervision responsable adéquate par un adulte et ne devrait pas être utilisé comme telle.
5. Ce produit n'est pas conçu pour être utilisé en tant que moniteur médical.
6. N'utilisez pas cet appareil près de l'eau ni de toute autre source d'humidité; par exemple, près d'une baignoire, cuve à lessive, évier de cuisine, dans un sous-sol humide ni près d'une piscine, piscine, étang, étanche, fontaine, etc. Il n'est pas en contact avec l'eau.
7. MISE EN GARDE: N'utilisez que la pile fournie. Il peut y avoir un risque d'explosion si un mauvais type de pile est utilisé pour le dispositif assorti. La pile ne peut pas être soumise à des températures extrêmes élevées ou basses et il est recommandé de ne pas l'exposer à la chaleur ou au froid. Si l'unité est utilisée pendant son transport, le fait de jeter la pile dans le feu ou dans un four chaud, ou d'écraser ou de couper mécaniquement la pile peut entraîner une explosion. Les unités placées dans un sac plastique contenant du gaz haute pression et extrêmement élevée peut entraîner une explosion ou une fuite de liquide ou une explosion. Une pile soumise à une pression d'air extrêmement basse peut provoquer une explosion dans la section. Les boutons RBRC.
8. Mettez au rebut la pile usagée conformément aux informations figurant sur l'étiquette. Ne sejournez pas dans le sac.
9. N'utilisez que les adaptateurs inclus avec ce produit. L'utilisation d'un adaptateur dont la polarité ou la tension serait inadéquate risque d'endommager sérieusement le produit et mettre votre sécurité en péril.

- 1. Observez toutes les instructions et mises en garde inscrites sur l'appareil.
- 2. L'installation par un adulte est requise.
- 3. MISE EN GARDE: N'exposez pas l'unité du bébé à une hauteur supérieure à 2 mètres.
- 4. Ce produit a été conçu pour être un dispositif d'appoint seulement. Il n'est pas le remplacement d'une supervision responsable adéquate par un adulte et ne devrait pas être utilisé comme telle.
- 5. Ce produit n'est pas conçu pour être utilisé en tant que moniteur médical.
- 6. N'utilisez pas cet appareil près de l'eau ni de toute autre source d'humidité; par exemple, près d'une baignoire, cuve à lessive, évier de cuisine, dans un sous-sol humide ni près d'une piscine, piscine, étang, étanche, fontaine, etc. Il n'est pas en contact avec l'eau.
- 7. MISE EN GARDE: N'utilisez que la pile fournie. Il peut y avoir un risque d'explosion si un mauvais type de pile est utilisé pour le dispositif assorti. La pile ne peut pas être soumise à des températures extrêmes élevées ou basses et il est recommandé de ne pas l'exposer à la chaleur ou au froid. Si l'unité est utilisée pendant son transport, le fait de jeter la pile dans le feu ou dans un four chaud, ou d'écraser ou de couper mécaniquement la pile peut entraîner une explosion. Les unités placées dans un sac plastique contenant du gaz haute pression et extrêmement élevée peut entraîner une explosion ou une fuite de liquide ou une explosion. Une pile soumise à une pression d'air extrêmement basse peut provoquer une explosion dans la section. Les boutons RBRC.
- 8. Mettez au rebut la pile usagée conformément aux informations figurant sur l'étiquette. Ne sejournez pas dans le sac.
- 9. N'utilisez que les adaptateurs inclus avec ce produit. L'utilisation d'un adaptateur dont la polarité ou la tension serait inadéquate risque d'endommager sérieusement le produit et mettre votre sécurité en péril.
- 10. Pour les appareils raccordés, la prise de courant de l'adaptateur secteur doit être installée près de l'équipement et doit être facilement accessible.
- 11. Débranchez ce produit de la prise de courant avant de procéder au nettoyage. N'utilisez pas de nettoyants en aérosols. Utilisez un chiffon humide pour le nettoyer.
- 12. Ne conservez pas cet appareil dans des endroits humides ou mouillés. Utilisez un chiffon humide pour remplacer les fiches, car ceci peut présenter un danger potentiel.
- 13. Ne laissez aucun objet reposer ni appuyer sur le cordon d'alimentation. N'utilisez pas cet appareil dans un endroit où l'on risque d'écraser le cordon d'alimentation ou de le piéliner.
- 14. Ne faites fonctionner cet appareil qu'avec le type d'alimentation indiqué sur l'étiquette. Si vous ne connaissez pas le type d'alimentation que vous possédez à votre domicile, contactez votre marchand ou votre compagnie locale d'électricité.
- 15. Ne surchargez pas les prises de courant murales ni les rallonges électriques.
- 16. Ne placez pas cet appareil sur un chariot, meuble, trépied, support de montage ni table oscillante.
- 17. Les trous et ouvertures du boîtier, situés à l'arrière de l'appareil ou sous celui-ci, sont des ouvertures destinées à protéger les composants électroniques contre les interférences des ondes radio, des téléphones sans fil, des radios, des appareils électroniques sans fil, des systèmes de chauffage, des systèmes de ventilation, des systèmes de refroidissement, des systèmes de climatisation, des systèmes de chauffage au sol, etc.
- 18. N'enfoncez jamais d'objets à travers les ouvertures de cet appareil, car ils pourraient entrer en contact avec des points de tension dangereuse ou causer des courts-circuits qui peuvent générer une incendie ou un risque d'électrocution. Ne retournez jamais de liquide dans ce produit.
- 19. Afin de réduire les risques d'électrocution, ne démontez pas cet appareil. Ne touchez pas aux composants internes.
- 20. L'ouverture du boîtier ou le retrait de toutes pièces que contient cet appareil, même pour effectuer certaines opérations, peut exposer à des points de tension dangereuse ou d'autres dangers. Un remède incorrect peut par la suite présenter des risques d'électrocution.
- 21. Vous devez tester la réception chaque fois que vous mettez l'appareil en fonction.
- 22. Examinez les composants afin de vérifier si celles-ci ne sont pas endommagées.
- 23. Il existe un très faible risque de perte de confidentialité. Avec certains appareils électroniques autres écoute-bébé, téléphones sans fil, etc. Pour l'éviter, assurez que le produit n'a jamais été utilisé avant l'achat, réinitialiser l'unité de fabrication. Étendez l'écoute-bébé quand il est pas en cours d'utilisation.
- 24. Les enfants devraient être supervisés afin de vous assurer qu'ils ne jouent pas avec l'appareil.
- 25. Les petites pièces de ce moniteur peuvent être avalées par les bébés ou les petits enfants. Veuillez tenir ces pièces hors de portée des enfants.
- 26. Le produit n'est pas conçu pour être utilisé par des personnes (incluant des enfants) aux capacités physiques, sensorielles ou mentales réduites ou qui manquent d'expérience et de connaissances, à moins qu'on leur ait donné suffisamment de supervision ou d'instructions relativement à l'utilisation de l'appareil par une personne responsable de leur sécurité.

CONSERVEZ CES INSTRUCTIONS
Mises en garde
• Utilisez et entreposez le produit à une température entre 0° C (32° F) et 40° C (104° F).
• Risque de choc électrique, risque d'incendie, risque d'explosion associé à une mauvaise manipulation de la batterie.
• Ne touchez pas cet appareil à des froids ou des chaleurs extrêmes, ainsi qu'à la lumière directe du soleil. Ne l'installez pas près d'une source de chauffage.

Avertissement - Risque de strangulation
Ne laissez pas les petites pièces de cet appareil accessibles à l'enfant.
• Les petits enfants peuvent être étouffés par les pièces ou les petits enfants.
• Ne laissez pas cet appareil accessible à l'enfant ou au parc de bébé. Ne laissez pas le moniteur ou l'unité (s) portable (s) accessible aux enfants.
• D'autres produits électroniques peuvent causer des interférences électromagnétiques (EMP) qui peuvent perturber le fonctionnement de cet appareil. Essayez d'installer votre caméra IP le plus loin possible de ces dispositifs électroniques tels que: téléphones sans fil, systèmes de chauffage, des systèmes de ventilation, des systèmes de refroidissement, des systèmes de climatisation, des systèmes de chauffage au sol, etc.

Stimulateurs cardiaques implantés dans l'organisme
Les stimulateurs cardiaques (ne s'applique qu'aux dispositifs médicaux) peuvent être affectés par les champs électromagnétiques (CEM) d'intensité élevée.
• L'organisme "Wireless Technology Research, LLC (WTR)" vous recommande de limiter votre exposition aux ondes radio, à la pollution électromagnétique, et aux interférences des téléphones sans fil (WTR) pendant votre utilisation de cet appareil.
• Consultez votre médecin ou votre fournisseur de soins de santé pour plus de renseignements.
• Approuvé par l'Administration des aliments et drogues (FDA) des États-Unis, le WTR recommande aux consommateurs:
Aviz aux détenteurs de stimulateurs cardiaques:
• Vous devez maintenir les dispositifs sans fil à au moins six (6) pouces du stimulateur cardiaque.
• Ne touchez pas le téléphone sans fil directement sur le stimulateur cardiaque, tel que dans une poche de chemise, ou lorsque celle-ci est en marche.

Champs électromagnétiques (EMP)
Ce produit de VTECH est conforme à toutes les normes se rapportant aux champs électromagnétiques (EMF) standards. Si vous le manipulez correctement en suivant les instructions de ce guide, son utilisation sera sécuritaire pendant de nombreuses années, selon les meilleures connaissances scientifiques dont nous disposons aujourd'hui.

Champs électromagnétiques (EMP)
Ce produit de VTECH est conforme à toutes les normes se rapportant aux champs électromagnétiques (EMF) standards. Si vous le manipulez correctement en suivant les instructions de ce guide, son utilisation sera sécuritaire pendant de nombreuses années, selon les meilleures connaissances scientifiques dont nous disposons aujourd'hui.

LIMITED WARRANTY

What does this limited warranty cover?
The manufacturer of this VTECH Product warrants to the holder of a valid proof of purchase ("Consumer" or "you") that the Product and all accessories provided in the sales package ("Product") are free from defects in material and workmanship, pursuant to the following terms and conditions, when installed and used normally and in accordance with the Product operating instructions. This limited warranty extends only to the Consumer for Products purchased and used in the United States of America and Canada.

What will VTECH do if the Product is not free from defects in materials and workmanship during the limited warranty period ("Materially Defective Product")?
During the limited warranty period, VTECH's authorized service representative will replace at VTECH's option, without charge, a Materially Defective Product. If we choose to replace the Product, we may replace it with a new or refurbished Product of the same or similar design. We will return defective parts, modules, or equipment. Replacement of the Product, at VTECH's option, is your exclusive remedy. VTECH will return the replacement Products to you in working condition. You should expect the replacement to take approximately 30 days.

How long is the limited warranty period?
The limited warranty period for the Product extends for ONE (1) YEAR from the date of purchase (90 days on products purchased as Refurbished). This limited warranty also applies to the replacement Product for a period of either (a) 90 days from the date the replacement Product is shipped to you or (b) the time remaining on the original one-year warranty, whichever is longer.

What's not covered by this limited warranty?
This limited warranty does not cover:
1. Product that has been subjected to misuse, accident, shipping or other physical damage, improper installation, abnormal operation or handling, neglect, inundation, fire, water or other liquid intrusion; or
2. Product that has been damaged due to repair, alteration or modification by anyone other than an authorized service representative of VTECH; or
3. Product to the extent that the problem experienced is caused by signal conditions, network reliability, cable or antenna systems; or
4. Product to the extent that the problem is caused by use with non-VTECH accessories; or
5. Product whose warranty/quality stickers, product serial number plates or electronic serial numbers have been removed, altered or rendered illegible; or
6. Product purchased, used, serviced, or shipped for repair from outside the United States of America or Canada, or used for commercial or institutional purposes (including but not limited to Products used for rental purposes); or
7. Product returned without a valid proof of purchase (see item 2 below); or
8. Charges for installation or set up, adjustments of customer controls, and installation or repair of customer control unit.

How do you get warranty service?
To obtain warranty service in the USA, please visit our website at www.vtechphones.com or call 1 (800) 595-9511. In Canada, go to www.vtechcanada.com or call 1 (800) 267-7377.
NOTE: Before calling for service, please review the user's manual - a check of the Product's controls and features may save you a service call.
Except as provided by applicable law, you assume the risk of loss or damage during transit and transportation and are responsible for delivery or handling charges incurred in the transport of the Product