

Go to www.vtechphones.com to register your product for enhanced warranty support and latest VTech product news.

VC1405
5" HD Screen
Smart Nursery Monitor



For more support information



Congratulations

on purchasing your new VTech product. Before using this baby monitor, please read the **Important safety instructions**. For support, shopping, and everything new at VTech, visit our website at www.vtechphones.com. In Canada, visit www.vtechcanada.com.

What does HD Video Monitor do?

VTech 5" HD Screen Smart Nursery Monitor allows you to stay close to your baby when you are on the move or away. This monitor is Wi-Fi enabled, using your home wireless network to stream live video and audio through the 1080p baby unit and 5-inch color screen parent unit. It allows you to maintain a constant connection to your baby.

You can also monitor from your smartphone or mobile tablet. VTech 5" HD Screen Smart Nursery Monitor uses **MyVTech Baby Plus** app to let you instantly see and hear what's happening with your baby from anywhere in the world. The app can be downloaded from the App Store or the Google Play™ Store. The full HD (1080p) resolution is visible in the app only.

IMPORTANT SAFETY INSTRUCTIONS

The applied nameplate is located at the bottom of the baby unit base. When in use, basic safety precautions should always be followed to reduce the risk of fire, electric shock and injury, including the following:

- Follow all warnings and instructions marked on the product.
- Adult setup is required.
- CAUTION:** Do not install the baby unit at a height above 6.5 feet (2 meters).
- This product is intended as an aid. It is not a substitute for responsible and proper adult supervision and should not be used as such.
- This product is not intended for use as a medical monitor.
- Do not use this product near water, for example, near to a bath, sink, swimming pool or shower.
- CAUTION:** Use only the internally, non-user replaceable battery fitted to the parent unit. There may be a risk of explosion if a wrong type of battery is used for the parent unit. The battery cannot be subjected to high or low extreme temperature and low air pressure at high altitude during use, storage or transportation. Disposal of batteries in fire or a hot oven, mechanically crushing or cutting the battery can result in an explosion. Subjecting products or batteries to an extremely high temperature environment can result in explosion or leakage of flammable liquids, or gas. Products or batteries subjected to extremely low air pressures may result in explosion or leakage of flammable liquids, or gas. Dispose of used batteries according to the information in the **RBBC seal**.
- Use only the power adapters supplied with this product. Incorrect power adapter polarity or voltage can seriously damage the product.

Power adapter information:
Baby Unit Output: 5V DC 1.5A
VTech Telecommunications Ltd.
Model: V107EU505150
Parent Unit Output: 5V DC 2A
VTech Telecommunications Ltd.
Model: V107EU505200

Rechargeable battery information:
3.7V 5000mAh, 18.5Wh Lithium-ion battery
Zhuhai Great Power Energy Co., Ltd.
Model: GSP806090-5Ah-3.7V-1S1P

- The power adapter is intended to be correctly oriented in a vertical or floor mount position. The prongs are not designed to hold the plug in place if it is plugged into a ceiling, under-the-table or cabinet outlet.
- For pluggable equipment, the socket-outlet (power adapter) should be installed near the equipment and should be easily accessible.
- Unplug this product from the wall outlet before cleaning. Do not use liquid or aerosol cleaners. Use a damp cloth for cleaning.
- Do not modify the power adapters or replace with other third-party adapters.
- Do not allow anything to rest on the power cords. Do not install this product where the cords may be walked on or damaged.
- The product should only be operated from a power source indicated on the power adaptor label or marking. If you are unsure of the type of power supply in your home, consult your dealer or electricity supply provider.
- Do not overload wall outlets or use an extension cord.
- Do not place this product on an unstable table, shelf, stand or other unstable surfaces.
- This product should not be placed in any area where proper ventilation is not provided. Any slots or openings in the back or bottom of this product are provided for ventilation. To protect from overheating, openings must not be blocked by placing the product on a soft surface such as a bed, sofa or rug. This product should never be placed near or over a radiator or heat source.

SAVE THESE INSTRUCTIONS

- Use and store the product at a temperature between 32°F (0°C) and 104°F (40°C).
- Mishandling batteries can cause burn, fire or explosion hazards.
- Batteries should not be exposed to excessive heat such as bright sunshine or fire.
- Do not expose the product to extreme cold, heat or direct sunlight. Do not place the product close to a heating source.

- Warning—Strangulation Hazard—Children** have STRANGLED in cards. Keep this cord out of the reach of children (more than 3 ft (0.9m) away). Do not remove warning label on the adapter cord.
- Never place the camera unit(s) inside the baby's crib or playpen. Never cover the camera unit(s) or parent unit with anything such as a towel or a blanket.
- Other electronic products can cause interference to your parent unit and baby unit. Try installing your baby unit as far away as possible from the following electronic devices: wireless routers, radios, mobile telephones, intercoms, room monitors, televisions, personal computers, kitchen appliances (e.g. microwave ovens) and cordless telephones.

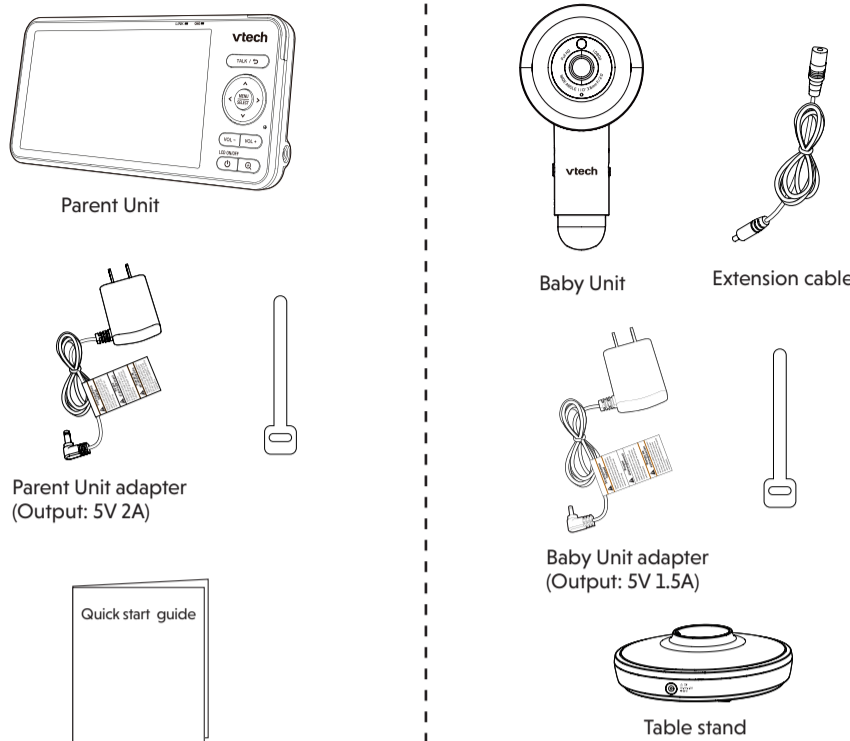
Precautions for users of implanted cardiac pacemakers: Cardiac pacemakers (applies only to digital cordless devices): Wireless Technology Research, LLC (WTR), an independent research entity, led a multidisciplinary evaluation of the interference between portable wireless devices and implanted cardiac pacemakers. Supported by the U.S. Food and Drug Administration, WTR recommends to physicians that: **Pacemaker patients**

- Should keep wireless devices at least six inches from the pacemaker.
- Should NOT place wireless devices directly over the pacemaker, such as in a breast pocket, when it is turned ON. WTR's evaluation did not identify any risk to bystanders with pacemakers from other persons using wireless devices.

Electromagnetic fields (EMF): This VTech product complies with all standards regarding electromagnetic fields (EMF), if handled properly and according to the instructions in this manual. This product is safe to be used based on scientific evidence available today.

WHAT'S IN THE BOX

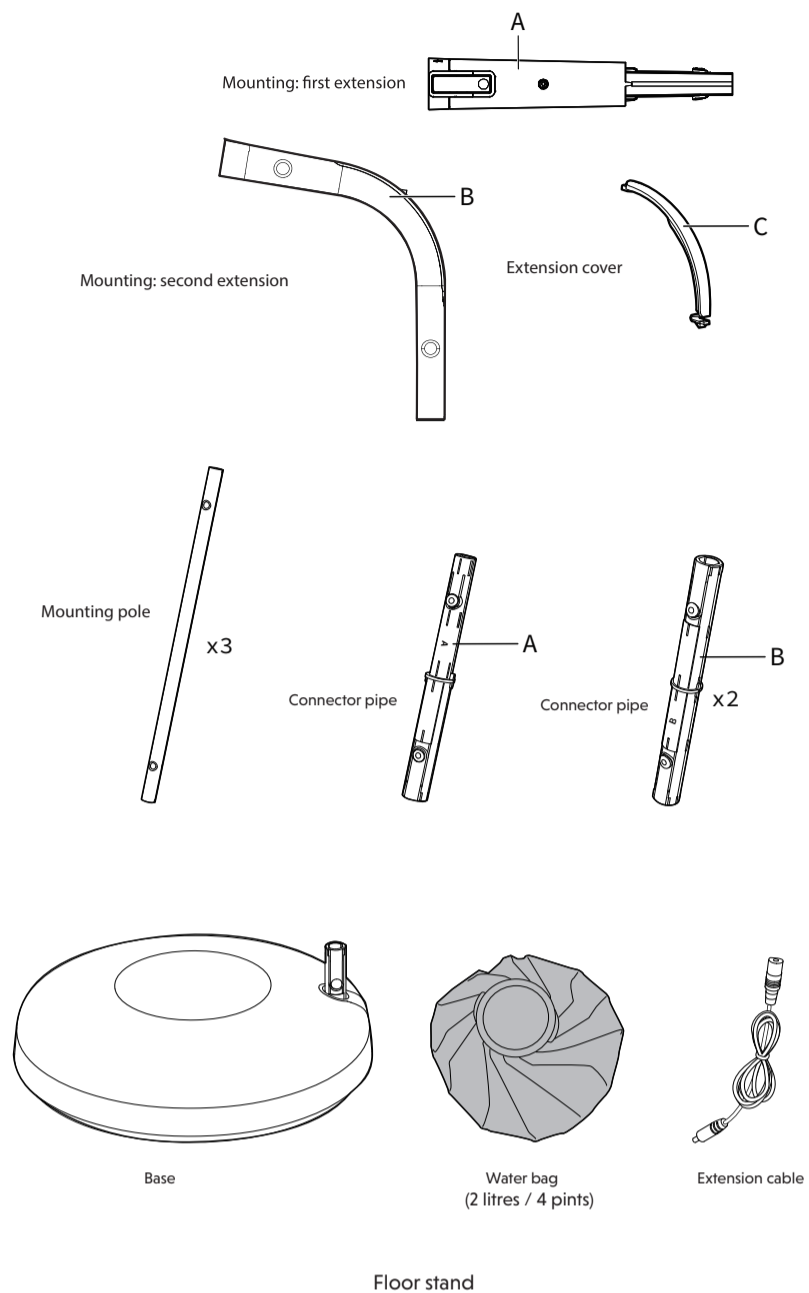
Your baby monitor package contains the following items. Save your sales receipt and original packaging in the event warranty service is necessary.



Requirements

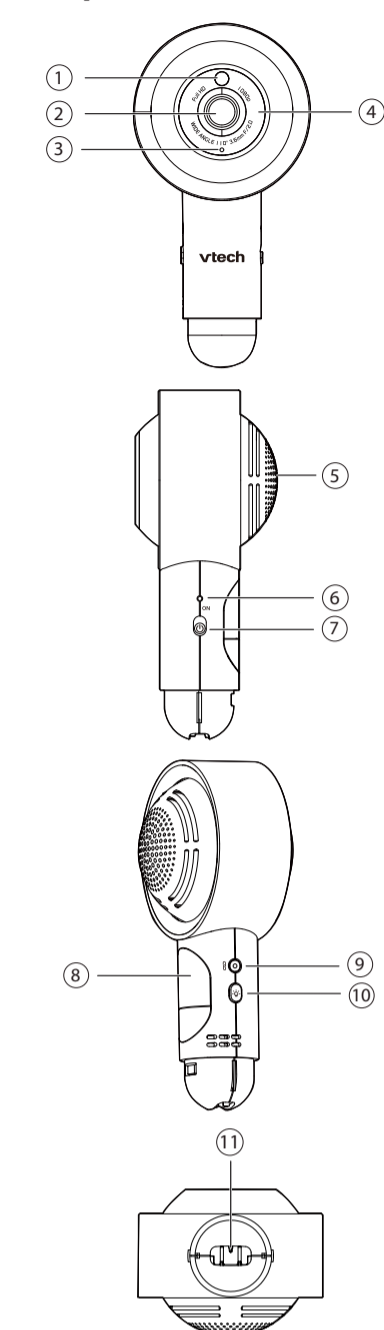
For mobile access:

MyVTech Baby Plus mobile app	
Network	Wi-Fi
Wi-Fi router	2.4GHz 802.11 b/g/n
Internet connection	1.5 Mbps @ 720p or 2.5 Mbps @ 1080p upload bandwidth per baby unit



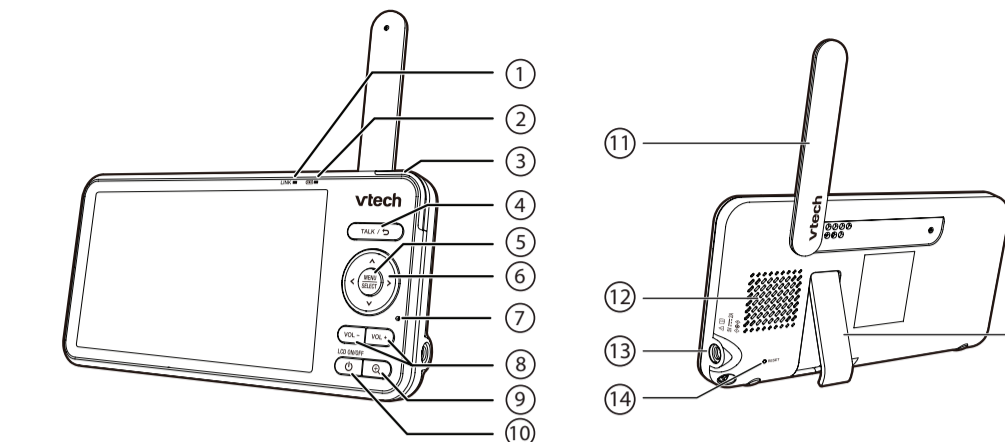
OVERVIEW

Baby unit overview



- Light sensor**
- Camera lens**
- Microphone**
- Infrared LEDs**
 - Allow you to see clearly in a dark environment.
- Speaker**
- LED indicator**
 - Steadily on, then off, when the baby unit is connected to the parent unit.
- ON/OFF switch**
 - Power it on or off.
- Night light**
- Link**
 - Reserve for pairing the parent unit.
- Night light switch**
 - Press to turn the night light on or off.
- Power connector**

Parent unit overview



- LINK LED light**
 - On when the parent unit is linked to the baby unit.
 - Flashes when the link to the baby unit has lost.
- LED light**
 - On when the parent unit is connected to AC power, and the battery is charging.
 - Flashes when the parent unit battery is low and needs to be charged.
- 3-level sound indicator light**
 - Green: low sound level is detected by the baby unit.
 - Green and amber: moderate sound level is detected by the baby unit.
 - Green, amber and red: high sound level is detected by the baby unit.
- TALK /**
 - Press **and hold** to talk to the baby unit.
 - While in a sub-menu, press to return to the previous menu.
- MENU | SELECT**
 - Press to enter the main menu.
 - While in a menu, press to confirm a selection, or save a setting.
- Arrow keys**
 - Press to navigate left, right, up and down within the main and sub-menus.
 - While viewing a zoomed image, press to move the viewed image left, right, up and down.
- Microphone**
 - Increase or decrease parent unit volume.
- VOL - | VOL +**
 - Press to zoom in/out.
- Power | LCD ON/OFF**
- Antenna**
- Speaker**
- Power jack**
- RESET**
 - Force reboot the parent unit.
- Stand**

TECHNICAL SPECIFICATIONS

Transmit frequency	Baby unit: 2412 - 2462 MHz Parent unit: 2412 - 2462 MHz
Channels	11
LCD	5" Color LCD (IPS 1280x720 pixels)
Nominal effective range	Maximum power allowed by FCC and IC. Actual operating range may vary according to environmental conditions at the time of use.
Power requirement	Baby unit power adapter: Output: 5V DC, 1.5A Parent unit power adapter: Output: 5V DC, 2A Parent unit battery: 3.7V 5000mAh, 18.5Wh Lithium-ion battery

DISCLAIMER AND LIMITATION OF LIABILITY

VTech Communications, Inc. and its suppliers assume no responsibility for any damage or loss resulting from the use of this user's manual. VTech Communications, Inc. and its suppliers assume no responsibility for any loss or claims by third parties that may arise through the use of this product.

Company: VTech Communications, Inc.
Address: 9020 SW Washington Square Road - Ste 555 Tigard, OR 97223, United States
Phone: 1 (800) 595-9511 in the U.S. or 1 (800) 267-7377 in Canada

Our products are NOT medical devices. They are not intended for use as medical devices or to replace medical devices. They shall not be relied upon for any type of clinical monitoring. They are not designed to and are not intended to diagnose, treat, cure, mitigate, alleviate or prevent any disease or other condition, including but not limited to, sudden infant death syndrome (SIDS).

Our products are only intended to assist you in tracking your baby's general sleep patterns. False positive or false negative readings about your baby's sleep patterns are a potential risk of our products. Our products are not a substitute for medical consultation and treatment or adult supervision and care.

Android™ and Google Play™ are trademarks of Google Inc.
App Store is a trademark of Apple Inc., registered in the U.S. and other countries.
iOS is a trademark or registered trademark of Cisco in the U.S. and other countries and is used under license.



CONFORMS TO
UL 1642
CERTIFIED TO
UL 1642
E22-1 NO 43286-1



Specifications are subject to change without notice.
© 2024 VTech Communications, Inc.
All rights reserved. 05/24. VC1405_US_QSG_V1

INSTALL THE FLOOR STAND

- Insert the First extension (A) onto the Second extension (B), aligning the slot in between. Make sure the DC socket is out on opening of the Second extension and ready for connection.
- Let the cable jack of the Extension cable pass through from the back of the base.
- Pick one pole and pass the cable jack through the pole, then connect the pole with the Base.
- Pass the cable jack through the connector pipe (A), then connect the pipe with the third pole.
- Pass the cable jack through the Second extension (B), to the opening. Then connect the Second extension (B) to the connector pipe (A).
- Place the floor stand near the crib. Open the base cover and place the filled water bag (2 litres / 4 pints) into the base, to help prevent the stand from falling. Replace the base cover.
- Connect the cable jack with the DC socket, then secure the cable with the Extension cover (C).
- Connect the cable jack through the connector pipe (B), the second pole, the second connector pipe (B), and the third pole in turn. Align the slot between the poles and connector pipes (B) and connect all three poles firmly with the pipes.



Scan QR code to watch installation video.

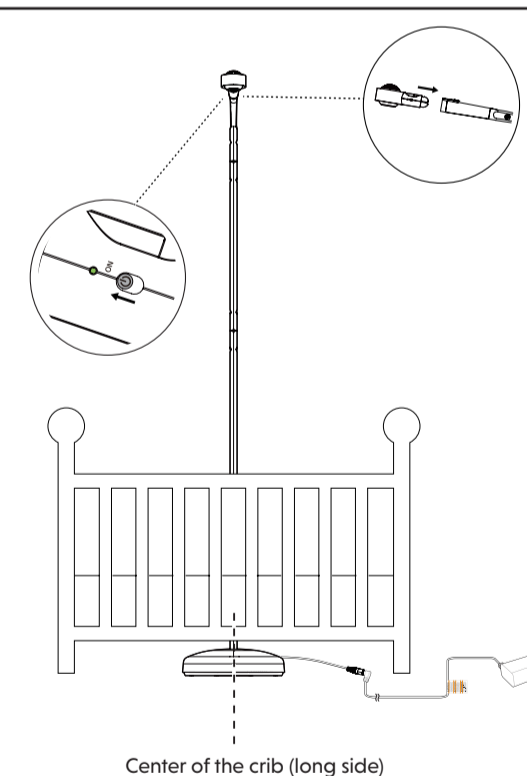
Floor stand installation is completed.

INSTALL AND POWER ON THE BABY UNIT

Installation with floor stand

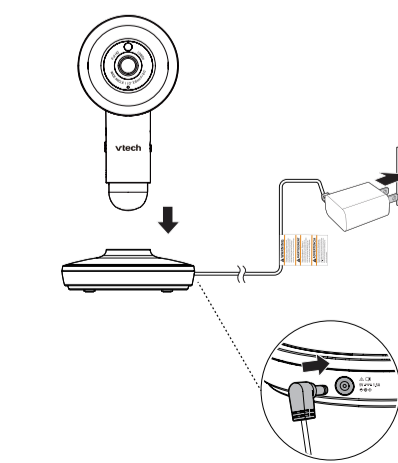
Install the baby unit onto the First extension (A), and connect the adapter to the end of the cable and the power supply to power up the baby unit.

Slide the switch to **ON** to power your baby unit on.



Installation with table stand (for toddler stage)

Connect the baby unit power connector to the table stand, then plug the power adapter to the power jack and a power supply.



NOTES

- When powering up, the baby unit's status LED turns on. It will turn off after a while and remains off.
- The status LED is set to off by default.
- Once connect to the table stand, sleep summary, face covering, baby awake and asleep detections will be disabled, while danger zone detection will enable.
- The baby unit may get warm during use. This is normal.

DOWNLOAD APP FOR MOBILE ACCESS

1. App installation

a) From parent unit

NOTE

- Before installing the app, please connect your baby monitor to your Wi-Fi network.

Press **MENU** on the parent unit, go to > .

- Press **MENU** when the parent unit is idle.

- Go to > > **Connect Mobile Phone**.

- Scan the QR code in below or search the app with keyword "myvtech baby plus" to download the app into your mobile phone if you have not installed the app yet.

b) From app store

- Browse the App Store or the Google Play store .
- Search for the mobile app with the keyword "myvtech baby plus".
- Download and install the **MyVTech Baby Plus** mobile app to your mobile device.

OR

Scan the QR code on the right to get the app.

NOTE

- Make sure your mobile device meets the minimum requirement for the mobile app.

Minimum requirement

The mobile app is compatible with:

- Android™ 9.0 or later (Android devices with 32-bit system are not compatible); and
- iOS 14 or later.

2. Set up user account

In your mobile device:

- Tap to run the mobile app, and then create a user account.
- We recommend that you use common webmail services, such as Google Gmail for registration of your user account. Check your email (and Spam folder), and activate your new camera account via the email link, then sign in to your account.

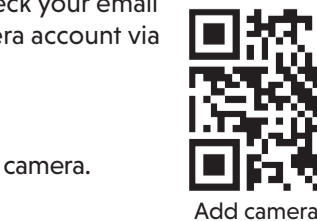
3. Add camera

Follow the instructions in the mobile app to pair the camera.



Download on the App Store

GET IT ON Google Play



Add camera setup

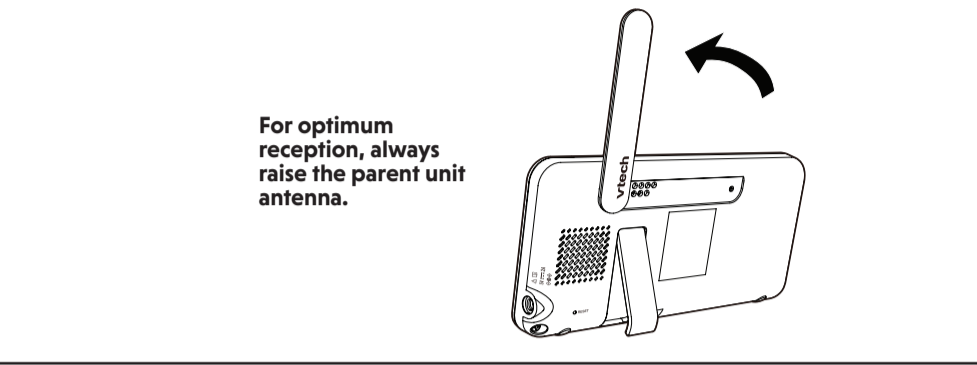
CONNECT, CHARGE AND POWER ON THE PARENT UNIT

Connect the baby monitor

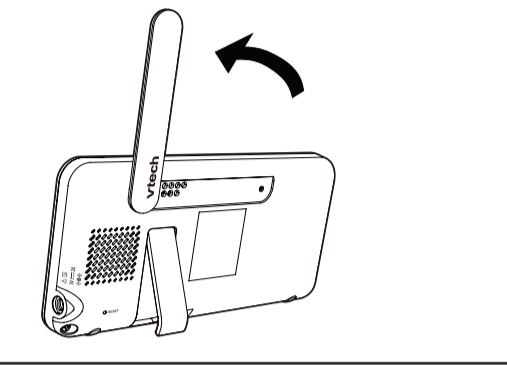
- NOTES**
- The rechargeable battery in the parent unit is built-in.
 - Use only the power adapters supplied with this product.
 - Make sure the parent unit and the baby unit are not connected to an electronically/timer controlled electric outlet.
 - Connect the power adapters in a vertical or floor mount position only. The adapter prongs are not designed to hold the weight of the parent unit, so do not connect them to any ceiling, under-the-table, or cabinet outlets. Otherwise, the adapter may not properly connect to the outlets.
 - Make sure the parent unit, the baby unit and the power adapter cords are out of reach of children.

The battery icon indicates the battery status (see the following table).

BATTERY INDICATORS	BATTERY STATUS	ACTION
and are displayed on the screen: The red LED light flashes. The battery icon segments are solid .	The battery has very little charge and may be used for only a short time.	Charge without interruption (about 30 minutes).
	The battery is fully charged.	To keep the battery charged, connect it to AC power when in use.



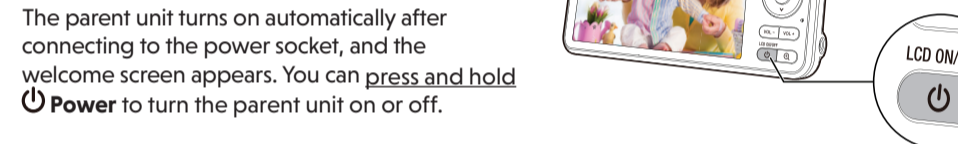
For optimum reception, always raise the parent unit antenna.



Charge the parent unit battery before use

The parent unit runs on an internal rechargeable battery or AC power. To continuously monitor your baby, keep the parent unit connected to AC power.

- NOTES**
- Before using the baby monitor for the first time, charge the parent unit battery for 12 hours. When the parent unit battery is fully charged, the battery icon segments are solid .
 - The standby time varies depending on your actual use.



The parent unit turns on automatically after connecting to the power socket, and the welcome screen appears. You can press and hold **Power** to turn the parent unit on or off.

Status icons

- Direct mode**
The parent unit and baby unit connect to each other directly. The red bar(s) indicate no connection.
- Router mode**
The parent unit and baby unit connect via the home Wi-Fi network. The red icon(s) on the baby unit or parent unit, indicates no connection between the respective unit(s) and the router.
- Night vision is turned on.
Motion detection alert is turned on.
Cry alert is turned on.
Face not in full view alert is turned on.
Danger zone alert is turned on.
- Melodies and soothing sounds are playing.**
Night light is turned on.
Auto night light brightness is activated.
Temperature alert is turned on.
Parent unit is muted.
Humidity
Temperature
Battery level indicator
Low battery indicator

PARENT UNIT ICONS

Main Menu

- Sub-menu Options**
- Night light**
 - On/Off** - Toggle the night light on or off.
 - Color**
 - Select a night light color.
 - Customized color is available if your baby unit is paired with MyVtech Baby Plus app.
 - Brightness**
 - Adjust night light brightness.
 - Set the brightness to AUTO adaptive ambient.
 - Timer**
 - Set the timer to turn the night light off after 15, 30 or 60 minutes, or always on.
 - Melodies and soothing sounds**
 - Play/Stop** - Toggle between play and stop.
 - Library**
 - Select to play all melodies, or play one of the five melodies or five soothing sounds.
 - Camera Volume**
 - Adjusts baby unit speaker volume.
 - Timer**
 - Set the timer to stop playing after 15, 30 or 40 minutes, or play non-stop.
 - General settings**
 - Camera Connection**
 - Connect to home Wi-Fi network.
 - Connect mobile phone.
 - Camera Volume**
 - Adjusts baby unit speaker volume.
 - Screen Brightness**
 - Adjusts parent unit screen brightness.
 - Screen Off Timer**
 - Turn the screen off timer OFF, or set the screen to turn on after 1, 3 or 5 minutes when no sound is detected.
 - Select **Auto** to set the **Sound Sensitivity level** for the screen to auto turn on when a sound level is detected that is higher than the set level. The screen will turn off after 50 seconds of no sound detection.

Main Menu

- Sub-menu Options**
- Temperature Format**
 - Set the temperature display format between Celsius or Fahrenheit.
 - Others**
 - Time Settings, Reset Settings, Software Update.
 - Alerts Settings**
 - Adjusts the alert tone volume level.
 - Motion Detect**
 - Turn the motion detection alert on/off.
 - Adjust **Motion Sensitivity Level** for waking the parent unit screen.
 - Temperature**
 - Turn the temperature alert on/off.
 - Select the temperature alert maximum and minimum temperature limits.
 - Humidity**
 - Turn the humidity detection alert on/off.
 - Select the humidity alert maximum and minimum humidity limits.
 - Cry Detect**
 - Turn the cry alert on/off.
 - Face Not In Full View (Floor stand only)**
 - Turn the face not in full view alert on/off.
 - Danger Zone (Table stand only)**
 - Turn the danger zone alert on/off.
 - Low battery**
 - Turn the low battery alert on/off.
 - Lost link**
 - Turn the lost link alert on/off.
 - Help and info**
 - Support Information
 - Support video
 - System Info
 - System Information

HOW THE SYSTEM WORKS

TIP For better security and more stable connectivity, this baby monitor requires connecting to a 2.4GHz home Wi-Fi network and operating in Router mode connection.

Direct mode
Your baby monitor parent unit and baby unit connect to each other in Direct mode by default, which allows you to immediately stream video out of the box. **It is NOT recommended to continue using Direct Mode connection after initial installation.**



Router mode

You are required to set up your monitor in **Router mode** to enjoy live video streaming via your parent unit with an enhanced connection. **Router mode** is the recommended mode for stable connectivity.



If you want to stream live video remotely with your mobile phone, download and install the **MyVtech Baby Plus** mobile app. With the mobile app, your Wi-Fi router (not included) provides Internet connectivity to your HD video monitor system. It serves as a communication channel between your baby unit and mobile phone, allowing you to monitor and/or control your baby unit wherever you are. For more details, see **Download app for mobile access** section in this quick start guide.

- NOTE**
- When both parent unit and app are viewing the camera simultaneously, the video quality will be optimized to deliver the best possible viewing result.

BASIC OPERATION

After powering up your baby monitor, the parent unit streams live video in direct mode. We recommend you follow the instructions on-screen to set up home Wi-Fi network with your monitor for functionality enhancements and mobile access. See **Auto software and firmware update and Download app for mobile access** in this Quick Start Guide.

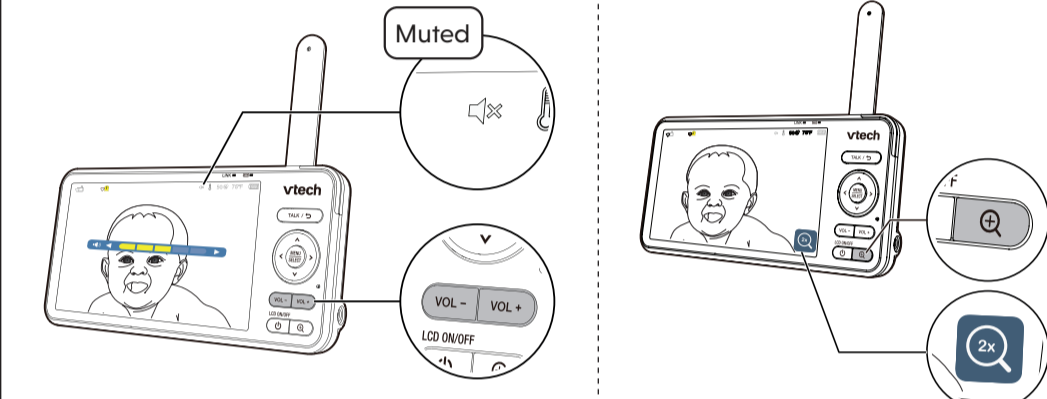
Use the menu

Press **MENU** on the parent unit to enter the main menu, choose a menu item, or save a setting. You can use the parent unit menu for advanced settings or operations, such as to play or stop the baby unit lullaby, or adjust the baby unit sound sensitivity.

- While in the menu:
- Press **Left/Right/Up/Down** to scroll through the menu options.
 - Press **SELECT** to enter an item.
 - Press **Return** to return to the previous menu or live video.

Adjust speaker volume

Press **VOL -** or **VOL +** to adjust the parent unit speaker volume level received from the baby unit.



Talk to your baby via the baby unit

- Press and hold the **TALK** key.
- When the icon displays on screen, speak to your parent unit. Your voice is transmitted to the baby unit.
- When finished talking, release the **TALK** key to hear your baby again.

Turn on/off the parent unit screen

You can turn on or turn off the parent unit screen without powering off the unit. You will still hear sounds from the baby unit.

- Press **ON/OFF** on the parent unit to turn the screen on/off.
- Press any key on the parent unit to turn the screen on again.

TIP

To restore to the default settings or reset the Wi-Fi connection, you can reset the parent unit by inserting a pin or paper clip into the **RESET** hole on the back of the parent unit and gently press the button inside. Alternatively, you can reset by accessing the menu, selecting **Others**, and finally choosing **Reset Settings**.

PROTECT YOUR PRIVACY AND ONLINE SECURITY

Vtech cares about your privacy and peace of mind. That's why we've put together a list of industry-recommended best practices to help keep your wireless connection private and your devices protected when online. We recommend you carefully review and consider complying with the following tips.

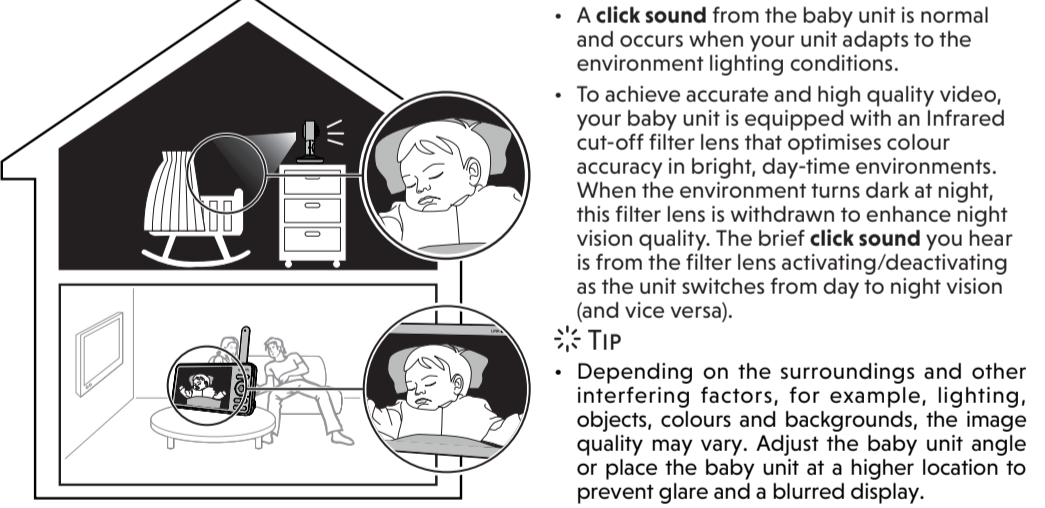
- Ensure your wireless connection is secure.
- Before installing a device, ensure your router's wireless signal is encrypted by selecting the "WPA2-PSK with AES" setting in your router's wireless security menu.
 - Change your wireless router's default wireless network name (SSID) to something unique.
 - Change default passwords to unique, strong passwords. A strong password:
 - Is at least 8 characters long.
 - Is complex.
 - Does not contain dictionary words or personal information.
 - Contains a mix of uppercase letters, lowercase letters, special characters and numbers.

- Keep your devices up to date.
- Download security patches from manufacturers as soon as they become available. This will ensure you always have the latest security updates.
 - If the feature is available, enable automatic updates for future releases.
 - Disable Universal Plug and Play (UPnP) on your router.
 - UPnP enabled on a router can limit the effectiveness of your firewall by allowing other network devices to open inbound ports without any intervention or approval from you. A virus or other malware program could use this function to compromise security for the entire network.

- For more information on wireless connections and protecting your data, please review the following resources from industry experts:
- Federal Communications Commission: Wireless Connections and Bluetooth Security Tips - www.fcc.gov/consumers/guides/how-protect-yourself-online.
 - U.S. Department of Homeland Security: Before You Connect a New Computer to the Internet - www.us-cert.gov/ncas/tips/T13-003.
 - Federal Trade Commission: Using IP Cameras Safely - <https://www.consumer.ftc.gov/articles/0382-using-ip-cameras-safely>.
 - Wi-Fi Alliance: Discover Wi-Fi Security - <http://www.wi-fi.org/discover-wi-fi-security>.

NIGHT VISION

The baby unit has infrared LEDs that allow you to see your baby clearly at night or in a dark room. When the baby unit detects low light levels, the infrared LEDs are switched on automatically. The images from the baby unit are in black and white, and appears on the parent unit screen.



AUTO SOFTWARE AND FIRMWARE UPDATE

To ensure that your HD video monitor is always at its best performance, the Parent Unit will prompt a message and ask you to update its software and the Baby Unit's firmware when there are new versions available. Select "Now" to reboot the system, or switch off and on the Parent Unit later to reboot the system into the latest software.

- To check if your device is running on the latest software, or to update your device software, go to:
 - Software Update.**

Connect your HD video monitor with home Wi-Fi network
You must connect your video monitor to your secured home Wi-Fi network in order to receive the latest software and firmware updates. To set the Wi-Fi up, go to:

- Configure Wi-Fi.**

- NOTE**
- Make sure the Baby Unit is on when you set up the Wi-Fi network.

GENERAL PRODUCT CARE

To keep this product working well and looking good, follow these guidelines:

- Avoid placing near heating appliances and devices that generate electrical noise (for example, motors or fluorescent lamps).
- DO NOT expose to direct sunlight or moisture.
- Avoid dropping the product or treating it roughly.
- Clean with a soft damp cloth.
- DO NOT immerse the parent unit or the baby unit in water and do not clean under running water.
- DO NOT use solvents, household cleaning sprays, or liquid cleaners.
- Make sure the parent unit and the baby unit are dry before reconnecting to the mains supply.

STORAGE

When you are not going to use the video monitor for some time, store the parent unit, the baby unit and the power adapters in a cool, dry location.

NEED HELP?

Driven by system updates, the software, online help topics, and online FAQs will be updated periodically. For operations and guides to help you using your HD video monitor, and for latest information and supports, go and check the online help topics and online FAQs.

- Go to <https://help.vtechphones.com/VC1405>, OR
- Scan the QR code on the right. Launch the camera app or QR code scanner app on your smartphone or tablet. Hold the device's camera up to the QR code and frame it. Tap the notification to trigger the redirection of the online help.
- If the QR code is not clearly displayed, adjust your camera's focus by moving your device closer or further away until it is clear.

If you would like to contact us, visit <https://help.vtechphones.com/cs>.
You can also call our Customer Support at 1-844-848-8324 (1-844-84-VTECH) [in US] or 1-888-211-2005 [in Canada] for help.

THE RBRC SEAL

The RBRC seal on the lithium-ion battery indicates that Vtech Communications, Inc. is voluntarily participating in an industry program to collect and recycle these batteries at the end of their useful lives, when taken out of service within the United States and Canada. The program provides a convenient alternative to placing used lithium-ion batteries into the trash or municipal waste, which may be illegal in your area.

Vtech's participation makes it easy for you to drop off the spent product at local retailers participating in the program or at authorized Vtech product service centers. Please call 1 (800) 8 BATTERY for information on Li-Ion battery recycling and disposal bans/restrictions in your area. Vtech's involvement in this program is part of its commitment to protecting our environment and conserving natural resources.

The RBRC Seal and 1 (800) 8 BATTERY are registered trademarks of Call2recycle, Inc.

FCC AND IC REGULATIONS

FCC Part 15
NOTE: This equipment has been tested and found to comply with the requirements for a Class B digital device under Part 15 of the Federal Communications Commission (FCC) rules. This equipment has been tested and found to comply with the FCC requirements for a Class B digital device under Part 15 of the FCC rules. This equipment has been tested and found to comply with the FCC requirements for a Class B digital device under Part 15 of the FCC rules. This equipment has been tested and found to comply with the FCC requirements for a Class B digital device under Part 15 of the FCC rules. This equipment has been tested and found to comply with the FCC requirements for a Class B digital device under Part 15 of the FCC rules.

To ensure safety of users, the FCC has established criteria for the amount of radio frequency energy that can be safely absorbed by a user or bystander according to the intended usage of the product. This product has been tested and found to comply with the FCC criteria. The baby unit shall be installed and used such that parts of all persons' body are maintained at a distance of approximately 8 in (20 cm) or more. The transmitter and antenna of the parent unit shall be held at least 1 in (2.5 cm) from your face.

California Energy Commission Charging Testing Mode
This video monitor meets the California Energy Commission (CEC) regulations for energy consumption. Your video monitor is set up to comply with the energy-conserving standards right out of the box. Follow the instructions to install and charge the battery. The CEC battery charging testing mode is activated while charging. Even if the parent unit is paired to camera units, the CEC battery charging testing mode is activated while it is powered off and charging.

FOR CETL COMPLIANCE ONLY

- Observe toutes les instructions et mises en garde inscrites sur l'appareil.
- L'installation par un adulte est requise.
- MISE EN GARDE:** N'utilisez pas l'unité du bébé à une hauteur supérieure à 2 mètres.
- Ce produit a été conçu pour être un dispositif d'appoint seulement. Il n'est pas le remplacement d'une surveillance responsable adéquate par un adulte et ne devrait pas être utilisé comme telle.
- Ce produit n'est pas conçu pour être utilisé en tant que moniteur médical.
- N'utilisez pas cet appareil près de l'eau ni de toute autre source d'humidité, par exemple, près d'une baignoire, cuve à lessive, four de cuisson, dans un sous-sol humide ni près d'une piscine, piscine, étang, fontaine, baignoire quand il est en cours d'utilisation.
- MISE EN GARDE:** N'utilisez que la pile fournie. Il peut y avoir un risque d'explosion si un mauvais type de pile est utilisé pour le dispositif associé. La pile ne peut pas être soumise à des températures extrêmes élevées ou basses et il ne doit pas être exposé à la chaleur ou au feu. Ne jetez pas la pile dans un feu, dans un four chaud, ou d'écran ou de couper mécaniquement la pile peut entraîner une explosion. Le fait de jeter la pile dans un feu ou dans un four chaud, ou d'écran ou de couper mécaniquement la pile peut entraîner une explosion. Une fuite de liquide ou une fuite de gaz inflammable. Une pile soumise à une pression d'air extrêmement basse peut provoquer une explosion.
- Ne jetez pas cet appareil à la poubelle. Essayez d'installer votre caméra IP le plus loin possible de ces dispositifs électroniques: routeurs sans fil, radios, téléphones mobiles, interphones, moniteurs de vidéos, téléviseurs, ordinateurs personnels, appareils électroniques de cuisine et téléphones sans fil.
- Stimulateurs cardiaques implantés dans l'organisme**
Les stimulateurs cardiaques ne s'appliquent qu'aux dispositifs médicaux sans fil. L'organisme "Wireless Technology Research, LLC (WTR), ne garantit pas la compatibilité de cet appareil avec les stimulateurs cardiaques implantés dans l'organisme. Appuyez sur l'Administration des aliments et drogues (FDA) des États-Unis. La firme WTR recommande aux médecins: **Aviz aux détenteurs de stimulateurs cardiaques** - Vous devriez maintenir les dispositifs sans fil à au moins six pouces du stimulateur cardiaque. Ne placez pas votre téléphone sans fil directement sur le stimulateur cardiaque, tel que dans une poche de chemise, lorsque celui-ci est en marche. L'étude effectuée par l'organisme WTR n'a pas identifié de risque pour les personnes atteintes de maladies cardiaques qui utilisent des dispositifs sans fil à proximité de leur corps.

- Mises en garde**
- Utilisez et entreposez le produit à une température entre 0° C (32° F) et 40° C (104° F).
 - Risque d'incendie et risque d'explosion associé à une mauvaise manipulation de la batterie.
 - N'exposez pas cet appareil à des foudres ou à des chocs électriques extrêmes, mais qu'à la lumière directe du soleil. Ne l'installez pas près d'une source de chauffage.
- CONSERVEZ CES INSTRUCTIONS**
- Avertissement - Risque de strangulation** - Les petites pièces de ce moniteur peuvent être avalées par les bébés ou les petits enfants. Veuillez tenir ces pièces hors de portée des enfants.
 - Ce produit n'est pas conçu pour être utilisé par des personnes (incluant des enfants) aux capacités physiques, sensorielles ou mentales réduites ou qui manquent d'expérience et de connaissances, à moins qu'un leur ait donné suffisamment de supervision ou d'instructions relativement à l'utilisation de l'appareil par une personne responsable de leur sécurité.
- What is not covered by this limited warranty?**
This limited warranty does not cover:
- Product that has been subjected to misuse, accident, shipping or other physical damage, improper installation, abnormal operation or handling, neglect, inundation, fire, water or other liquid intrusion; or
 - Product that has been damaged due to repair, alteration or modification by anyone other than an authorized service representative of Vtech; or
 - Product to the extent that the problem experienced is caused by signal conditions, network reliability, or cable or antenna systems; or
 - Product to the extent that the problem is caused by use with non-Vtech accessories; or
 - Product whose warranty/quality stickers, product serial number plates or electronic serial numbers have been removed, altered or rendered illegible; or
 - Product purchased, used, serviced, or shipped for repair from outside the United States of America or Canada, or used for commercial or institutional purposes (including but not limited to Products used for rental purposes); or
 - Product returned without a valid proof of purchase (see Item 2 below); or
 - Charges for installation or set up, adjustments of customer controls, and installation or repair of systems outside the unit.

LIMITED WARRANTY

What does this limited warranty cover?
The manufacturer of this Vtech Product warrants to the holder of a valid proof of purchase ("Consumer" or "you") that the Product and all accessories provided in the sales package ("Product") are free from defects in material and workmanship, pursuant to the following terms and conditions, when installed and used normally and in accordance with the Product operating instructions. This limited warranty extends only to the Consumer for Products purchased and used in the United States of America and Canada.

What will Vtech do if the Product is not free from defects in material and workmanship during the limited warranty period ("Materially Defective Product")?
During the limited warranty period, Vtech's authorized service representative will replace at Vtech's option, without charge, a Materially Defective Product. If we choose to replace the Product, we may replace it with a new or refurbished Product of the same or similar design. We will return the replacement Products to you in working condition. You should expect the replacement to take approximately 30 days.

How long is the limited warranty period?
The limited warranty period for the Product extends for ONE (1) Year from the date of purchase (90 days on products purchased as Refurbished). This limited warranty also applies to the replacement Product for a period of either (a) 90 days from the date the replacement Product is shipped to you or (b) the time remaining on the original one-year warranty (whichever is longer).

Other limitations
This warranty is the complete and exclusive agreement between you and Vtech. It supersedes all other written or oral communications related to this Product. Vtech provides no other warranties for this Product. The warranty excludes defective parts, modules, or equipment. Replacement of the Product, at Vtech's option, is your exclusive remedy. Vtech will return the replacement Products to you in working condition. This warranty gives you specific legal rights, and you may also have other rights, which vary from state to state or province to province.

Please retain your original sales receipt as proof of purchase.
Limitations: Implied warranties, including those of fitness for a particular purpose and merchantability (an unwritten warranty that the Product is fit for ordinary use) are limited to one year from the date of purchase. Some states/provinces do not allow limitations on how long an implied warranty lasts, so the above limitation may not apply to you. In no event shall Vtech be liable for any indirect, special, incidental, consequential, or similar damages (including, but not limited to lost profits or revenue, inability to use the Product or other associated equipment, the cost of substitute equipment, and claims by third parties) resulting from the use of this Product. Some states/provinces do not allow the exclusion or limitation of incidental or consequential damages, so the above limitation or exclusion may not apply to you.