

Go to www.vtechphones.com to register your product for enhanced warranty support and the latest VTech product news.

DS6621
DS6621-2
DS6621-3
DS6621-4
DS662V-1F
DS662V-1G
DS662V-1H
DS662V-1J

DECT 6.0 cordless telephone with
BLUETOOTH® wireless technology



vtech

Abridged user's manual

Congratulations

on purchasing your new VTech product. Before using this product, please read **Important safety instructions**.

This abridged user's manual provides you with basic installation and use instructions. A limited set of features are described in abbreviated form.

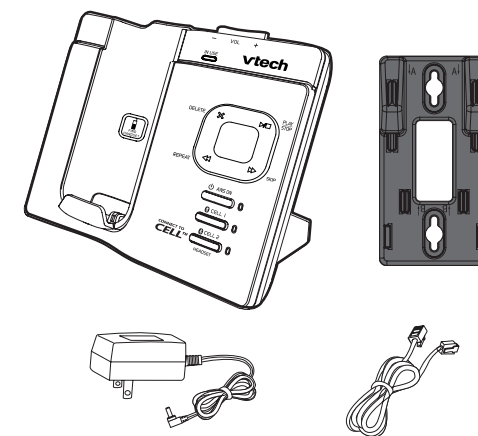
Please refer to the online User's manual for a full set of installation and operation instructions at www.vtechphones.com.



Telephones identified with this logo have reduced noise and interference when used with most T-coil equipped hearing aids and cochlear implants. The TIA-1083 Compliant Logo is a trademark of the Telecommunications Industry Association. Used under license.

What's in the box

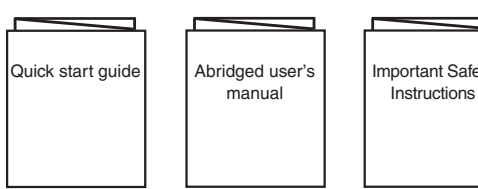
Your product package contains the following items. Save your sales receipt and original packaging in the event warranty service is necessary.



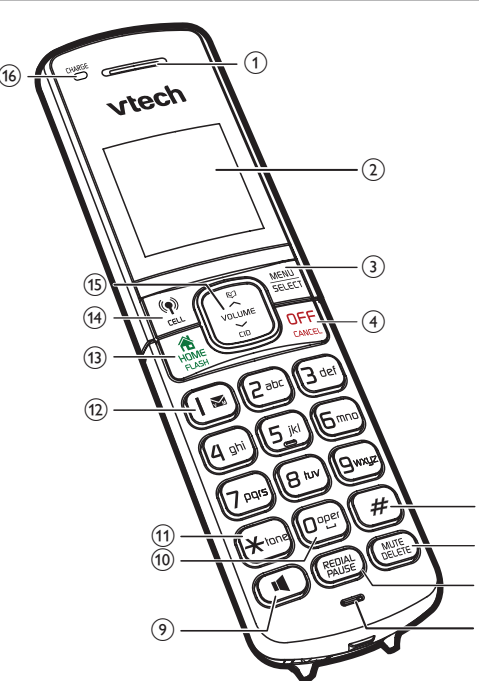
- 1 set for DS6621/
DS662V-1F/
DS662V-1G/
DS662V-1H/
DS662V-1J;
- 2 sets for DS6621-2;
- 3 sets for DS6621-3



- 1 set for DS6621-2;
- 2 sets for DS6621-3



Handset overview



1 – Handset earpiece

2 – LCD display

3 – MENU/SELECT

- Show the menu.
- While in a menu, press to select an item, or save an entry or setting.

4 – OFF/CANCEL

- Hang up a call.
- Silence the ringer temporarily while the handset is ringing.
- Press and hold to erase the missed call indicator while the phone is not in use.
- Press to return to the previous menu; or press and hold to return to idle mode, without making changes.

5 –

- Press repeatedly to show other dialing options when reviewing a caller ID log entry.

6 – MUTE/DELETE

- Mute the microphone during a call.
- Delete digits or characters while using the dialing keys.
- Silence the ringer temporarily while the handset is ringing.

7 – REDIAL/PAUSE

- Press repeatedly to review the redial list.
- Press and hold to insert a dialing pause while entering a number.

8 – Microphone

- Make or answer a call using the handset speakerphone.
- During a call, press to switch between the speakerphone and the handset.

9 –

- Press to add a space when entering names.

10 –

- While you have set the dial mode to pulse and on a call, press to switch to tone dialing temporarily.

11 –

- Press repeatedly to add or remove 1 in front of the caller ID log entry before dialing or saving it to the phonebook.

- Press and hold to set or dial your voicemail number.

13 –

- Make or answer a home call.
- Answer an incoming home call when you hear a call waiting alert.

14 –

- Make or answer a cell call.
- Answer an incoming cell call when you hear a call waiting alert.

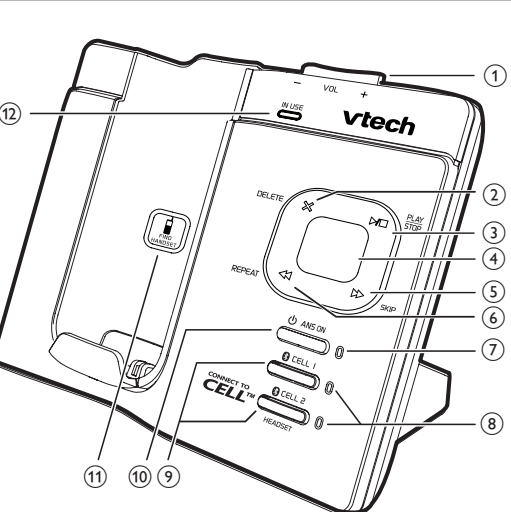
15 – VOLUME/

- Review the phonebook when the phone is not in use.
- Increase the listening volume during a call.
- Scroll up while in a menu, or in the phonebook, caller ID log, or redial list.
- Move the cursor to the right when entering numbers or names.
- Review the caller ID log when the phone is not in use.
- Decrease the listening volume during a call.
- Scroll down while in a menu, or in the phonebook, caller ID log, or redial list.
- Move the cursor to the left when entering numbers or names.

16 – CHARGE light

- On when the handset is charging.

Telephone base overview



1 – /VOL/+

- Press to adjust the volume during message playback.
- Press to adjust the telephone base ringer volume when the phone is not in use.

2 – X/DELETE

- Press to delete the playing message.
- When the phone is not in use, press twice to delete all previously reviewed messages.

3 – /PLAY/STOP

- Press to play messages.
- Press to stop message playback.

4 – Message window

- Shows the number of messages, and other information of the answering system or telephone base.

5 – /SKIP

- Press to skip to the next message.

6 – /REPEAT

- Press to repeat a message.
- Press twice to play the previous message.

7 – /ANS ON light

- On when the answering system is on.

8 – CELL 1 and CELL 2/HEADSET lights

- On when the telephone base is paired and connected with a Bluetooth device
- Flashes when the telephone base is in discoverable mode.

9 – CELL 1 and CELL 2/HEADSET

- Press to connect the paired cell Bluetooth device.
- Press and hold to add or replace a Bluetooth device.

10 – /ANS ON

- Press to turn the answering system on or off.

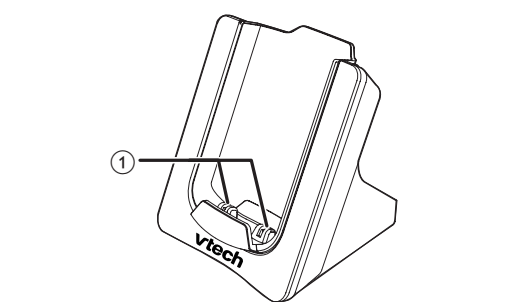
11 – /FIND HANDSET

- Press to page all system handsets.

12 – IN USE light

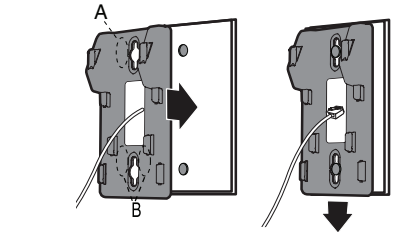
- On when the handset is in use, or the answering system is answering a call.
- Flashes when there is an incoming call, or another telephone sharing the same line is in use.

Charger overview

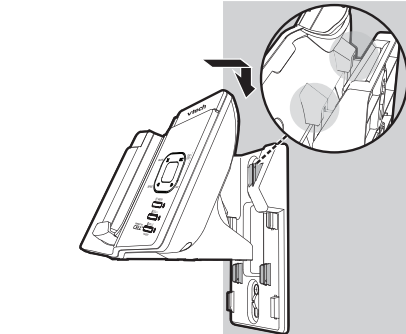


1 – Charging pole

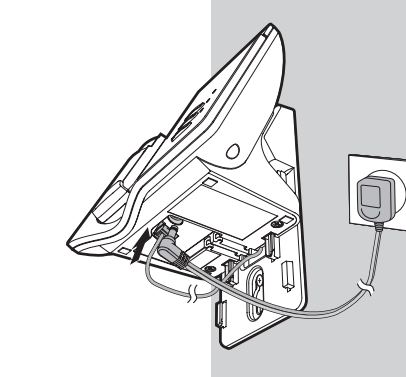
- Align the holes on the bracket with the standard wall plate and slide the bracket down until it clicks securely in place.



- Align the grooves on the telephone base with the tabs on the wall mount bracket, and then slide it down until it clicks securely in place.



- Connect the power adapter to the telephone base and an electrical outlet not controlled by a wall switch.



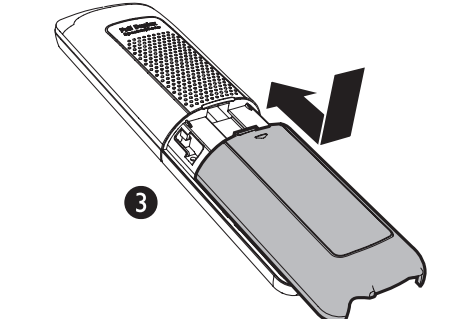
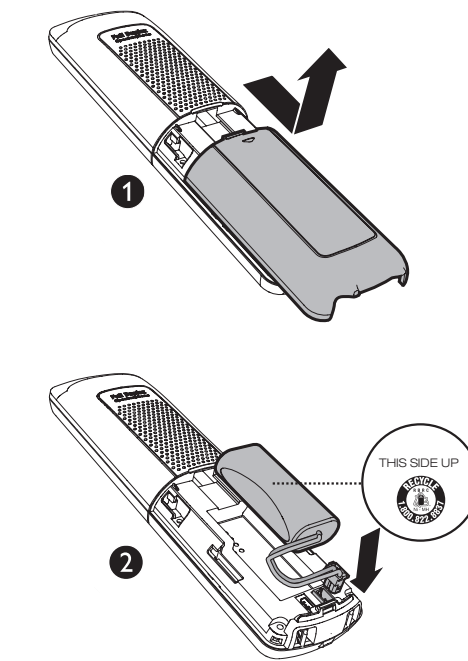
Install and charge the battery

Install the battery

Install the battery as shown below.

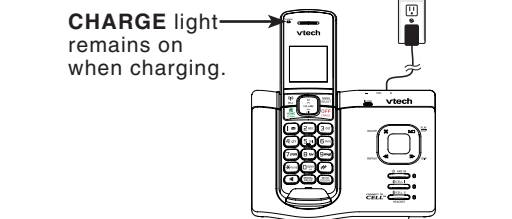
NOTES

- Use only supplied battery.
- If the handset will not be used for a long time, disconnect and remove the battery to prevent possible leakage.



Charge the battery

Place the handset in the telephone base or the charger to charge.



Once you have installed the battery, the handset LCD display indicates the battery status (see the table below).

NOTES

- For best performance, keep the handset in the telephone base or charger when not in use.
- The battery is fully charged after 12 hours of continuous charging.

Battery indicators	Battery status	Action
The screen is blank, or shows Put in charger and flashes.	The battery has no charge or very little charge. The handset cannot be used.	Charge without interruption (at least 30 minutes).
The screen shows Low battery and flashes.	The battery has enough charge to be used for a short time.	Charge without interruption (at least 30 minutes).
The screen shows HANDSET X.	The battery is charged.	To keep the battery charged, place it in the telephone base or charger when not in use.

Before use

After you install your telephone or power returns following a power outage, the handset will prompt you to set the date and time, and the answering system through voice guide.

Set date and time

NOTES

- Make sure you set the date and time including the year correctly; otherwise the answering system does not announce the correct day of the week for your recorded messages time stamp.

- Use the dialing keys (0-9) to enter the month (MM), date (DD) and year (YY). Then press **SELECT**.

- Use the dialing keys (0-9) to enter the hour (HH) and minute (MM). Then press **or** to choose **AM** or **PM**.
- Press **SELECT** to save.

After the setting for the date and time, the handset will display **Voice guide to...** and **set up Ans sys?** alternatively.

Set answering system through voice guide

This feature assists you to do the basic setup of the answering system. You can follow the voice guide to record your own announcement, set the number of rings and the message alert tone.

- Press **SELECT** to start the voice guide for the answering system setup. You hear the voice prompt "Hello! This voice guide will assist you with the basic setup of your answering system."
- Setup your answering system by inputting the designated numbers as instructed in the voice guide.

Check for dial tone:

Press **/HOME**. If you hear a dial tone, the installation is successful.

If you do not hear a dial tone:

- Make sure the installation procedures described above are properly done.
- It may be a wiring problem. If you have changed your telephone service to digital service from a cable company or a VoIP service provider, the telephone line may need to be rewired to allow all existing telephone jacks to work. Contact your cable/VoIP service provider for more information.

Operating range

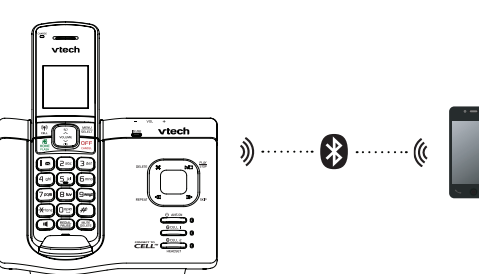
This cordless telephone operates with the maximum power allowed by the Federal Communications Commission (FCC). Even so, this handset and telephone base can communicate over only a certain distance - which can vary with the locations of the telephone base and handset, the weather, and the layout of your home or office.

When the handset is out of range, the handset displays **Out of range** or **no pwr at base** alternately.

If there is a call while the handset is out of range, it may not ring, or if it does ring, the call may not connect well when you press **/HOME** or **/CELL**. Move closer to the telephone base, and then press **/HOME** or **/CELL** to answer the call. If the handset moves out of range during a telephone conversation, there may be interference. To improve reception, move closer to the telephone base.

Bluetooth

To use a Bluetooth enabled cell phone or headset with your **DS6621/DS662V**, you must first pair and connect your Bluetooth cell phone or headset with the telephone base.



Bluetooth wireless technology operates within a short range (a maximum of approximately 30 feet). When you pair a Bluetooth cell phone to the telephone base, place your Bluetooth cell phone closer to the telephone base to maintain sufficient signal strength.

NOTE

For optimal performance, keep your cell phone within 15 feet of the telephone base while using the cell line.

Pair and connect your Bluetooth enabled cell phone

- Choose a slot to pair the cell phone. Press and hold **CELL 1** or **CELL 2/HEADSET** on the telephone base until you hear a confirmation tone, and the **CELL 1** or **CELL 2/HEADSET** light flashes.
- Turn on the Bluetooth feature of your cell phone. Once your cell phone finds your VTech phone (VTech DS6621/DS662V), press appropriate key on your cell phone to continue the pairing process.

- Your cell phone may prompt you to enter the PIN of the telephone base. The default PIN of the telephone base is **0000**.

When the cell phone is connected to the telephone base, the corresponding status icon **or** displays. The corresponding device light **CELL 1** or **CELL 2/HEADSET** turns on.

If the pairing fails, turn off the Bluetooth feature on your cell phone and on the **DS6621/DS662V** by pressing **CELL 1** or **CELL 2/HEADSET**. Then repeat the steps above to pair and connect again. In some cases, it may take you a few attempts to complete the pairing process.

Pair and connect your Bluetooth enabled headset

- Press **MENU** on the phone when it is not in use.
- Press **or** to scroll to **Bluetooth**, and then press **SELECT**.
- Press **or** to scroll to **Add BT headset**, and then press **SELECT**. The screen displays **Search headset...**
- Set your headset to discoverable mode. Once your headset finds your headset, press **SELECT**.
 - Enter the PIN of your headset if required. The PIN for most Bluetooth devices is **0000** (refer to the user's manual of your headset), and then press **SELECT**.

When the headset is successfully paired and connected to the telephone base, the **icon displays. The CELL 2/HEADSET light turns on.**

VTech Connect to Cell™ application

This application helps you integrate your Android phones with your **DS6621/DS662V**.

For more information and application download, scan the QR code on the right, or go to http://www.vtechphones.com/app_connect_to_cell.

Download contacts from your Bluetooth cell phone

- Press **MENU** when the phone is not in use.
- Scroll to **Bluetooth**, and then press **SELECT**.
- Scroll to **Download PB**, and then press **SELECT**.
- Scroll to select the desired cell phone, and then press **SELECT**.

NOTES

- For certain cell phones, you may need to press a key on your cell phone to confirm the phonebook download.
- The performance of phonebook download feature depends on the compatibility of your Bluetooth cell phone. Refer to the user's manual of your cell phone for more information about how that device uses Bluetooth connectivity.
- Certain cell phones do not support SIM card download. If this is the case, transfer the contacts from your SIM card to your cell phone memory first. Then download from your cell phone memory. For more information on how to transfer contacts from your SIM card to your cell phone memory, see the user's manual of your cell phone.
- For Android cell phones, you may also download your cell phone contacts to your **DS6621/DS662V** via the VTech Contact Share application. Scan the QR code on the right, or go to www.vtechphones.com/apps/contact_share for application download.

Using the handset menu

- Press **MENU** when the phone is not in use.
- Press **or** until the screen displays the desired feature menu.
- Press **SELECT** to enter that menu.
- To return to the previous menu, press **CANCEL**.
- To return to idle mode, press and hold **CANCEL**.

Configure your telephone

Set language

The LCD language is preset to English. You can select English, French or Spanish to be used in all screen displays.

- Press **MENU** when the handset is not in use.
- Scroll to **Settings**, and then press **SELECT** twice.
- Scroll to choose **English, Français** or **Español**.
- Press **SELECT** to save.

Set date and time

NOTE

- Make sure you set the date and time including the year correctly; otherwise the answering system does not announce the correct day of the week for your recorded messages time stamp.

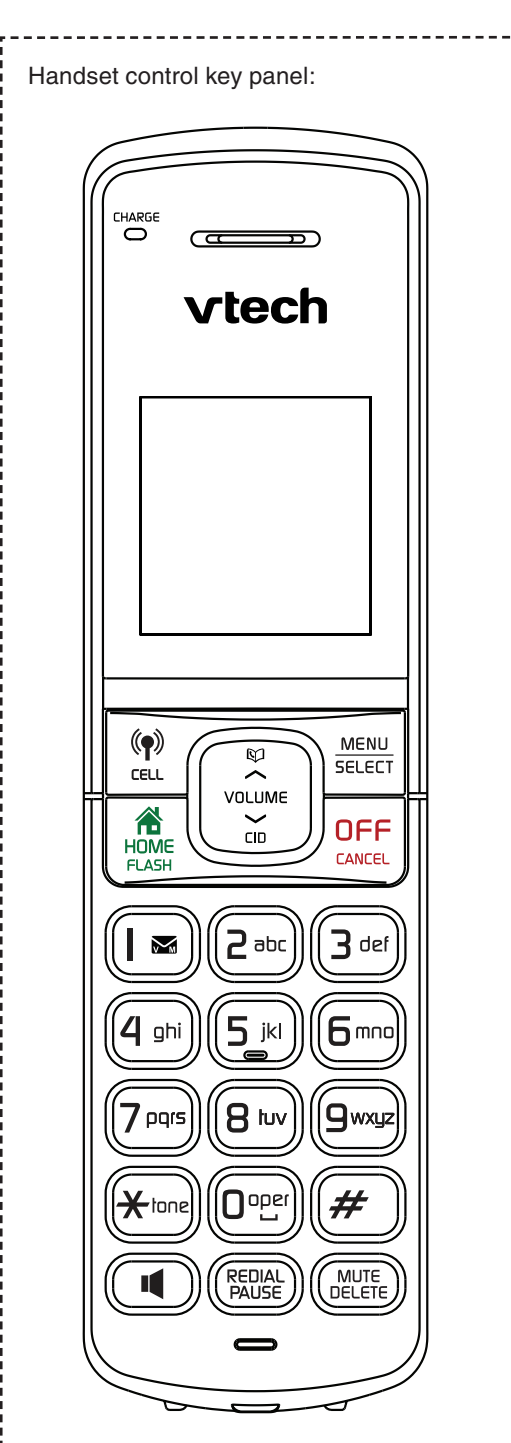
- Press **MENU** when the handset is not in use.
- Scroll to **Set date/time**, and then press **SELECT**.
- Use the dialing keys (0-9) to enter the month (MM), date (DD) and year (YY). Then press **SELECT**.
- Use the dialing keys (0-9) to enter the hour (HH) and minute (MM). Then press **or** to choose **AM** or **PM**.
- Press **SELECT** to save.

Temporary tone dialing

If you have pulse (rotary) service only, you can switch from pulse to tone dialing temporarily during a call.

- During a call, press ***tone**.
- Use the dialing keys to enter the relevant number. The telephone sends touch-tone signals. It automatically returns to pulse dialing mode after you end the call.

Telephone operation



Make a home call

- Press **/HOME** or , and then dial the telephone number.
- OR-
- Enter the telephone number on the handset or base, and then press **/HOME** or to dial.

Make a cell call

- Press **/CELL** on the handset or base. Enter the telephone number, and then press **/CELL** to dial.
- OR-
- Enter the telephone number on the handset or base, and then press **/CELL** to dial.

NOTES

- After first pressing **/CELL**, you may need to choose a cell device. Scroll to select the desired cell device when necessary, and then press **SELECT**.
- While using the cell line, place your cell phone closer to the base, and make sure that there are no physical obstacles between the base and the cell phone, such as large furniture or thick walls.

Answer a home/cell call

- Press **/HOME**, **/CELL**, , or any dialing key.

End a home/cell call

- Press **OFF** on the handset, or put the handset to the base or charger.

Speakerphone

- During a call, press on the handset to switch between speakerphone and normal handset use.

NOTE

The handset earpiece volume setting and speakerphone volume setting are independent.

Mute

The mute function allows you to hear the other party but the other party cannot hear you.

- During a call, press **MUTE** on the handset or telephone base. The screen displays **Muted**.
- Press **MUTE** again to resume the conversation. The screen displays **Microphone ON**.

Call waiting

When you subscribe to call waiting service from your telephone service provider, you hear an

Display icons overview

	The battery icon flashes when the battery is low and needs charging.
	The battery icon animates when the battery is charging.
	The ECO mode activates automatically to reduce power consumption when the handset is within range from the telephone base.
	There are new voicemail received from your telephone service provider.
	On when the home line is in use or there is an incoming home call. Flashes when there is an incoming home waiting call.
	There are Bluetooth devices connected on the cell devices list.
	On when the cell line is in use or there is an incoming cell call. Flashes when there is an incoming cell waiting call.
	There are new caller ID log entries.
	The answering system is turned on.
	The handset ringer is off.
	The message number currently playing and total number of new/old messages recorded.

Connect

You can choose to connect the telephone base for desktop usage or wall mounting.

NOTES

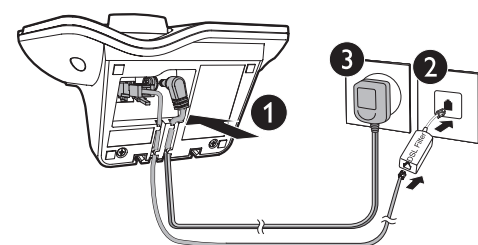
- Use only the adapters provided.
- Even if you do not subscribe to any conventional telephone service, you can pair a Bluetooth enabled cell phone to your telephone base (see **Bluetooth**), and use the cell line alone without plugging in a telephone line cord.

TIP

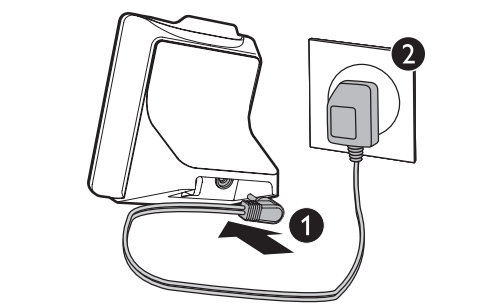
- If you subscribe to digital subscriber line (DSL) high-speed Internet service through your telephone line, make sure you install a **DSL filter** (not included) between the telephone line cord and telephone wall jack. Contact your DSL service provider for more information.



Connect the telephone base



Connect the charger



Mount the telephone base

- Route the telephone line cord through the rectangular hole on the wall mount bracket. Then plug the two ends of the telephone line cord into the telephone base and the wall outlet as shown.

