



# User's manual DM521/DM521-2

## Safe & Sound® Digital Audio Monitor



### Congratulations

on purchasing your new VTech product. Before using this product, please read **Important safety instructions**.

For support, shopping, and everything new at VTech, visit our website at [www.vtechphones.com](http://www.vtechphones.com).

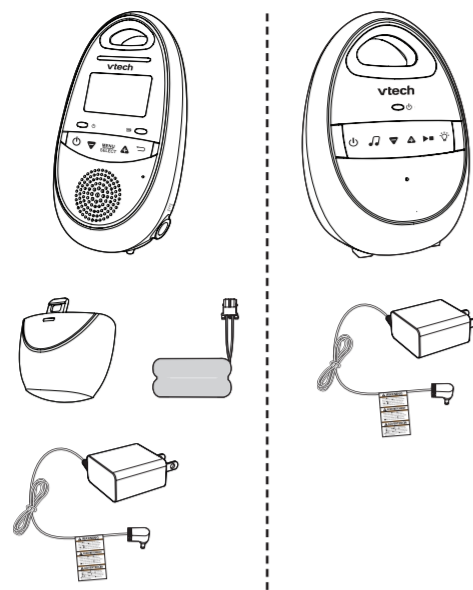
**Register online to get an additional 3-month warranty!**

Visit [www.vtechphones.com](http://www.vtechphones.com).

**Registration**  
Register your product online for enhanced warranty support.

**Product news**  
Learn about the latest VTech products.

### What's in the box



1 set for DM521;  
2 sets for DM521-2

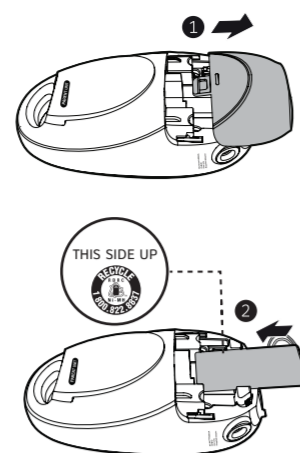
### Install the battery

The parent unit runs on rechargeable battery or AC power. To continuously monitor your baby, make sure you use both battery and AC power at the same time. With the battery alone, the parent unit can cordlessly run for a short time only.

#### NOTES

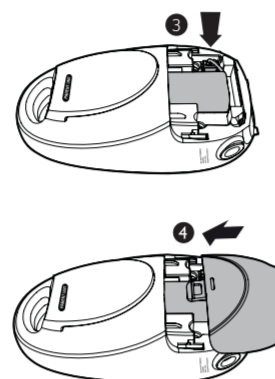
- Use only the battery supplied with this product.
- If the parent unit will not be used for a long time, disconnect and remove the battery to prevent possible leakage.
- The operating time for using the rechargeable battery is short. If you want to monitor your baby for a long time, we recommend you connect the parent unit to AC power.

Install the battery as shown below.



#### NOTE

- Make sure the **THIS SIDE UP** is facing up while inserting the battery.



### Replace the battery

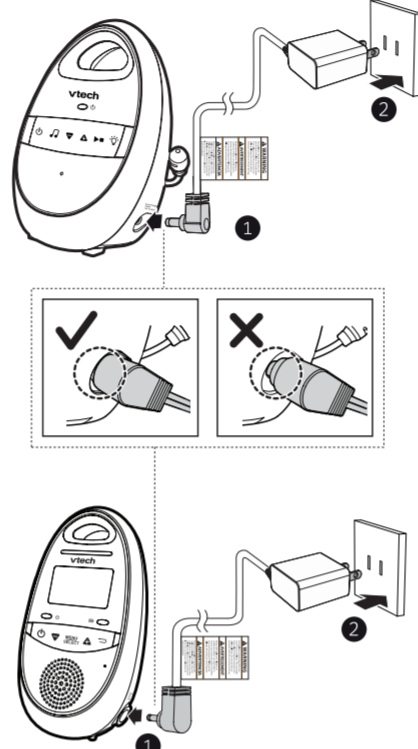
To replace the battery, unplug the battery connector from the socket, and then pull the battery out of the battery compartment. Follow the steps above to install the battery.

### Connect and charge the battery

#### NOTES

- Use only the power adapters supplied with this product.
- Make sure the electrical outlets are not controlled by wall switches.
- The power adapters are intended to be correctly oriented in a vertical or floor mount position. The prongs are not designed to hold the plug in place if it is plugged into a ceiling, under-the-table or cabinet outlet.
- Make sure the parent unit, the baby unit and the power adapter cords are out of reach of children.

### Connect the baby monitor



### Charge the parent unit battery

Once you have connected the parent unit or installed its battery, it powers on automatically. The battery icon indicates the battery status (see the following table).

#### NOTES

- The parent unit battery is fully charged after 11 hours of continuous charging.
- It takes longer to charge the battery when the parent unit is turned on. To shorten the charging time, turn the parent unit off while charging.
- The standby time varies depending on the sensitivity level you set, your actual use, and the age of the battery.

Battery indicators	Battery status	Action
The battery icon is off.	No battery is installed. The parent unit can be used only when it is connected to AC power.	Install the parent unit battery. Charge without interruption (at least 30 minutes).
LOW BATTERY and  flash on the screen. The  light flashes.	The battery has very little charge and may be used for only a short time.	Charge without interruption (about 30 minutes).
The battery icon becomes solid	The battery is fully charged.	To keep the battery charged, connect it to AC power when not in use.

### Before use

#### NOTE

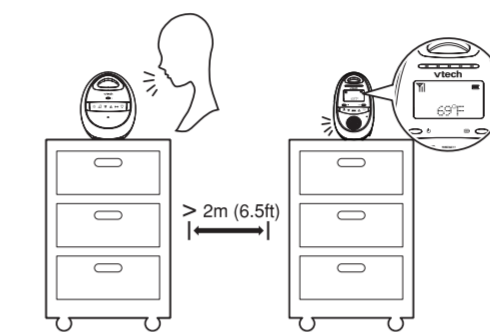
- This baby monitor is intended as an aid. It is not a substitute for proper adult supervision, and should not be used as such.

### Test your audio monitor

You may test the baby monitor before initial use, and at regular times thereafter.

#### CAUTION

- For hearing protection, make sure the parent unit is more than 2 meters (6.5 feet) away from the baby unit. If you hear any high-pitched noise, move the parent unit further until the noise stops. You can also press on the parent unit to lower or mute the noise.



- Make sure your baby unit and parent unit are on.
- Speak towards the microphone of the baby unit. You will hear the sound at the parent unit, and see the visual sound indicators light up.

#### NOTE

- When the parent unit displays **NOT LINKED** and flashes, move the parent unit closer to the baby unit (observe the minimum distance of 2 meters / 6.5 feet). You can also check if the baby monitor is connected to a live power socket and switched on.

#### TIP

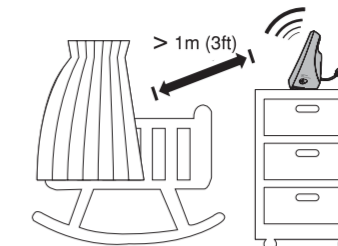
- Increase the speaker volume of the parent unit if you cannot hear the sounds transmitted from the baby unit.

### Positioning the baby monitor

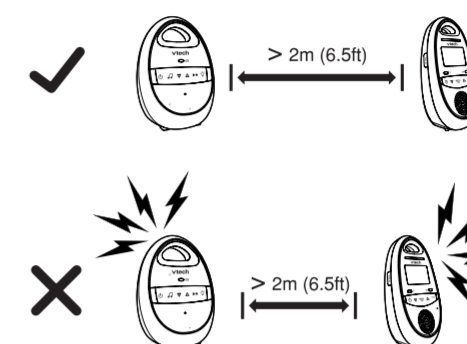
#### CAUTIONS

- Keep the baby unit out of the reach of the baby. Never place or mount the baby unit inside the baby's crib or playpen.

- Place the baby unit more than 1 meter (3 feet) away from your baby.



- Place the parent unit more than 2 meters (6.5 feet) away from the baby unit.



#### CAUTION

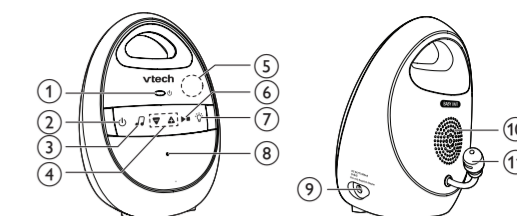
- The default volume of your parent unit is **VOLUME 3**. If you experience high-pitched screeching noise from your baby monitor while positioning:
  - Make sure your baby unit and parent unit are more than 2 meters (6.5 feet) apart, OR
  - Turn down the volume of your parent unit.

### Operating range

The operating range of the baby monitor is up to 300 meters (1,000 feet) outdoors or 50 meters (160 feet) indoors. The actual operating range may vary depending on the environmental conditions, and other interferences such as walls, doors, and other obstructions.

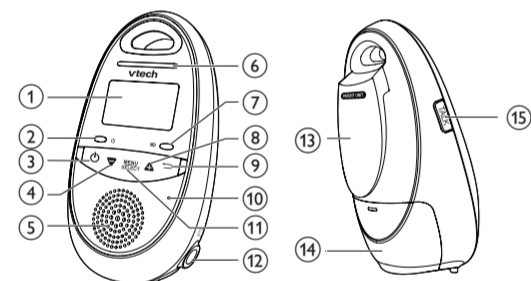
### Overview

#### Baby unit overview



1	<b>Power indicator</b> <ul style="list-style-type: none"> <li>Light on when the baby unit is powered on.</li> <li>Light off when the baby unit is powered off.</li> </ul>
2	<b>Power on/off</b> <ul style="list-style-type: none"> <li>Press and hold to power on or off.</li> </ul>
3	<b>Lullaby</b> <ul style="list-style-type: none"> <li>Press to start playing the lullaby.</li> <li>Press again to skip to the next lullaby.</li> </ul>
4	<b>Volume down/up</b> <ul style="list-style-type: none"> <li>Press to adjust the speaker volume. It determines the lullaby volume, and the talkback volume transmitted from your parent unit.</li> </ul>
5	<b>Night light</b> <ul style="list-style-type: none"> <li>Light on when night light is turned on.</li> <li>Light off when night light is turned off.</li> </ul>
6	<b>Play/Stop</b> <ul style="list-style-type: none"> <li>Press to start playing the lullaby.</li> <li>Press again to stop playing the lullaby.</li> </ul>
7	<b>Night light on/off</b> <ul style="list-style-type: none"> <li>Press to turn the night light on or off.</li> </ul>
8	<b>Microphone</b>
9	<b>Power jack</b>
10	<b>Speaker</b>
11	<b>Temperature sensor</b>

### Parent unit overview



1	<b>LCD display</b>
2	<b>Power indicator</b> <ul style="list-style-type: none"> <li>Light on when the parent unit is powered on.</li> <li>Light flashes when there is no link between baby unit and parent unit or parent unit is out of range from the baby unit.</li> <li>Light off when the parent unit is powered off.</li> </ul>
3	<b>Power on/off</b> <ul style="list-style-type: none"> <li>Press and hold to power on or off.</li> <li>While in a menu, press to return to idle screen.</li> </ul>
4	<b>Volume down</b> <ul style="list-style-type: none"> <li>Press to decrease the speaker volume.</li> <li>While in a menu, press to scroll down.</li> </ul>
5	<b>Speaker</b>
6	<b>Visual sound indicator</b>  The visual sound indicator has two functions. One is to show the sound level detected by the baby unit. The other one is to show the volume level during speaker volume setting. <b>Sound level detected by the baby unit</b> <ul style="list-style-type: none"> <li> One to three green lights indicate a moderate sound level detected by the baby unit.</li> <li> Additional red lights indicate a higher sound level detected by the baby unit (e.g. baby crying loudly).</li> </ul> <b>Speaker volume level</b> <ul style="list-style-type: none"> <li> One to three green lights indicate <b>Level 1 to Level 3</b> of the speaker volume setting.</li> <li> Additional red lights indicate <b>Level 4 to Level 5</b> of the speaker volume setting.</li> </ul>

7	<b>Battery level indicator</b> <ul style="list-style-type: none"> <li>Light on when the battery is being charged.</li> <li>Light flashes when the battery is low and needs charging.</li> <li>Light off when no battery is installed.</li> </ul>
8	<b>Volume up</b> <ul style="list-style-type: none"> <li>Press to increase the speaker volume.</li> <li>While in a menu, press to scroll up.</li> </ul>
9	<b>Back</b> <ul style="list-style-type: none"> <li>While in a menu, press to return to the previous screen.</li> <li>Press to return to idle screen.</li> </ul>
10	<b>Microphone</b>
11	<b>MENU/SELECT</b> <ul style="list-style-type: none"> <li>Press to enter the menu while idle.</li> <li>While in a menu, press to choose an item, or save a setting.</li> </ul>
12	<b>Power jack</b>
13	<b>Belt clip</b>
14	<b>Battery compartment cover</b>
15	<b>TALK</b> <ul style="list-style-type: none"> <li>Press and hold to talk to the baby unit; release to stop talking.</li> <li>While in a menu, press to return to idle screen.</li> </ul>

### Parent unit display icons

	<b>Connection status</b> <ul style="list-style-type: none"> <li> displays when strong signal strength is detected between the baby unit and the parent unit.</li> <li> displays when good signal strength is detected between the baby unit and the parent unit.</li> <li> displays when moderate signal strength is detected between the baby unit and the parent unit.</li> <li> displays when the weak signal strength is detected between the baby unit and the parent unit is lost.</li> </ul>
	<b>Lullaby</b> <ul style="list-style-type: none"> <li>Displays when the baby unit is playing lullaby.</li> </ul>
	<b>Sound alert</b> <ul style="list-style-type: none"> <li>Displays when the sound alert of the parent unit is turned on.</li> <li>Flashes when there are loud sounds detected from the baby unit and the parent unit is in mute.</li> </ul>

	<b>Mute</b> <ul style="list-style-type: none"> <li>Displays when the volume is turned off.</li> </ul>
	<b>Night light</b> <ul style="list-style-type: none"> <li>Displays when the night light is turned on.</li> </ul>
	<b>Battery status</b> <ul style="list-style-type: none"> <li> animates when the battery is charging.</li> <li> displays solid when the battery is fully charged.</li> <li> flashes when the battery is charged with AC adapter, or charging failure.</li> <li> flashes when the battery is in low level and needs charging.</li> <li> No battery icon displays when there is no battery installed.</li> </ul>

### Parent unit display screen messages

LOW BATTERY	The parent unit uses only the rechargeable battery pack and it needs to be recharged.
NOT LINKED	The link between the parent unit and the baby unit is lost continuously for over 10 seconds.
SAVED	Your selection has been saved.
SEARCHING	The parent unit is out of range of the baby unit, or the baby unit is out of power.
TALK	The parent unit is talking to the baby unit.
TALKBACK	The other parent unit is talking to the baby unit.
HI TEMP	The temperature detected from the selected baby unit is above the set maximum temperature.
LOW TEMP	The temperature detected from the selected baby unit is below the set minimum temperature.
°F/°C	The real-time temperature detected by the baby unit in Celsius (°C) or Fahrenheit (°F) (e.g. 14°C or 57°F).

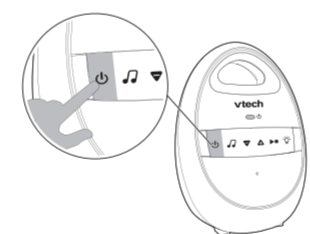
#### NOTE

- The parent unit powers on automatically once it is connected to AC power or battery installed. The baby unit also powers on automatically once connected to AC power.

### Using the baby monitor

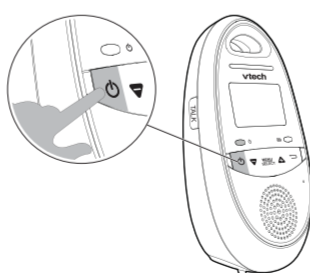
#### Power on or off the baby unit

- Press and hold to power on the baby unit. The power indicator turns on.
- Press and hold again to power off the baby unit. The power indicator turns off.



#### Power on or off the parent unit

- Press and hold to power on the parent unit. The power indicator and the screen turns on.
- Press and hold again to power off the parent unit. The power indicator and the screen turns off.



### Adjust the speaker volume for baby unit

- Press on the baby unit at any time.

### Adjust the speaker volume for parent unit

You can adjust the speaker volume from **VOLUME 1 to VOLUME 5**, or turn it off. The speaker volume is preset to **VOLUME 3**.

- Press when the parent unit is not in use.

When the speaker volume is set to off, the screen displays .

### Language

You can select a language (English, French or Spanish) to be used in all screen displays. The language is preset to **ENGLISH**.

- Press **MENU** when the parent unit is not in use.
- Press to choose **LANGUAGE**, then press **SELECT**.
- Press to choose **ENGLISH, FRANCAIS or ESPANOL**.
- Press **SELECT** to confirm your selection. The screen displays **SAVED** and you hear a confirmation tone.

#### NOTE

- The language setting on each parent unit is independent.

### Adjust the sound sensitivity of the baby unit

You can choose to hear sounds from the baby unit all the time, or to hear sounds that exceed a certain level. You can use the parent unit to adjust the microphone sensitivity of your baby unit. The higher the sensitivity level, the more sensitive the baby unit is in detecting sounds for transmitting to the parent unit. The sound sensitivity is preset to **LEVEL 5**.

#### Sound sensitivity table for reference

Display	Sensitivity	Description
LEVEL 5	High sensitivity	<b>High sensitivity level</b> The parent unit speaker is constantly on, and you will hear all sounds (including background noises) from your baby's room.
LEVEL 4		<b>Medium high sensitivity level</b> The parent unit speaker turns on for soft babbling and louder sounds from your baby. It remains quiet when your baby sleeps soundly.
LEVEL 3		<b>Medium sensitivity level</b> The parent unit speaker turns on for loud babbling and louder sounds from your baby. It remains quiet when your baby makes soft sounds.
LEVEL 2		<b>Medium low sensitivity level</b> The parent unit speaker turns on for crying and louder sounds from your baby. It remains quiet when your baby makes soft sounds.
LEVEL 1	Low sensitivity	<b>Low sensitivity level</b> The parent unit speaker turns on for loud crying or screeching sounds from your baby. It remains quiet when your baby makes soft sounds.

- Press **MENU** when the parent unit is not in use.
- Press **SELECT** to select **SENSITIVITY**.
- Press to choose the sensitivity level.
- Press **SELECT** to confirm your selection. The screen displays **SAVED** and you hear a confirmation tone.

#### NOTE

- To enter the sensitivity menu of the parent unit, the baby unit must be turned on.

### Lullaby

You can select your desired lullaby to play on the baby unit. There are 5 lullabies for you to choose from.

#### Using the parent unit menu

- To play lullaby:**
- Press **MENU** when the parent unit is not in use.
  - Press to choose **LULLABY**, then press **SELECT**.
  - Press to choose your desired lullaby, then press **SELECT**.
  - Press **SELECT** to select **PLAY**. The screen displays **SAVED** and you hear a confirmation tone.

#### To stop lullaby:

- Press **MENU** when the parent unit is not in use.
- Press to choose **LULLABY**, then press **SELECT**.
- Press **SELECT** when the screen displays the lullaby that is being played.
- Press **SELECT** to select **STOP**. The screen displays **SAVED** and you hear a confirmation tone.

#### Using the baby unit control key

- To play lullaby:**  
Press to start playing lullaby.
- To skip to the next lullaby:**  
Press to skip to the next lullaby.
- To stop lullaby:**  
Press to stop playing lullaby.

### Sound alert

Sound alert feature works only when the parent unit is in mute. If you turn on the sound alert, the parent unit beeps when the baby unit detects sounds which light up four sound level indicators on the parent unit.

When the sound alert of the parent unit is turned on, displays. The sound alert is preset to **OFF**.

- Press **MENU** when the parent unit is not in use.
- Press to choose **SOUND ALERT**, then press **SELECT**.
- Press **SELECT** to select **ON?** when the current sound alert setting is **OFF?** or to select **OFF?** when the current sound alert setting is **ON**. The screen displays **SAVED** and you hear a confirmation tone.

#### NOTE

- The sound alert setting on each parent unit is independent.

### Night light

You can turn on or off the night light by pressing the button on the baby unit. You can also use the parent unit to turn on or off the night light on the baby unit.

When the night light is turned on, displays.

- Press **MENU** when the parent unit is not in use.
- Press to choose **NIGHTLIGHT**, then press **SELECT**.
- Press **SELECT** to select **ON?** when the current night light setting is **OFF?** or to select **OFF?** when the current night light setting is **ON**. The screen displays **SAVED** and you hear a confirmation tone.

#### NOTES

- To enter the night light menu of the parent unit, the baby unit must be turned on.

