




How the system works



DM251 Baby monitor
Receive alerts on your parent unit when there is activity in your child's room – from an open door or window to movement in the crib.



Motion sensor (sold separately)
Lets you know when there are visitors, intruders, or pets moving around your home.



Open/Closed sensor
Apply this magnetic Open/Closed sensor to a door, window, or medicine cabinet to know if it is open or closed.

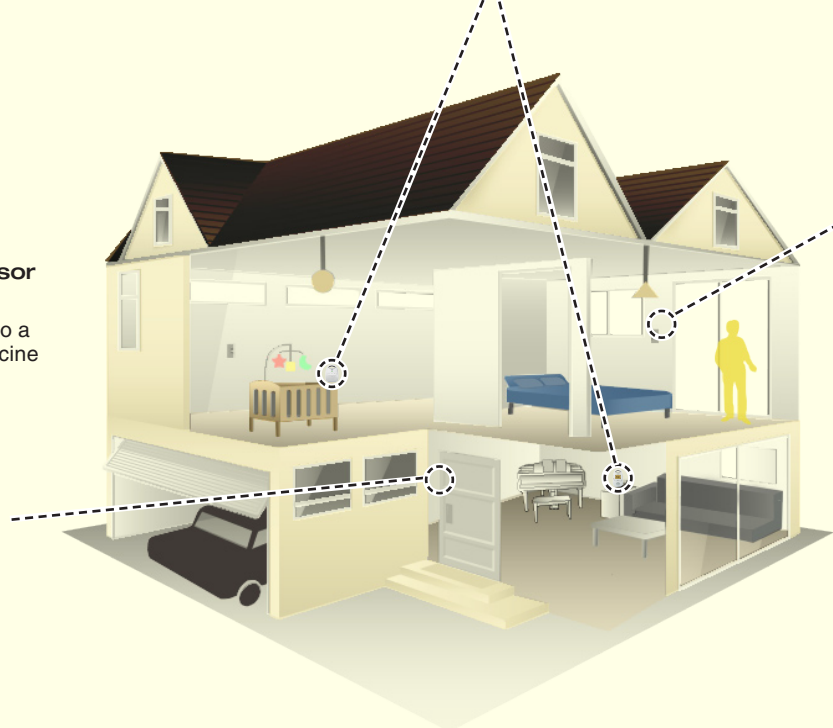
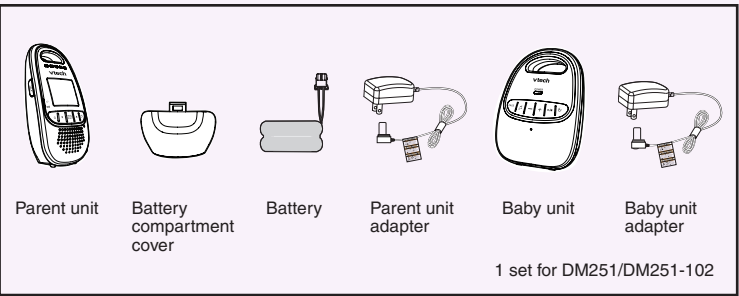


Diagram illustrating the placement of sensors in a house. Dashed lines indicate the location of the DM251 Baby monitor, Motion sensor, and Open/Closed sensor in various rooms (living room, bedroom, bathroom, kitchen, and garage).

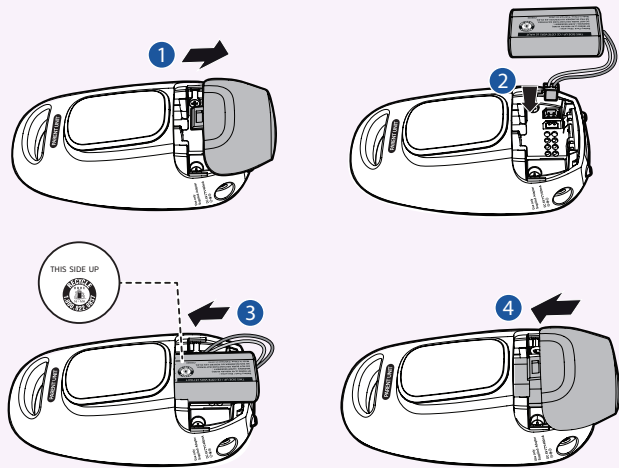
Baby Monitor installation

1 Parts checklist

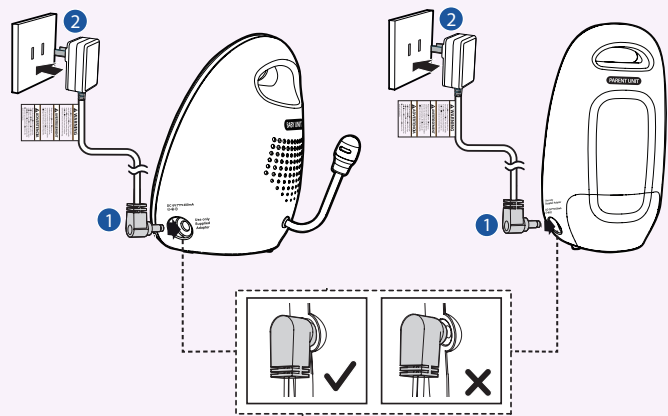


2 Connect

Install the battery



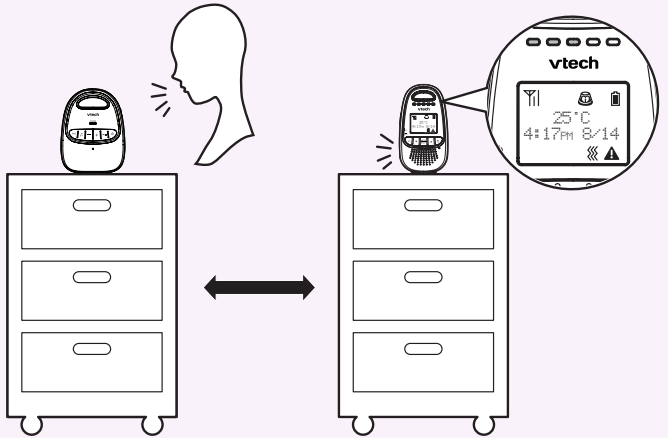
Connect the baby monitor



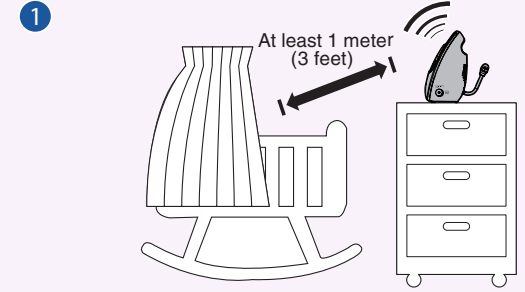
NOTE
Make sure the parent unit and the baby unit are placed at least 1 meter / 3 feet away from each other to prevent audio feedback.

3 Check and Locate

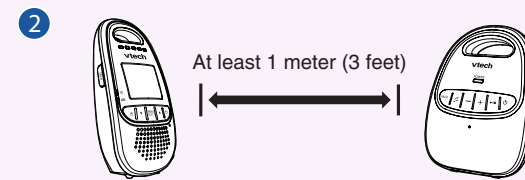
Test your baby monitor



Positioning your baby monitor



CAUTION
Keep the baby unit out of the reach of the baby. Never place or mount the baby unit inside the baby's crib or playpen.



* The combination of sensors depends on the package you purchased.

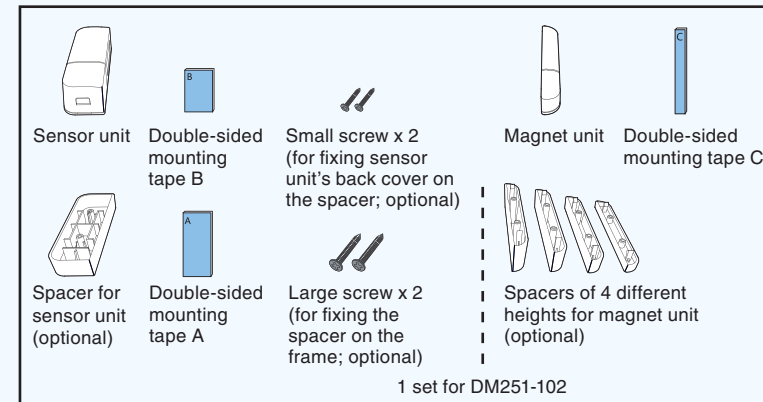


Specifications are subject to change without notice.
© 2016 for VTech Communications, Inc.
All rights reserved. 03/16. DM251-X_IG_V2.0
Document order number: 96-010978-020-100

If your package includes an Open/Closed sensor,
please read the following section.

Open/Closed sensor installation

1 Parts checklist



2 Power on

- NOTES**
- The batteries are pre-installed in your Open/Closed sensor.
 - The Open/Closed sensor is already pre-registered to the baby monitor.
 - The batteries operate properly under the temperature between 0°F (-18°C) and 130°F (55°C).



3 Check and locate

Check your Open/Closed sensor before use



Make sure both baby unit and parent unit are on. Then, separate the sensor unit and magnet unit.

The parent unit will emit an alert tone, and announce "Open/Closed# is open". The screen will display **OPEN/CLOSED# IS OPEN**.

Test the sensor signal strength



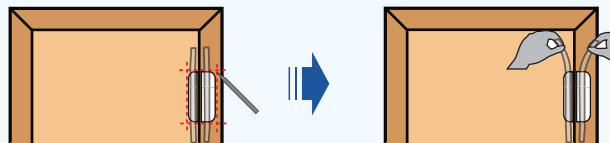
- Use adhesive tape to hold the sensor temporarily in place.
- Mount the sensor to a higher position to avoid obstacles or blockages. Depending on surroundings and obstructing factors, like walls or cabinets, the sensor may not transmit to the baby unit properly.

Follow the steps in **Test the sensor signal strength** section in the User's manual to test the sensor's signal strength with your parent unit. Make sure you receive **GOOD SIGNAL** message when you open the monitored door as usual.

NOTE

- If **NO SIGNAL** or **WEAK SIGNAL** message is displayed in test signal mode, or if you do not receive an alert when you open the door, move the baby unit closer to the mounting location or move the sensor closer to the baby unit.

After testing the sensor signal strength, mark the mounting location on the door, window, or medicine cabinet and its respective frame. Then, remove the adhesive tape and proceed to the mounting process.



NOTE

- The door images in this installation guide are for conceptual reference only.

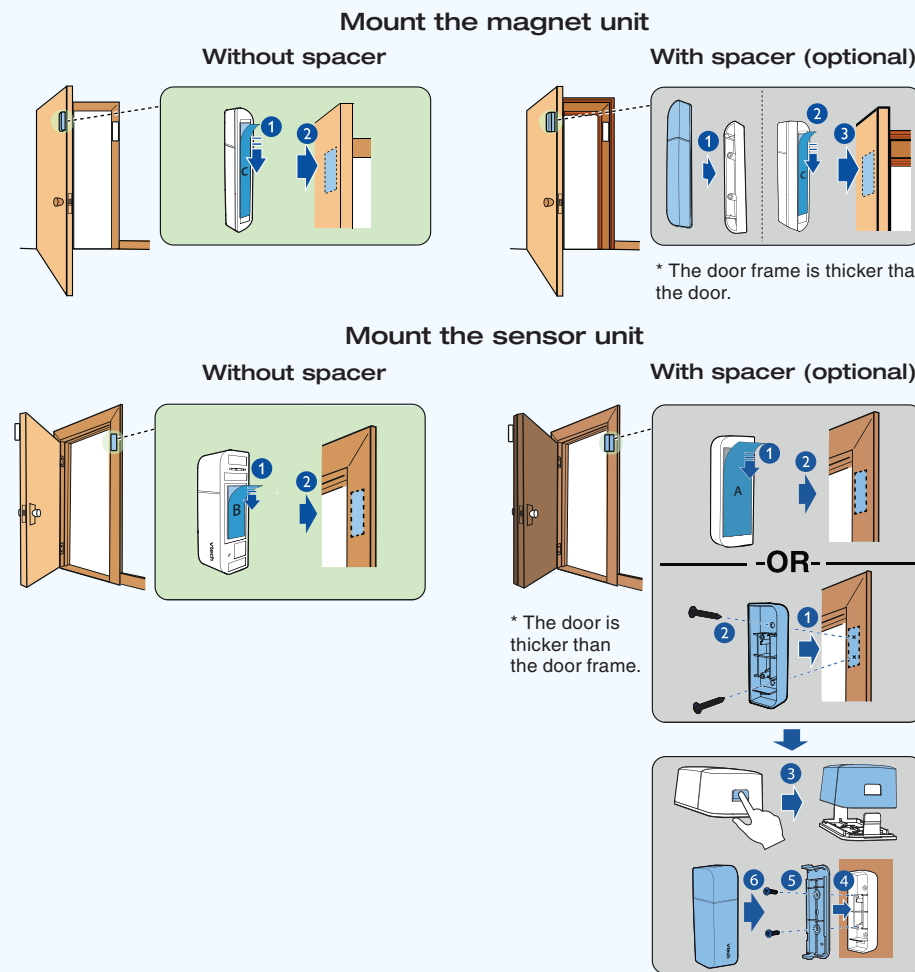
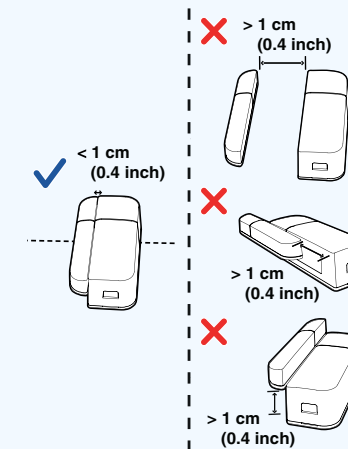
4 Mount

We recommend you mount the magnet unit on a door, window, or medicine cabinet, and mount the sensor unit on its respective frame.

You can use the spacers provided if there is a difference in level between the door and the frame. The spacer will help to align your sensor to the correct height. You can also use a spacer if the frame is too narrow or has some decorative molding.

NOTES

- You can mount the sensor unit with a mounting tape first, and then use screws later if you decide to mount it at that location for long term.
- Make sure the mounting surface is clean. A textured surface or any imperfections to a smooth surface can keep the mounting tape from making a strong bond.
- Align the magnet unit with sensor unit when mounting.
- The distance between the sensor unit and magnet unit must be **less than 1 cm (0.4 inch)**.



Go to
www.vtechphones.com
to register your product
for enhanced warranty
support and latest VTech
product news.

DM251
DM251-102

Wireless Monitoring
System
with Safe & Sound®
Digital Audio Monitor



vtech
Installation guide