

Go to www.vtechphones.com to register your product for enhanced warranty support and the latest VTech product news.

DM226
DM226-2
Digital Audio Monitor



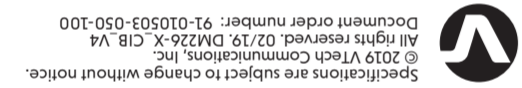
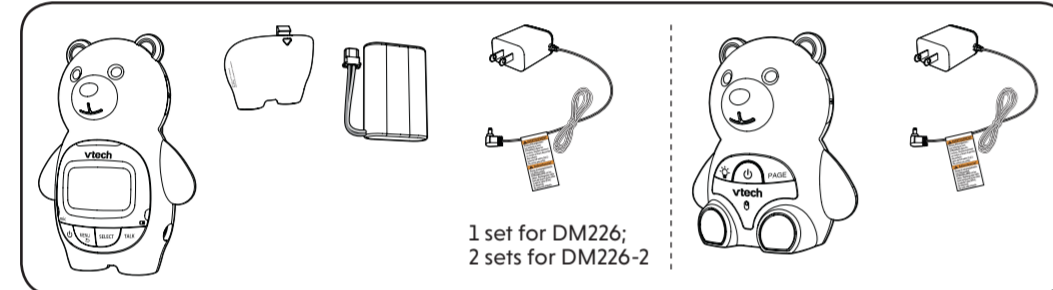
CONGRATULATIONS

on purchasing your new VTech product. Before using this product, please read **Important safety instructions**.

This manual has all the feature operations and troubleshooting necessary to install and operate your new VTech product. Please review this manual thoroughly to ensure proper installation and operation of this innovative and feature-rich VTech product.

For support, shopping, and everything new at VTech, visit our website at www.vtechphones.com.

WHAT'S IN THE BOX



Specifications are subject to change without notice.
© 2019 VTech Communications, Inc.
All rights reserved. 02/19, DM226-X, C18, V4
Document order number: 91-010503-050-100

Power requirement	Parent unit: 2.4 V Ni-MH battery
Baby unit power adapter:	Output: 6V DC 400mA
Parent unit power adapter:	Output: 6V DC 400mA
Frequency control	Crystal controlled PLL synthesizer
Transmit frequency	Baby unit: 1921.536-1928.448 MHz Parent unit: 1921.536-1928.448 MHz
Channels	5
LCD	35 (x) x 21.2 (y) mm B&W LCD
Nominal effective range	Maximum power allowed by FCC and IC. Actual operating range may vary according to environmental conditions at the time of use.
Power requirement	Parent unit: 2.4 V Ni-MH battery

TECHNICAL SPECIFICATIONS

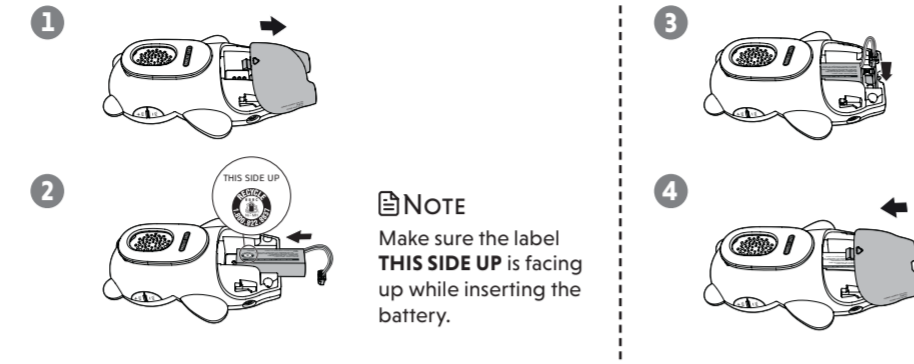
1 CONNECT AND CHARGE THE BATTERY

Install the parent unit battery

The parent unit runs on rechargeable battery or AC power. To continuously monitor your baby, keep the parent unit connected to AC power. With the battery alone, the parent unit can cordlessly run for a short time only.

NOTES

- Use only the battery supplied with this product.
- If the parent unit will not be used for a long time, disconnect and remove the battery to prevent possible leakage.



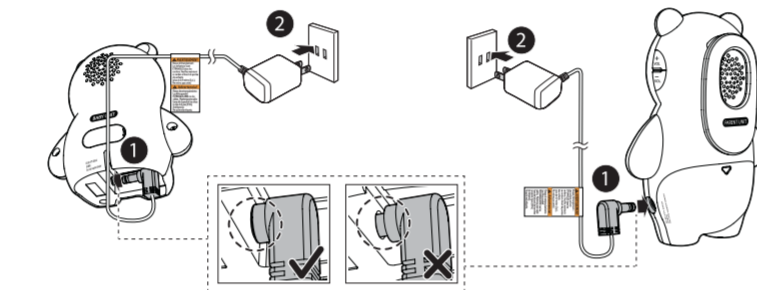
Replace the battery

To replace the battery, unplug the battery connector from the socket, and then pull the battery out of the battery compartment. Follow the steps above to install the battery.

Connect the baby monitor

NOTES

- Use only the power adapters supplied with this product.
- Make sure the baby monitor is not connected to an electric outlet that is controlled by a switch.
- Connect the power adapters in a vertical or floor mount position only. The adapters' prongs are not designed to hold the weight of baby monitor, so do not connect them to any ceiling, under-the-table, or cabinet outlets. Otherwise, the adapters may not properly connect to the outlets.
- Make sure the parent unit, the baby unit and the power adapter cords are out of reach of children.
- With audio reminder feature preset to **ON**, the parent unit plays an audio reminder when it is connected to a baby unit.



Charge the parent unit battery

When you have connected the parent unit and installed its battery for the first time or after power outage, the parent unit powers on automatically. The battery icon indicates the battery status (see the following table).

2 BEFORE USE

NOTE

- This baby monitor is intended as an aid. It is not a substitute for proper adult supervision, and should not be used as such.

Test your audio monitor

You may test the baby monitor before initial use, and at regular times thereafter.

CAUTION

- For hearing protection, make sure the parent unit is more than 6.5 feet (2 meters) away from the baby unit. If you hear any high-pitched noise, move the parent unit further until the noise stops. You can also press **vol** on the parent unit to lower or mute the noise.

- Make sure your baby unit and parent unit are on.
- Speak towards the microphone of the baby unit. You will hear the sound at the parent unit, and see the visual sound indicators light up.

NOTE

- When the parent unit displays **NOT LINKED** and **T** flashes, move the parent unit closer to the baby unit (observe the minimum distance of 6.5 feet/ 2 meters).

TIP

- Increase the speaker volume of the parent unit if you cannot hear the sounds transmitted from the baby unit.

Positioning the baby monitor

CAUTION

- Keep the baby units out of the reach of your baby. Never place or mount the baby units inside the baby's crib or playpen.

- Place the baby units more than 3 feet (1 meter) away from your baby.
- Place the parent unit more than 6.5 feet (2 meters) away from the baby unit.

NOTES

- The parent unit battery is fully charged after 11 hours of continuous charging.
- It takes longer to charge the battery when the parent unit is turned on. To shorten the charging time, turn the parent unit off while charging.
- The standby time varies depending on the sensitivity level you set, your actual use and the age of the battery.

BATTERY INDICATORS	BATTERY STATUS	ACTION
The battery icon is off.	No battery is installed but operates using AC power. -OR- Abnormal battery is detected.	Install the parent unit battery. Charge without interruption (at least 30 minutes).
The screen displays LOW BATTERY and □ . The □ light flashes.	The battery has very little charge and may be used for only a short time.	Charge without interruption (about 30 minutes).
The battery icon becomes solid ■ .	The battery is fully charged.	To keep the battery charged, connect it to AC power when not in use.

3 USING THE BABY MONITOR (CON'T)

Adjust the sound sensitivity of the baby unit

You can choose to hear sounds from the baby unit all the time, or to hear sounds that exceed a certain level. You can use the parent unit to adjust the microphone sensitivity of your baby unit. The higher the sensitivity level, the more sensitive the baby unit is in detecting sounds for transmitting to the parent unit. The VOX sensitivity level is preset to **HIGHEST**.

VOX SENSITIVITY LEVEL	Highest	High	Medium	Low	Lowest
DESCRIPTION	The parent unit speaker is constantly on, and you will hear all sounds (including background noises) from your baby's room.	The parent unit speaker turns on for soft babbling and louder sounds from your baby. It remains quiet when your baby sleeps soundly.	The parent unit speaker turns on for loud babbling and louder sounds from your baby. It remains quiet when your baby makes soft sounds.	The parent unit speaker turns on for crying and louder sounds from your baby. It remains quiet when your baby makes soft sounds.	The parent unit speaker turns on for loud crying or screeching sounds from your baby. It remains quiet when your baby makes soft sounds.

- Press **MENU/** when the parent unit is not in use.
- Press **SELECT** to select **VOX LEVEL**.
- Press **+** or **-** to choose the desired sensitivity level.
- Press **SELECT** to confirm your selection. The screen displays **SAVED** and you hear a confirmation tone.

NOTE

- To enter the **VOX Level** menu of the parent unit, the baby unit must be turned on.

Sound alert

If you want the parent unit alerts you with sound, especially when the baby unit detects loud sounds, you can turn on the sound alert feature. This feature is preset to **OFF**.

Once this feature is on, **Ⓜ** is shown on LCD display. When the visual sound indicator hits the red light range, i.e. the baby unit detects loud sounds, your parent unit beeps and **Ⓜ** flashes.

- Press **MENU/** when the parent unit is not in use.
- Press **+** or **-** to choose **SOUND ALERT**, then press **SELECT**.
- Press **+** or **-** to choose **ON** or **OFF**.
- Press **SELECT** to confirm your selection. The screen displays **SAVED** and you hear a confirmation tone.

NOTE

- The sound alert setting on each parent unit is independent.

Vibration alert

You can set your parent unit to vibrate and alert you, whenever the baby unit detects loud sounds. This feature is preset to **OFF**.

Once this feature is on, **Ⓜ** is shown on LCD display. When the visual sound indicator hits the red light range, i.e. the baby unit detects loud sounds, your parent unit vibrates and **Ⓜ** flashes.

- Press **MENU/** when the parent unit is not in use.
- Press **+** or **-** to choose **VIBE ALERT**, then press **SELECT**.
- Press **+** or **-** to choose **ON** or **OFF**.
- Press **SELECT** to confirm your selection. The screen displays **SAVED** and you hear a confirmation tone.

NOTES

- Each time you set the vibration alert to **ON**, the parent unit vibrates briefly after you press **SELECT**.
- The vibration alert setting on each parent unit is independent.

Nightlight

Both your parent unit(s) and baby unit allow you to turn on or off the nightlight on the baby unit.

Turn on/off the nightlight using the baby unit:

- Press **☾** to turn on the nightlight.
- Press **☾** again to turn off the nightlight.

Turn on/off the nightlight using the parent unit:

- Press **MENU/** when the parent unit is not in use.
- Press **+** or **-** to choose **NIGHTLIGHT**, then press **SELECT**.
- Press **+** or **-** to choose **ON** or **OFF**.
- Press **SELECT** to confirm your selection. The screen displays **SAVED** and you hear a confirmation tone.

NOTES

- When the nightlight is turned on, the parent unit displays **☾**.
- The nightlight on baby unit operates even when the parent unit battery is out of charge or has been turned off.
- If the parent unit lost link, the nightlight icon on its LCD display will disappear, regardless of the nightlight status.

Language

You can select a language (**English, Spanish or French**) to be used in all screen displays. The language is preset to **English**.

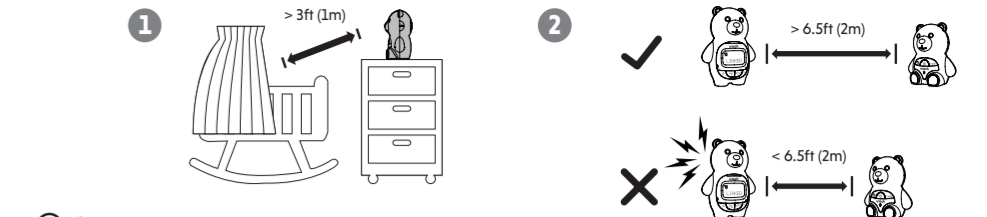
- Press **MENU/** when the parent unit is not in use.
- Press **+** or **-** to choose **LANGUAGE**, then press **SELECT**.
- Press **+** or **-** to choose **ENGLISH, ESPANOL, or FRANCAIS**.
- Press **SELECT** to confirm your selection. The screen displays **SAVED** and you hear a confirmation tone.

NOTE

- The language setting on each parent unit is independent.

Audio Reminder

With audio reminder feature preset to **ON**, the parent unit plays an audio reminder when it is connected to a baby unit. It reminds you to place the baby unit at least 3 feet (1 meter) away from your baby, and keep the cords out of the reach of children.



CAUTION

- The default volume of your parent unit is level 3. If you experience high-pitched screeching noise from your baby monitor while positioning:
 - Make sure your baby unit and parent unit are more than 6.5 feet (2 meters) apart, OR
 - Turn down the volume of your parent unit.

Operating range

The operating range of the baby monitor is up to 1,000 feet (300 meters) outdoors. The actual operating range may vary depending on the environmental conditions, and other interferences such as walls, doors, and other obstructions.

3 USING THE BABY MONITOR

Power on or off the baby unit

- Press **⏻** to power on the baby unit. The power light turns on.
- Press and hold **⏻** to power off the baby unit. The power light turns off.

Power on or off the parent unit

- Press and hold **⏻** to power on the parent unit. The screen turns on.
- Press and hold **⏻** again to power off the parent unit. The screen turns off.

NOTE

- The parent unit powers on automatically once it is connected to power socket or battery installed. The baby unit also powers on automatically once connected to power socket.

Adjust the speaker volume for baby unit

- Press **+** or **-** on the baby unit at any time.

NOTE

- The speaker of baby unit cannot be muted.

Adjust the speaker volume for parent unit

You can adjust the speaker volume from **VOLUME 1** to **VOLUME 5**, or turn it off. The speaker volume is preset to **VOLUME 3**.

- Press **+** or **-** when the parent unit is not in use.
- When the speaker volume is set to **VOLUME OFF**, the screen displays **⏻**.

- Press **MENU/** when the parent unit is not in use.
- Press **+** or **-** to choose **REMINDER**, then press **SELECT**.
- Press **+** or **-** to choose **ON** or **OFF**.
- Press **SELECT** to confirm your selection, and you hear a confirmation tone.

NOTES

- You can press **+** or **-** to adjust the volume when the parent unit is playing the reminder.
- If the speaker volume of the parent unit is turned off, it will change to the default volume level when the parent unit plays the reminder.

Set default

Use this feature to restore to the default settings. Restoring the default settings on one parent unit will also reset the shared settings for VOX sensitivity level of the other parent unit.

- Press **MENU/** when the parent unit is not in use.
- Press **+** or **-** to choose **SET DEFAULT**, then press **SELECT**.
- Press **+** or **-** to choose **YES** or **NO**.
- When you choose **YES**, press **SELECT** to confirm your selection, and you hear a confirmation tone.

-OR-

When you choose **NO**, press **SELECT** to confirm your selection. The screen displays the previous menu.

Talk to the baby unit

You can broadcast messages from a parent unit to the baby unit and the other parent unit. If you have two parent units, you can use both of them at the same time to talk to the baby unit.

- Press and hold **TALK** on the side of the parent unit. The screen displays **TALK** when the voice connection to the baby unit is made.
- Speak towards the **MIC** on the parent unit. Your voice is broadcast to the baby unit and the other parent unit.

NOTES

- If you have two parent units, and you use one of them to talk to your baby, your voice will be broadcast to both the baby unit and the other parent unit. The other parent unit displays **TALKBACK**. However, no sound will transmit from the baby unit to any parent unit during broadcasting.
- If speaker volume of the parent unit has been turned off before the talk, it will change to default volume level after the talk finished.

Find/page the parent unit

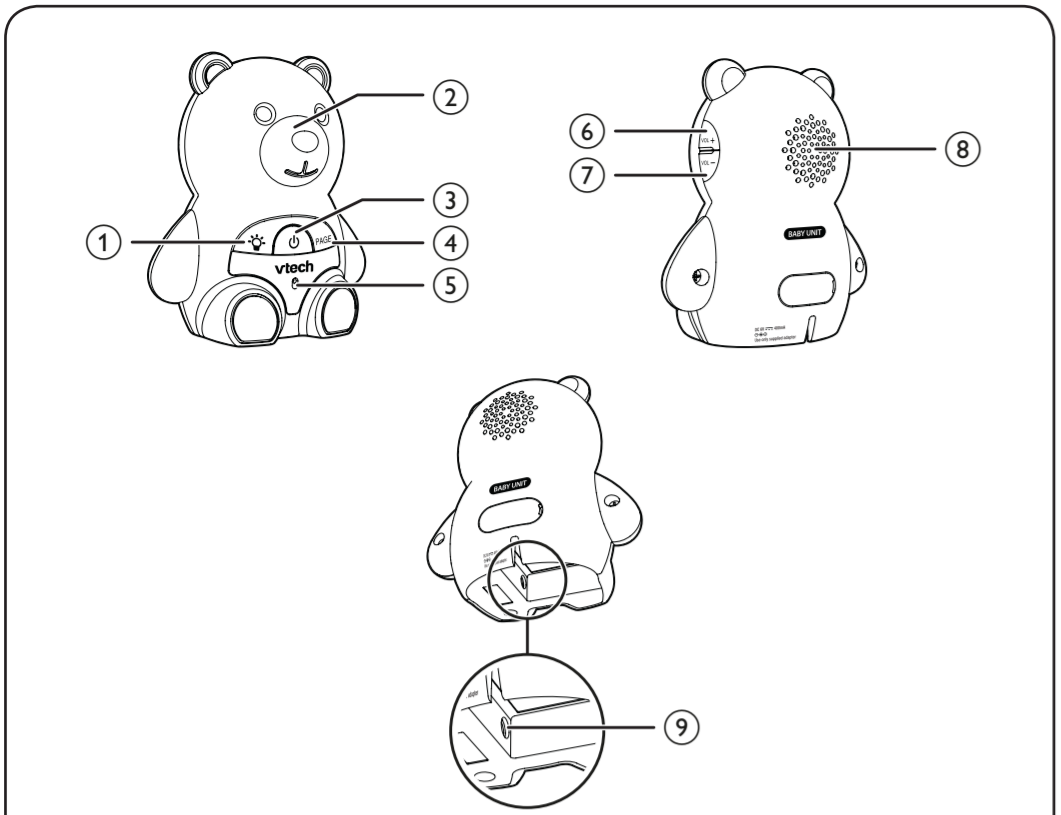
Use this feature to locate misplaced parent units.

- Press **PAGE** on the baby unit. All idle parent units ring and display **PAGING**.
- To end paging, press any key on the parent unit, or press **PAGE** on the baby unit.

NOTES

- Paging rings all parent units even if the speaker volume of parent unit is set to **VOLUME OFF**.
- The baby unit cannot page any parent unit that is turned off, out of range, or talking to the baby unit.

BABY UNIT OVERVIEW



- 1 Night light
2 On/off
3 PAGE
4 Microphone
5 VOL +
6 VOL -
7 Speaker
8 Power jack

IMPORTANT SAFETY INSTRUCTIONS

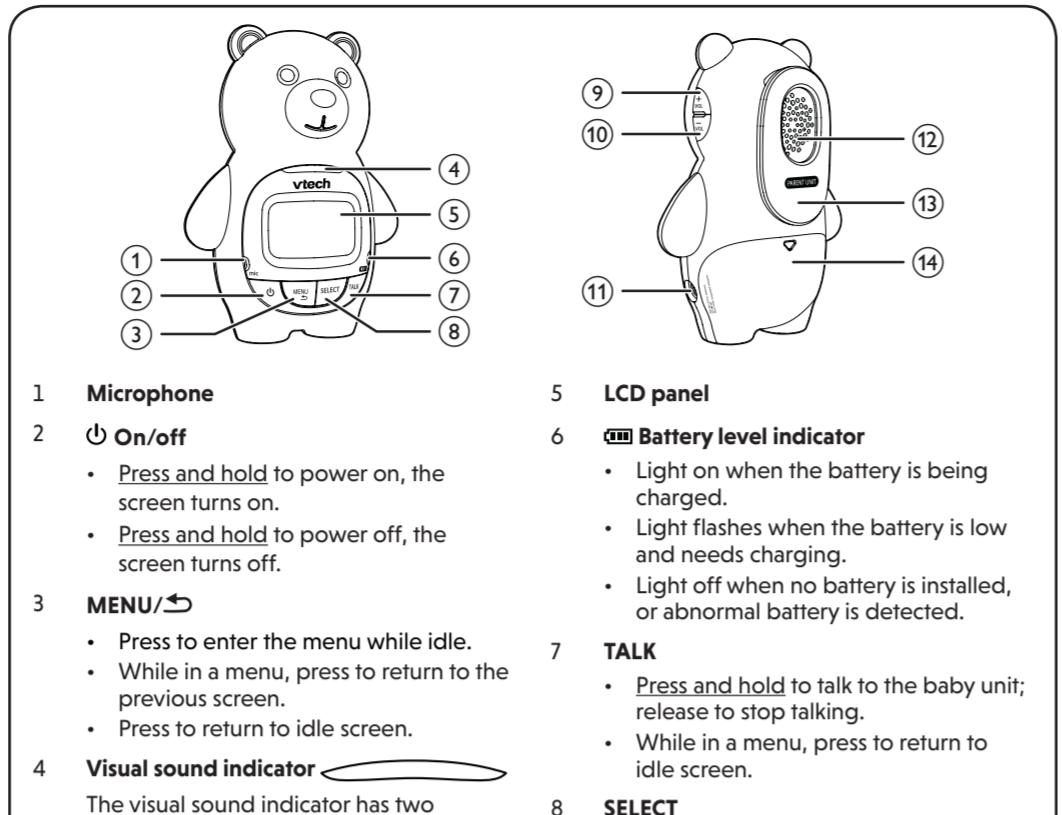
- When using your equipment, basic safety precautions should always be followed to reduce the risk of fire, electric shock and injury, including the following:
1. Follow all warnings and instructions marked on the product.
2. Adult setup is required.
3. This product is not a substitute for adult supervision of the infant.
4. Do not use this product near water.
5. CAUTION: Use only the batteries indicated in this manual.
6. Use only the adapters included with this product.
7. The power adapters are intended to be correctly oriented in a vertical or floor mount position.
8. For pluggable equipment, the socket-outlet shall be installed near the equipment and shall be easily accessible.
9. Unplug this product from the wall outlet before cleaning.
10. Unplug the power cords before replacing batteries.
11. Do not cut off the power adapters to replace them with other plugs.
12. Do not allow anything to rest on the power cords.
13. This product should be operated only from the type of power source indicated on the marking label.
14. Do not overload wall outlets or use an extension cord.
15. Do not place this product on an unstable table, shelf, stand or other unstable surfaces.
16. This product should not be placed in any area where proper ventilation is not provided.
17. Never push objects of any kind into this product through the slots because they may touch dangerous voltage points or create a short circuit.
18. To reduce the risk of electric shock, do not disassemble this product, but take it to an authorized service facility.
19. You should test the sound reception every time you turn on the units or move one of the components.
20. Periodically examine all components for damage.
21. Be aware of possible loss of privacy while using public airways.
22. Children should be supervised to ensure that they do not play with the product.
23. The product is not intended for use by persons (including children) with reduced physical, sensory or mental capabilities.

SAVE THESE INSTRUCTIONS

- 1. Use and store the product at a temperature between 32°F and 104°F.
2. Do not expose the product to extreme cold, heat or direct sunlight.
3. Batteries should not be exposed to excessive heat such as bright sunlight or fire.
4. Warning—Strangulation Hazard—Children have STRANGLED in cords. Keep this cord out of the reach of children (more than 3 ft (0.9 m) away). Do not remove this tag.
5. Never place the baby unit inside the baby's crib or playpen.
6. Other electronic products may cause interference with your baby monitor.
Precautions for users of implanted cardiac pacemakers
Cardiac pacemakers (applies only to digital cordless devices):
Wireless Technology Research, LLC (WTR), an independent research entity, led a multidisciplinary evaluation of the interference between portable wireless devices and implanted cardiac pacemakers.

- Pacemaker patients
• Should keep wireless devices at least six inches from the pacemaker.
• Should NOT place wireless devices directly over the pacemaker, such as in a breast pocket, when it is turned ON.
Electromagnetic fields (EMF)
This Vtech product complies with all standards regarding electromagnetic fields (EMF). If handled properly and according to the instructions in this user's manual, the product is safe to be used based on scientific evidence available today.

PARENT UNIT OVERVIEW



- 1 Microphone
2 On/off
3 MENU
4 Visual sound indicator
5 LCD panel
6 Battery level indicator
7 TALK
8 SELECT
9 VOL
10 VOL
11 Power jack
12 Speaker
13 Belt clip
14 Battery compartment cover

THE RBRC® SEAL

The RBRC® seal on the nickel-metal battery indicates that VTECH Communications, Inc. is voluntarily participating in an industry program to collect and recycle these batteries at the end of their useful lives, when taken out of service within the United States and Canada.
The RBRC® program provides a convenient alternative to placing used nickel-metal batteries into the trash or municipal waste, which may be illegal in your area.
Vtech's participation in RBRC® makes it easy for you to drop off the spent battery at local retailers participating in the RBRC® program or at authorized VTECH product service centers.

FCC AND IC REGULATIONS

This equipment has been tested and found to comply with the requirements for a Class B digital device under Part 15 of the Federal Communications Commission (FCC) rules. Operation is subject to the following two conditions: (1) this device may not cause harmful interference, and (2) this device must accept any interference received, including interference that may cause undesired operation.
To ensure safety of users, the FCC has established criteria for the amount of radio frequency energy that can be safely absorbed by a user or bystander according to the intended usage of the product.
This product has been tested and found to comply with the FCC criteria. The baby unit shall be installed and used such that parts of all persons' body are maintained at a distance of approximately 8 in (20 cm) or more. The transmitter and antenna of the parent unit shall be held at least 1 in (2.5 cm) from your face.

Industry Canada
This device contains licence-exempt transmitter(s)/receiver(s) that comply with Innovation, Science and Economic Development Canada's license-exempt RSS(s). Operation is subject to the following two conditions: (1) This device may not cause interference. (2) This device must accept any interference, including interference that may cause undesired operation of the device.
The term "IC:" before the certification/registration number only signifies that the Industry Canada technical specifications were met.
This product meets the applicable Innovation, Science and Economic Development Canada technical specifications.
RF radiation exposure statement
The baby unit complies with FCC RF radiation exposure limits set forth for an uncontrolled environment. The baby unit should be installed and operated with a minimum distance of 8 in (20 cm) between the baby unit and all persons' body. For body worn operation, this parent unit has been tested and meets the FCC RF exposure guidelines when used with the accessories supplied or designated for this product. Use of other accessories may not ensure compliance with FCC RF exposure guidelines. This transmitter must not be co-located or operating in conjunction with any other antenna or transmitter. This equipment complies also with Industry Canada RSS-102 with respect to Canada's Health Code 6 for Exposure of Humans to RF Fields.

CALIFORNIA ENERGY COMMISSION BATTERY CHARGING TESTING MODE

This baby monitor meets the California Energy Commission (CEC) regulations for energy consumption. Your baby monitor is set up to comply with the energy-conserving standards right out of the box. Follow the instructions to install and charge the battery. The CEC battery charging testing mode is activated while charging. Even if the parent unit is paired to baby units, the CEC battery charging testing mode is activated while it is powered off and charging.

PARENT UNIT ICONS

Status icons
Connection status
• [Signal strength icon] displays when strong signal strength is detected between the baby unit and the parent unit.
• [Signal strength icon] displays when moderate signal strength is detected between the baby unit and the parent unit.
• [Signal strength icon] displays when the weak signal strength is detected between the baby unit and the parent unit.
• [Signal strength icon] flashes when the link between the baby unit and the parent unit is lost.
Nightlight
• [Nightlight icon] Displays when the nightlight is turned on.
Sound alert
• [Sound alert icon] Displays when the sound alert of the parent unit is turned on.
• [Sound alert icon] Flashes when there are loud sounds detected from the baby unit.
Vibration alert
• [Vibration alert icon] Displays when the vibration alert of the parent unit is turned on.
• [Vibration alert icon] Flashes when there are loud sounds detected from the baby unit.
Volume off
• [Volume off icon] Displays when the patient unit speaker volume is turned off.
Battery status
• [Battery status icon] animates when the battery is charging.
• [Battery status icon] displays solid when the battery is fully charged.
• [Battery status icon] flashes when the battery is in low level and needs charging.
• [Battery status icon] No battery icon displays when there is no battery installed.

FOR C-UL COMPLIANCE ONLY

Measures de sécurité importants
Lorsque vous utilisez votre appareil, vous devez toujours suivre certaines mesures de précaution de base afin de réduire les risques d'incendie, d'électrocution et de blessures corporelles, dont ceux qui suivent:
1. Observez toutes les instructions et mises en garde inscrites sur l'appareil.
2. L'installation par un adulte est requise.
3. Ce produit ne remplace pas la surveillance adulte du nourrisson. La supervision du nourrisson est la responsabilité du parent ou de la personne qui s'occupe de l'enfant.
4. N'utilisez pas cet appareil près de l'eau ni de toute autre source d'humidité, par exemple, près d'une baignoire, cuve à lessive, évier de cuisine, dans un sous-sol humide ni près d'une piscine, dans un sous-sol humide ou une douche.

- 1. Ne coupez pas les cordons d'alimentation pour remplacer les fiches, car ceci peut présenter un danger potentiel.
2. Ne laissez aucun objet reposant appuyer sur le cordon d'alimentation.
3. Ne surchargez pas les prises de courant murales ni les rallonges électriques.
4. Ne placez pas cet appareil sur un chariot, meuble, trépid, support de montage ni table chancelantes.
5. Les trous et ouvertures du boîtier, situés à l'arrière de l'appareil ou sous celui-ci, servent à aérer l'appareil.
6. L'ouverture du boîtier ou le retrait de toutes pièces que contient cet appareil, à l'exception de l'accès autorisé à certaines portes ou ouvertures, risque de vous exposer à des risques de tension dangereuse ou d'autres dangers.
7. Soyez avisé de la perte de la confidentialité lorsque vous utilisez les ondes cellulaires.
8. N'enfoncez jamais d'objets à travers les ouvertures de cet appareil, car ils pourraient entrer en contact avec des points de tension dangereux ou courts-circuits qui peuvent dégrader en incendies ou en risques d'électrocution.
9. Débranchez le produit de la prise de courant avant de procéder au nettoyage.
10. Ne laissez aucun objet reposant appuyer sur le cordon d'alimentation.
11. Ne coupez pas les cordons d'alimentation pour remplacer les fiches, car ceci peut présenter un danger potentiel.
12. Examinez les câbles et assurez-vous qu'ils ne soient pas endommagés.
13. N'exposez pas cet appareil à des froids ou des chaleurs extrêmes, ainsi qu'à la lumière directe du soleil.
14. Assurez-vous que le montage et le cordon de l'appareil sont toujours hors de portée des enfants, à au moins 1 mètre (3 pieds) de l'enfant ou du berceau, pour éviter tout risque de strangulation.
15. N'ajoutez jamais d'objets à l'intérieur du berceau ou du parc de bébé, ni jamais couvrir le moniteur ou l'unité (s) portable avec un article tel une serviette ou une couverture.
16. D'autres équipements électroniques peuvent produire des interférences sur votre moniteur vidéo et audio.
17. L'étude effectuée par l'organisme WRS n'a pas identifié de risque pour les détenteurs de stimulateurs cardiaques couchés par les gens qui utilisent des dispositifs sans fil à proximité de ceux-ci.

Mises en garde
1. Utilisez et entreposez le produit à une température entre 0 °C (32° F) et 40 °C (104° F).
2. N'exposez pas cet appareil à des froids ou des chaleurs extrêmes, ainsi qu'à la lumière directe du soleil.
3. Le bloc-piles ne doit pas être exposé à la chaleur excessive telle que la lumière du soleil ou au feu.
4. Assurez-vous que le montage et le cordon de l'appareil sont toujours hors de portée des enfants, à au moins 1 mètre (3 pieds) de l'enfant ou du berceau, pour éviter tout risque de strangulation.
5. N'ajoutez jamais d'objets à l'intérieur du berceau ou du parc de bébé, ni jamais couvrir le moniteur ou l'unité (s) portable avec un article tel une serviette ou une couverture.
6. D'autres équipements électroniques peuvent produire des interférences sur votre moniteur vidéo et audio.
Champs électromagnétiques (EMF)
Ce produit de Vtech est conforme à toutes les normes se rapportant aux champs électromagnétiques (EMF) standard.
Avis aux détenteurs de stimulateurs cardiaques
• Vous devriez maintenir les dispositifs sans fil à au moins six pouces du stimulateur cardiaque.
• Ils ne doivent PAS placer le téléphone sans fil directement sur le stimulateur cardiaque, tel que dans une poche de chemise, lorsque celui-ci est en marche.

Stimulateurs cardiaques implantés dans l'organisme
Les stimulateurs cardiaques (ne s'applique qu'aux dispositifs numériques sans fil):
L'organisme "Wireless Technology Research, LLC (WTR)" a effectué une recherche indépendante, a mené une évaluation pluridisciplinaire des interférences entre les stimulateurs cardiaques implantés et des appareils électroniques tels que des routeurs sans fil, radios, téléphones cellulaires, interphones, monteurs, téléphones, ordinateurs personnels, électromagnétiques et téléphones sans fil.
Avis aux détenteurs de stimulateurs cardiaques
• Vous devriez maintenir les dispositifs sans fil à au moins six pouces du stimulateur cardiaque.
• Ils ne doivent PAS placer le téléphone sans fil directement sur le stimulateur cardiaque, tel que dans une poche de chemise, lorsque celui-ci est en marche.
L'étude effectuée par l'organisme WRS n'a pas identifié de risque pour les détenteurs de stimulateurs cardiaques couchés par les gens qui utilisent des dispositifs sans fil à proximité de ceux-ci.

GENERAL PRODUCT CARE

- To keep this product working well and looking good, follow these guidelines:
• Avoid putting it near heating appliances and devices that generate electrical noise (for example, motors or fluorescent lamps).
• DO NOT expose it to direct sunlight or moisture.
• Avoid dropping the product or treating it roughly.
• Clean with a soft cloth.
• DO NOT immerse the parent unit and the baby unit in water and do not clean them under the tap.
• DO NOT use cleaning spray or liquid cleaners.
• Make sure the baby unit and parent unit are dry before you connect them to the mains again.

STORAGE

When you are not going to use the baby monitor for some time, remove the rechargeable battery from the parent unit. Store the parent unit, the baby unit and the adapters in a cool and dry place.

FREQUENTLY ASKED QUESTIONS

Table with 2 columns: Question and Answer.
Questions include: Why does the baby monitor not respond normally?, Why doesn't the screen of the parent unit go on when I switch on the unit?, Why doesn't the power light of the baby unit go on when I switch on the unit?, Why does the baby monitor produce a high-pitched noise?, Why does the parent unit react too quickly to other sounds?, Why don't I hear a sound/ You can't hear my baby cry?, Why does the parent unit beep?, Why can't I establish a connection? Why is the connection lost every now and then? Why are there sound interruptions?, Why doesn't the battery icon show on LCD display even I have properly installed the battery?
Answers provide troubleshooting steps and technical details.