



User’s manual
BV73121BL/BV73121PK/
BV73121GY/BV73122BL/
BV73122PK/BV73122GY

Full Color Video and Audio
Monitor



Congratulations

on purchasing your new VTech product. Before using this product, please read **Important safety instructions**.

For support, shopping, and everything new at VTech, visit our website at www.vtechphones.com.

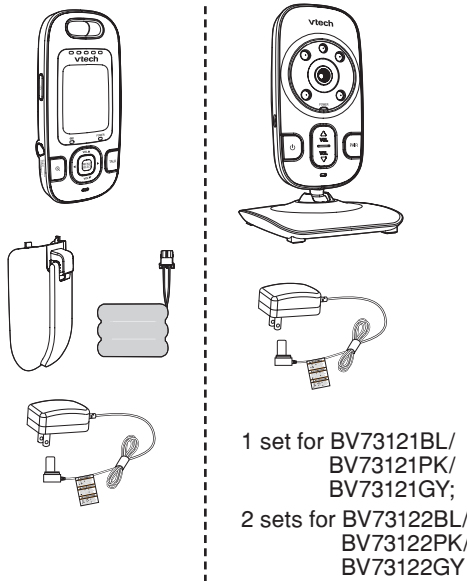
Register online to get an additional 3-month warranty!

Visit www.vtechphones.com.

Registration
Register your product online for enhanced warranty support.

Product news
Learn about the latest VTech products.

What’s in the box

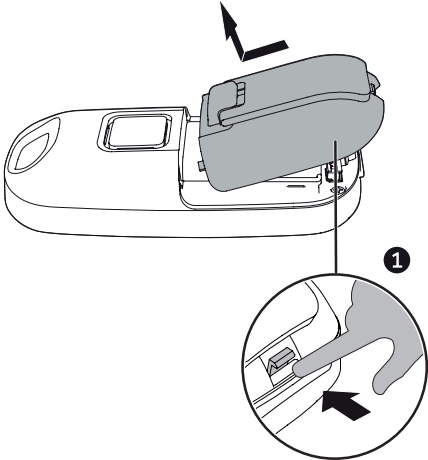


Install the battery

The parent unit runs on rechargeable battery or AC power. To continuously monitor your baby, make sure you use both battery and AC power at the same time. With the battery alone, the parent unit can cordlessly run for a short time only.

Install the battery as shown below.

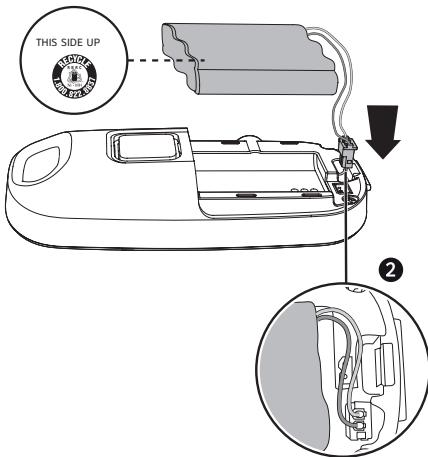
1. Push the detent of the battery compartment cover and lift the cover to open.



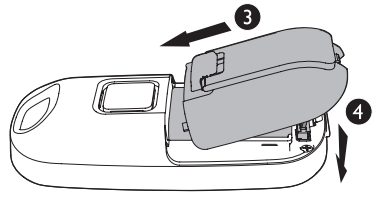
2. Plug the battery connector securely into the socket.

NOTES

- Make sure the supplied rechargeable battery with the label **THIS SIDE UP** facing up.
- Arrange the battery wire to avoid it obstructing the battery cover when closing.



3. Align the battery compartment cover against the battery compartment.
4. Push the battery compartment cover down and click into place.



Replace the battery

To replace the battery, pull the battery out of the battery compartment and unplug the battery connector from the socket, then follow the steps above to install the battery.

NOTES

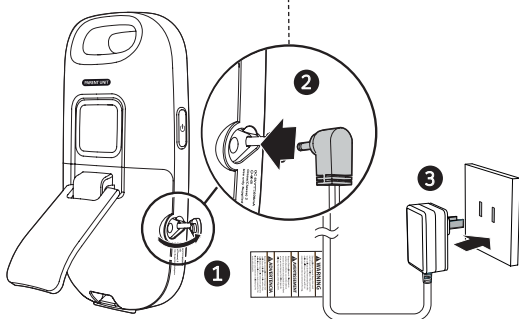
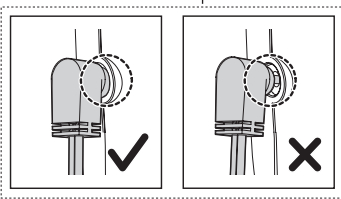
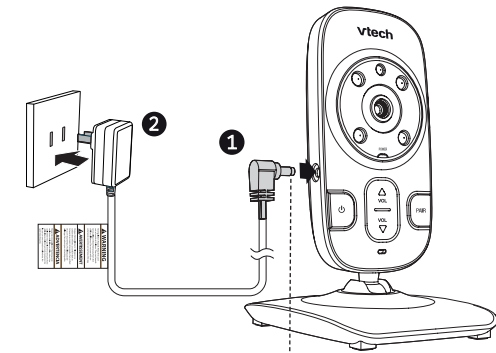
- The operating time for using the rechargeable battery is short. If you want to monitor your baby for a long time, we recommend that you connect the parent unit to AC power.
- If the parent unit will not be used for a long time, disconnect and remove the battery to prevent possible leakage.

Connect and charge the battery

NOTES

- Use only the battery supplied with this product.
- Use only the parent unit power adapter or the baby unit power adapter supplied with this product.
- Make sure the electrical outlets are not controlled by wall switches.
- The parent unit power adapter and baby unit power adapter are intended to be correctly oriented in a vertical or floor mount position. The prongs are not designed to hold the plug in place if it is plugged into a ceiling, under-the-table or cabinet outlet.
- Make sure the parent unit, the baby unit and the power adapter cords are out of reach of children.

Connect the baby monitor



Charge the parent unit battery

Once you have connected the parent unit and installed its battery, press **⏻** to turn it on. The battery icon indicates the battery status (see the following table).

NOTES

- The parent unit battery is fully charged after 12 hours of continuous charging.
- It takes longer to charge the battery when the parent unit is turned on. To shorten the charging time, turn the parent unit off while charging.
- The standby time varies depending on the sensitivity level you set, your actual use and the age of the battery.

Battery indicators	Battery status	Action
The battery icon is off and displays.	No battery is installed but operates using AC power, or the battery has been installed incorrectly.	Install the parent unit battery. Charge without interruption (at least 30 minutes).
The screen displays . The light flashes.	The battery has very little charge and may be used for only a short time.	Charge without interruption (about 30 minutes).
The battery icon becomes solid .	The battery is fully charged.	To keep the battery charged, connect it to AC power when not in use.

Before use

NOTE

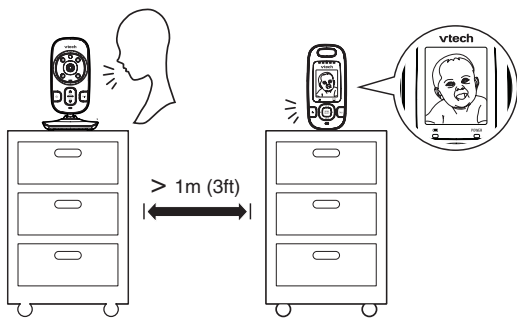
This baby monitor is intended as an aid. It is not a substitute for proper adult supervision, and should not be used as such.

Test your baby monitor

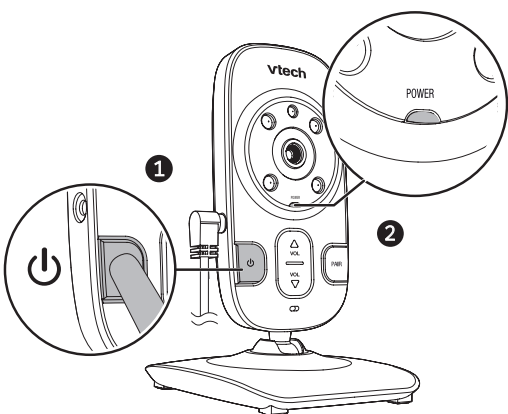
You may test the baby monitor before initial use, and at regular times thereafter.

CAUTION

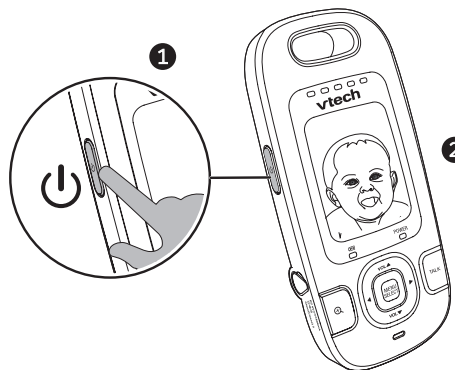
For hearing protection, make sure the parent unit is more than 1 meter (3 feet) away from the baby units. If you hear any high-pitched noise, move the parent unit further until the noise stops. You can also press **VOL▼** on the parent unit to lower or mute the noise.



1. Press **⏻** to turn on the baby unit. The **POWER** light turns on.



2. Press **⏻** to turn on the parent unit. The screen turns on and display images from the baby unit.



- Speak towards the microphone of the baby unit. You will hear the sound at the parent unit.

NOTE

The parent unit displays while searching for a baby unit. If no baby unit is found after a while, it displays . Move the parent unit closer to the baby unit (observe the minimum distance of 1 meter/ 3 feet). You can also check if the baby monitor is connected to a live power socket and switched on.

Positioning the baby monitor

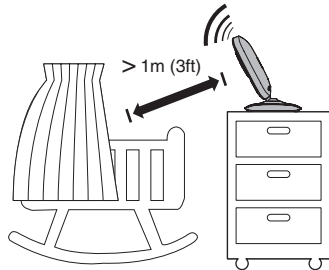
CAUTION

Keep the baby unit out of the reach of the baby. Never place or mount the baby unit inside the baby’s crib or playpen.

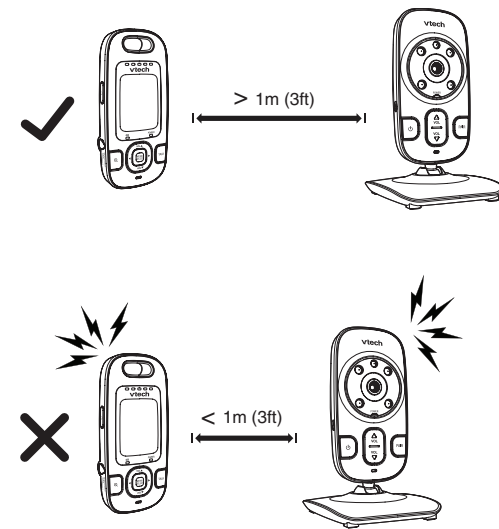
NOTE

To avoid interference from other electronic devices, place your baby monitor far away from devices such as wireless routers, microwaves, cell phones and computers.

1. Place the baby unit more than 1 meter (3 feet) away from your baby.



2. Place the parent unit more than 1 meter (3 feet) away from the baby unit.



CAUTION

The default volume of your parent unit is . If you experience high-pitched screeching noise from your baby monitor while positioning:

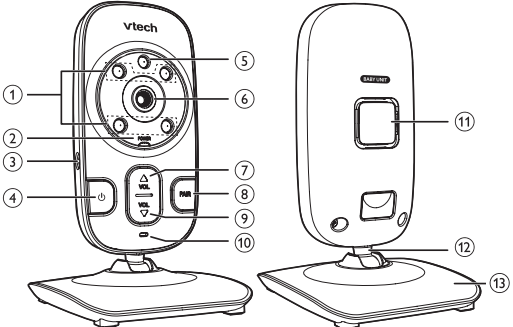
- Make sure your baby units and parent unit are more than 1 meter (3 feet) apart, OR
- Turn down the volume of your parent unit.

Operating range

The operating range of the baby monitor is up to 300 meters (1,000 feet) outdoors or 50 meters (160 feet) indoors. The actual operating range may vary depending on the environmental conditions, and other interferences such as walls, doors, and other obstructions.

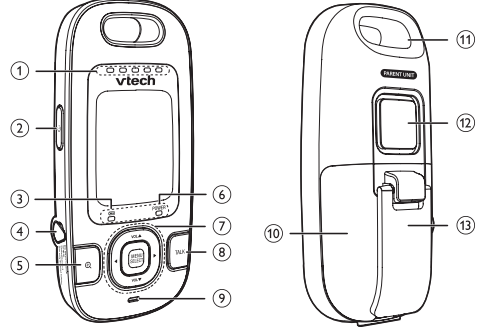
Overview

Baby unit overview



1	Infrared LEDs Backup light for night vision.
2	POWER on/off indicator <ul style="list-style-type: none">• On when the baby unit is powered on and currently linked to parent unit.• Flashes when the baby unit is not linked to a parent unit; or the pairing process is in progress; or the parent unit is not viewing this baby unit.
3	Power jack
4	⏻ (On/Off) <ul style="list-style-type: none">• Press to power on.• Press and hold to power off.
5	Night sensor
6	Camera
7	▲/VOL Press to increase the listening volume.
8	PAIR Press and hold to pair to the parent unit.
9	▼/VOL Press to decrease the listening volume.
10	Microphone
11	Speaker
12	Ball joint stand Pan or tilt to adjust the camera angle.
13	Base

Parent unit overview



1	Visual sound indicator The visual sound indicator has two functions. One is to show the sound level detected by the baby unit. The other one is to show the volume level during speaker volume setting. Sound level detected by the baby unit <ul style="list-style-type: none">• One to three green lights indicate a moderate sound level detected by the baby unit.• Additional red lights indicate a higher sound level detected by the baby unit (e.g. baby crying loudly). Speaker volume level <ul style="list-style-type: none">• One to three green lights indicate Level 1 to Level 3 of the speaker volume setting.• Additional red lights indicate Level 4 to Level 5 of the speaker volume setting.
2	⏻(On/off) <ul style="list-style-type: none">• Press to power on.• Press and hold to power off.• Press to turn on or off the screen.
3	 Battery level indicator <ul style="list-style-type: none">• Light on when the parent unit battery is being charged.• Light flashes when the parent unit battery is low and needs charging.• Light off when the parent unit battery is fully charged, or when no battery is installed.
4	Power jack

5	 <ul style="list-style-type: none">• While viewing image, press to zoom in/out.
6	POWER on/off indicator <ul style="list-style-type: none">• On when the parent unit is turned on.• Flashes when in pairing process, or when connecting to baby unit while the baby unit is not available.
7	Control key panel MENU/SELECT <ul style="list-style-type: none">• Press to enter the menu.• While in a menu, press to choose an item, or save a setting. VOL▲ <ul style="list-style-type: none">• Press to increase the speaker volume.• While in the menu, press to scroll up.• While viewing a zoomed image, press and hold to move the image upward. VOL▼ <ul style="list-style-type: none">• Press to decrease the speaker volume.• While in the menu, press to scroll down.• While viewing a zoomed image, press and hold to move the image downward. ◀ <ul style="list-style-type: none">• While in a menu, press to choose the option on the left side.• While viewing a zoomed image, press and hold to move the image leftward. ▶ <ul style="list-style-type: none">• While in a menu, press to choose the option on the right side.• While viewing a zoomed image, press and hold to move the image rightward.
8	TALK While viewing image, press and hold to talk to the selected baby unit.
9	Microphone
10	Battery compartment cover
11	Slot for portable use
12	Speaker
13	Stand

Parent unit display icons

	Connection status <ul style="list-style-type: none">- displays when strong signal strength is detected between the baby unit and the parent unit.- or displays when moderate signal strength is detected between the baby unit and the parent unit.- displays when the link between the baby unit and the parent unit is lost.- displays when the parent unit is searching for a baby unit.
	Current view status - Display the number of the baby unit that is being viewed.
	Zoom - Display when the camera at the baby unit has zoomed in.
	Volume off - Display when the volume is turned off.
	Sound activation - Display when the sound activation is on.
	Battery status <ul style="list-style-type: none">- animates when the battery is charging.- displays solid when the battery is fully charged.- displays when the battery is low and needs charging.- displays when no battery is installed but operates using AC power, or the battery has been installed incorrectly.

Parent unit main menu icons

	Camera selection <ul style="list-style-type: none">• You can select the screen to view images from a particular baby unit, or view all baby units in Patrol Mode.
	Brightness <ul style="list-style-type: none">• You can change the brightness of the screen. The LCD brightness is preset to . - brightest screen display. - brighter screen display. - average screen brightness. - darker screen display. - darkest screen display.
	Sensitivity <ul style="list-style-type: none">• With this feature, you can choose to hear sounds from the baby unit all the time, or to hear sounds that exceed a certain level. You can use the parent unit to adjust the microphone sensitivity of your baby unit. The higher the sensitivity level, the more sensitive the baby unit is in detecting sounds for transmitting to the parent unit. The sound sensitivity is preset to . - high sensitivity level. - medium high sensitivity level. - medium sensitivity level. - medium low sensitivity level. - low sensitivity level.
	Sound activation <ul style="list-style-type: none">• Automatically turns on the parent unit screen when a sound is detected in your baby’s room. When no sound is detected, the screen is off to save power. - turn on sound activation. - turn off sound activation.
	Pairing <ul style="list-style-type: none">• The baby units and parent unit provided are already paired.

Using the baby monitor

Power on or off the baby unit

- Press **⏻** to power on the baby unit. The **POWER** light turns on.
- Press and hold **⏻** again to power off the baby unit. The **POWER** light turns off.

Power on or off the parent unit

- Press **⏻** to power on the parent unit. The screen turns on.
- Press and hold **⏻** again to power off the parent unit. The screen turns off.

Turn on or off the parent unit screen

You can turn on or off the parent unit screen without powering off the parent unit. You can still hear sound from the baby unit.

- Press **⏻** on the parent unit at any time.

Adjust the speaker volume for baby unit

You can adjust the speaker volume.

- Press **▲/VOL** or **▼/VOL** on the baby unit at any time.

Adjust the speaker volume for parent unit

You can adjust the speaker volume from to or to , or turn it off. The preset speaker volume is .

- Press **VOL▲** or **VOL▼** on the parent unit while viewing image from baby unit.

When the speaker volume is set to off, the screen displays .

Adjust the LCD brightness of the parent unit

You can adjust the brightness of the parent unit screen. The LCD brightness is preset to .

1. Press **MENU/SELECT** when the parent unit is not in use.
2. Press **VOL▼** or **VOL▲** to scroll to .
3. Press **◀** or **▶** to adjust the brightness.
4. Press **MENU/SELECT** to confirm your selection.

Adjust the sound sensitivity of the baby unit

You can choose to hear sounds from the baby unit all the time, or to hear sounds that exceed a certain level. You can use the parent unit to adjust the microphone sensitivity of your baby unit. The higher the sensitivity level, the more sensitive the baby unit is in detecting sounds for transmitting to the parent unit. The sound sensitivity is preset to .

Sound sensitivity table for reference

Icon display	Sensitivity	Description
	High sensitivity	High sensitivity level The parent unit speaker is constantly on, and you will hear all sounds (including background noises) from your baby’s room.
		Medium high sensitivity level The parent unit speaker turns on for soft babbling and louder sounds from your baby. It remains quiet when your baby sleeps soundly.
		Medium sensitivity level The parent unit speaker turns on for loud babbling and louder sounds from your baby. It remains quiet when your baby makes soft sounds.
		Medium low sensitivity level The parent unit speaker turns on for crying and louder sounds from your baby. It remains quiet when your baby makes soft sounds.
	Low sensitivity	Low sensitivity level The parent unit speaker turns on for loud crying or screeching sounds from your baby. It remains quiet when your baby makes soft sounds.

1. Press **MENU/SELECT** when the parent unit is not in use.
2. Press **VOL▼** or **VOL▲** to scroll to .
3. Press **◀** or **▶** to adjust the sensitivity level.
4. Press **MENU/SELECT** to confirm your selection.

TIP

You can adjust the baby unit placement to improve the sound detection.

Turn on or off the sound activation

The parent unit continuously monitors the sound level in your baby’s room. When the sound activation mode is on, the parent unit screen turns on when the baby unit detects a sound. As long as no sound is detected within 50 seconds, the parent unit screen is off to save power. When your baby starts to cry, the sound activation triggers the parent unit screen to turn on automatically.

1. Press **MENU/SELECT** when the parent unit is not in use.
2. Press **VOL▼** or **VOL▲** to scroll to .
3. Press **◀** or **▶** to select to turn on, or to turn off sound activation.
4. Press **MENU/SELECT** to confirm your selection.

NOTES

- If you mute the speaker while sound activation is on, then you hear a beep sound whenever the screen turns on.
- If you want to turn on the parent unit screen continuously while the sound activation is on, then set the sound sensitivity to .

Select the camera

You can select the screen to view images from a particular baby unit, or view all baby units in Patrol Mode. If you select Patrol Mode to view the images, the screen switches to view another baby unit automatically after some time. The switching is in chronological order: 1 to 4.

1. Press **MENU/SELECT** when the parent unit is not in use.
2. Press **VOL▼** or **VOL▲** to scroll to .
3. Press **◀** or **▶** to select the desired baby unit (1, 2, 3 or 4) or Patrol Mode ().
4. Press **MENU/SELECT** to confirm your selection.

Zoom

You can zoom in or out while viewing image from baby unit.

- Press **Ⓢ** to zoom in.
- Press and hold **VOL▲**, **VOL▼**, **◀** or **▶** to move the zoomed image upward, downward, leftward or rightward correspondingly.
- Press **Ⓢ** again to zoom out.

Talk function

You can use the **TALK** function of the parent unit to talk and comfort your baby.

- Press and hold **TALK** when the parent unit is viewing particular baby unit. Speak towards the microphone on the parent unit. Your voice is broadcast to the baby unit.

Night vision

The baby unit has infrared LEDs that allow you to see your baby clearly at night or in a dark room. When the baby unit detects low light levels, the infrared LEDs are switched on automatically.

NOTE

When the infrared LEDs are on, the image is in black and white. This is normal due to external light sources.

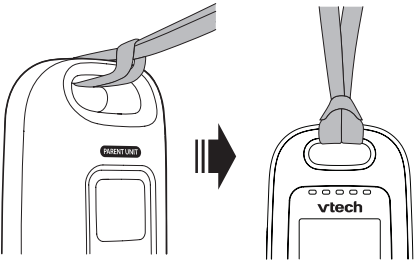
TIP

Depending on the surroundings and other interfering factors, like lightings, objects, colors and backgrounds, the display resolution may vary. Adjust the baby unit's angle or place the baby unit at a higher level to prevent glare and blurry display.

Portable use of parent unit (optional)

NOTE

Sling is not included. You may need to buy a sling for portable usage.



- Make sure battery is installed and charged. Unplug the power adaptor.
- Pinch the end of the sling and insert it into the slot on the top of the parent unit.
- Insert the one end of the sling into the other end of the sling, and fasten it.

General product care

To keep this product working well and looking good, follow these guidelines:

- Avoid putting it near heating appliances and devices that generate electrical noise (for example, motors or fluorescent lamps).
- DO NOT expose it to direct sunlight or moisture.
- Avoid dropping the product or treating it roughly.
- Clean with a soft cloth.
- DO NOT immerse the parent unit and the baby unit in water and do not clean them under the tap.
- DO NOT use cleaning spray or liquid cleaners.
- Make sure the baby unit and parent unit are dry before you connect them to the mains again.

Storage

When you are not going to use the baby monitor for some time, remove the rechargeable battery from the parent unit. Store the parent unit, the baby unit and the adapters in a cool and dry place.

Frequently asked questions

Below are the questions most frequently asked about the baby monitor. If you cannot find the answer to your question, contact customer service by visiting our website at www.vtechphones.com or calling **1 (800) 595-9511**.

Why does the baby monitor not respond normally?	Try the following (in the order listed) for common cure: 1. Disconnect the power to the baby units and the parent unit. 2. Remove the batteries in the parent unit. Then, install the batteries again. 3. Wait a few minutes before connecting power back to the baby units and the parent unit. 4. Turn on the baby units and the parent unit. 5. Wait for the parent unit to synchronize with the baby units. Allow up to one minute for this to take place.
Why don't the power-on light of the baby unit and parent unit go on when I switch on the units?	Perhaps the rechargeable battery of the parent unit is empty and the parent unit is not connected to the mains. Insert the appliance plug into the parent unit and put the adapter in a wall socket. Then, press ⏻ to switch on the parent unit and to establish connection with the baby unit. Perhaps the baby unit is not connected to the mains. Connect the baby unit to the mains. Then, set ON/OFF switch to ON to switch on the baby unit and to establish connection with the parent unit.
Why is my screen in black and white?	The screen is in black and white during nighttime or in a dark room. This is normal due to external light sources.
Why do I get glare or blurry display on my screen when viewing my baby at night?	During nighttime or in a dark room, the surroundings and other interfering factors, like lightings, objects, colors and backgrounds may affect the image quality on your parent unit screen. Adjust the baby unit's angle or place the baby unit at a higher level to prevent glare and blurry display.
Why does the baby monitor produce a high-pitched noise?	The units may be too close to each other. Make sure the parent unit and the baby unit at least 1 meter/3 feet away from each other.

The POWER light on the baby unit flashes and the parent unit displays ⚡ .	The baby unit is unpaired from the parent unit. Pair the baby unit: 1. Press MENU/SELECT when the parent unit is not in use. 2. Press VOL▼ or VOL▲ to choose ⚡ . 3. Press VOL▼ or VOL▲ to choose a desired baby unit slot, then press MENU/SELECT . The screen displays ⚡ . 4. Turn on the baby unit, and then immediately press and hold PAIR until the POWER light turns on. When pairing is successful, the screen displays ✓ , and then the image from the newly paired baby unit. • If pairing fails, the screen displays ! . Try the pairing process again. • Only one baby unit can be paired at a time.
Why does the parent unit react too quickly to other sounds?	The baby unit also detects other sounds than those of your baby. Adjust the sensitivity level to a lower level or adjust the speaker volume on the parent unit.
Why don't I hear a sound/ Why can't I hear my baby cry?	The volume of the parent unit may have set too low. Press VOL▲ to increase the volume level. You may have set a low sound sensitivity level. See Adjust the sound sensitivity of the baby unit to change the setting.
Why does the parent unit beep?	The baby units may be out of range. Move the parent unit closer to the baby units (but not less than 3 feet). If the parent unit is powered by the provided battery, it may not have enough charge for the parent unit to perform normally. Charge the battery in the parent unit for up to 12 hours.
Why can't I establish a connection? Why is the connection lost every now and then? Why are there sound interruptions?	The baby units may be out of range. Move the parent unit closer to the baby units (but not less than 3 feet). Other electronic products may cause interference with your baby monitor. Try installing your baby monitor as far away from these electronic devices as possible.

Important safety instructions

When using your equipment, basic safety precautions should always be followed to reduce the risk of fire, electric shock and injury, including the following:

- Follow all warnings and instructions marked on the product.
- Adult setup is required.
- This product is intended as an aid. It is not a substitute for responsible and proper adult supervision and should not be used as such.
- This product is not intended for use as a medical monitor.
- Do not use this product near water. For example, do not use it next to a bath tub, wash bowl, kitchen sink, laundry tub or swimming pool, or in a wet basement or shower.
- CAUTION:** Use only the batteries indicated in this manual. There may be a risk of explosion if a wrong type of battery is used for the parent unit. Use only the supplied rechargeable battery or replacement battery pack (BT188645/BT288645) for the parent unit. Do not dispose of batteries in a fire. They may explode. Dispose of used battery according to the information in **The RBRC® seal**.
- Use only the adapters included with this product. Incorrect adapter polarity or voltage can seriously damage the product. Baby unit power adapter: Input 100-240V AC 150mA 50/60Hz; Output: 6V DC 600mA Parent unit power adapter: Input 100-240V AC 150mA 50/60Hz; Output: 6V DC 600mA.
- The power adapters are intended to be correctly oriented in a vertical or floor mount position. The prongs are not designed to hold the plug in place if it is plugged into a ceiling, under-the-table or cabinet outlet.
- For pluggable equipment, the socket-outlet shall be installed near the equipment and shall be easily accessible.
- Unplug this product from the wall outlet before cleaning. Do not use liquid or aerosol cleaners. Use a damp cloth for cleaning.
- Unplug the power cords before replacing batteries.
- Do not cut off the power adapters to replace them with other plugs, as this causes a hazardous situation.

SAVE THESE INSTRUCTIONS

Stimulateurs cardiaques implantés dans l'organisme

Les simulateurs cardiaques (ne s'applique qu'aux dispositifs numériques sans fil):

L'organisme "Wireless Technology Research, LLC (WTR)", une firme de recherche indépendante, a mené une évaluation pluridisciplinaire des interférences entre les téléphones sans fil portatifs et les stimulateurs cardiaques implantés dans l'organisme. Appuyée par l'Administration des aliments et drogues (FDA) des États-Unis, la firme WTR recommande aux médecins:

Avis aux détenteurs de stimulateurs cardiaques

- Vous devriez maintenir les dispositifs sans fil à au moins six pouces du simulateur cardiaque.
- Ils ne doivent PAS placer le téléphone sans fil directement sur le stimulateur cardiaque, tel que dans une poche de chemise, lorsque celui-ci est en marche.

L'étude effectuée par l'organisme WRS n'a pas identifié de risque pour les détenteurs de stimulateurs cardiaques causés par les gens qui utilisent dispositifs sans fil à proximité de ceux-ci.

Champs électromagnétiques (EMF)

Ce produit de VTech est conforme à toutes les normes se rapportant aux champs électromagnétiques (EMF) standard. Si vous le manipulez correctement en suivant les instructions de ce guide, son utilisation sera sécuritaire pendant de nombreuses années, selon les meilleures évidences scientifiques dont nous disposons aujourd'hui.

Limited warranty

What does this limited warranty cover?

The manufacturer of this VTech Product warrants to the holder of a valid proof of purchase ("Consumer" or "you") that the Product and all accessories provided in the sales package ("Product") are free from defects in material and workmanship, pursuant to the following terms and conditions, when installed and used normally and in accordance with the Product operating instructions. This limited warranty extends only to the Consumer for Products purchased and used in the United States of America and Canada.

What will VTech do if the Product is not free from defects in materials and workmanship during the limited warranty period ("Materially Defective Product")?

During the limited warranty period, VTech's authorized service representative will repair or replace at VTech's option, without charge, a Materially Defective Product. If we repair the Product, we may use new

- Do not allow anything to rest on the power cords. Do not install this product where the cords may be walked on or crimped.
- This product should be operated only from the type of power source indicated on the marking label. If you are not sure of the type of power supply in your home, consult your dealer or local power company.
- Do not overload wall outlets or use an extension cord.
- Do not place this product on an unstable table, shelf, stand or other unstable surfaces.
- This product should not be placed in any area where proper ventilation is not provided. Slots and openings in the back or bottom of this product are provided for ventilation. To protect them from overheating, these openings must not be blocked by placing the product on a soft surface such as a bed, sofa or rug. This product should never be placed near or over a radiator or heat register.
- Never push objects of any kind into this product through the slots because they may touch dangerous voltage points or create a short circuit. Never spill liquid of any kind on the product.
- To reduce the risk of electric shock, do not disassemble this product, but take it to an authorized service facility. Opening or removing parts of the product other than specified access doors may expose you to dangerous voltages or other risks. Incorrect reassembling can cause electric shock when the product is subsequently used.
- You should test the sound reception every time you turn on the units or move one of the components.
- Periodically examine all components for damage.
- Be aware of possible loss of privacy while using public airwaves. Conversations may be picked up by other nursery monitors, cordless phones, scanners, etc.
- Children should be supervised to ensure that they do not play with the product.
- The product is not intended for use by persons (including children) with reduced physical, sensory or mental capabilities, or lack of experience and knowledge, unless they have been given supervision or instruction concerning use of the appliance by a person responsible for their safety.

Cautions

- Use and store the product at a temperature between 32°F and 104°F.
- Do not expose the product to extreme cold, heat or direct sunlight. Do not put the product close to a heating source.
- Batteries should not be exposed to excessive heat such as bright sunshine or fire.
- Make sure the baby unit(s) and the adapter cord(s) are always out of reach of the baby, at least 3 feet away from the baby or crib, to avoid a possible strangulation hazard.
- Never place the baby unit(s) inside the baby's crib or playpen. Never cover the baby unit(s) or parent unit with anything such as a towel or a blanket.
- Other electronic products may cause interference with your baby monitor. Try installing your baby monitor as far away from these electronic devices as possible: wireless routers, radios, cellular telephones, intercoms, room monitors, televisions, personal computers, kitchen appliances and cordless telephones.

Precautions for users of implanted cardiac pacemakers

Cardiac pacemakers (applies only to digital cordless devices):

Wireless Technology Research, LLC (WTR), an independent research entity, led a multidisciplinary evaluation of the interference between portable wireless devices and implanted cardiac pacemakers. Supported by the U.S. Food and Drug Administration, WTR recommends to physicians that:

Pacemaker patients

- Should keep wireless devices at least six inches from the pacemaker.
- Should NOT place wireless devices directly over the pacemaker, such as in a breast pocket, when it is turned ON.

WTR's evaluation did not identify any risk to bystanders with pacemakers from other persons using wireless devices.

Electromagnetic fields (EMF)

This VTech product complies with all standards regarding electromagnetic fields (EMF). If handled properly and according to the instructions in this user's manual, the product is safe to be used based on scientific evidence available today.

NOTE: Before calling for service, please review the user's manual - a check of the Product's controls and features may save you a service call.

Except as provided by applicable law, you assume the risk of loss or damage during transit and transportation and are responsible for delivery or handling charges incurred in the transport of the Product(s) to the service location. VTech will return repaired or replaced Product under this limited warranty. Transportation, delivery or handling charges are prepaid. VTech assumes no risk for damage or loss of the Product in transit. If the Product failure is not covered by this limited warranty, or proof of purchase does not meet the terms of this limited warranty, VTech will notify you and will request that you authorize the cost of repair prior to any further repair activity. You must pay for the cost of repair and return shipping costs for the repair of Products that are not covered by this limited warranty.

What must you return with the Product to get warranty service?

- Return the entire original package and contents including the Product to the VTech service location along with a description of the malfunction or difficulty; and
- Include a "valid proof of purchase" (sales receipt) identifying the Product purchased (Product model) and the date of purchase or receipt; and
- Provide your name, complete and correct mailing address, and telephone number.

Other limitations

This warranty is the complete and exclusive agreement between you and VTech. It supersedes all other written or oral communications related to this Product. VTech provides no other warranties for this Product. The warranty exclusively describes all of VTech's responsibilities regarding the Product. There are no other express warranties. No one is authorized to make modifications to this limited warranty and you should not rely on any such modification.

State/Provincial Law Rights: This warranty gives you specific legal rights, and you may also have other rights, which vary from state to state or province to province.

Limitations: Implied warranties, including those of fitness for a particular purpose and merchantability (an unwritten warranty that the Product is fit for ordinary use) are limited to one year from the date of purchase. Some states/provinces do not allow limitations on how long an implied warranty lasts, so the above limitation may not apply to you. In no event shall VTech be liable for any indirect, special, incidental, consequential, or similar damages (including, but not limited to lost profits or revenue, inability to use the Product or other associated equipment, the cost

The RBRC® seal

The RBRC® seal on the nickel-metal battery indicates that VTech Communications, Inc. is voluntarily participating in an industry program to collect and recycle these batteries at the end of their useful lives, when taken out of service within the United States and Canada.

The RBRC® program provides a convenient alternative to placing used nickel-metal batteries into the trash or municipal waste, which may be illegal in your area.

VTech's participation in RBRC® makes it easy for you to drop off the spent battery at local retailers participating in the RBRC® program or at authorized VTech product service centers. Please call

1 (800) 8 BATTERY® for information on Ni-MH battery recycling and disposal bans/restrictions in your area. VTech's involvement in this program is part of its commitment to protecting our environment and conserving natural resources.

RBRC® and 1 (800) 8 BATTERY® are registered trademarks of Rechargeable Battery Recycling Corporation.



FCC regulations

FCC Part 15

This equipment has been tested and found to comply with the requirements for a Class B digital device under Part 15 of the Federal Communications Commission (FCC) rules. These requirements are intended to provide reasonable protection against harmful interference in a residential installation. This equipment generates, uses and can radiate radio frequency energy and, if not installed and used in accordance with the instructions, may cause harmful interference to radio communications. However, there is no guarantee that interference will not occur in a particular installation. If this equipment does cause harmful interference to radio or television reception, which can be determined by turning the equipment off and on, the user is encouraged to try to correct the interference by one or more of the following measures:

- Reorient or relocate the receiving antenna.
- Increase the separation between the equipment and receiver.
- Connect the equipment into an outlet on a circuit different from that to which the receiver is connected.

of substitute equipment, and claims by third parties) resulting from the use of this Product. Some states/provinces do not allow the exclusion or limitation of incidental or consequential damages, so the above limitation or exclusion may not apply to you.

Please retain your original sales receipt as proof of purchase.

Technical specifications

Frequency control	Crystal controlled PLL synthesizer
Transmit frequency	Baby unit: 2407.5 - 2475 MHz Parent unit: 2407.5 - 2475 MHz
Channels	21
LCD	2" Color LCD (TFT 176x220 pixel)
Nominal effective range	Maximum power allowed by FCC. Actual operating range may vary according to environmental conditions at the time of use.
Power requirement	Parent unit: 3.6 V Ni-MH battery Baby unit power adapter: Input: 100-240V AC 150mA 50/60Hz Output: 6V DC 600mA Parent unit power adapter: Input: 100-240V AC 150mA 50/60Hz Output: 6V DC 600mA

- Consult the dealer or an experienced radio/TV technician for help.

Changes or modifications to this equipment not expressly approved by the party responsible for compliance could void the user's authority to operate the equipment.

This device complies with Part 15 of the FCC rules. Operation is subject to the following two conditions: (1) this device may not cause harmful interference, and (2) this device must accept any interference received, including interference that may cause undesired operation.

To ensure safety of users, the FCC has established criteria for the amount of radio frequency energy that can be safely absorbed by a user or bystander according to the intended usage of the product. This product has been tested and found to comply with the FCC criteria. The baby unit shall be installed and used such that parts of all persons' body are maintained at a distance of approximately 8 inch (20 cm) or more. The transmitter and antenna of the parent unit shall be held at least 1 inch (2.5 cm) from your face.

This Class B digital apparatus complies with Canadian requirement:
CAN ICES-3 (B)/NMB-3(B)

RF radiation exposure statement

The baby unit complies with FCC RF radiation exposure limits set forth for an uncontrolled environment. The baby unit should be installed and operated with a minimum distance of 8 inch (20 cm) between the baby unit and all persons' body. Use of other accessories may not ensure compliance with FCC RF exposure guidelines. This transmitter must not be co-located or operating in conjunction with any other antenna or transmitter.

California Energy Commission battery charging testing mode

This baby monitor meets the California Energy Commission (CEC) regulations for energy consumption. Your baby monitor is set up to comply with the energy-conserving standards right out of the box.

Follow the instructions to install and charge the battery. The CEC battery charging testing mode is activated while charging.

Even if the parent unit is paired to baby units, the CEC battery charging testing mode is activated while it is powered off and charging.

For cETL compliance only

Mesures de sécurité importantes

Lorsque vous utilisez votre appareil, vous devriez toujours suivre certaines mesures de précaution de base afin de réduire les risques d'incendie, d'électrocution et de blessures corporelles, dont ceux qui suivent:

- Observez toutes les instructions et mises en garde inscrites sur l'appareil.
- L'installation par un adulte est requise.
- Ce produit a été conçu pour être un dispositif d'appoint seulement. Il n'est pas le remplacement d'une supervision responsable et adéquate par un adulte et ne devrait pas être utilisé comme telle.
- Ce produit n'est pas conçu pour être utilisé en tant que moniteur médical.
- N'utilisez pas cet appareil près de l'eau ni de toute autre source d'humidité, par exemple, près d'une baignoire, cuve à lessive, évier de cuisine, dans un sous-sol humide ni près d'une piscine, dans un soussol humide ou une douche.
- MISE EN GARDE:** Il peut y avoir un risque d'explosion si vous utilisez le mauvais type de piles pour l'unité du parent. N'utilisez que le bloc-piles rechargeable inclus ou le bloc-piles de rechange (BT188645/BT288645). N'incinerez pas les piles. Celles-ci risqueraient d'exploser. Jetez les piles usées selon les renseignements suivant le **sceau du RBRC®**.
- N'utilisez que les adaptateurs inclus avec ce produit. L'utilisation d'un adaptateur dont la polarité ou la tension serait inadéquate risque d'endommager sérieusement le produit et mettre votre sécurité en péril.

Adaptateur de l'unité du bébé: Entrée 100-240V CA 150 mA 50/60 Hz; Sortie : 6 V CC 600 mA. Adaptateur de l'unité du parent: Entrée 100-240V CA 150 mA 50/60 Hz; Sortie : 6 V CC 600 mA.

- Lorsqu'ils sont branchés dans une prise de courant, les adaptateurs secteur ont été conçus pour être orientés correctement, soit à la verticale ou au plancher. Les broches n'ont pas été conçues pour supporter le poids du bloc d'alimentation et le maintenir en place si celui-ci est branché dans une prise au plafond, sous une table ou dans un meuble.
- Pour les PRODUITS À BRANCHER À UNE PRISE DE COURANT, la prise de courant doit être installée près du produit, afin d'assurer une accessibilité sécuritaire à la prise de courant.
- Débranchez ce produit de la prise de courant avant de procéder au nettoyage. N'utilisez pas de nettoyeurs en aérosols. Utilisez un chiffon humide pour le nettoyer.
- Débranchez les cordons d'alimentation avant de remplacer le bloc-piles.
- Ne coupez pas les cordons d'alimentation pour remplacer les fiches, car ceci peut présenter un danger potentiel.
- Ne laissez aucun objet reposer ni appuyer sur le cordon d'alimentation. N'installez pas cet appareil dans un endroit où l'on risque d'écraser le cordon d'alimentation ou de le piétiner.
- Ne faites fonctionner cet appareil qu'avec le type d'alimentation indiqué sur l'étiquette. Si vous ne connaissez pas le type d'alimentation que vous possédez à votre domicile, consultez votre marchand ou votre compagnie locale d'électricité.
- Ne surchargez pas les prises de courant murales ni les rallonges électriques.
- Ne placez pas cet appareil sur un chariot, meuble, trépied, support de montage ni table chancelants.
- Les trous et ouvertures du boîtier, situés à l'arrière de l'appareil ou sous celui-ci, servent à aérer l'appareil. Pour l'empêcher de surchauffer, ne bloquez sous aucun prétexte ces ouvertures et n'empêchez pas la aération adéquate de l'appareil en le plaçant sur un lit, divan, tapis ou toute autre surface similaire. De même, ne le positionnez pas à proximité ni au-dessus d'une source de chaleur ou d'un calorifère. De plus, ne placez pas l'appareil dans un endroit avant de vous assurer qu'il y ait une bonne circulation d'air.
- N'enfoncez jamais d'objets à travers les ouvertures de cet appareil, car ils pourraient entrer en contact avec des points de tension dangereux ou causer des courts-circuits qui peuvent dégénérer en incendies ou en risques d'électrocution. Ne renversez jamais de liquide dans ce produit.

- Afin de réduire les risques d'électrocution, ne démontez pas cet appareil, mais apportez-le dans un centre de service autorisé. L'ouverture du boîtier ou le retrait de toutes pièces que contient cet appareil, à l'exception de l'accès autorisé à certaines portes ou ouvertures, risque de vous exposer à des points de tension dangereux ou d'autres dangers. Un remontage incorrect peut par la suite présenter des risques d'électrocution.
- Vous devriez tester la réception chaque fois que vous mettez l'appareil en fonction.
- Examinez les composantes afin de vérifier si celles-ci ne sont pas endommagées.
- Soyez avisé de la perte de la confidentialité lorsque vous utilisez les ondes publiques. Les conversations peuvent être entendues par d'autres moniteurs de bébé, des téléphones sans fil, des scanners, etc.
- Les enfants devraient être supervisés afin de vous assurer qu'ils ne jouent pas avec l'appareil.
- Le produit n'est pas conçu pour être utilisé par des personnes (incluant des enfants) aux capacités physiques, sensorielles ou mentales réduites ou qui manquent d'expérience et de connaissances, à moins qu'on leur ait donné suffisamment de supervision ou d'instructions relativement à l'utilisation de l'appareil par une personne responsable de leur sécurité.

CONSERVEZ CES INSTRUCTIONS

Mises en garde

- Utilisez et entreposez le produit à une température entre 0° C (32°F) et 40° C (104° F).
- N'exposez pas cet appareil à des froids ou des chaleurs extrêmes, ainsi qu'à la lumière directe du soleil. Ne l'installez pas près d'une source de chauffage.
- Le bloc-piles ne doit pas être exposé à la chaleur excessive telle que la lumière du soleil ou au feu.
- Assurez-vous que le moniteur et le cordon de l'adaptateur sont toujours hors de portée des enfants, à au moins 1 mètre (3 pieds) de l'enfant ou du berceau, pour éviter tout risque de strangulation.
- Ne jamais placer le moniteur à l'intérieur du berceau ou du parc de bébé. Ne jamais couvrir le moniteur ou l'unité (s) portative avec un article tel une serviette ou une couverture.
- D'autres équipements électroniques peuvent produire des interférences sur votre moniteur vidéo et audio. Tentez d'installer votre moniteur vidéo ou audio à l'écart des appareils électroniques tels que des routeurs sans fil, radios, téléphones cellulaires, interphones, moniteurs, téléphones, ordinateurs personnels, électroménagers et téléphones sans fil.



Specifications are subject to change without notice.
© 2017 VTech Communications, Inc.
All rights reserved. 05/17. BV7312X_CIB_V2.0
Document order number: 91-010704-010-100