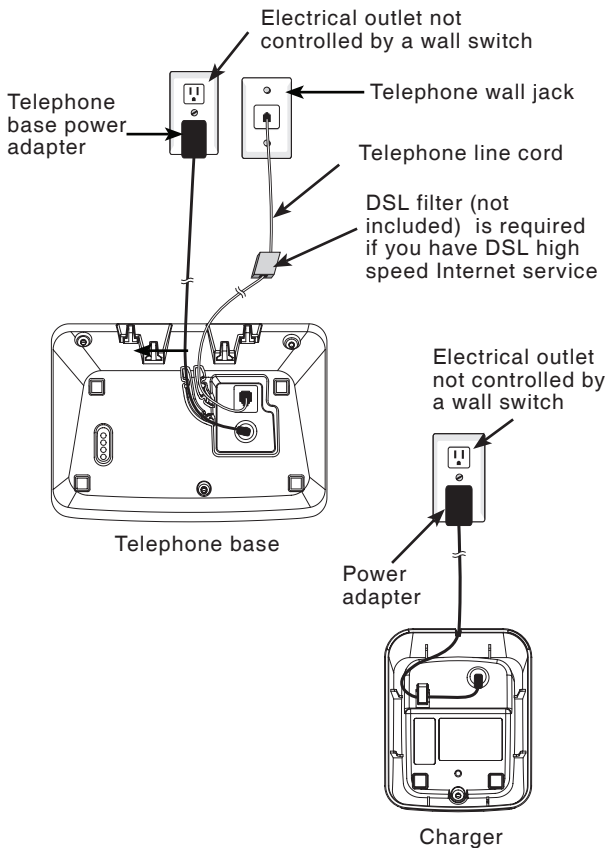


Quick start guide

for models DS6321-2/DS6321-3/
DS6321-4/DS6322-3/DS6322-4

Install the telephone base

Install the telephone base and charger(s) as shown below.



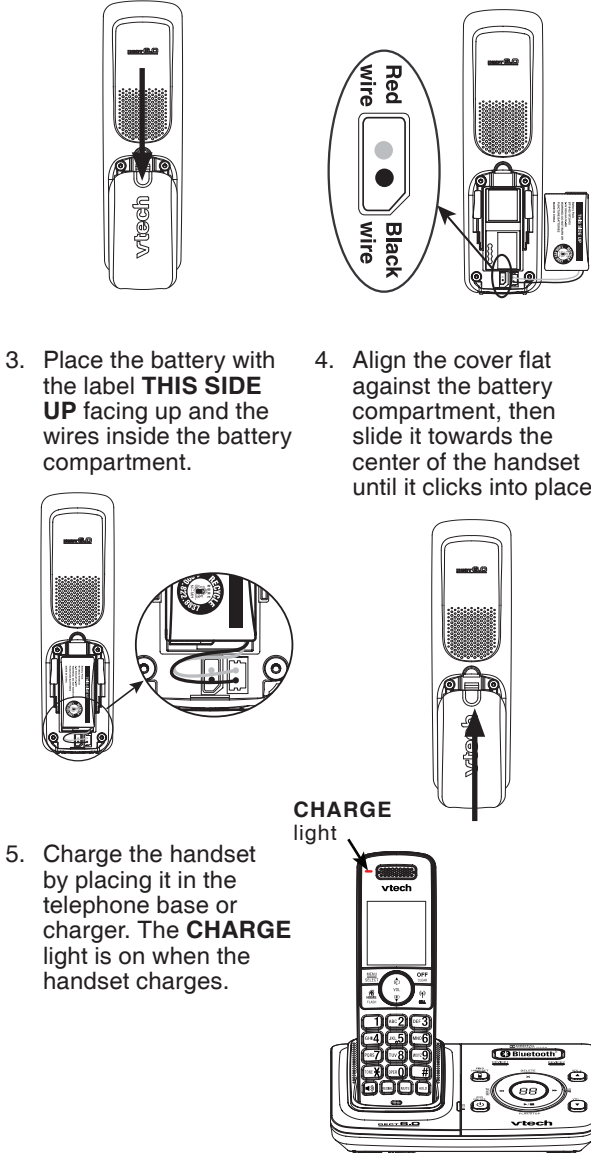
- note

- Use only the power adapters and batteries supplied with your VTech telephone.
 - For complete feature instructions, please refer to your user's manual.

Battery installation and charging

Install the battery as shown below. For optimal performance, charge the handset battery for at least 16 hours before use.

- If the battery compartment cover is on the handset, press the indentation and slide the cover to remove.
- Plug the battery connector securely into the socket inside the handset battery compartment, matching the color-coded label.



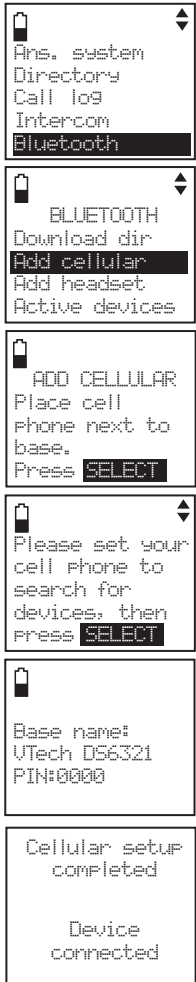
Pair your first Bluetooth cell phone

To pair and connect your first Bluetooth cell phone:

- Press **MENU/SELECT** on the handset.
- Press ▼ or ▲ to highlight **Bluetooth**, then press **MENU/SELECT**.
- Press ▼ or ▲ to highlight **Add cellular**, then press **MENU/SELECT**. The screen displays **ADD CELLULAR Place cell phone next to base. Press SELECT**.
- Press **MENU/SELECT**. The screen displays **Please set your cell phone to search for devices, then press SELECT**.
- Turn on the Bluetooth feature of your cell phone and search for or add new devices.
- Press **MENU/SELECT** to set the telephone base to discoverable mode.
- Once your cell phone finds your **VTech DS6321/VTech DS6322**, press a key on your cell phone to confirm the connection.
- Enter the PIN of the telephone base (the default PIN is **0000**) into your cell phone.
- When successfully connected, the handset displays **Cellular setup completed Device connected** and the corresponding status icon (📶 1 or 📶 2). The corresponding device light on the telephone base (**DEVICE1** or **DEVICE2**) turns on.

- note

- The pairing process may take up to one minute. If the pairing process fails, try again.
 - If you put the handset back in the telephone base or charger while pairing, the process stops and the handset returns to idle mode.



Pair your first Bluetooth headset

To pair and connect your first Bluetooth headset:

A paired Bluetooth headset can be used for making and receiving home calls.

- Press **MENU/SELECT** on the handset.
- Press ▼ or ▲ to highlight **Bluetooth**, then press **MENU/SELECT**.
- Press ▼ or ▲ to highlight **Add headset**, then press **MENU/SELECT**. The screen displays **ADD HEADSET Place Bluetooth headset next to base. Press SELECT**.
- Press **MENU/SELECT**. The screen displays **Please set your headset to discoverable mode, then press SELECT**.
- Set your headset to discoverable mode.
- Press **MENU/SELECT** to set your telephone base to discoverable mode and search for your headset.
- Once the telephone base finds your headset, press **MENU/SELECT**.
- Enter the PIN of your headset (the PIN for most Bluetooth devices is **0000**), then press **MENU/SELECT**.
- When the handset displays **Headset A paired to base. Connect now? Press SELECT**, then press **MENU/SELECT**.
- When successfully connected, the handset displays **Headset setup completed Device connected** and the corresponding status icon (📶 1 or 📶 2). The corresponding light on the telephone base (**DEVICE1** or **DEVICE2**) turns on.

- note

- The pairing process may take up to one minute. If the pairing process fails, try again.
 - If you put the handset back in the telephone base or charger while pairing, the process stops and the handset returns to idle mode.



Introducing Bluetooth

You can make and receive calls using the home and cell lines. The home line is your conventional telephone land line (**Ⓐ/HOME/FLASH**). The cell line is the telephone line associated with your cell phone service (**☎/CELL**).

You can:

- Pair up to four Bluetooth enabled cell phones with the telephone base. Up to two of them can make and receive cell calls. However, only one cell phone can be on a call at a time.
- Use the home and cell lines at the same time.
- Conference the home and cell lines.

Important Bluetooth information

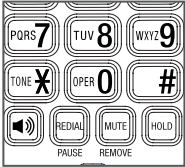
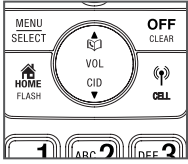
- Minutes are deducted from your cellular plan for the duration of all cell calls using the **DS6321/6322**.
- Charge your cell phone while it is connected to the telephone base. Your cell phone's battery discharges faster while it is connected to the telephone base via Bluetooth wireless technology.
- If you have voicemail service on your cell phone, unanswered calls to your cell line are answered by your cell phone's voicemail.
- Bluetooth wireless technology operates within a short range (about 1 to 30 feet) from the telephone base. Keep connected cell phones and headset within this range.
- If you are on a call using a cordless system handset on the cell line, you cannot pick up the paired cell phone and join the call. However, you can join the call using another **DS6321/6322** handset.
- You cannot use the cell line and a Bluetooth headset at the same time.
- If your cell phone has poor reception in your home, the **DS6321/6322** cannot improve the reception. However, if you have a location in your house with better reception, you can leave your cell phone in that location while you use the **DS6321/6322** cell line. In order for this to work, the telephone base must be within 30 feet of the cell phone.

If you have difficulty using your cell line, refer to the **Troubleshooting section of the user's manual**.

Make, answer and end a call

To make a home call:

- Press **Ⓐ/HOME/FLASH** or **☎**), then enter the telephone number.



To predial a home call:

- Enter the telephone number, then press **Ⓐ/HOME/FLASH** or **☎**).

To answer a home call:

- Press **Ⓐ/HOME/FLASH** or **☎**).

-OR-

Press the call key on your headset if you have a Bluetooth headset connected.

To end a home call:

- Press **OFF/CLEAR** or put the handset in the telephone base or charger.

-OR-

Press the call key on your headset if you are using your headset.

To answer a home call using a Bluetooth headset:

- Press the call key on your headset.

To end a home call you answered from a Bluetooth headset:

- Press the call key on your headset.

If you make or answer a home call on a handset, you can transfer the call to the headset. The handset remains active with the handset earpiece and microphone muted. If you hang up the handset, the call will end.

To transfer a call from a handset to a Bluetooth headset:

- Press **MENU/SELECT** twice to select **Use headset**.

To transfer a call from the headset back to the handset:

- Press **MENU/SELECT** twice to select **Use handset**.

To end a call that started at the handset:

- Press **OFF/CLEAR** or put the handset in the telephone base or charger.

To make a cell call:

- Enter the telephone number, then press **☎/CELL**.

To answer a cell call:

- Press **☎/CELL**.

To end a cell call:

- Press **OFF/CLEAR** or put the handset in the telephone base or charger.

Download directory

You can download up to four cell phone directories to your **DS6321/6322** via Bluetooth wireless technology.

To download a cell phone directory:

1. Press **MENU/SELECT** on the handset.
2. Press **▼** or **▲** to highlight **Bluetooth**, then press **MENU/SELECT**.
3. Press **MENU/SELECT** to choose **Download dir**.
4. Press **▼** or **▲** to select a desired device, then press **MENU/SELECT**.
5. Press **▼** or **▲** to highlight one of the following options:
 - **Phone memory** - download all contacts stored in your phone memory.
 - **SIM card only** - download all contacts stored in your SIM card.
 - **Phone and SIM** - download all contacts stored in both your phone memory and SIM card.Press **MENU/SELECT**. During the download process, the handset will display the progress. All system handsets will display **Cell line in use**.
6. When the downloading process is complete, the handset displays **Download ended Total #XXXX entries saved. Press SELECT**. Press **MENU/SELECT** or **OFF/CLEAR** to return to the download directory menu.

note

- Place your cell phone next to the telephone base when you download a cell phone directory to your **DS6321/6322**.
- Make sure the cell phone is paired to your **DS6321/6322** and on the active devices list before you download a cell phone directory.

Message playback

To play messages with the telephone base:

1. Press **▶/■/PLAY/STOP** to listen to messages.

Options during playback:

- Press **▲/VOL+** or **▼/VOL-** to adjust the speaker volume.
- Press **▶/SKIP** to skip to the next message.
- Press **◀/REPEAT** to repeat the message currently playing. Press **◀/REPEAT** twice to listen to the previous message.
- Press **X/DELETE** to delete the current message. The system advances to the next message.
- Press **▶/■/PLAY/STOP** to stop.

To play messages with a handset:

1. Press **MENU/SELECT** on the handset.
2. Press **MENU/SELECT** to choose **Ans. system**.
3. Press **MENU/SELECT** to choose **Play messages**.

Options during playback:

- Press **▲/VOL+** or **▼/VOL-** to adjust the speaker volume.
- Press **6** to skip to the next message.
- Press **4** to repeat the message currently playing. Press **4** twice to listen to the previous message.
- Press **3** to delete the current message. The system advances to the next message.
- Press **5** to stop.

IMPORTANT!

If the **DS6321/6322** system is not working properly:

- Refer to the **Troubleshooting** section of the user's manual.
- Visit our website at www.vtechphones.com or call 1 (800) 595-9511. In Canada, go to www.vtechcanada.com or dial 1 (800) 267-7377.

The *Bluetooth*® word mark and logos are owned by Bluetooth SIG, Inc. and any use of such marks by VTech Holdings Limited is under license. VTech Holdings Limited is a member of Bluetooth SIG, Inc. Other trademarks and trade names are those of their respective owners.

Copyright © 2010 for VTECH TELECOMMUNICATIONS LTD.